

LOT 204 - GROUND LEASE MEXICO, MO



FOR MORE INFORMATION PLEASE CONTACT

Jack L. Maher, III

Broker-Officer

Mobile (573) 489-6860

Work (573) 228-6321

FAX (815) 550-1506

Buttonwood Business Center

3610 Buttonwood Dr., Suite 200

Columbia, MO 65201

Email at maher3@jlmproperties.com



MAHER

COMMERCIAL REAL ESTATE

The information contained herein is for illustration only - dimensions are approximate only.
This information is not to be reproduced or used for construction or permitting. The information contained within this brochure is believed to be accurate as of the date of input, however, JLM Properties, Inc., assumes no responsibility for the accuracy of the information provided.

WWW.MAHERCRE.COM

LOT 204 - GROUND LEASE MEXICO, MO

Call For Pricing.

Property Overview:

- .82 acre lot - build ready site
- All utilities to site
- Commercial Zoning in place
- Flexible lease structure
- Established West Plaza Shopping Center with multiple national tenants generating traffic.
- Ample parking for future business.
- Adjacent businesses include Car Quest, Hardees, Ace Hardware, Dollar General, and Walgreens.

FOR MORE INFORMATION PLEASE CONTACT

Jack L. Maher, III

Broker-Officer

Mobile (573) 489-6860

Work (573) 228-6321

FAX (815) 550-1506

Buttonwood Business Center

3610 Buttonwood Dr., Suite 200

Columbia, MO 65201

Email at maher3@jlmproperties.com



MAHER

COMMERCIAL REAL ESTATE

The information contained herein is for illustration only - dimensions are approximate only.
This information is not to be reproduced or used for construction or permitting. The information contained within this brochure is believed to be accurate as of the date of input, however, JLM Properties, Inc., assumes no responsibility for the accuracy of the information provided.

WWW.MAHERCRE.COM

LOT 204 - GROUND LEASE MEXICO, MO



FOR MORE INFORMATION PLEASE CONTACT

Jack L. Maher, III

Broker-Officer

Mobile (573) 489-6860

Work (573) 228-6321

FAX (815) 550-1506

Buttonwood Business Center

3610 Buttonwood Dr., Suite 200

Columbia, MO 65201



MAHER

COMMERCIAL REAL ESTATE

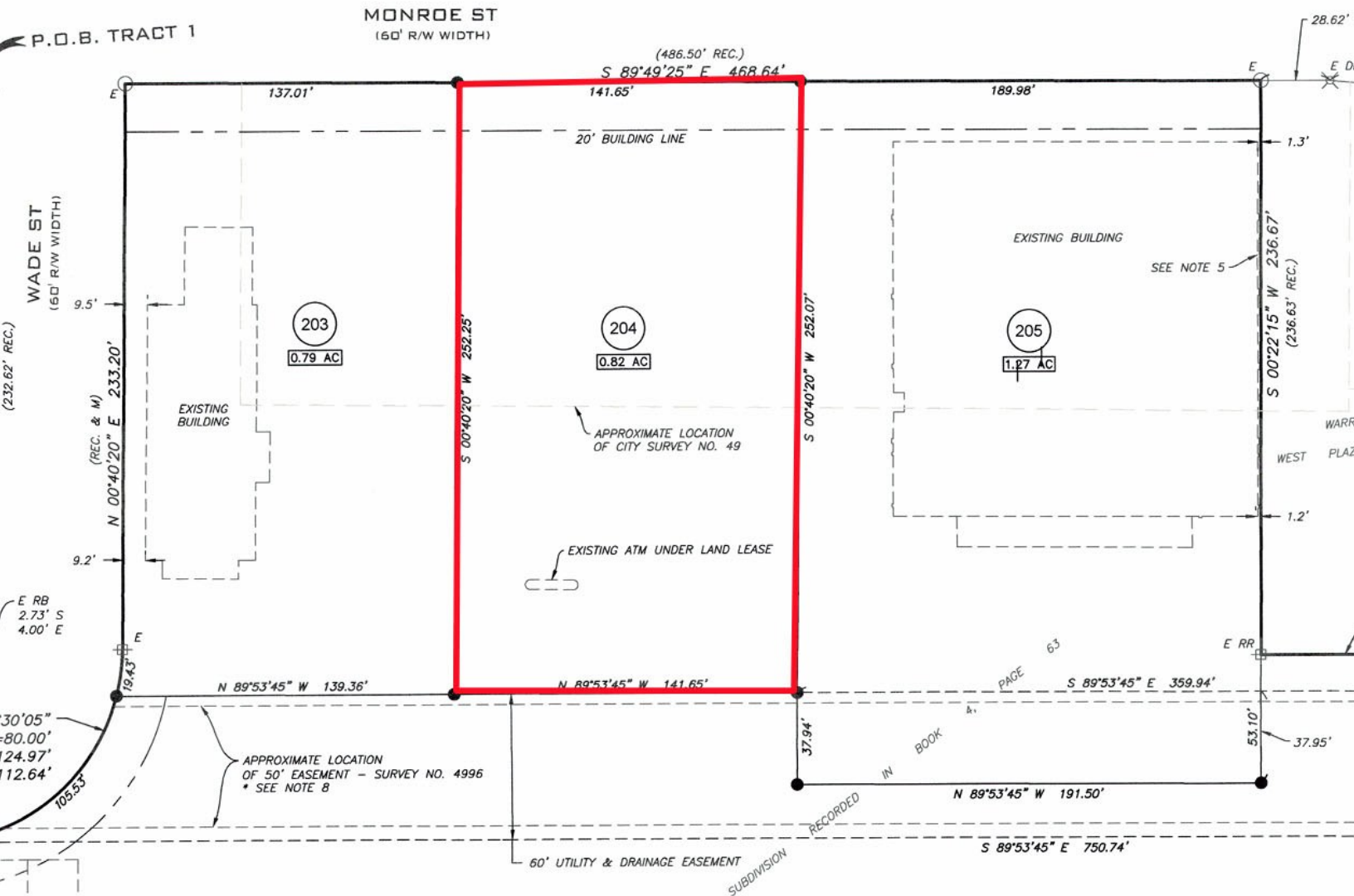
Email at maher3@jlmproperties.com

The information contained herein is for illustration only - dimensions are approximate only.
 This information is not to be reproduced or used for construction or permitting. The information contained within this brochure is believed to be accurate as of the date of input, however, JLM Properties, Inc., assumes no responsibility for the accuracy of the information provided.

WWW.MAHERCRE.COM

LOT 204 - GROUND LEASE MEXICO, MO

A REPLAT IN THE CITY OF MEXICO
NW1/4 OF SECTION 26, TOWNSHIP 51 NORTH, RANGE 9 WEST
AUDRAIN COUNTY, MISSOURI



FOR MORE INFORMATION PLEASE CONTACT

Jack L. Maher, III

Broker-Officer

Mobile (573) 489-6860

Work (573) 228-6321

FAX (815) 550-1506

Buttonwood Business Center

3610 Buttonwood Dr., Suite 200

Columbia, MO 65201

Email at maher3@jlmproperties.com



MAHER

COMMERCIAL REAL ESTATE

The information contained herein is for illustration only - dimensions are approximate only.
This information is not to be reproduced or used for construction or permitting. The information contained within this brochure is believed to be accurate as of the date of input, however, JLM Properties, Inc., assumes no responsibility for the accuracy of the information provided.

WWW.MAHERCRE.COM

LOT 204 - GROUND LEASE MEXICO, MO



FOR MORE INFORMATION PLEASE CONTACT

Jack L. Maher, III

Broker-Officer

Mobile (573) 489-6860

Work (573) 228-6321

FAX (815) 550-1506

Buttonwood Business Center

3610 Buttonwood Dr., Suite 200

Columbia, MO 65201

Email at maher3@jlmproperties.com



MAHER

COMMERCIAL REAL ESTATE

The information contained herein is for illustration only - dimensions are approximate only.
This information is not to be reproduced or used for construction or permitting. The information contained within this brochure is believed to be accurate as of the date of input, however, JLM Properties, Inc., assumes no responsibility for the accuracy of the information provided.

WWW.MAHERCRE.COM