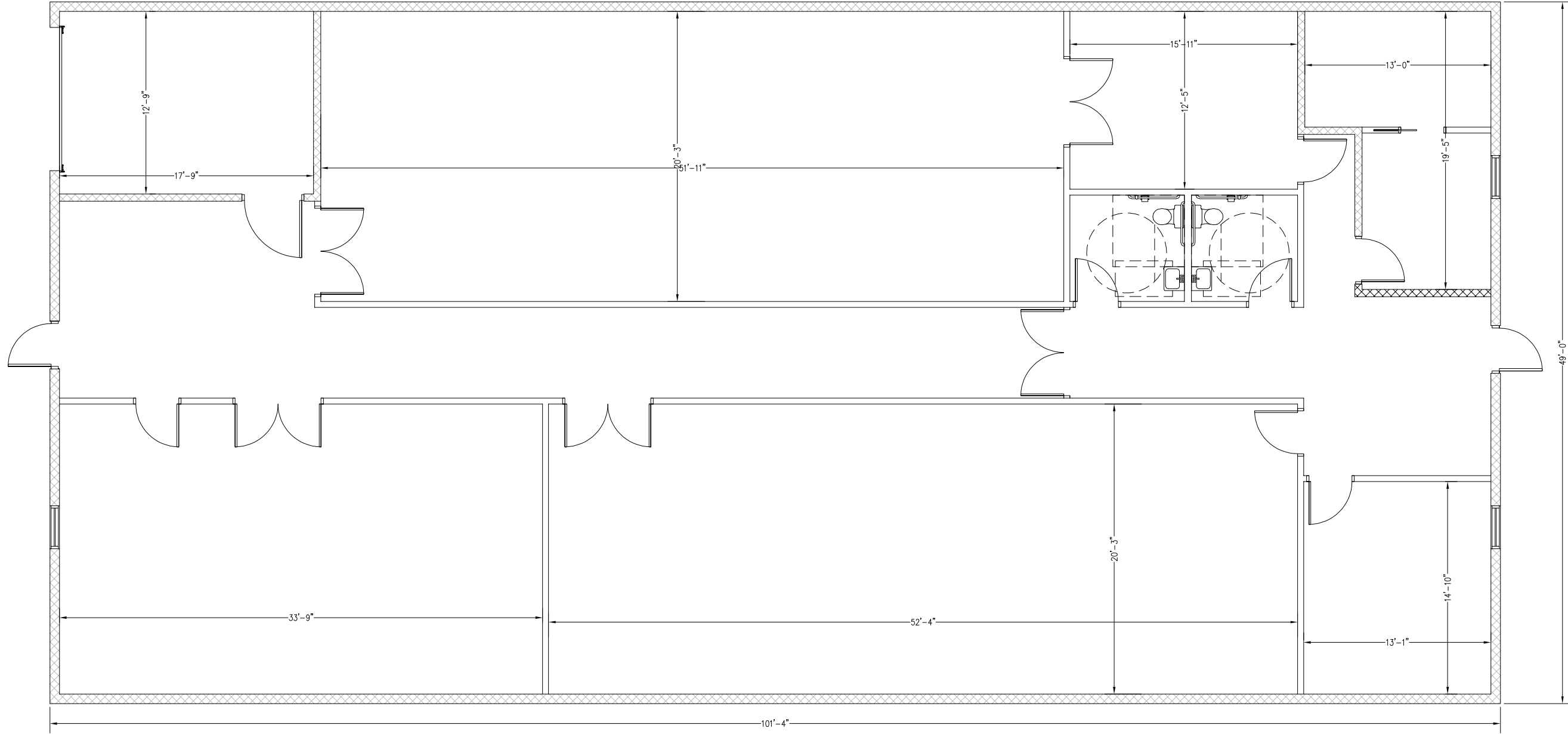


1/8"=1'-0"



**C. PELL, ARCHITECT, LLC**  
cpell\_arch@yahoo.com  
6354 S. BLACKHAWK WAY, 303-718-1343

**J & B BUILDING COMPANY**  
658 KALAMATH STREET

DATE: 17AUG25  
PROJECT:  
2025-JANDB-KALAMATH