



**CURRENT  
FACADE**

**BUILDING 15 | 3490 U.S. 1 | PRINCETON NJ**

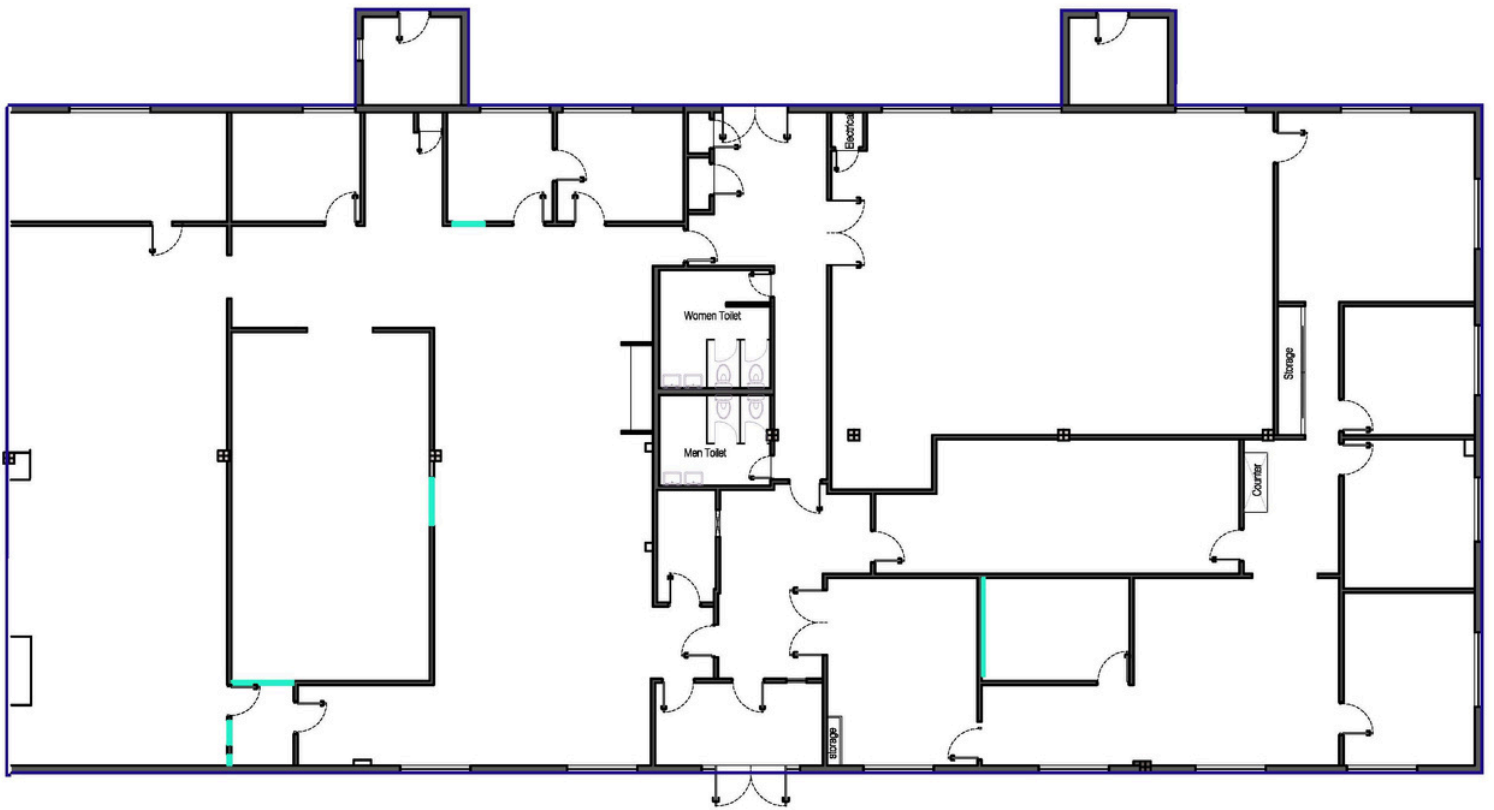
- Up to 8,800 SF
- 100+ FT FRONTAGE ON US 1
- PARKING IN FRONT & BACK
- ADA ACCESSIBLE PROPERTY
- IDEAL FOR MEDICAL / OFFICE
- 200+ PARKING SLOTS
- PREMIUM LOCATION –
  - U.S. 1 NORTH
  - NEXT TO 300+ UNITS MULTI-FAM DEVELOPMENT (\$800K+ HOMES)
  - WEST WINDSOR TWP
  - SURROUNDED WITH RESIDENTIAL WITHIN 3 MILE RADIUS
- 10 FT + CEILING HEIGHT
- DEDICATED PARKING FOR VANS



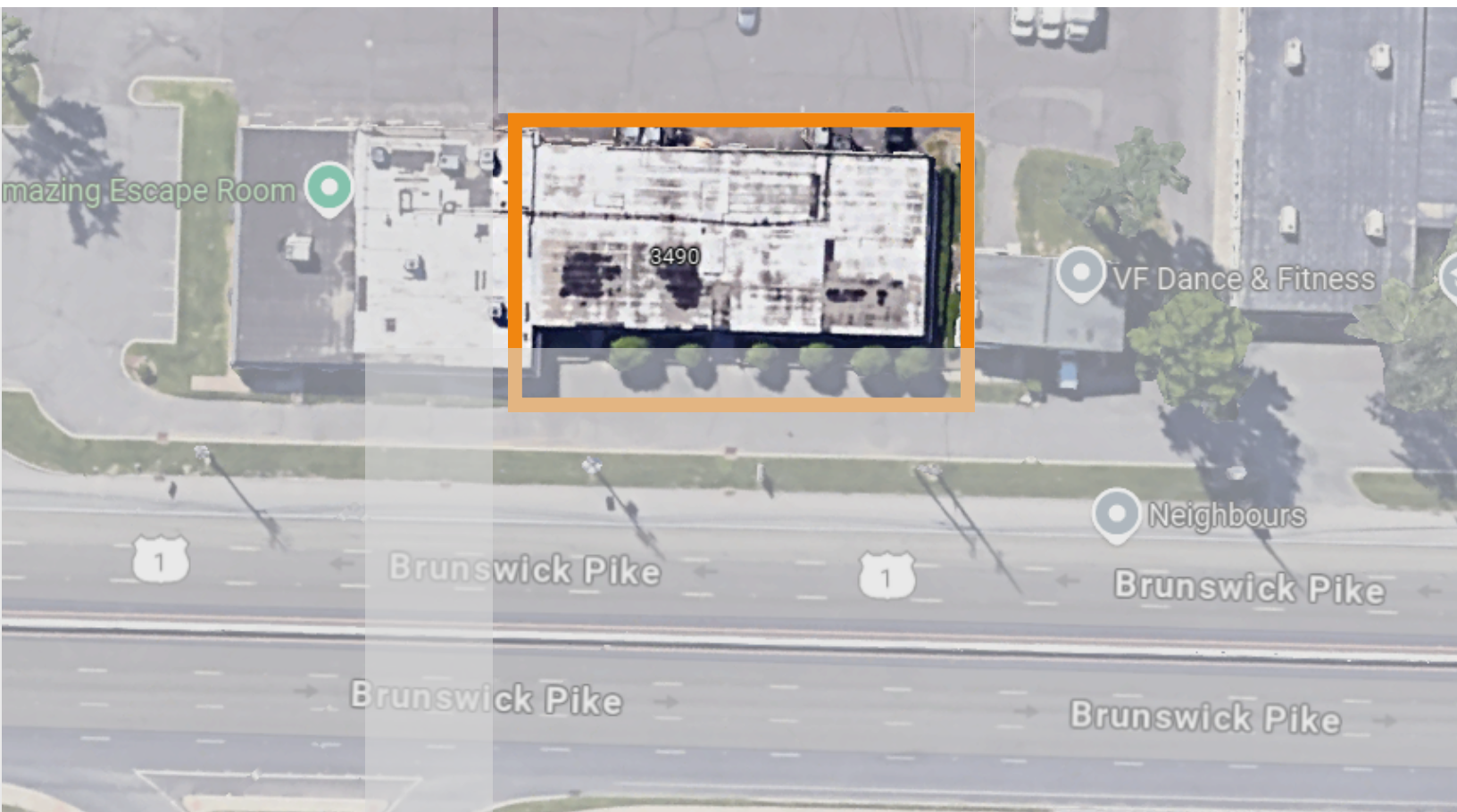
**FACADE UPGRADE IN PROGRESS**

**CONTACT FOR  
LEASING**

**IMRAN: +1 732 496 8440 / ANDY: +1 609 945 7474  
LEASING@ONYXRLT.COM**



**UP TO 8,500 SF | PRIME LOCATION | SUBDIVISIBLE**



**CONTACT FOR  
LEASING**

IMRAN: +1 732 496 8440 / ANDY: +1 609 945 7474  
LEASING@ONYXRLT.COM