

MARKETING FLYER

# PARLEY'S CORPORATE CENTER

2455 PARLEY'S WAY | SALT LAKE CITY, UT



**SPENCER WIXOM**

801-633-3891

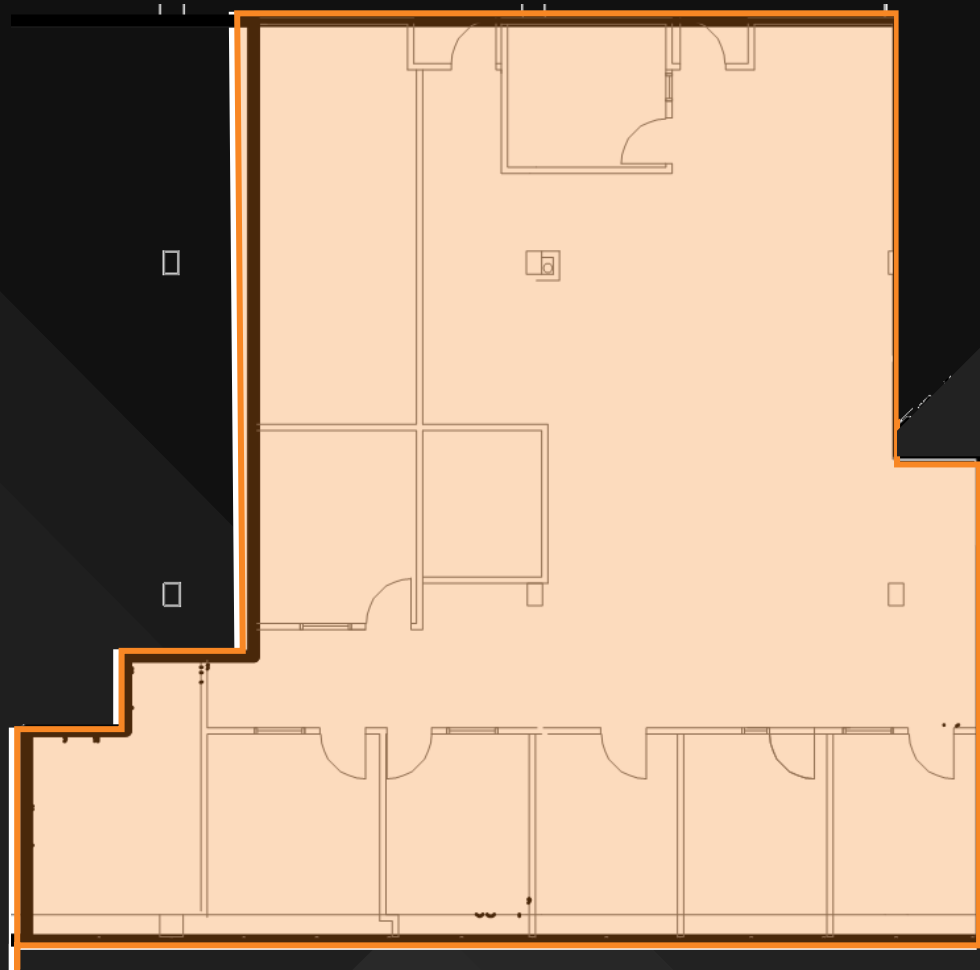
[s\\_wixom@woodburycorp.com](mailto:s_wixom@woodburycorp.com)



## PROJECT HIGHLIGHTS

- Suites from 1,997 to 7,407 SF
- Office Space
- Covered parking structure
- Class-A lobbies and common areas
- Move-in ready
- 4.5 parking stalls / 1,000 SF
- 2 freeway entrances immediately available

**SUITE 120 – 3,628 SF**



**SUITE 230 – 1,997 SF**



**SUITE 250 – 5,451 SF**

