

# PREMIUM LEASE SPACE

SUITE 305 | KENOSHA INNOVATION CENTER



**11,765 SF**  
FULL SERVICE GROSS  
SHELL SPACE

**\$30**  
/sq ft



**3rd FLOOR**  
PREMIUM  
LOCATION



**FLEXIBLE  
LAYOUT**  
YOUR VISION



**IMMEDIATE  
AVAILABILITY**



**BUILT FOR  
INNOVATION**

## KENOSHA INNOVATION CENTER (KIC)

A state of the art facility built to inspire innovation, collaboration, and economic growth in the heart of Kenosha, Wisconsin. This three story, 64,000 square foot building serves as the cornerstone of the 107 acre Kenosha Innovation Neighborhood (KIN), a mixed-use redevelopment. Tenants can take advantage of a variety of amenities, including the Launch Pad, conference rooms, the Skyline Lounge, and an outdoor amphitheater.

## AMENITIES & COMMUNITY



**LAUNCH PAD**  
Event &  
Innovation  
Space



**CONFERENCE  
ROOMS**  
Meet. Connect.  
Collaborate.



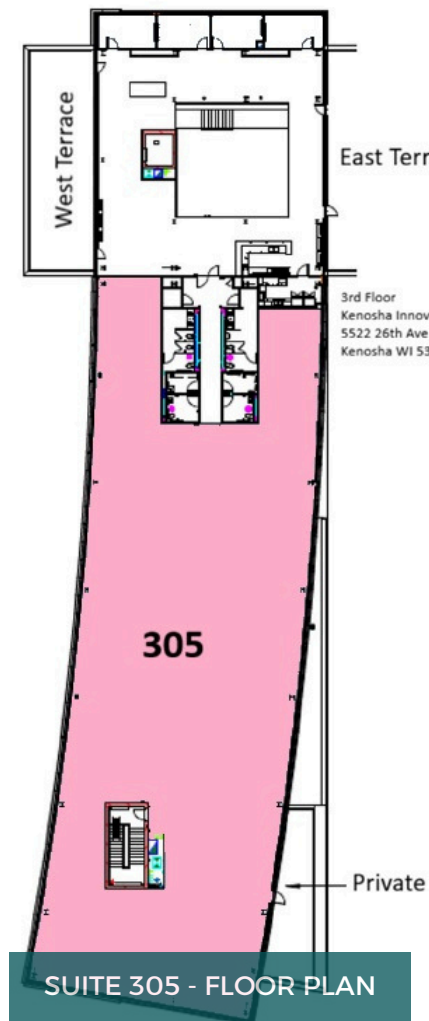
**107 ACRE  
INNOVATION  
NEIGHBORHOOD**  
A Thriving Hub for  
Business & Growth



**SKYLINE LOUNGE**  
Relax. Recharge.  
Inspire.



**OUTDOOR  
AMPHITHEATER**  
Events. Gatherings.  
Community.



## SPACE HIGHLIGHTS



Floor-to-ceiling windows with abundant natural light



Open, flexible shell space ready for your custom buildout



Modern industrial design with exposed ceilings



Access to building amenities including the Launch Pad, Skyline Lounge and more

**WHERE IDEAS BECOME  
COMPANIES,  
COMPANIES CREATE JOBS AND  
OPPORTUNITIES MULTIPLY**



**DAVID SALINAS**  
KIC Director



262-467-2682



KIC@innovateKIN.org



5522 26<sup>th</sup> Ave, Kenosha, WI

