

FOR SALE OR LEASE

FREESTANDING RETAIL BOX 27,144 SF

4014 E MARTIN WAY, OLYMPIA, WA 98506



Property Highlights

27,144 SF stand-alone retail/warehouse

High visibility building on 1.98 acres on one of East Olympia's busiest arterials

Well located on heavily traveled Martin Way

65 parking stalls with easy access to I-5

Listed for lease at \$15 PSF + NNN

Listed for sale at \$6,200,000

RYAN HADDOCK

360.596.9151

ryan.haddock@kidder.com

KIDDER.COM

This information supplied herein is from sources we deem reliable. It is provided without any representation, warranty, or guarantee, expressed or implied as to its accuracy. Prospective Buyer or Tenant should conduct an independent investigation and verification of all matters deemed to be material, including, but not limited to, statements of income and expenses. Consult your attorney, accountant, or other professional advisor.

km Kidder
Mathews

FOR LEASE

POPULATION

	1 Mile	3 Miles	5 Miles
2023 TOTAL	8,938	67,565	168,451
2028 PROJECTION	9,097	68,469	172,936
2020 CENSUS	8,759	65,897	163,510
PROJECTED GROWTH 2023 - 2028	0.4%	0.3%	0.5%

HOUSEHOLDS

	1 Mile	3 Miles	5 Miles
2023 TOTAL	3,902	27,609	68,578
2028 PROJECTED	3,948	27,709	69,676
2020 CENSUS	3,904	26,803	65,630
GROWTH 2023 - 2028	0.2%	-	0.3%

INCOME

	1 Mile	3 Miles	5 Miles
2023 AVERAGE HH INCOME	\$83,202	\$114,052	\$115,706
2028 PROJECTED HH INCOME	\$88,499	\$123,493	\$123,370
ANNUAL CHANGE 2023 - 2028	1.3%	1.7%	1.3%

EMPLOYMENT

	1 Mile	3 Miles	5 Miles
TOTAL BUSINESSES	953	3,113	7,057
TOTAL EMPLOYEES	10,640	31,126	67,893
WHITE COLLAR WORKERS	61.3%	64.2%	65.7%
BLUE COLLAR WORKERS	38.7%	35.8%	34.3%

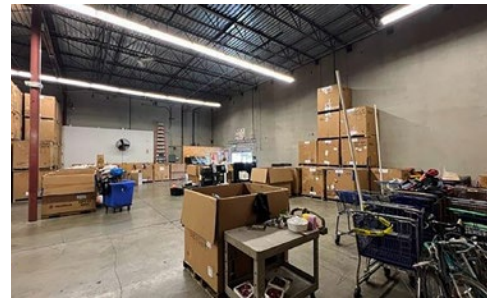
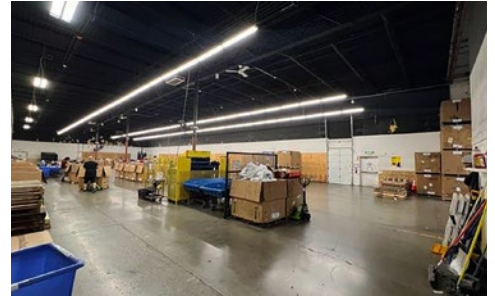


KIDDER.COM

This information supplied herein is from sources we deem reliable. It is provided without any representation, warranty, or guarantee, expressed or implied as to its accuracy. Prospective Buyer or Tenant should conduct an independent investigation and verification of all matters deemed to be material, including, but not limited to, statements of income and expenses. Consult your attorney, accountant, or other professional advisor.



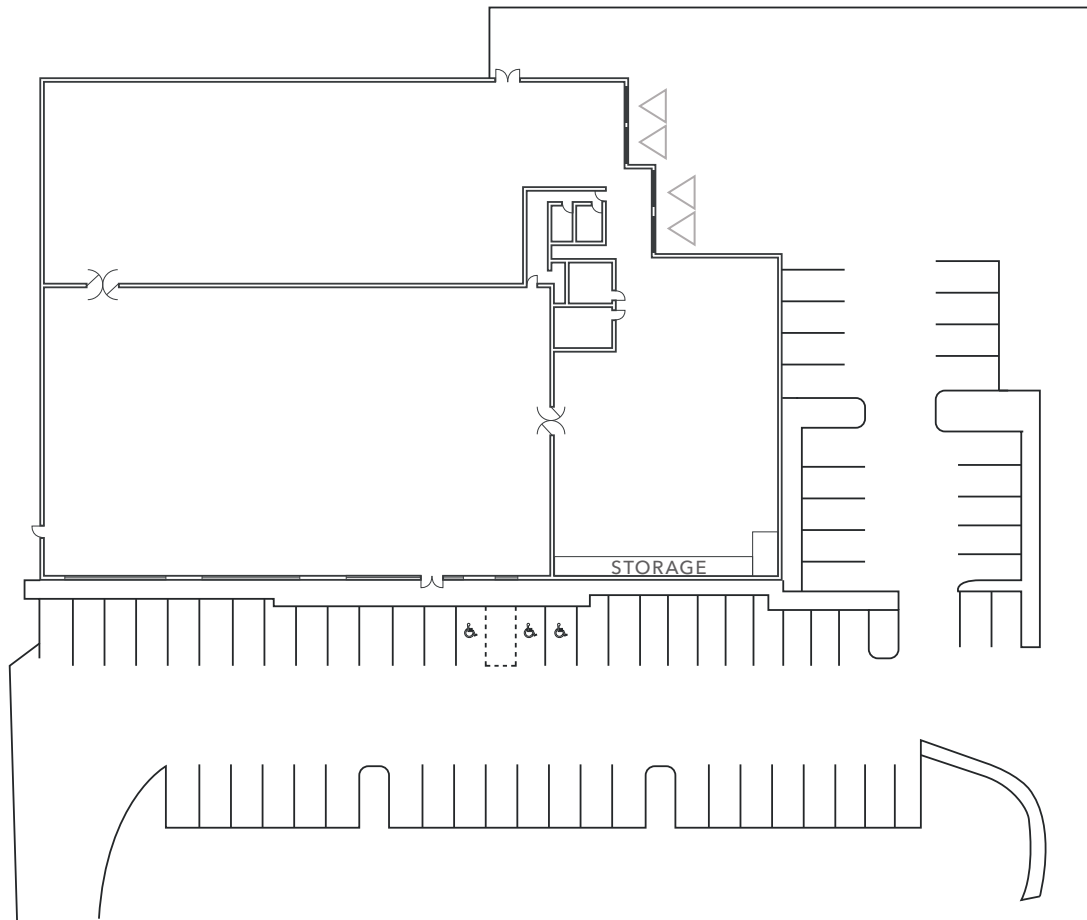
FOR LEASE



This information supplied herein is from sources we deem reliable. It is provided without any representation, warranty, or guarantee, expressed or implied as to its accuracy. Prospective Buyer or Tenant should conduct an independent investigation and verification of all matters deemed to be material, including, but not limited to, statements of income and expenses. Consult your attorney, accountant, or other professional advisor.



Pictures taken by SH&H Valuation and Consulting



△ Dock-high loading

