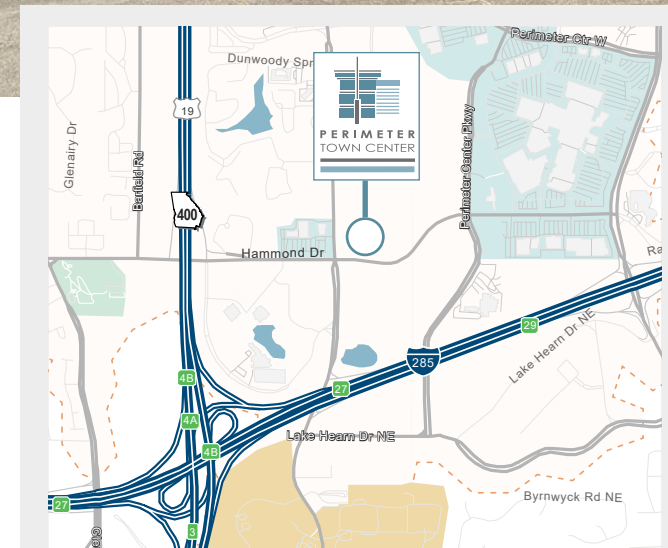


# Medical Office

6105-E Peachtree Dunwoody Rd, Atlanta, GA 30328

## HIGHLIGHTS

- Available:
  - **SUITE 290 - 3,161 RSF (FIRST GENERATION)**
  - **SUITE 285 - 2,083 RSF (FIRST GENERATION)**
- No hospital use restrictions
- Ample free surface and covered parking (4:1,000)
- Eight on-site restaurants and a gourmet coffee shop
- On-site management & building engineers
- 24-hour on-site manned security
- Exceptional ingress/egress
- 1/10th of a mile from Dunwoody rail station

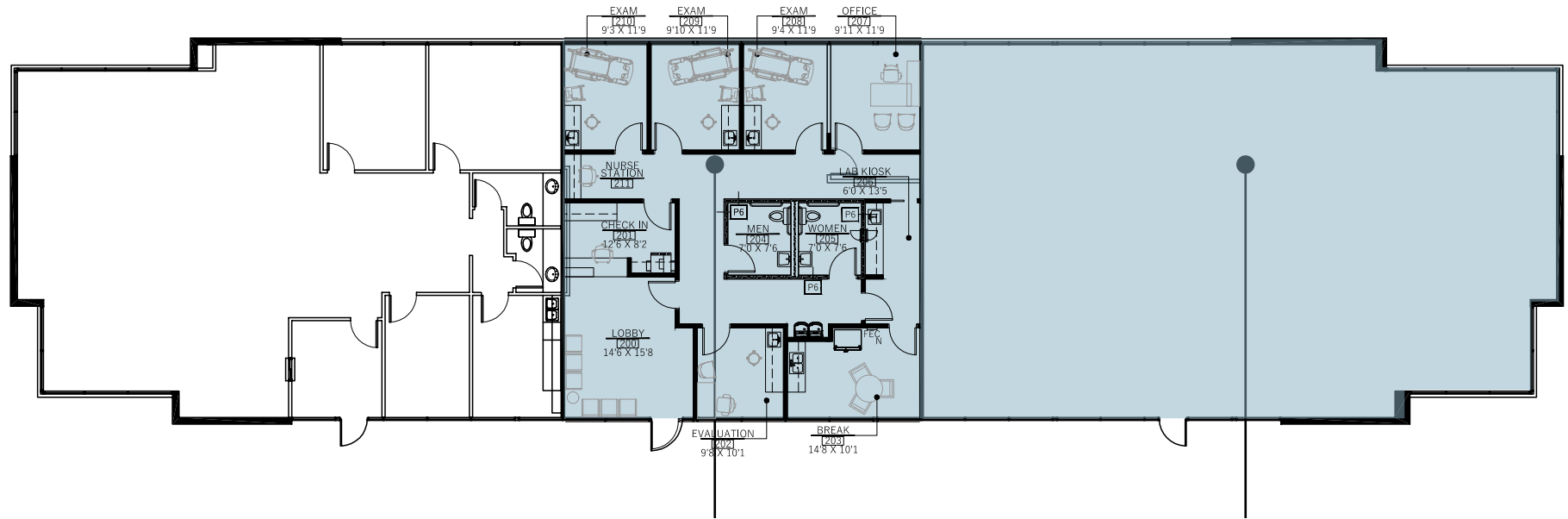
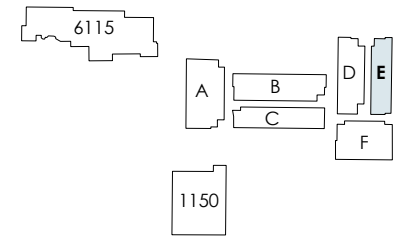


For Office Leasing, please contact  
**KEVIN EHRINGER**  
770.913.3960  
kehringer@ackermanco.net

Ackerman & Co.

# Building 6105 - E | Floor 2

6105 Peachtree Dunwoody Rd, Atlanta, GA 30328



**Suite 285**  
2,083 RSF

**Suite 290**  
3,161 RSF

**Contiguous Space Available | 5,244 RSF**



For Office Leasing, please contact  
**KEVIN EHRINGER**  
770.913.3960  
kehringer@ackermanco.net

Ackerman & Co.