



# FOR LEASE

**SPACE AVAILABLE**

**3650 SQFT**

**LEASE RATE**

**\$26 - 30 /SF/YR**

**LEASE TYPE**

**Full/Modified  
Gross Lease**

**OCCUPANCY**

**IMMEDIATE**

**SUITE 200 - 3030 W CLEARWATER AVE KENNEWICK, WA 99336**



## PROPERTY HIGHLIGHTS

- **Professional Office Environment-** well-maintained multi-tenant building with modern infrastructure.
- **Abundant On-Site Parking** -generous parking ratio for employees and visitors.
- **24/7 Secure Facility:** Exterior Video surveillance System.
- High-visibility monument signage available in front of the building.
- Abundant natural light with energy-efficient LED lighting.
- High Ceilings enhancing openness and natural light.



# FOR LEASE

**SPACE AVAILABLE**

**3650 SQFT**

**LEASE RATE**

**\$26 - 30 /SF/YR**

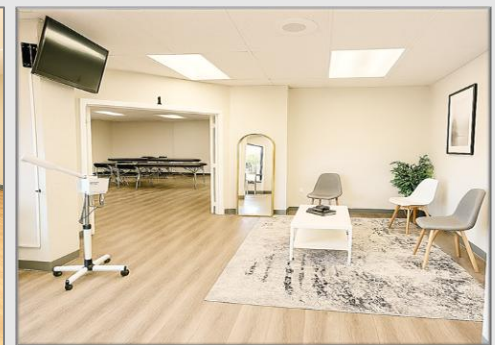
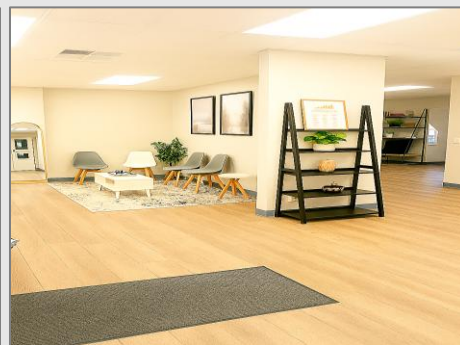
**LEASE TYPE**

**Full/Modified  
Gross Lease**

**OCCUPANCY**

**IMMEDIATE**

**SUITE 200 - 3030 W CLEARWATER AVE KENNEWICK, WA 99336**



## INTERIOR HIGHLIGHTS

- Impressive high-ceiling reception area creating a welcoming first impression.
- Professional Lobby/Reception area with welcoming client entry.
- Efficient layout featuring open multiple private offices
- Elegant hardwood flooring throughout the space.
- Spacious conference room with pre-installed wiring for seamless connectivity.
- Multiple private office rooms suitable for various business needs.
- Dedicated break room for staff convenience and comfort.

**Suresh Muthuswamy**

[suresh@asaprs.com](mailto:suresh@asaprs.com)

**Cell: 425.442.6431**

**Sathesh Natarajan**

**Cell: 425.222.2530**

[contact@asaproperties.net](mailto:contact@asaproperties.net)

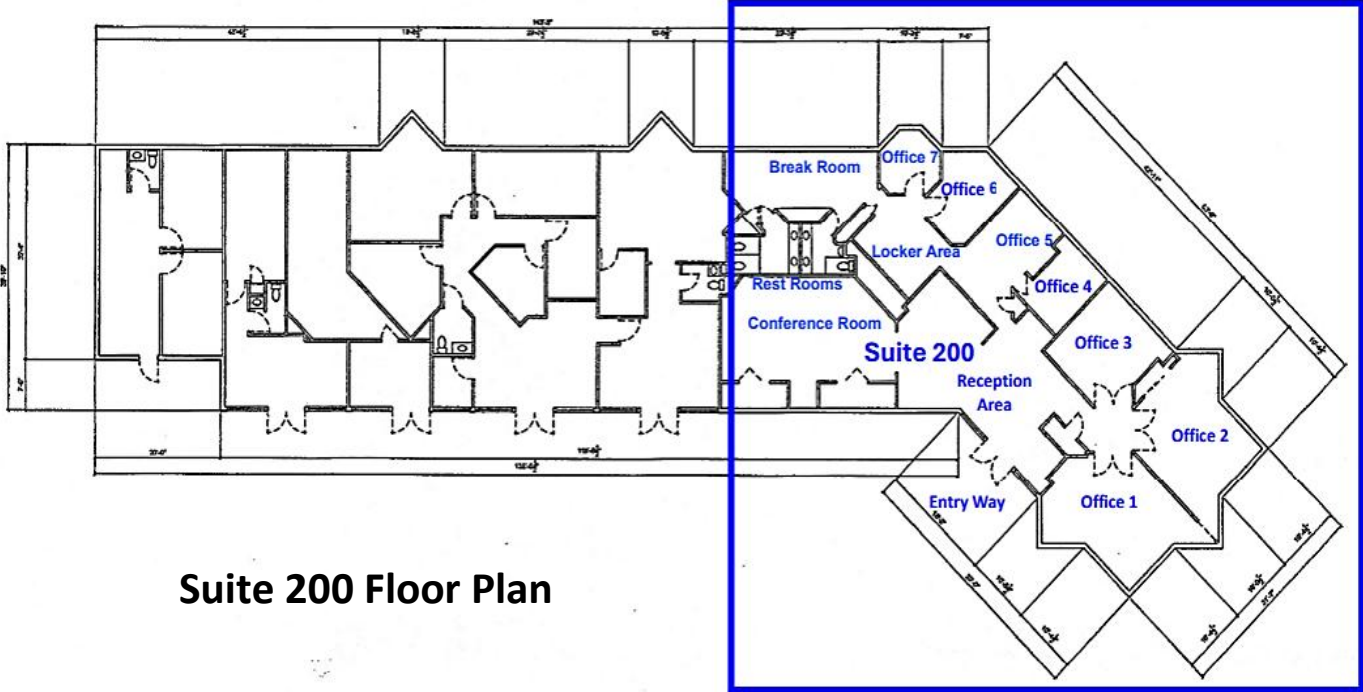
[www.asaproperties.net](http://www.asaproperties.net)



# FOR LEASE

<b>SPACE AVAILABLE</b> 3650 SQFT	<b>LEASE RATE</b> \$26 - 30 /SF/YR	<b>LEASE TYPE</b> Full/Modified Gross Lease	<b>OCCUPANCY</b> IMMEDIATE
-------------------------------------	---------------------------------------	---	-------------------------------

SUITE 200 - 3030 W CLEARWATER AVE KENNEWICK, WA 99336



Suite 200 Floor Plan



Suresh Muthuswamy  
[suresh@asaprs.com](mailto:suresh@asaprs.com)  
Cell: 425.442.6431

Sathesh Natarajan  
Cell: 425.222.2530

[contact@asaproperties.net](mailto:contact@asaproperties.net)  
[www.asaproperties.net](http://www.asaproperties.net)