



# CLAY HEMPSTEAD

## BUSINESS PARK

8700 CLAY ROAD | HOUSTON, TX 77080

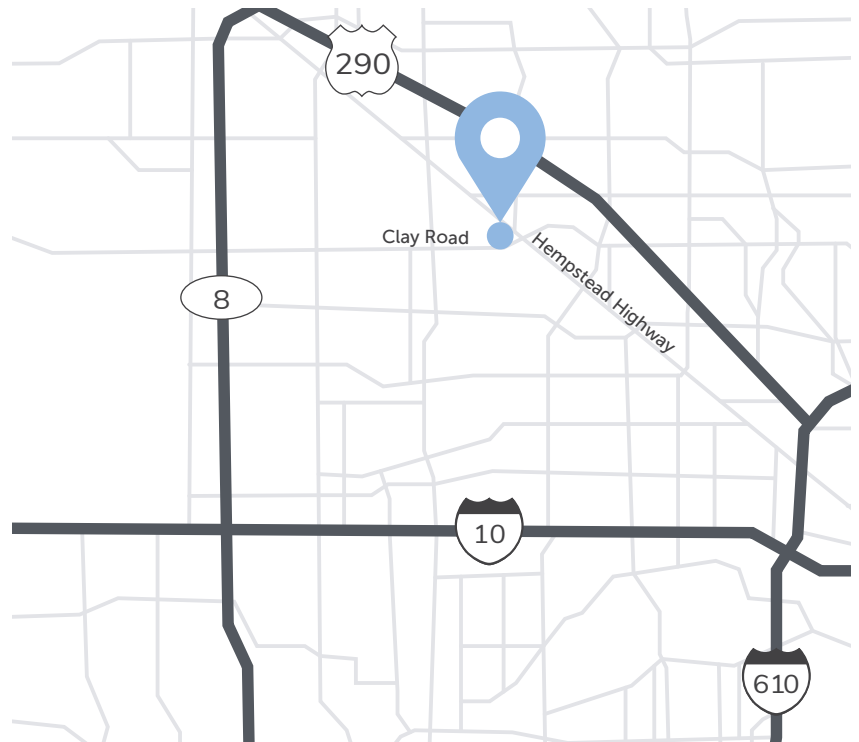


### PROPERTY HIGHLIGHTS

- 4 buildings
- 286,985 SF total (12.19 acres)
- Multiple loading configurations
- Built in 1980
- 16' - 22' clear height
- Frontage on Clay and Hempstead
- Infill NW Houston location
- Access to Beltway 8 and Highway 290
- Security lighting

### SUITE 230 HIGHLIGHTS

- 32,099 SF available
  - 2,182 SF office
  - 29,917 SF warehouse
- 22' clear height
- 6 dock-high doors
- Fully sprinklered



### FOR LEASING INFORMATION, CONTACT:

**BRANDON PREECE**

713.412.1530

brandon.preece@streamrealty.com

**JACK RATHE**

713.300.0298

jack.rathe@streamrealty.com



**ENTRADA**  
PARTNERS

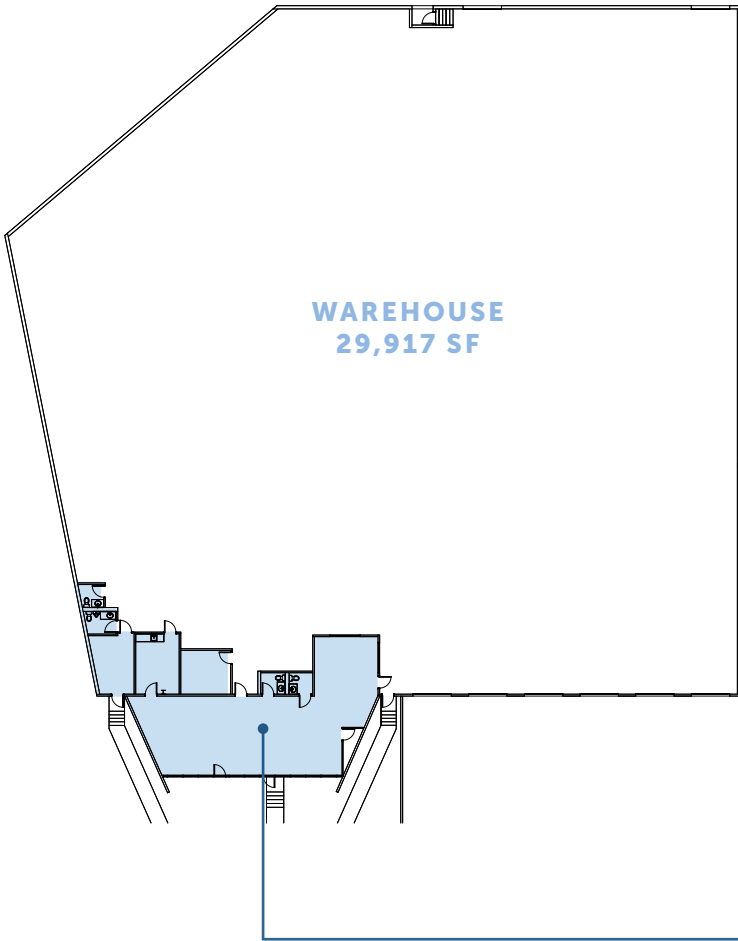


# CLAY HEMPSTEAD

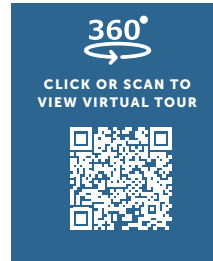
BUSINESS PARK

8700 CLAY ROAD | HOUSTON, TX 77080

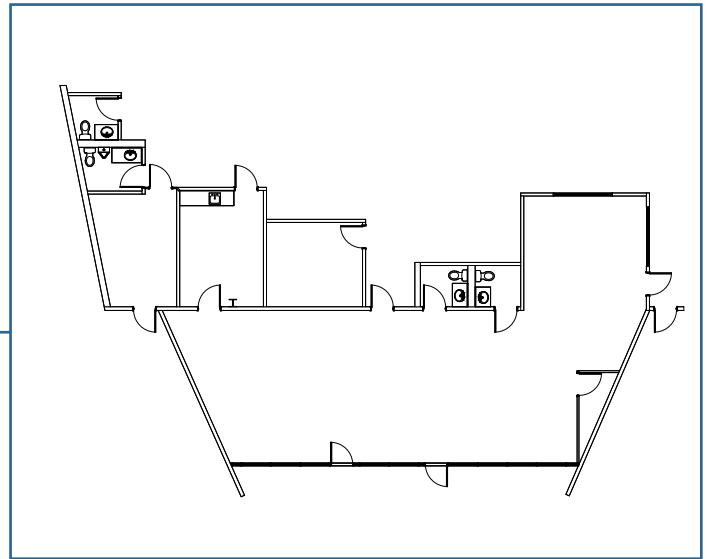
## SUITE 230 | FLOOR PLAN



**WAREHOUSE**  
29,917 SF



**OFFICE | 2,182 SF**



FOR LEASING INFORMATION, CONTACT:

**BRANDON PREECE**

713.412.1530

brandon.preece@streamrealty.com

**JACK RATHE**

713.300.0298

jack.rathe@streamrealty.com

**STREAM**



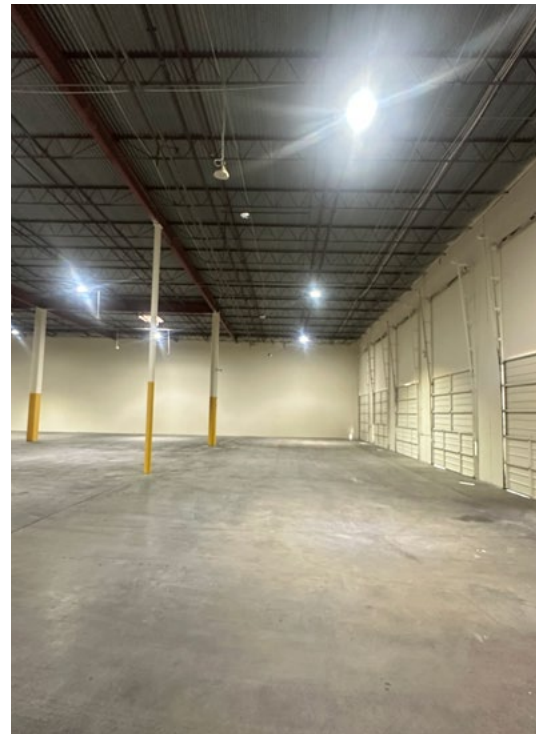
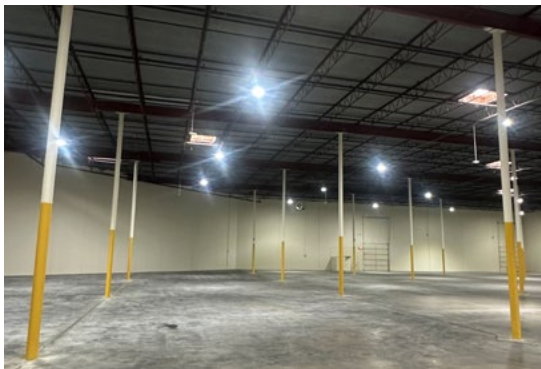
**ENTRADA**  
PARTNERS



# CLAY HEMPSTEAD

BUSINESS PARK

8700 CLAY ROAD | HOUSTON, TX 77080



FOR LEASING INFORMATION, CONTACT:

**BRANDON PREECE**

713.412.1530

[brandon.preece@streamrealty.com](mailto:brandon.preece@streamrealty.com)

**JACK RATHE**

713.300.0298

[jack.rathe@streamrealty.com](mailto:jack.rathe@streamrealty.com)

**STREAM**



**ENTRADA**  
PARTNERS