



VIDEO

Property Description

New office suites are available in the 2nd floor of the Midtown Plaza Court Building. Suites feature an updated lobby with elevator, parking, and modern finishes. Floor plans include a combination of open space and private offices.

Property Highlights

- Midtown amenities - this location is in the center of Midtown's restaurants and services
- Move-in ready suites
- New, modern finishes
- Iconic location with easy highway access
- Easy parking
- Ground level exterior wayfinding signs

Offering Summary

Address:	1100 Classen Drive, OKC, OK 73103
Pricing:	\$24 NNN
Parking:	Parking Deck & Surface Parking
Available SF:	1,234 - 3,164 SF

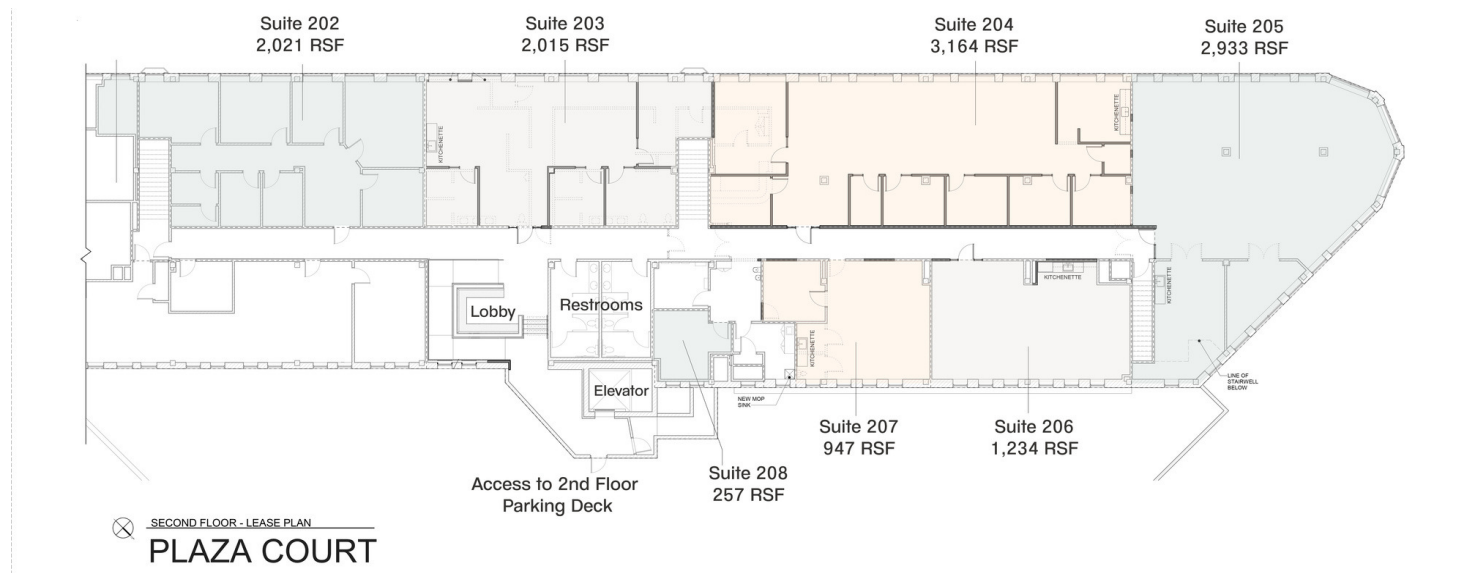
Barta Bailey

INTERIOR PHOTOS
PLAZA COURT OFFICE



Barta Bailey

FLOOR PLAN PLAZA COURT OFFICE



Available Spaces

Suite	Size (SF)	Lease Type	Lease Rate	Description
Suite 204	3,164 SF	NNN	\$24.00 SF/yr	6 private offices, conference room, IT, kitchen & open workspace
Suite 206	1,234 SF	NNN	\$24.00 SF/yr	Open floor plan with kitchenette

