

UNIQUE OFFICE
WAREHOUSE
AVAILABLE

6,400 RSF

FURNITURE
AVAILABLE

SUBLEASE
TERM EXPIRES
JULY 31, 2027



TRANSWESTERN

REAL ESTATE
SERVICES

27610 Commerce Oaks Dr.

Conroe, TX 77385



Industrial Building - Warehouse, Office & Full Kitchen!

Space

- 6,400 RSF Available

Availability

- Within 30 days

Monthly Rental Rate

- \$0.92/PSF

Monthly Operating Expenses

- \$0.42

Expiration Date

- July 31, 2027
(extension of term available)

Parking

- 1.25/1000 Parking Ratio

Power

- 3 Phase 600 amps

Space Features

- Approx 1900 SF office
- Approx 1500 Sf lab with dropped ceiling & A/C
- Approx 3000 SF warehouse
- Office furniture available
- Clear Height 18.5'
- 2 Drive In/ Grade Level Doors

Leasing Information:

Michelle Wogan 713.270.3348

Michelle.Wogan@transwestern.com

The information provided herein was obtained from sources believed reliable; however, Transwestern makes no guarantees, warranties or representations as to the completeness of accuracy thereof. The presentation of this property is submitted subject to errors, omissions, change of price or conditions, prior to sale or lease, or withdrawal without notice. ©2021 Transwestern.

UNIQUE OFFICE
WAREHOUSE
AVAILABLE

6,400 RSF

FURNITURE
AVAILABLE

SUBLEASE
TERM EXPIRES
JULY 31, 2027

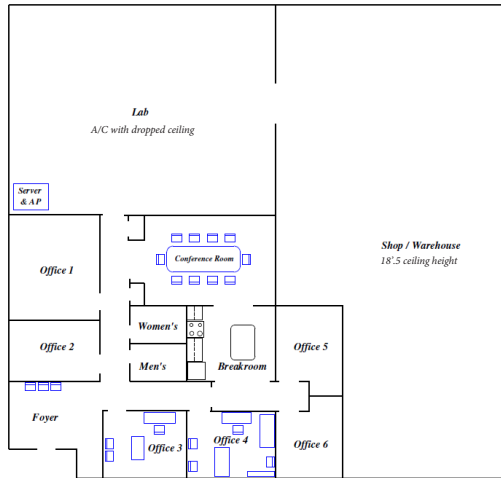


TRANSWESTERN

REAL ESTATE
SERVICES

27610 Commerce Oaks Dr.

Conroe, TX 77385



6400 square feet



Leasing Information:

Michelle Wogan 713.270.3348

Michelle.Wogan@transwestern.com

The information provided herein was obtained from sources believed reliable; however, Transwestern makes no guarantees, warranties or representations as to the completeness of accuracy thereof. The presentation of this property is submitted subject to errors, omissions, change of price or conditions, prior to sale or lease, or withdrawal without notice. ©2021 Transwestern.