

# SEVEN SKIES

FOR LEASE



## PROPERTY DETAILS

168 E. Midvillage Blvd., Sandy, UT 84070

- Available for Lease- \$22-\$24/SF NNN
- Retail Shops:
  - » Building 2: 2,000-4,330 SF
- Surrounded by 1,400+ High-Density Residential Units
- Walking distance to Utah's Lightrail, TRAX
  - » Sandy Civic Center station
  - » 1,500 average riders/day
- Close Proximity to Sandy's South Town Center, South Town Mall, and The Commons @ South Towne

### SURROUNDING TENANTS



## 2025 DEMOS

**EST. POPULATION**  
 1 MILE » 11,912  
 3 MILE » 107,276  
 5 MILE » 291,249

**EST. HOUSEHOLDS**  
 1 MILE » 4,738  
 3 MILE » 37,875  
 5 MILE » 1003,56

**EST. AVERAGE HH INCOME**  
 1 MILE » \$121,260  
 3 MILE » \$136,389  
 5 MILE » \$148,271



**GARRETT BLOMQUIST**  
 gblomquist@newmarkmw.com  
 direct 801.727.4414  
[View Profile](#)

**JOHN STERTZER**  
 jstertzer@newmarkmw.com  
 direct 801.852.8573  
[View Profile](#)

**FULL SERVICE COMMERCIAL REAL ESTATE**  
 312 East South Temple  
 Salt Lake City, Utah 84111  
 Office 801.456.8800  
[www.newmarkmw.com](http://www.newmarkmw.com)



**GARRETT BLOMQUIST**  
 gblomquist@newmarkmw.com  
 direct 801.727.4414  
[View Profile](#)

**JOHN STERTZER**  
 jstertzer@newmarkmw.com  
 direct 801.852.8573  
[View Profile](#)

**FULL SERVICE COMMERCIAL REAL ESTATE**  
 312 East South Temple  
 Salt Lake City, Utah 84111  
 Office 801.456.8800  
[www.newmarkmw.com](http://www.newmarkmw.com)

# BUILDING 1 | NORTH



# NORTHEAST



# BUILDING 2 | SOUTH



# SOUTHWEST

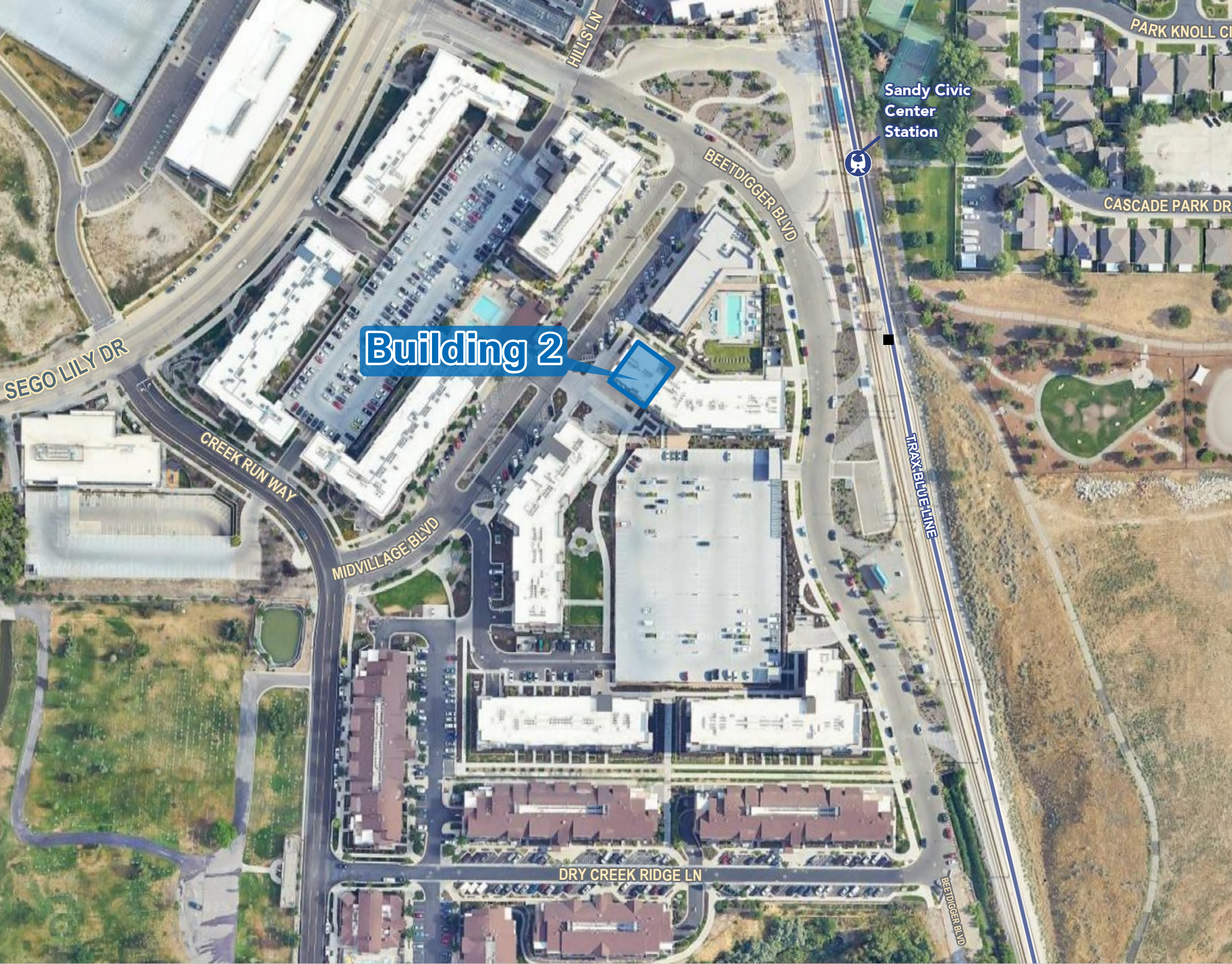


**NEWMARK**  
MOUNTAIN WEST

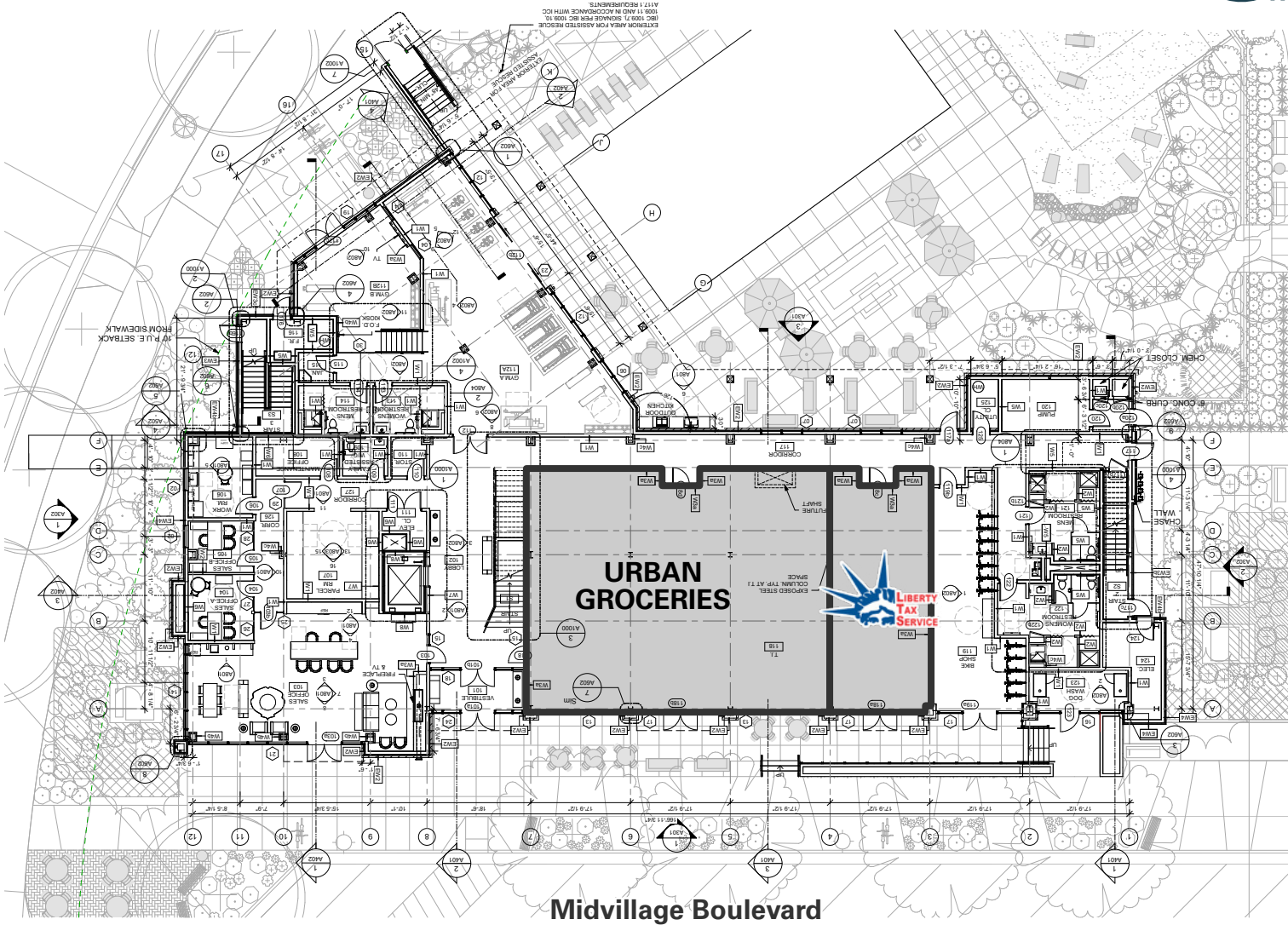
**GARRETT BLOMQUIST**  
gblomquist@newmarkmw.com  
direct 801.727.4414  
[View Profile](#)

**JOHN STERTZER**  
jstertzer@newmarkmw.com  
direct 801.852.8573  
[View Profile](#)

**FULL SERVICE  
COMMERCIAL REAL ESTATE**  
312 East South Temple  
Salt Lake City, Utah 84111  
Office 801.456.8800  
[www.newmarkmw.com](http://www.newmarkmw.com)

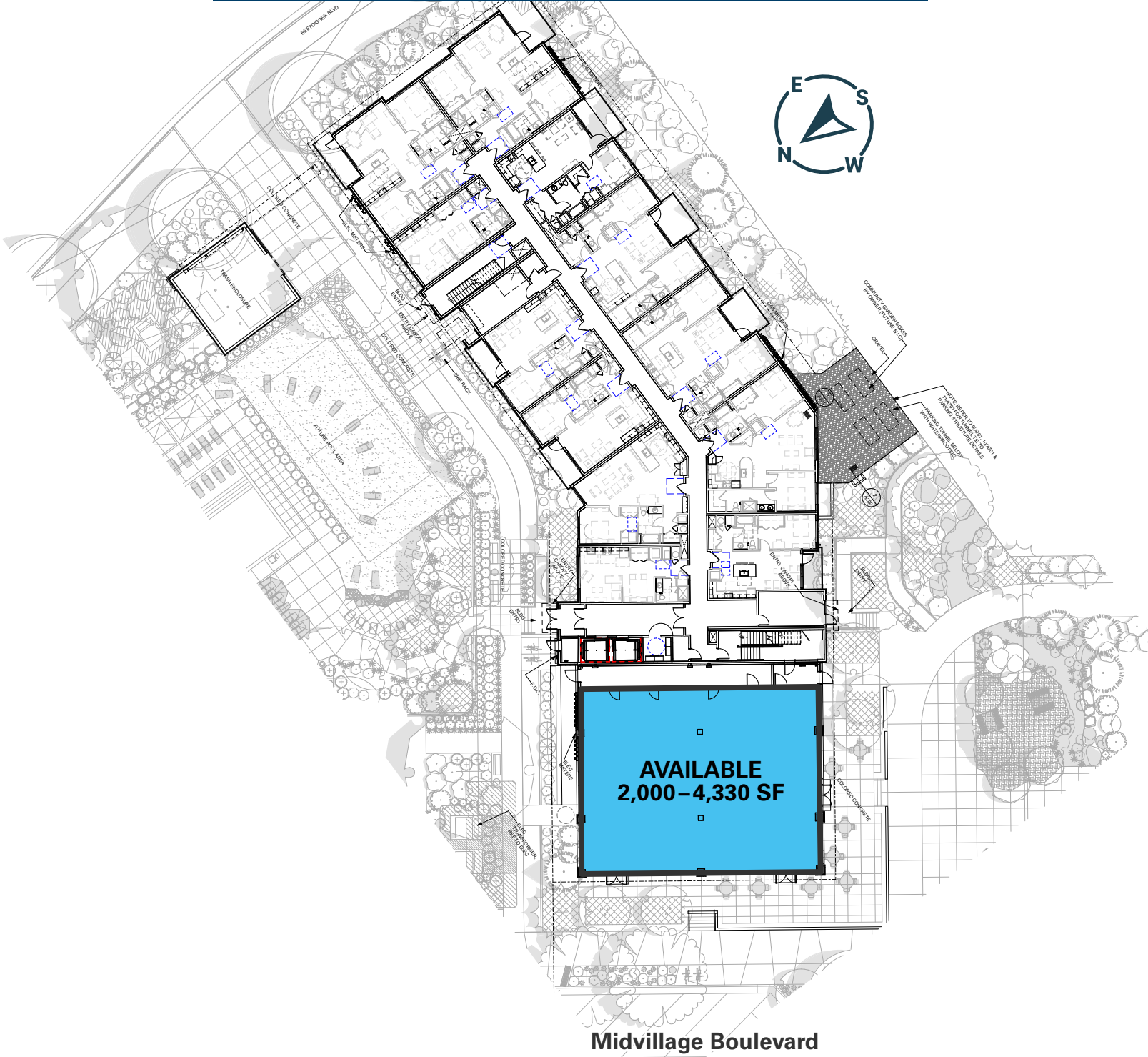


# BUILDING 1 | NORTH



# BUILDING 2 | SOUTH

## LEVEL 1: 2,000-4,330 SF AVAILABLE



**GARRETT BLOMQUIST**  
 gblomquist@newmarkmw.com  
 direct 801.727.4414  
[View Profile](#)

**JOHN STERTZER**  
 jstertzer@newmarkmw.com  
 direct 801.852.8573  
[View Profile](#)

**FULL SERVICE  
 COMMERCIAL REAL ESTATE**  
 312 East South Temple  
 Salt Lake City, Utah 84111  
 Office 801.456.8800  
[www.newmarkmw.com](http://www.newmarkmw.com)

This statement with the information it contains is given with the understanding that all negotiations relating to the purchase, renting or leasing of the property described above shall be conducted through this office. The above information while not guaranteed has been secured from sources we believe to be reliable.