

HUNTWOOD BUSINESS PARK



RENOVATIONS COMPLETE!

1288 SAN LUIS OBISPO AVENUE, HAYWARD, CA 94544

AVAILABLE NOW

FOR MORE INFORMATION:

CHRIS SCHOFIELD, SIOR
510-903-7608
cschofield@lee-associates.com
LIC# 01326198 / CORP. ID# 02069956

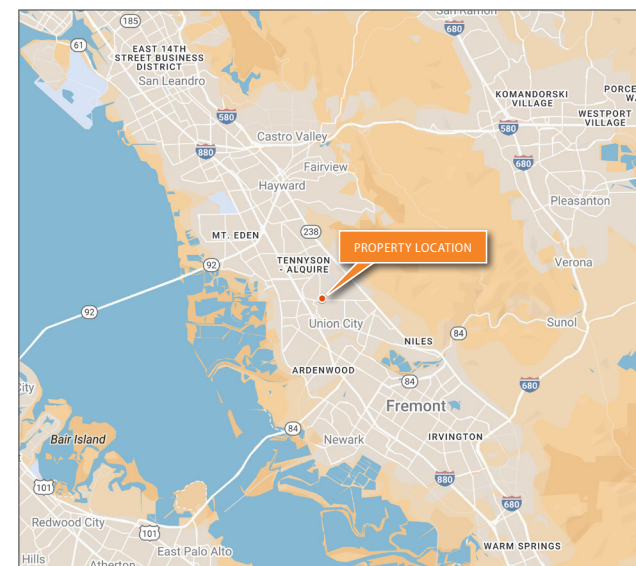
GARRETT DREW
510-903-7613
gdrew@lee-associates.com
LIC# 01923730 / CORP. ID# 02069956

LEE & ASSOCIATES OAKLAND
COMMERCIAL REAL ESTATE, INC.
555 12th Street, Suite 1725
Oakland, CA 94607
www.lee-associates.com



SPACE FEATURES:

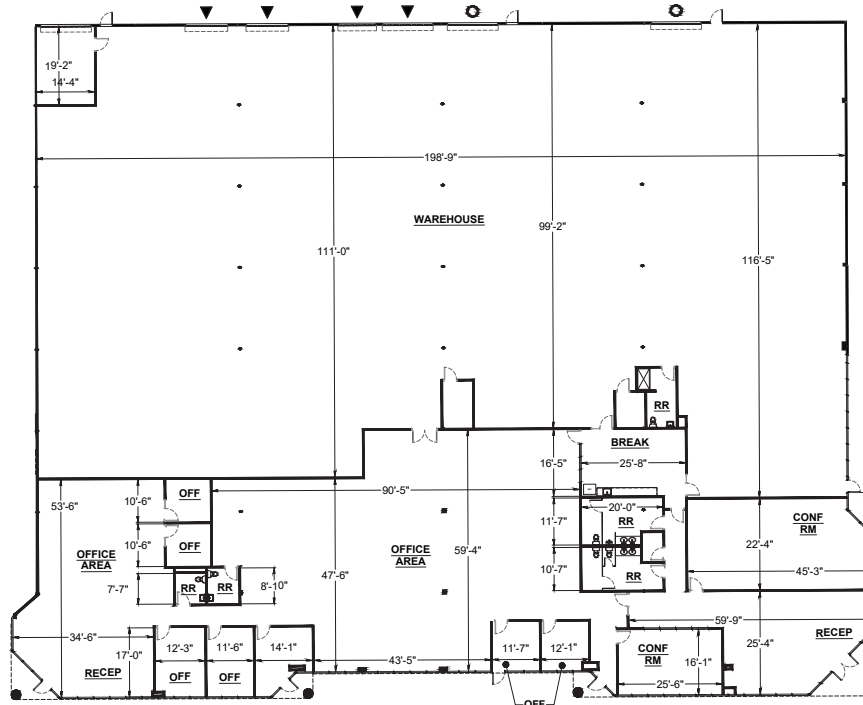
- 33,406± SF
- 21,427± SF warehouse
- 11,979± SF office
- 2 grade-level doors
- 4 docks
- Fully sprinklered
- Warehouse HVAC
- 20' - 22' clear height
- 3.1/1,000 parking ratio
- 2,000 amps @ 277/480 volts power (all power to be verified by tenant)
- Ability to expand within business park
- New improvements including carpet, LVT, paint, and LED lighting



The information contained herein is believed to be accurate but is not warranted as to its accuracy and may change or be updated without notice. Seller or landlord makes no representation as to the environmental condition of the property and recommends purchaser's or tenant's independent investigation.

1288 SAN LUIS OBISPO AVENUE

UNDER NEW OWNERSHIP



FOR MORE INFORMATION

CHRIS SCHOFIELD, SIOR
510-903-7608
cschofield@lee-associates.com
LIC# 01326198 / CORP. ID# 02069956

GARRETT DREW
510-903-7613
gdrew@lee-associates.com
LIC# 01923730 / CORP. ID# 02069956

LEE & ASSOCIATES OAKLAND
COMMERCIAL REAL ESTATE, INC.
555 12th Street, Suite 1725
Oakland, CA 94607
www.lee-associates.com



HUNTWOOD BUSINESS PARK
HAYWARD, CA 94544

 **LEE &
ASSOCIATES**
COMMERCIAL REAL ESTATE SERVICES