

Religious Property for Sale

697 13th Ave NE
Minneapolis, MN 55413



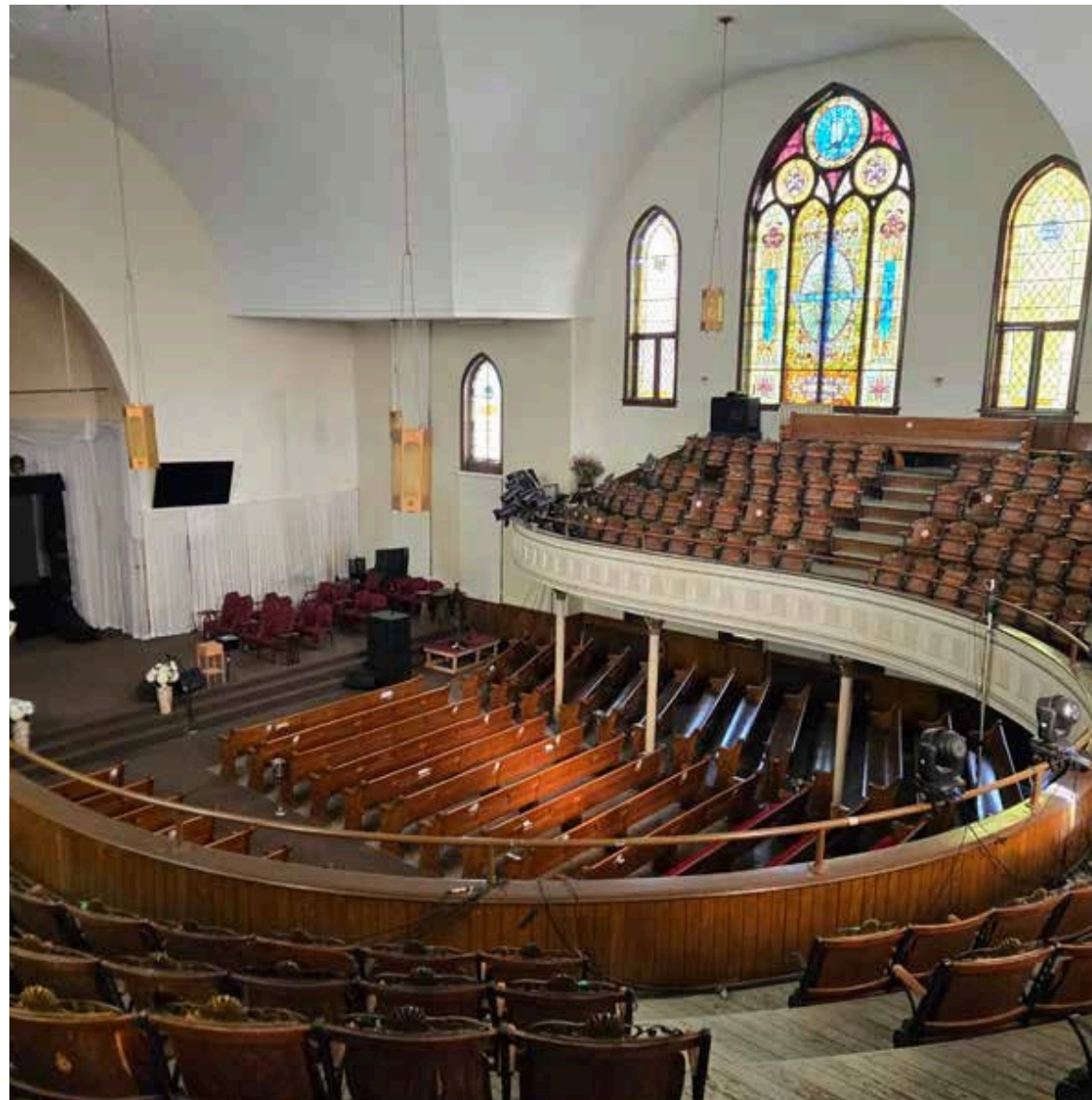
Kevin Peck
612-834-2250

kevinpeck@suntide.com



Property Summary

697 13th Avenue is a religious property located in the heart of Northeast Minneapolis. The building features arched windows, ornate stonework, and a prominent steeple, reflecting a community-centered architecture. The building offers 28,905 square feet across two stories plus balcony, on a 0.39 acre lot. It is ideal for educational, event space, or specialty use.



Property Overview

Address: 697 13th Ave NE Minneapolis, MN 55413

Size: 28,905 SF

Parcel: 1402924130155

Stories: 2

Parcel Size: 0.40 Acres

Year Built: 1906 (Addition added in 1951)

Roof Age: 2017 | 2022

Seating:

- 393 Main Sanctuary
- 260 Balcony

Zoning: UN1 & BF1

Sale Price: \$1,000,000



Highlights

- Great residential location with lots of multi-purpose use
- Handicap Accessible
- Elevator
- Opportunity for Historic Grants
- Basement level with multiple educational spaces
- Chapel
- Kitchen
- Partial fire sprinkler system



Office & Classroom Spaces

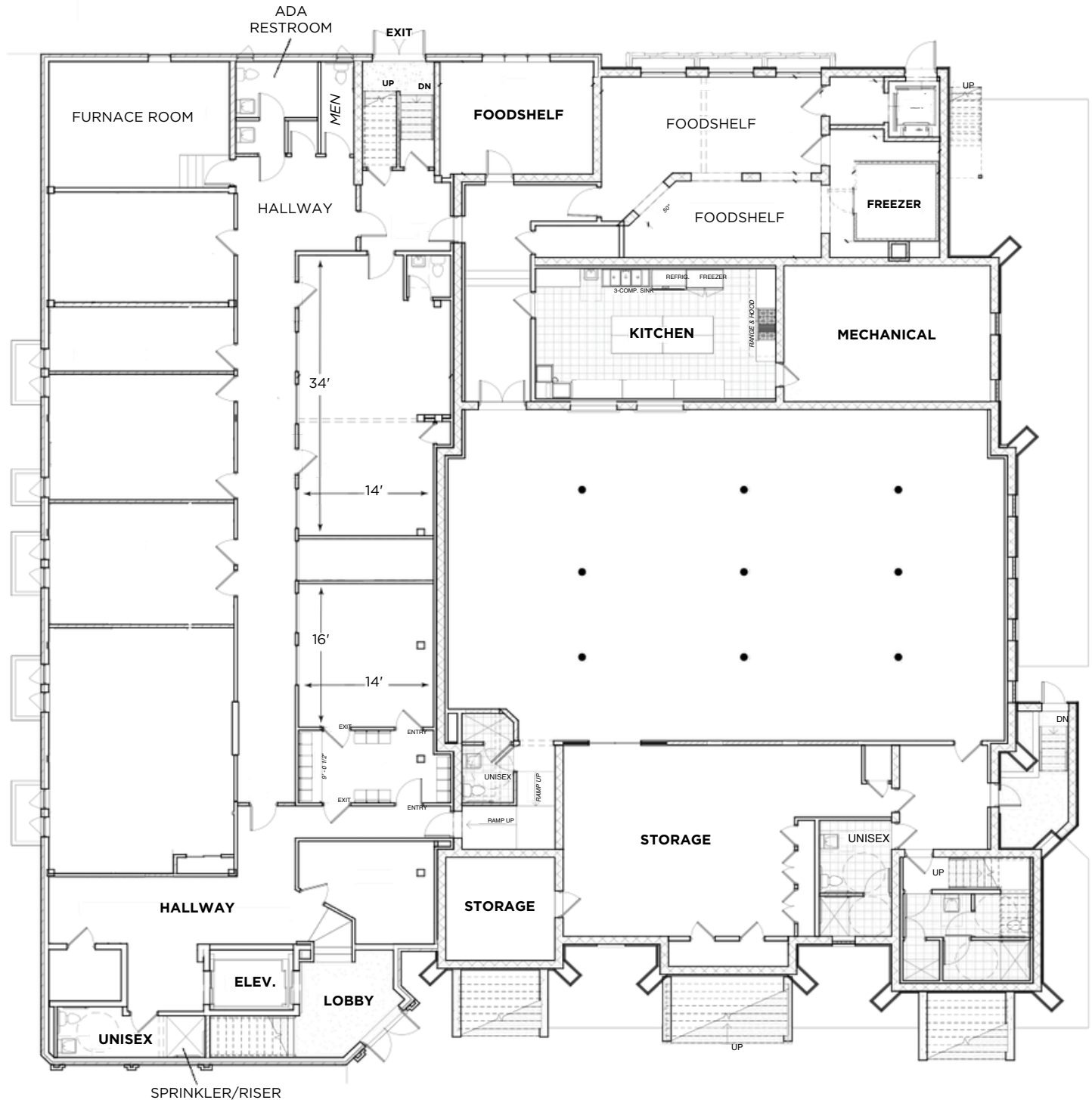


Chapel



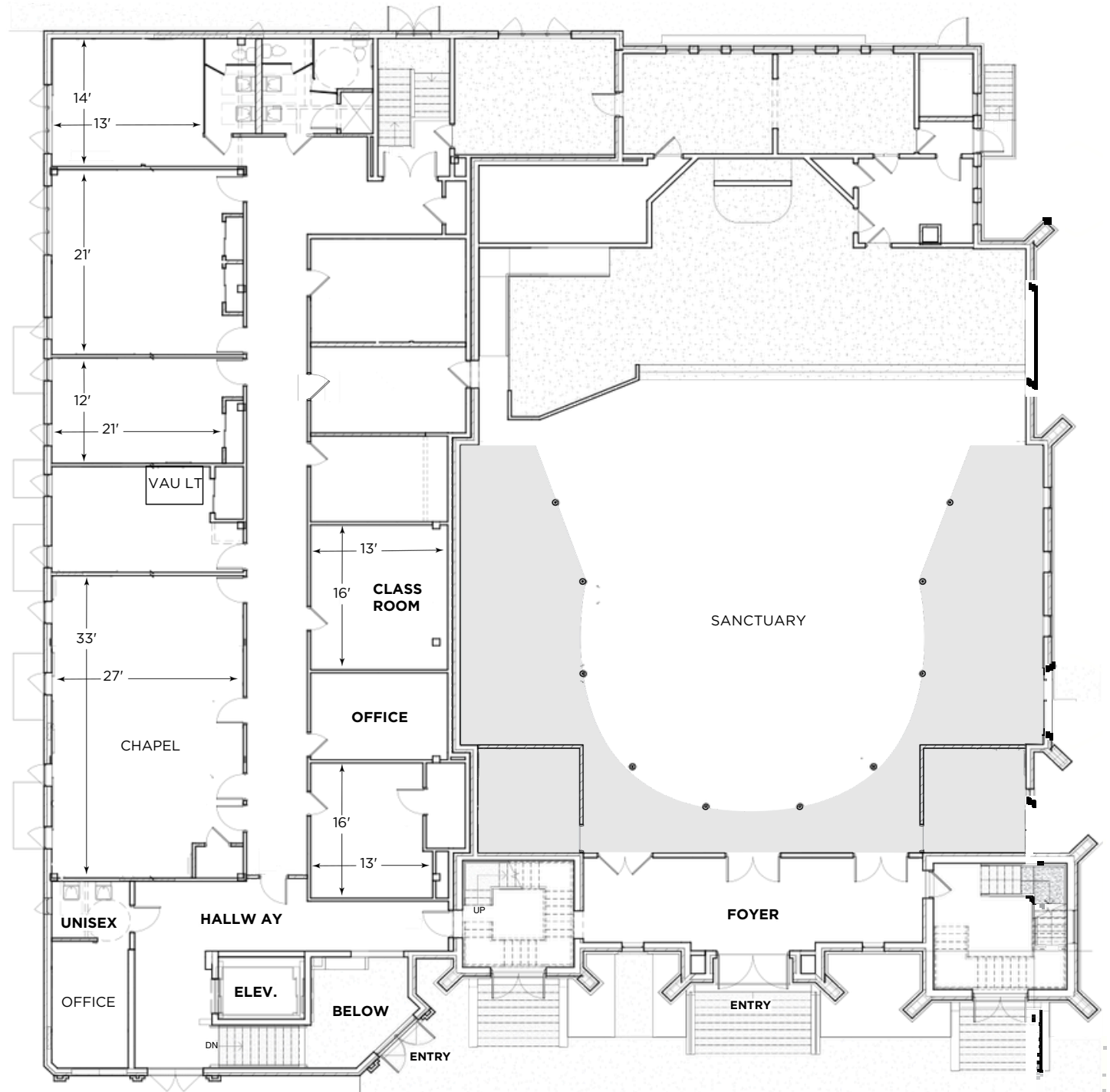
Lower Level

- 7 Classrooms/Offices
- 4 Restrooms
- Fellowship Hall
- Storage
- Kitchen comes with full oven and ventilation

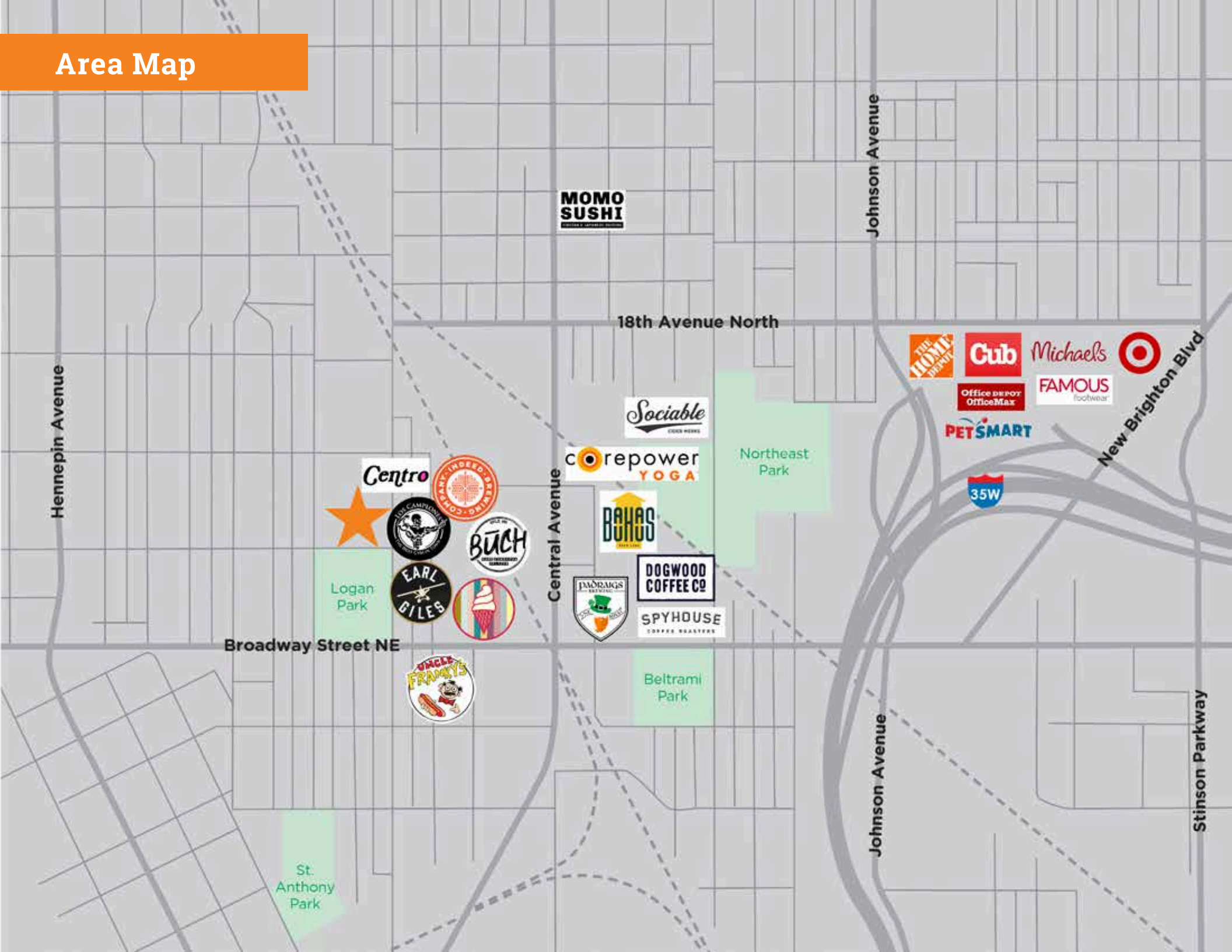


First Floor

- Sanctuary
- Balcony
- 6 Restrooms
- Fellowship Hall
- 8 Classrooms/Offices



Area Map



Hennepin Avenue

Central Avenue

Johnson Avenue

Johnson Avenue

Stinson Parkway

New Brighton Blvd

MOMO SUSHI

18th Avenue North

Sociable
EGGS HERE

corepower
YOGA

Northeast Park

THE HOME DEPOT

Cub

Michaels



Office Depot
OfficeMax

FAMOUS
footwear

PETSMART



Centro



DOGWOOD
COFFEE CO

SPYHOUSE
COFFEE ROASTERS

Logan Park

Broadway Street NE

Beltrami Park

St. Anthony Park