

FOR LEASE

**Primier
Park Street
Frontage**

**Countless
Amenities**

**Street
Front Retail
(±2,000 –
4,000 RSF)**

**Ground Floor
Retail / Office
(±200 – 9,000 RSF)**

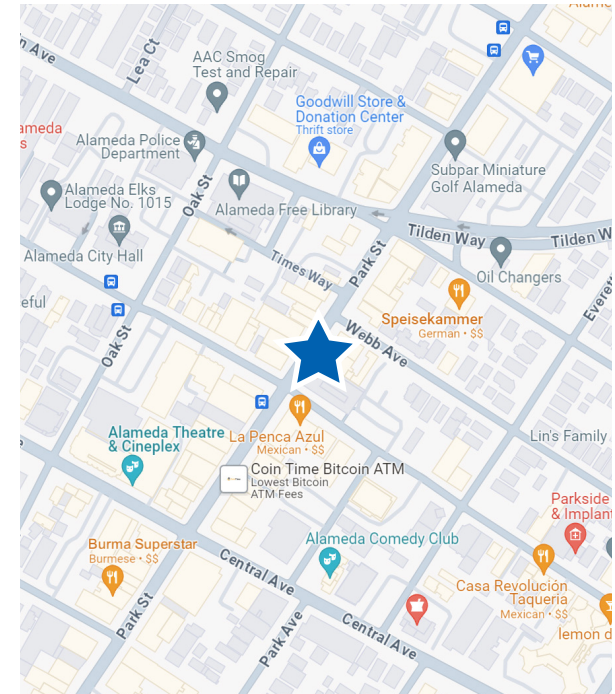


TRANSWESTERN

REAL ESTATE
SERVICES

PARK PLACE ALAMEDA

1500 Park Street (2411 Santa Clara Avenue), Alameda, CA 94501



Availabilities:

- **Park Street Frontage:**
±2,000 – 4,000 RSF
- **Ground Floor Retail / Office:**
±200 – 9,000 RSF

Building Amenities:

- Direct entry with street identity
- New exterior improvements with historical charm
- Located in the heart of Park Street, Alameda
- Parking on-site available

Leasing Information:

Jake Norton
CA LIC 01905366
925.360.9746
Jake.Norton@transwestern.com

The information provided herein was obtained from sources believed reliable; however, Transwestern makes no guarantees, warranties or representations as to the completeness or accuracy thereof. The presentation of this property is submitted subject to errors, omissions, change of price or conditions, prior sale or lease, or withdrawal without notice. **Copyright © 2025 Transwestern.**

PARK PLACE ALAMEDA

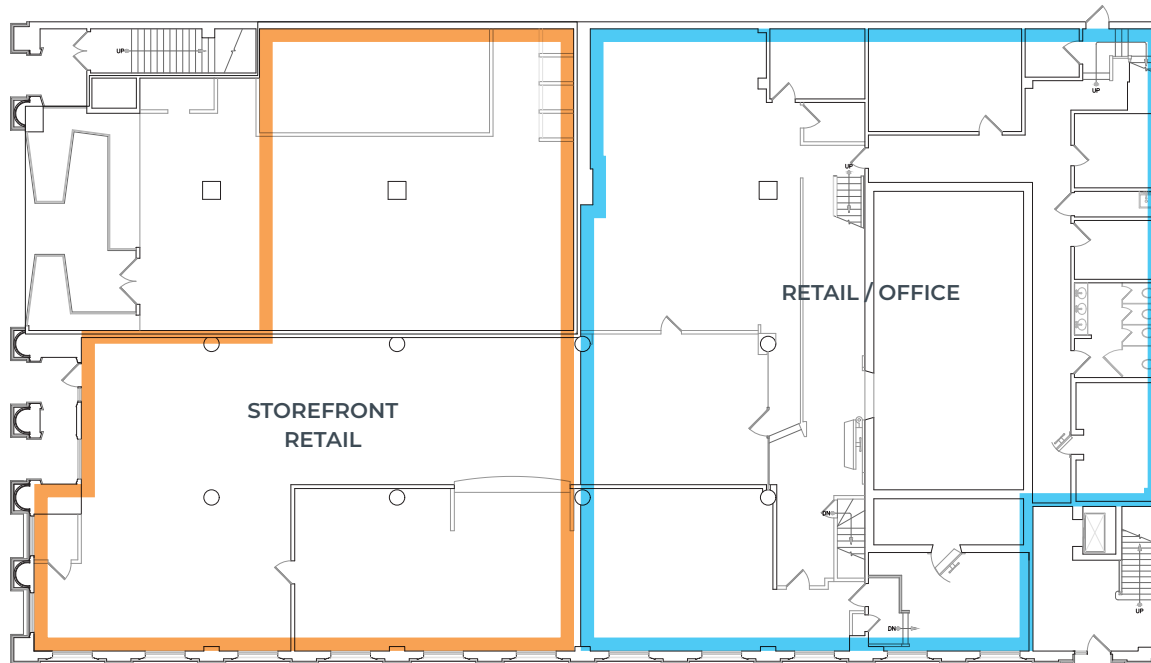
1500 Park Street (2411 Santa Clara Avenue), Alameda, CA 94501


TRANSWESTERN

REAL ESTATE
SERVICES

GROUND FLOOR

-  **STOREFRONT RETAIL**
±2,000 – 4,000 RSF
\$2.50 NNN
-  **RETAIL / OFFICE**
±200 – 9,000 RSF



Leasing Information:

Jake Norton
CA LIC 01905366
925.360.9746
Jake.Norton@transwestern.com

The information provided herein was obtained from sources believed reliable; however, Transwestern makes no guarantees, warranties or representations as to the completeness or accuracy thereof. The presentation of this property is submitted subject to errors, omissions, change of price or conditions, prior sale or lease, or withdrawal without notice. Copyright © 2025 Transwestern.

PARK PLACE ALAMEDA

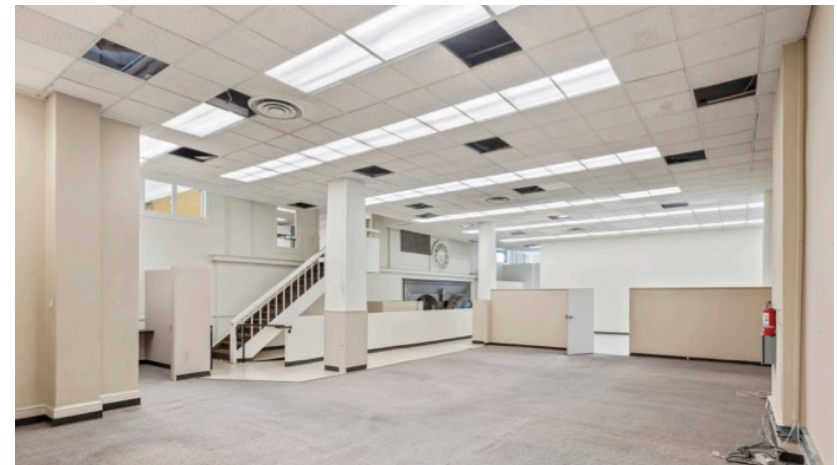
1500 Park Street (2411 Santa Clara Avenue), Alameda, CA 94501



TRANSWESTERN

REAL ESTATE
SERVICES

GROUND FLOOR



Leasing Information:

Jake Norton
CA LIC 01905366
925.360.9746
Jake.Norton@transwestern.com

The information provided herein was obtained from sources believed reliable; however, Transwestern makes no guarantees, warranties or representations as to the completeness of accuracy thereof. The presentation of this property is submitted subject to errors, omissions, change of price or conditions, prior to sale or lease, or withdrawal without notice. **Copyright © 2024 Transwestern.**

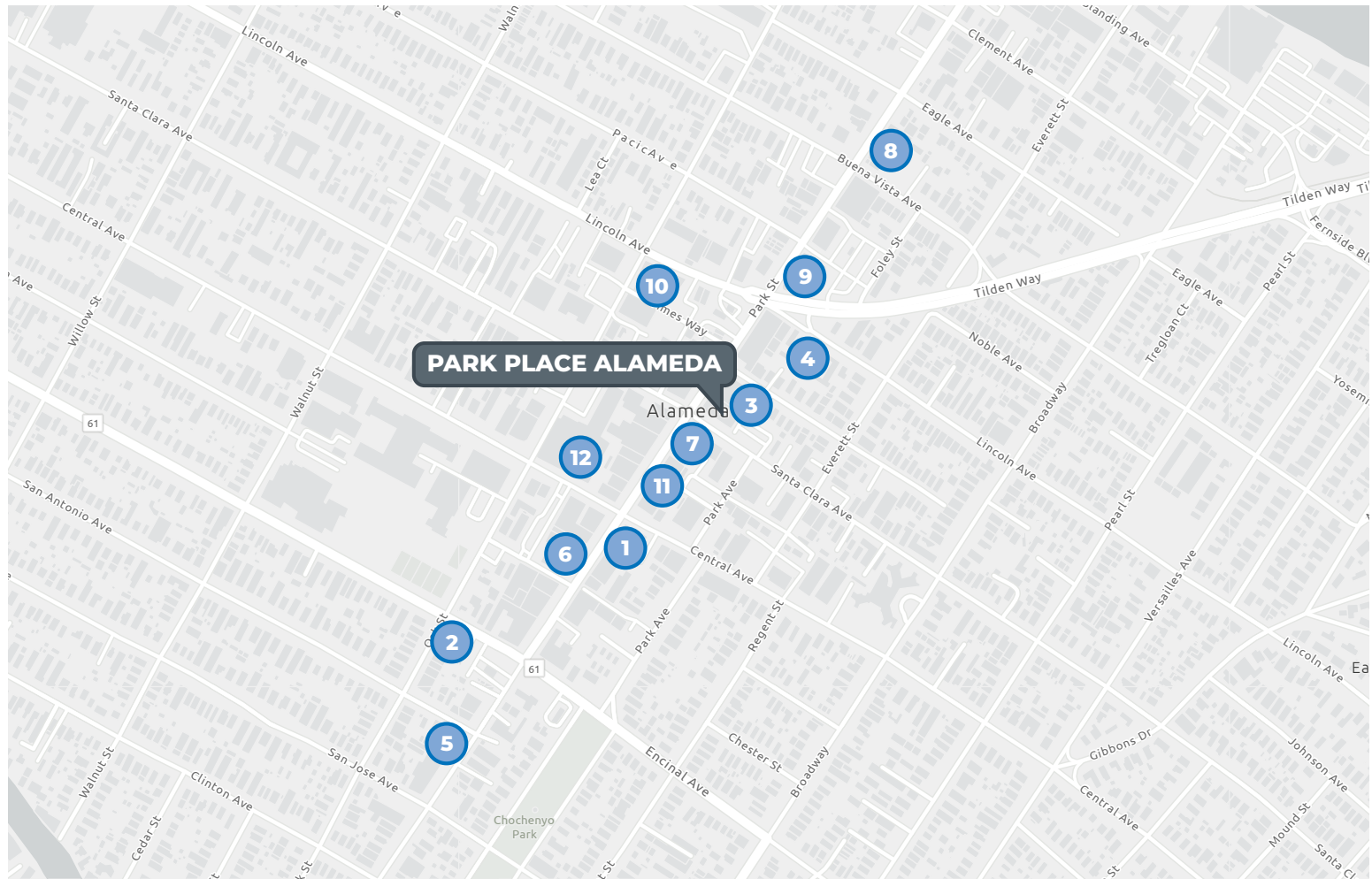
PARK PLACE ALAMEDA

1500 Park Street (2411 Santa Clara Avenue), Alameda, CA 94501



Surrounding Amenities & Services

- 1 Starbucks
- 2 Sidestreet Pho
- 3 Sandwich Board
- 4 Speisekammer
- 5 Julie's Coffee & Tea Garden
- 6 Burma Superstar
- 7 La Penca Azul
- 8 Alameda Island Brewing
- 9 Subpar Miniature Golf Alameda
- 10 Alameda Free Library
- 11 High Scores Arcade
- 12 Alameda Theatre & Cineplex



Leasing Information:

Jake Norton
CA LIC 01905366
925.360.9746
Jake.Norton@transwestern.com

The information provided herein was obtained from sources believed reliable; however, Transwestern makes no guarantees, warranties or representations as to the completeness of accuracy thereof. The presentation of this property is submitted subject to errors, omissions, change of price or conditions, prior to sale or lease, or withdrawal without notice. **Copyright © 2024 Transwestern.**