



12286 E MAIN Road, North East, PA 16428

\$224,900

Redevelopment Opportunity Former Paschke Mum Farm

Strong Development Site in North East on Route 20



Jim Barbour

PA PA RM426122, NY NY 10401341649

814.833.9500

Listing Added: Today

Listing Updated: Today



Details

Asking Price	\$224,900	Property Type	Retail, Mixed Use, Land
Sub Type	Commercial, Industrial, Duplex	Investment Type	Owner/User
Lease Type	Gross	Tenancy	Multi
Number of Tenants	2	Square Footage	2,160
Net Rentable (SqFt)	2,160	Occupancy	100%
Year Built	1900	Year Renovated	2025
Buildings	1	Zoning	B-1
Lot Size (acres)	2.25	APN	37-016-033.0-003.02
Ground Lease	No		

Marketing Description

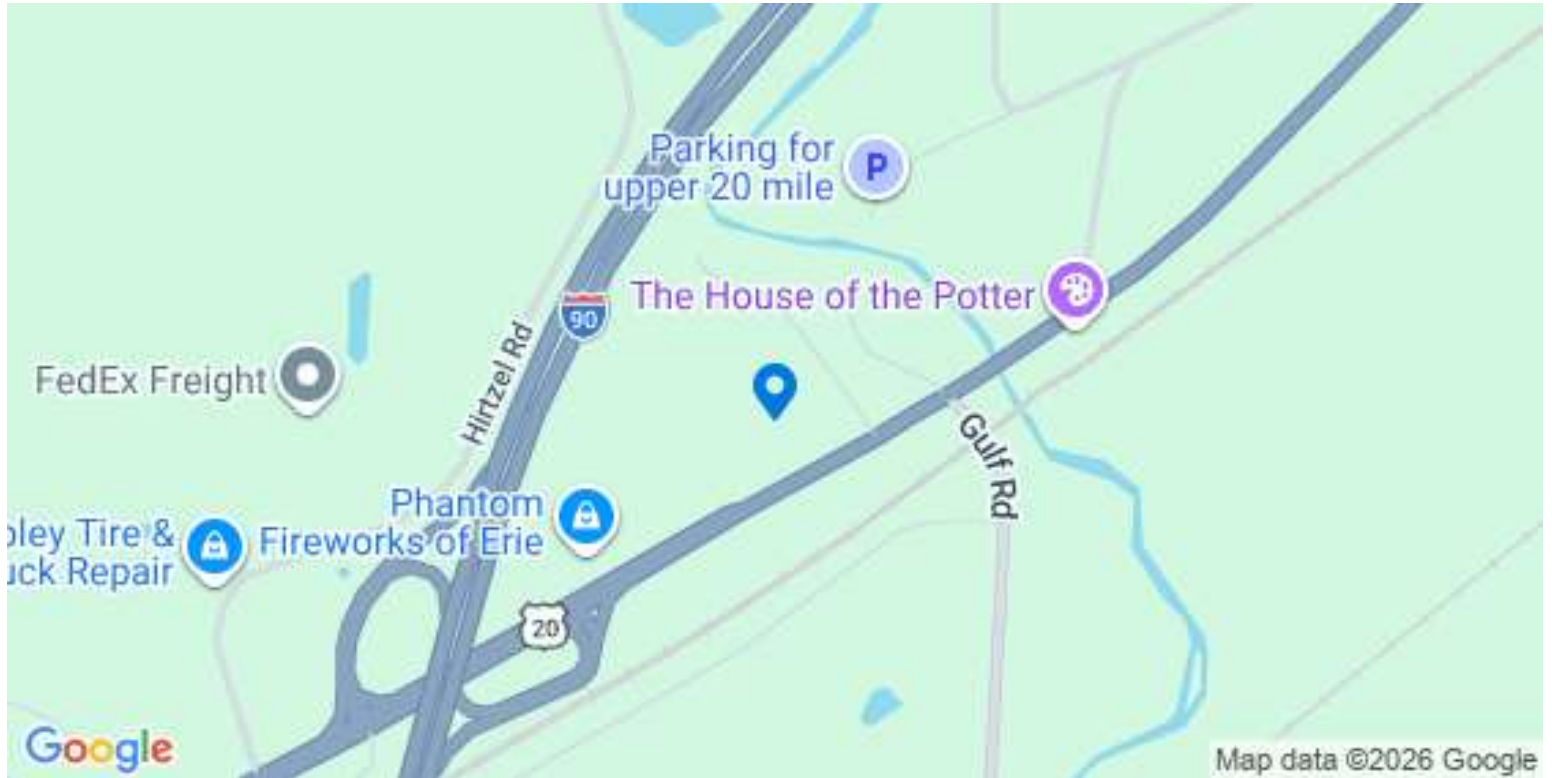
Great opportunity for someone to unlock the additional potential for this property that is commercially zoned. Develop the frontage while retaining the income from the duplex. Great income from the fully occupied duplex that has been rehabbed with all new roof, some sheathing, mechanicals, electric, both baths total renovation septic tank pumped a few months ago, flooring, paint, and leased up with great long term tenants that typically pay before the first. This was formerly the Paschke Mum farm and there are still greenhouse remains and other related items. With all of the frontage and the 20 mile bridge project ending later this year, it is a great opportunity to add a commercial aspect to the property while being able to retain the cash flow from the duplex. There truly are endless possibilities for the long-term development of the property within the zoning ordinance. Disclosure: one of the owners is a PA licensed broker.



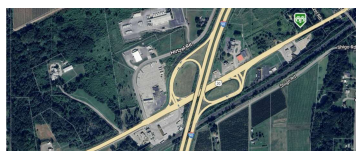
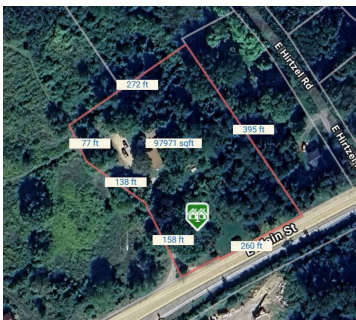
Investment Highlights

- Great opportunity for someone to unlock the additional potential for this property that is commercially zoned
- Develop the frontage while retaining the income from the duplex
- Great income from the fully occupied duplex that has been rehabbed with all new roof, some sheathing, mechanicals, electric, both baths total renovation septic tank pumped a few months ago, flooring, paint, and leased up with great long term tenants that typically pay before the first
- This was formerly the Paschke Mum farm and there are still greenhouse remains and other related items
- With all of the frontage and the 20 mile bridge project ending later this year, it is a great opportunity to add a commercial aspect to the property while being able to retain the cash flow from the duplex
- There truly are endless possibilities for the long-term development of the property within the zoning ordinance

Location (1 Location)



Property Photos (4 photos)



Demographic Insights

