



END CAP SUITE | 6,221 SF AVAILABLE

2395 Pleasantdale Road

Suite 1 | Doraville, GA 30340

OWNED BY:



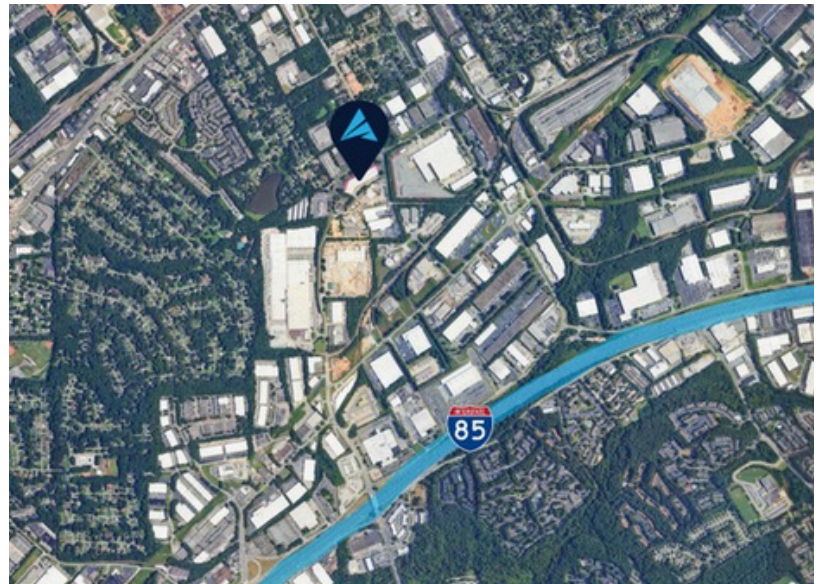
CenterSquare

FOR LEASE



PROPERTY INFORMATION

Total Size:	6,221 SF
Office:	1,879 SF
Warehouse:	4,342 SF
Loading:	Two (2) Dock High Doors
Clear Height:	21'
Available:	Immediately
Location:	+/- 1.2 miles to I-85 +/- 2 miles to I-285 +/- 13 miles to I-75 +/- 28 miles to Atlanta Airport



For more information, please contact:

RYAN BLACKBURN

Office: (404) 974 - 2716
Cell: (404) 821 - 7715
rblackburn@apexindustrialre.com

EVAN ARNOLD

Office: (404) 595 - 1524
Cell: (770) 658 - 4319
earnold@apexindustrialre.com

KELLIE SMITH

Office: (404) 594 - 8228
Cell: (404) 833 - 0955
ksmith@apexindustrialre.com



Although the information contained therein was provided from sources believed to be reliable, Apex Industrial makes no representation, expressed or implied, as to its accuracy and said information is subject to errors, omissions or changes.



END CAP SUITE | 6,221 SF AVAILABLE

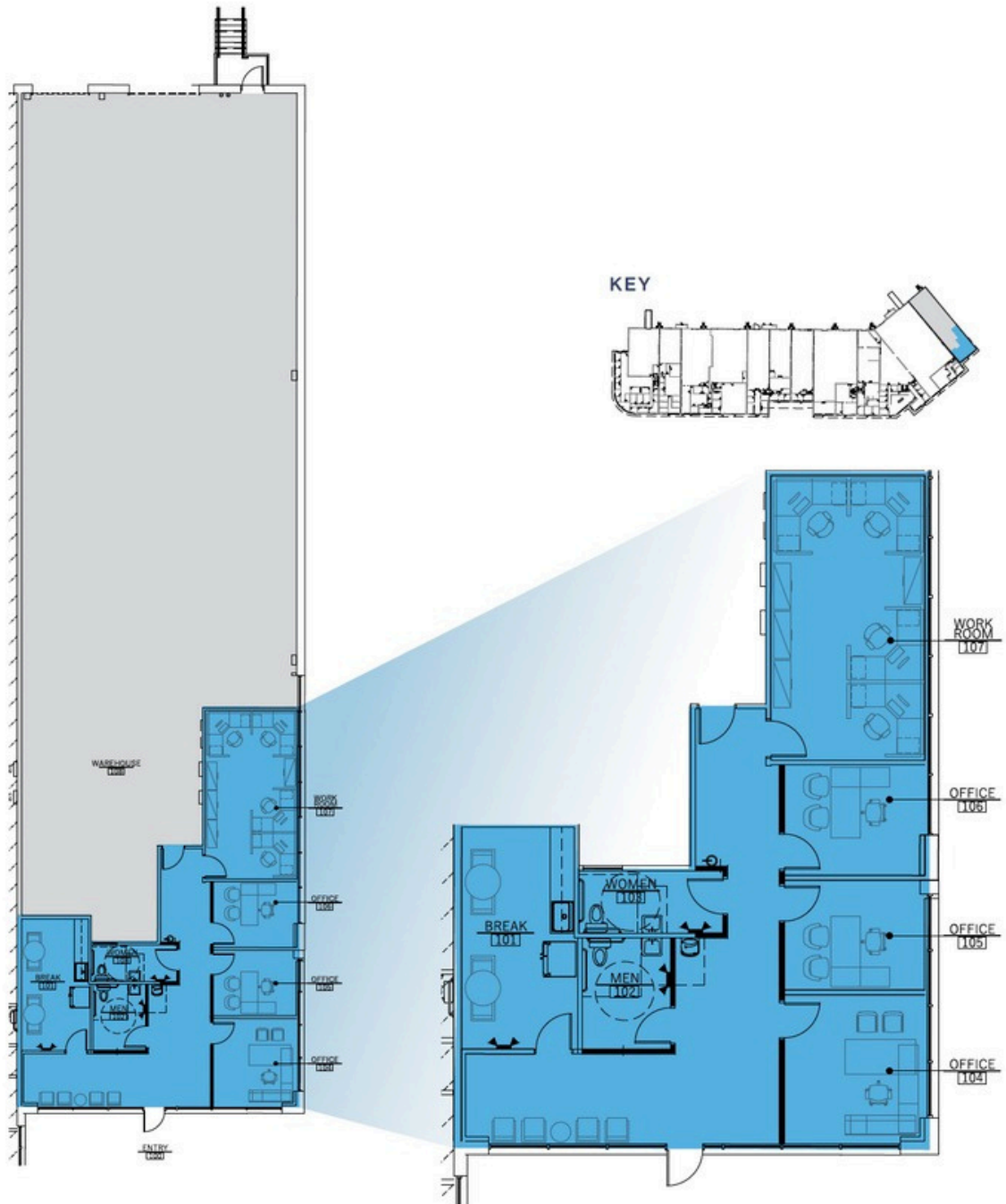
2395 Pleasantdale Road
Suite 1 | Doraville, GA 30340

OWNED BY:



CenterSquare

FLOOR PLAN



For more information, please contact:

RYAN BLACKBURN
Office: (404) 974 - 2716
Cell: (404) 821 - 7715
rblackburn@apexindustrialre.com

EVAN ARNOLD
Office: (404) 595 - 1524
Cell: (770) 658 - 4319
earnold@apexindustrialre.com

KELLIE SMITH
Office: (404) 594 - 8228
Cell: (404) 833 - 0955
ksmith@apexindustrialre.com



Although the information contained therein was provided from sources believed to be reliable, Apex Industrial makes no representation, expressed or implied, as to its accuracy and said information is subject to errors, omissions or changes.