

Leased & Managed By:



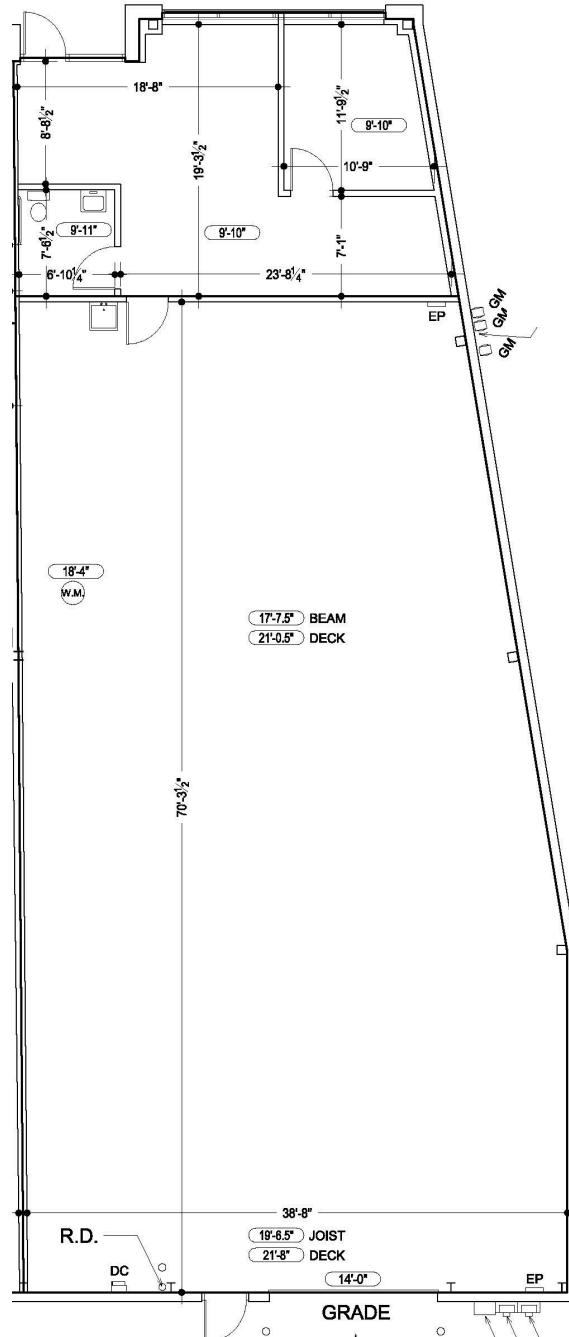
HURON COMMERCE CENTER

17901 Woodland Drive, #100
New Boston, MI 48164

Location Map



3,167 SF AVAILABLE
575 SF Office | 2,592 SF Warehouse



www.ari-el.com



29355 Northwestern Hwy., Suite 301, Southfield, MI 48034



248-557-3800