



## Commencement Bay Medical Building

3716 Pacific Avenue South, Tacoma, WA 98418

Commencement Bay Medical Building offers a convenient location on Pacific Avenue just off 38th St. in Tacoma. The building is centrally situated for easy access to SR-7, I-705, SR-16, I-5, and downtown Tacoma. There is ample lighted parking in both the front and the upper lots, and the office suites are handicap accessible.

There are two suites available for lease. Suite B is 1,200sf with three private offices, a waiting room with a medical window into a receptionist's office and a restroom. Suite E will be available June 1, 2025, and is 1,472sf of medical office space featuring a spacious waiting room with a medical window into a receptionist's office, five exam rooms, a medical provider's office, a storage room, and a restroom. (Please do not disturb tenants, but do call broker to arrange a tour.)

### Overview

- Suite B of 1,200sf professional office
- Suite E of 1,472sf medical office
- Ample parking
- Easy access to freeways
- Asking lease rate: \$20/sf/yr MG

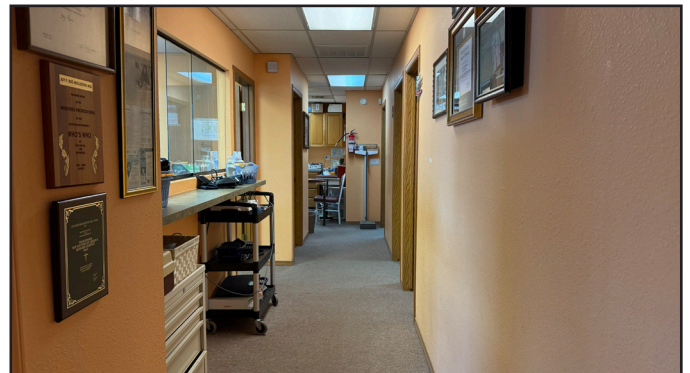
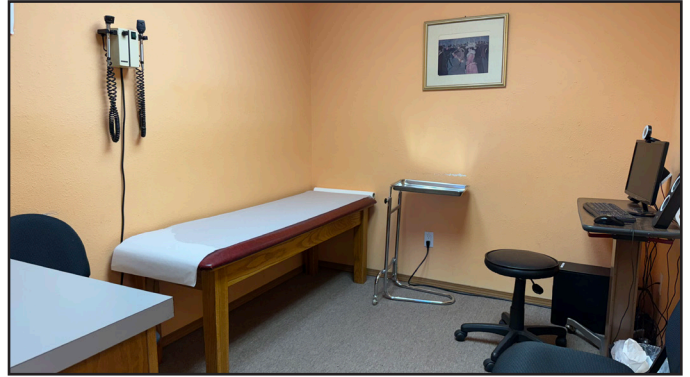
DISCLAIMER: The above information has been secured from sources believed to be reliable, however, no representations are made to its accuracy. Prospective tenants or buyers should consult their professional advisors and conduct their own independent investigation. Properties are subject to change in price and/or availability without notice.



11120 Gravelly Lake Dr SW Ste 2  
Lakewood, Washington 98499  
johnson-commercial.com

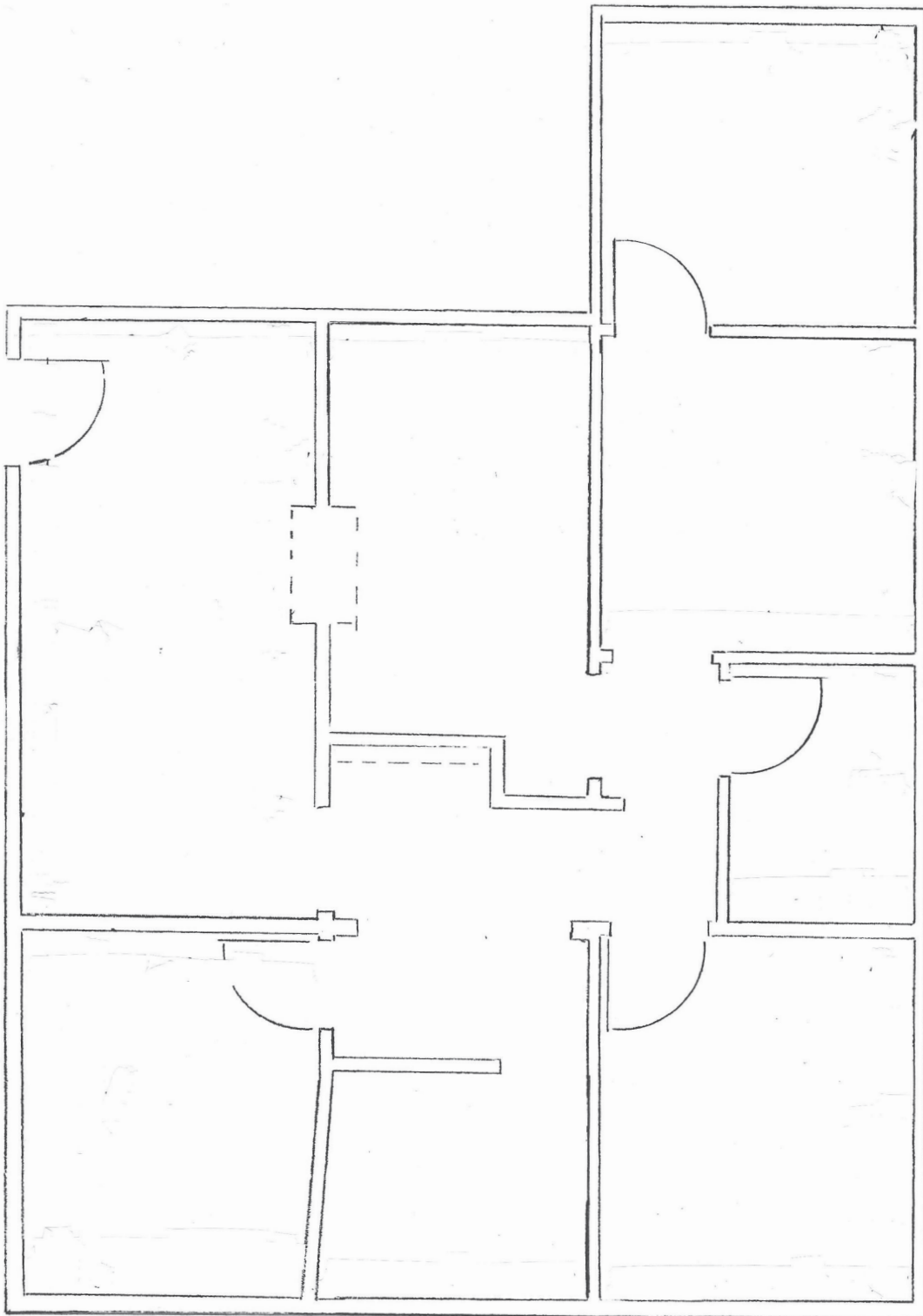
**Tim Johnson**  
timothy@johnson-commercial.com  
(253) 209-9999

**Margot Johnson**  
margot@johnson-commercial.com  
(253) 209-9998





## FLOOR PLAN *Suite B*



11120 Gravelly Lake Dr SW Ste 2  
Lakewood, Washington 98499  
johnson-commercial.com

**Tim Johnson**

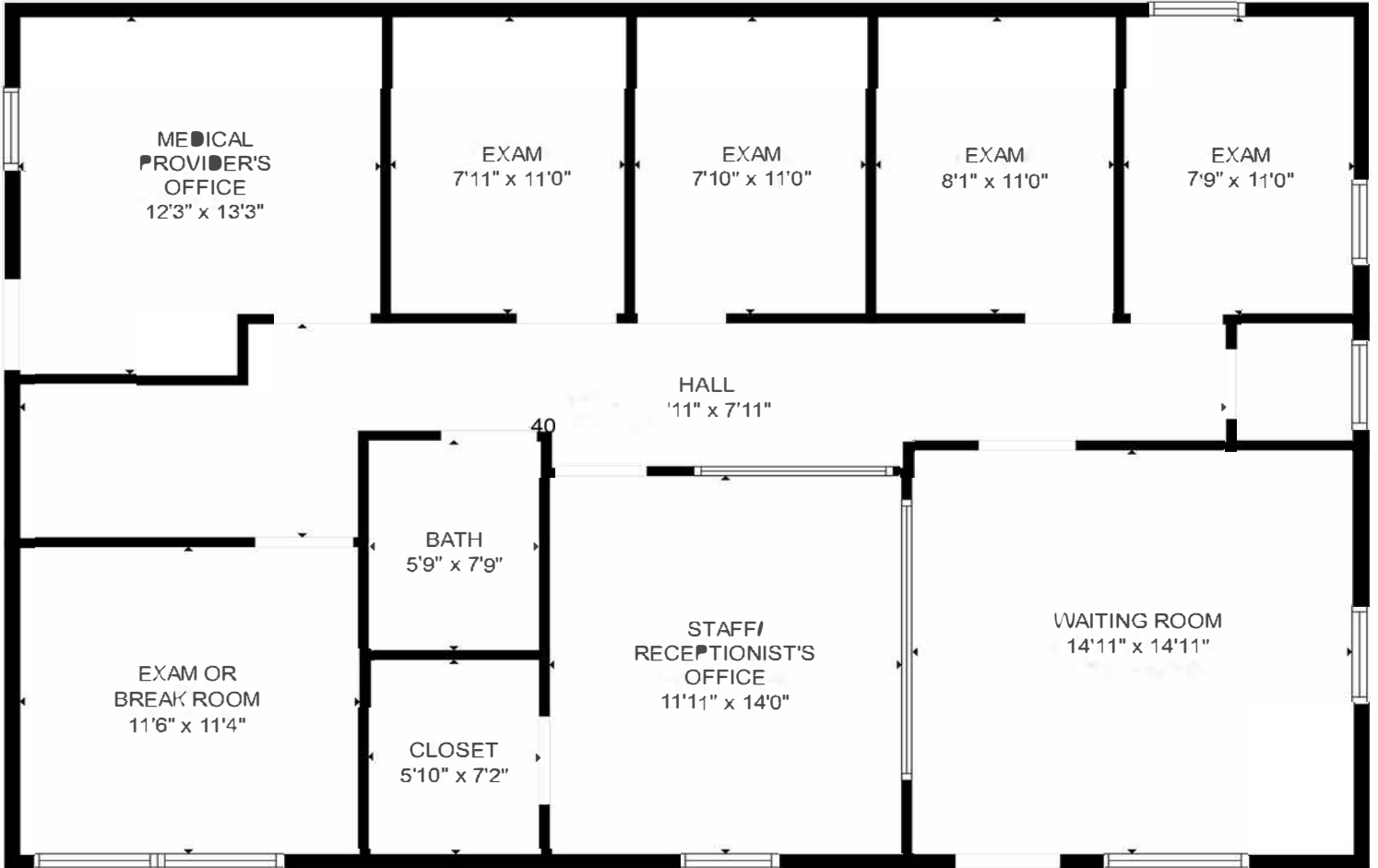
timothy@johnson-commercial.com  
(253) 209-9999

**Margot Johnson**

margot@johnson-commercial.com  
(253) 209-9998



## FLOOR PLAN Suite E



FLOOR PLAN CREATED BY CUBICASA APR. MEASUREMENTS DEEMED HIGHLY RELIABLE BUT NOT GUARANTEED.



11120 Gravelly Lake Dr SW Ste 2  
Lakewood, Washington 98499  
johnson-commercial.com

**Tim Johnson**  
timothy@johnson-commercial.com  
(253) 209-9999

**Margot Johnson**  
margot@johnson-commercial.com  
(253) 209-9998



## AREA MAP



11120 Gravelly Lake Dr SW Ste 2  
Lakewood, Washington 98499  
johnson-commercial.com

**Tim Johnson**  
timothy@johnson-commercial.com  
(253) 209-9999

**Margot Johnson**  
margot@johnson-commercial.com  
(253) 209-9998