

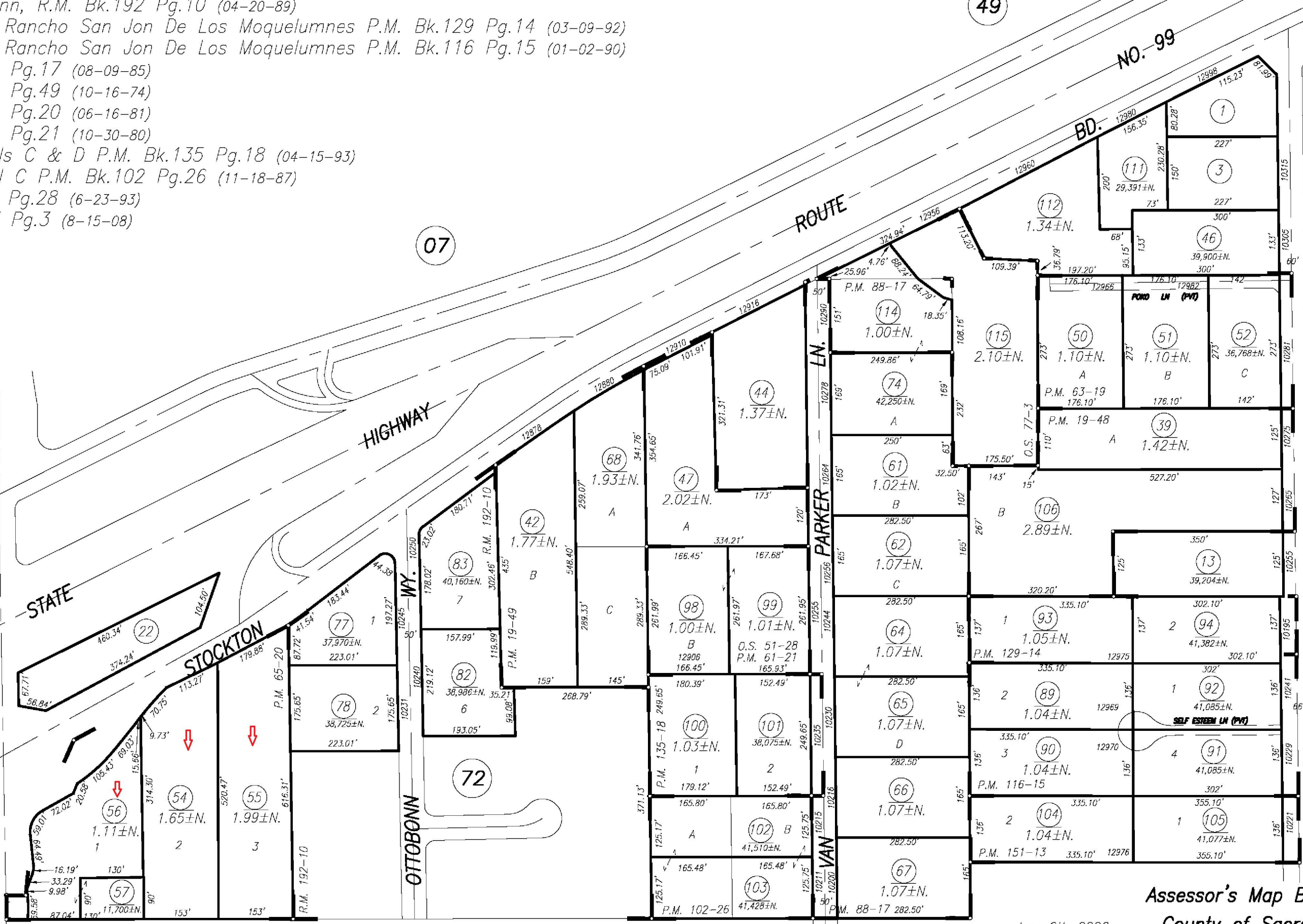
DISCLAIMER: ASSESSORS PARCELS ARE FOR TAX ASSESSMENT PURPOSES ONLY AND DO NOT INDICATE EITHER PARCEL LEGALITY OR A VALID BUILDING SITE. THE COUNTY OF SACRAMENTO ASSUMES NO RESPONSIBILITY ARISING FROM USE OF THIS INFORMATION.

POR. SEC. 15, T.5N., R.6E., M.D.B.& M.

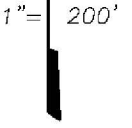
The Ottobonn, R.M. Bk.192 Pg.10 (04-20-89)  
Portion of Rancho San Jon De Los Moquelumnes P.M. Bk.129 Pg.14 (03-09-92)  
Portion of Rancho San Jon De Los Moquelumnes P.M. Bk.116 Pg.15 (01-02-90)  
P.M. Bk.88 Pg.17 (08-09-85)  
P.M. Bk.19 Pg.49 (10-16-74)  
P.M. Bk.65 Pg.20 (06-16-81)  
P.M. Bk.61 Pg.21 (10-30-80)  
Por. Parcels C & D P.M. Bk.135 Pg.18 (04-15-93)  
Por. Parcel C P.M. Bk.102 Pg.26 (11-18-87)  
O.S. Bk.51 Pg.28 (6-23-93)  
O.S. Bk.77 Pg.3 (8-15-08)

04  
TWIN CITIES RD.

24



07



Jun. 9th 2020