

Caxton Way, Thetford, IP24 3RY

£325,000 p.acre (ex VAT)



- c.8 acre site
- Levelled, ready for development
- All services present to edge of site
- Up to 1000 KVA power available
- Full planning permission granted
- Located in SW corner of Thetford
- 12 miles to J43 / A14
- Established industrial estate

Agent's View

For sale are c.8 acres of prepared development land with full planning permission for a B8 warehouse unit of 150,000 sq.ft. The location allows (bottom SW corner of Thetford) speedy access to the region's major roads. Alternative uses are plausible (such as open storage) but subject to planning.





Site

- c.8 acres
- Level and broadly rectangular
- Mature trees provide natural border between site and residential areas to north and east
- Good access onto Caxton Way and then onto London Road and to dualled A11.

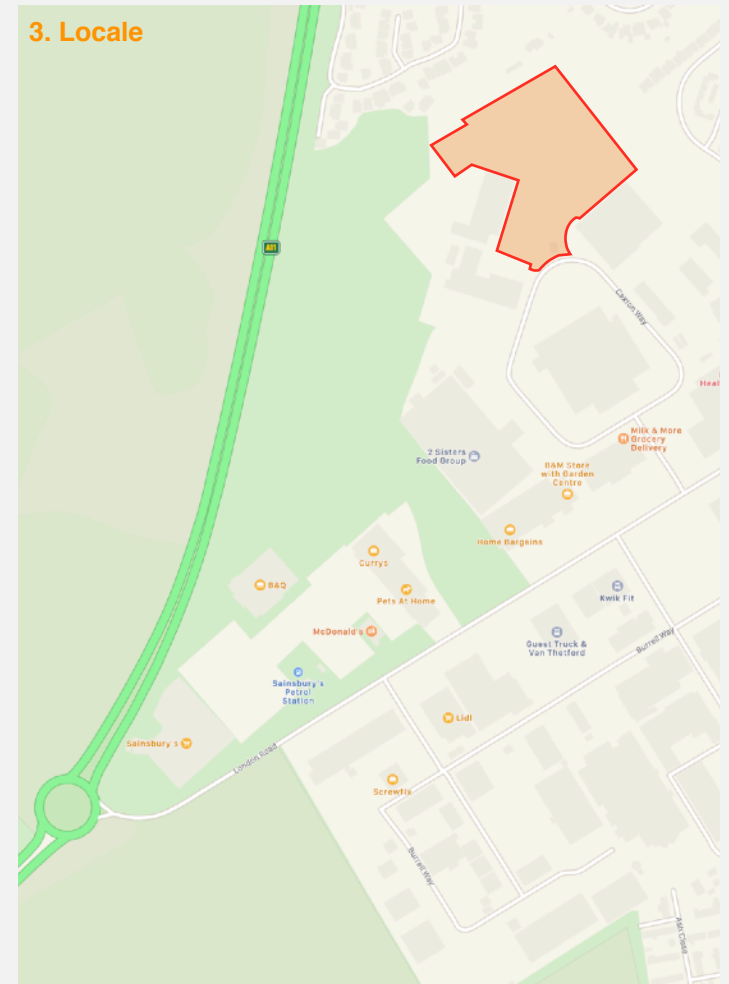
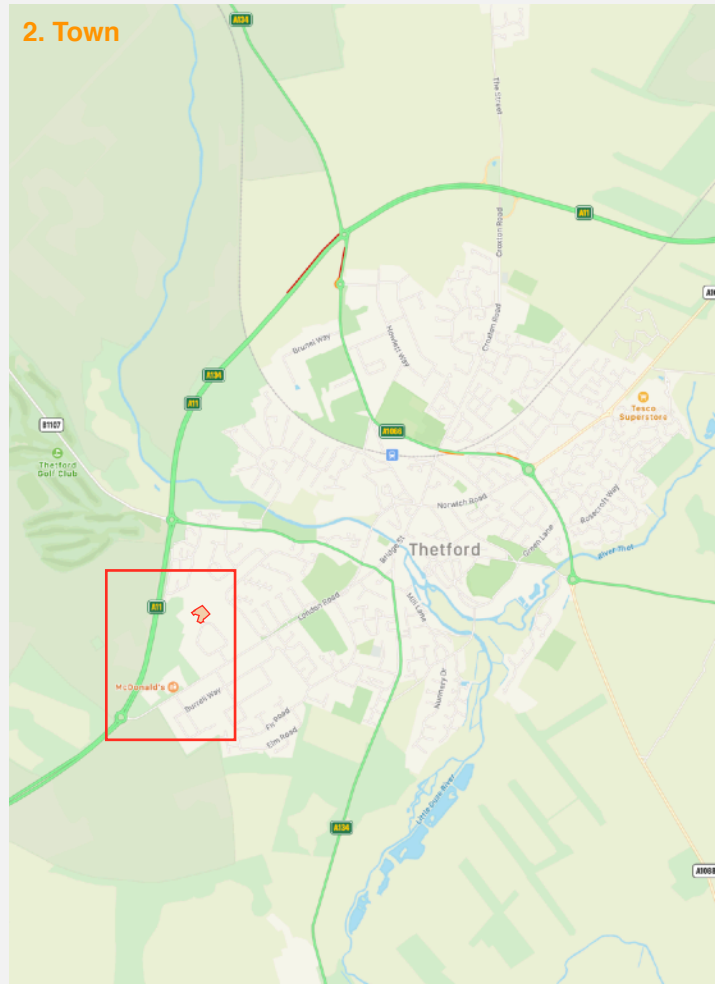
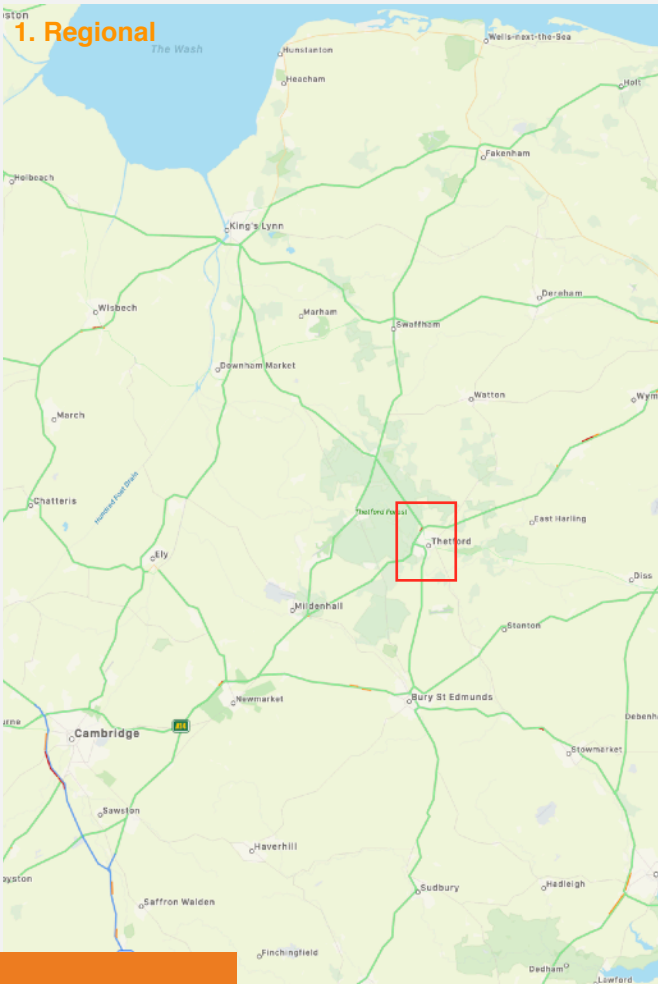
Permission

- Outline planning permission was originally granted in December 2017 via application number 3PL/2017/0840/O.
- **Full planning permission** has since been granted via application no. 3PL/2021/0172/D in March 2021 for **150,000 sq.ft.** of B8 warehouse space with **18m eaves**.
- Site is permitted for B1 and B2 uses.

Specification

- Warehouse c.143,000 sq.ft.
- Offices c.6,000 sq.ft.
- 45m service yard
- 18m to eaves height
- 23 loading doors
- 11 dock loaders
- 116 car parking spots + 5 motorbike spots





Location

01536 560 400

Contact Richard Potter or Marcus Learoyd

www.plcommercial.co.uk

info@plcommercial.co.uk

Misrepresentation Act: Potter Learoyd Commercial trading for themselves and for their vendors or lessors of this property whose agents they are, give notice that: (1) these particulars are set out as a general outline only, for the guidance of prospective purchasers or lessees and do not constitute the whole or any part of an offer or contracts; (2) all descriptions, dimensions, references to conditions, necessary permissions for use and occupation and other details contained therein are given without responsibility and prospective purchasers or lessees must not rely on them as statements or representations of fact and must satisfy themselves by inspection or otherwise as to their accuracy; (3) no employee of Potter Learoyd Commercial has any authority to make or give any representation or warranty or enter into any contract whatever the relation to the property; (4) rents or prices quoted in these particulars may be subject to VAT in addition.

potter learoyd
COMMERCIAL