



All Health Services PC

PRIMARY CARE • PAIN MANAGEMENT • PSYCHIATRY • MENTAL HEALTH COUNSELING

ULTRASOUND • X-RAYS • JOINT INJECTIONS

PATERSONCARE@GMAIL.COM

Tel: 973-435-6666

680 Broadway, Paterson, NJ 07514

FOR MORE INFORMATION, PLEASE CONTACT EXCLUSIVE BROKER:

Urszula Zoltek

C: 973.896.8377

D: 862.217.5610

Urszula@ZoltekCRE.com

ZOLTEK
COMMERCIAL REAL ESTATE SERVICES

AVAILABLE FOR SALE

- 7,500 SF Medical Condo Available for Purchase (Former Barnert Hospital)
- Built Out as a Hospital Emergency Room
- Fully Approved for all Specialties, Including Outpatient-Based Surgical Procedures (OBL)
- Excellent Space Use for Urgent Care & Mental Health Clinic
- Existing Medical and Office Furniture Included
- Ample Patient Parking & Private Doctor/Staff Parking Available
- Access to Route 80, Garden State Parkway & Routes 4, 20, 208 & 46
- Traffic Count on Broadway & East 32nd Street : 26,615 VPD
- Zoning H-1: Hospital – [Click Here for More Information](#)
- Neighboring National Tenants: McDonalds, Taco Bell, Dunkin', Wing Stop, KFC, Burger King, 7-ELEVEN, Walgreens, PNC Bank, BP Gas Station, Shell Gas and Many More...

FOR MORE INFORMATION, PLEASE CONTACT EXCLUSIVE BROKER:

Urszula Zoltek

C: 973.896.8377

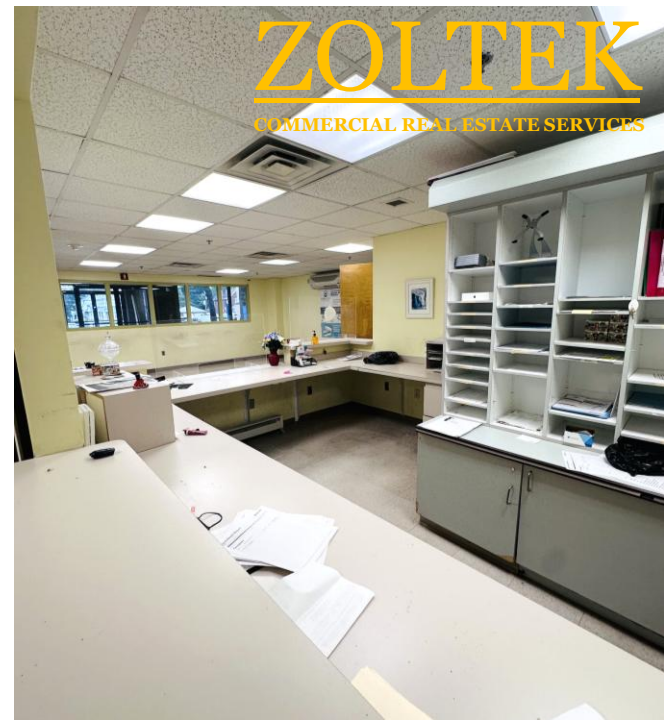
D: 862.217.5610

Urszula@ZoltekCRE.com

ZOLTEK

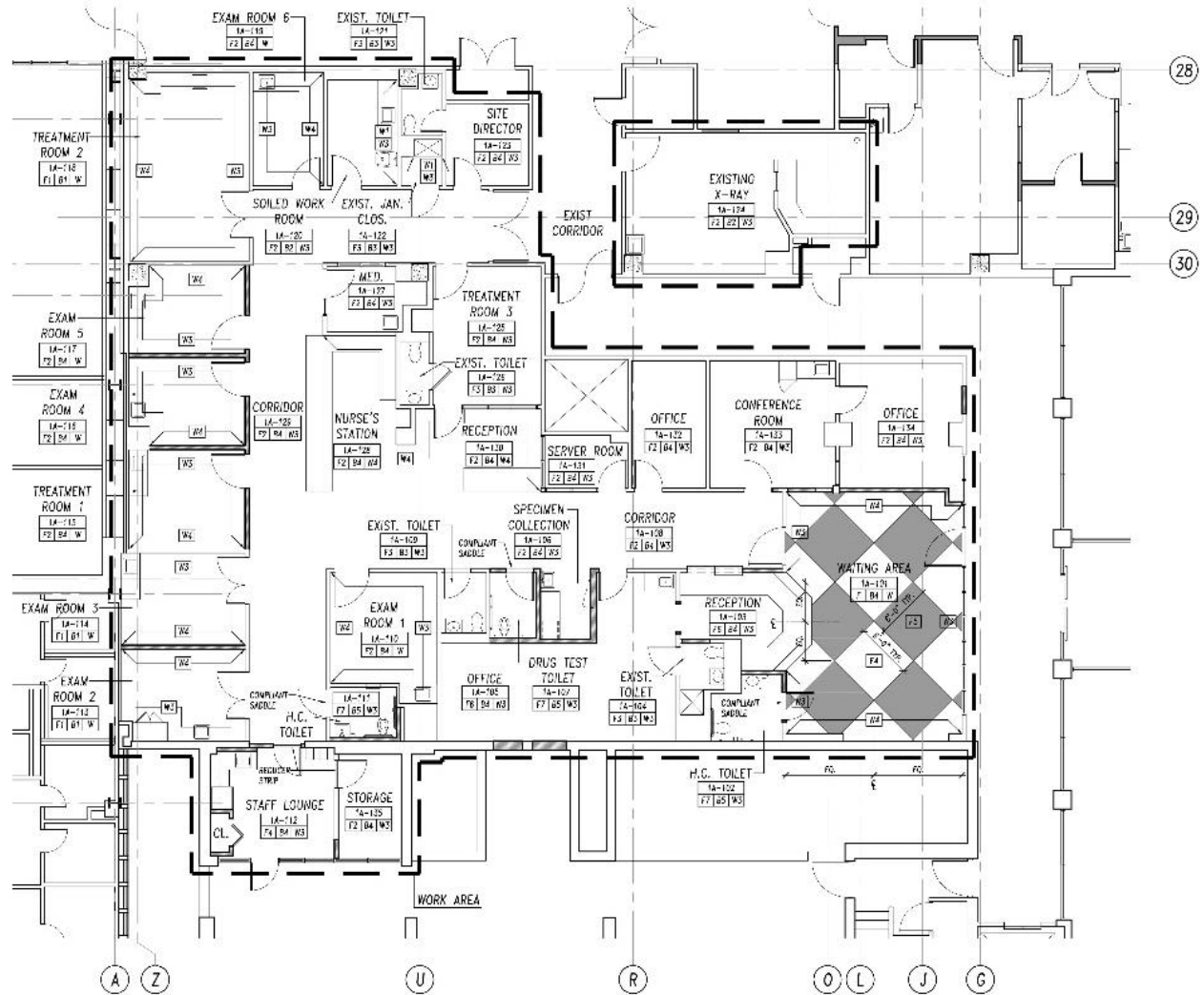
COMMERCIAL REAL ESTATE SERVICES

ZOLTEK COMMERCIAL REAL ESTATE SERVICES- Licensed Real Estate Broker – 15 Furler Street, Totowa, NJ 07512 * T: 973.798.6130



ZOLTEK
COMMERCIAL REAL ESTATE SERVICES





1 FINISH PLAN
A102 SCALE: 1/8" = 1'-0"

FLOOR PLAN



SANDY HILL

PATERSON PUBLIC SCHOOL 15

FAITH CHAPEL REFORMED CHURCH

ROSA L. PARKS ART SCHOOL

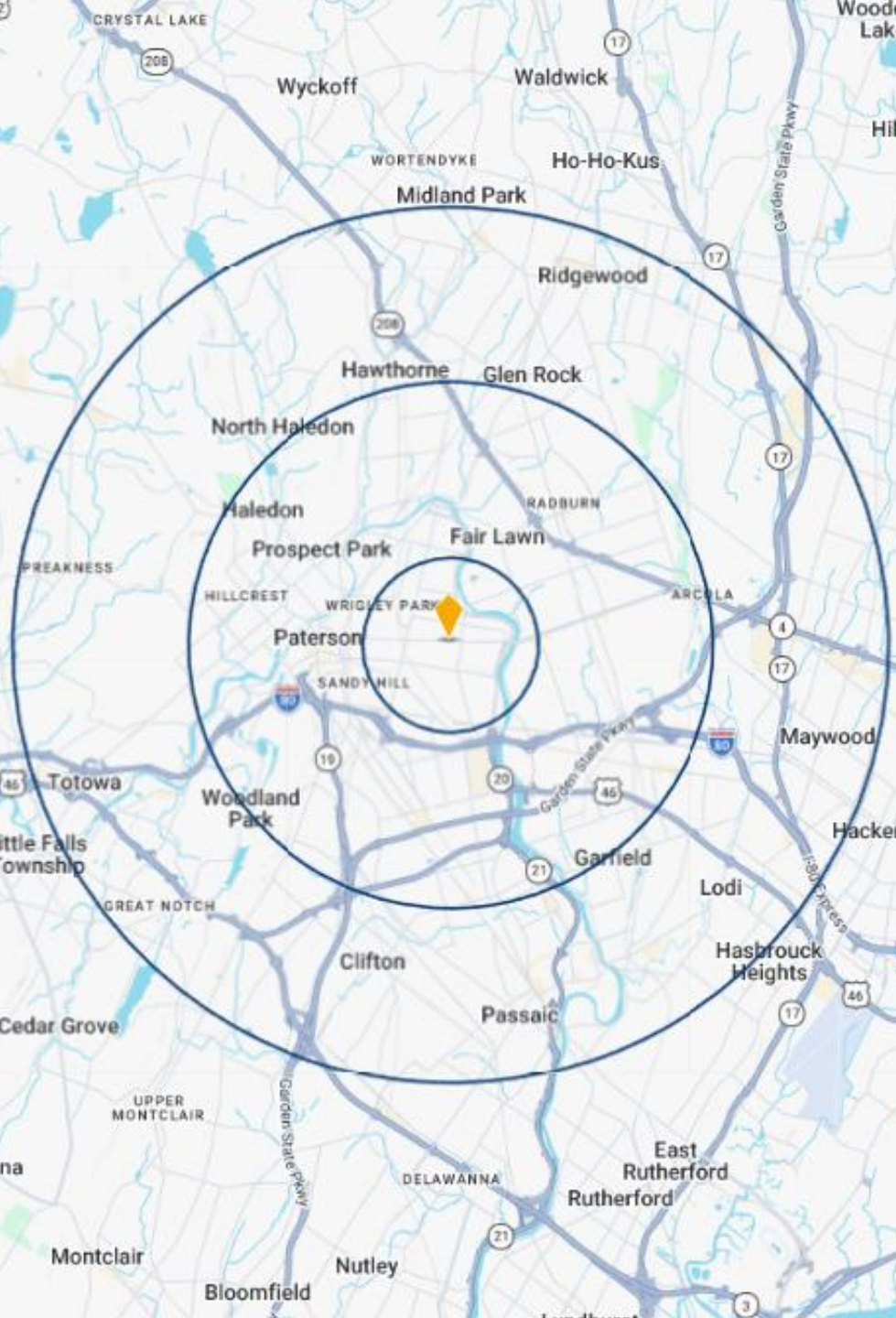
680 Broadway

EASTSIDE

SITE

PATERSON RECREATION

EAST SIDE PARK HISTORIC DISTRICT



DEMOGRAPHICS	<i>1 Mile</i>	<i>3 Miles</i>	<i>5 Miles</i>
Population	58,234	290,064	594,871
Daytime Population	10,164	99,476	226,333
Households	18,428	96,165	201,701
Median Age	36.4	38.1	39.1
Average HH Income	\$83,908	\$102,105	\$114,504

FOR MORE INFORMATION, PLEASE CONTACT EXCLUSIVE BROKER:

Urszula Zoltek

C: 973.896.8377

D: 862.217.5610

Urszula@ZoltekCRE.com

ZOLTEK

COMMERCIAL REAL ESTATE SERVICES

ZOLTEK COMMERCIAL REAL ESTATE SERVICES- Licensed Real Estate Broker - 15 Furler Street, Totowa, NJ 07512 * T: 973.798.6130
WWW.ZOLTEKCRE.COM ALTHOUGH ALL THE INFORMATION REGARDING PROPERTY FOR SALE, RENTAL OR FINANCING IS FROM SOURCES DEEMED RELIABLE SUCH INFORMATION HAS NOT BEEN VERIFIED, AND NO EXPRESS REPRESENTATION IS MADE NOR IS ANY TO BE IMPLIED AS TO THE ACCURACY THEREOF, AND IT IS SUBMITTED SUBJECT TO ERRORS, OMISSIONS, CHANGE OF PRICE, RENTAL OR OTHER CONDITIONS, PRIOR SALE, LEASE OR FINANCING, OR WITHDRAWAL WITHOUT NOTICE