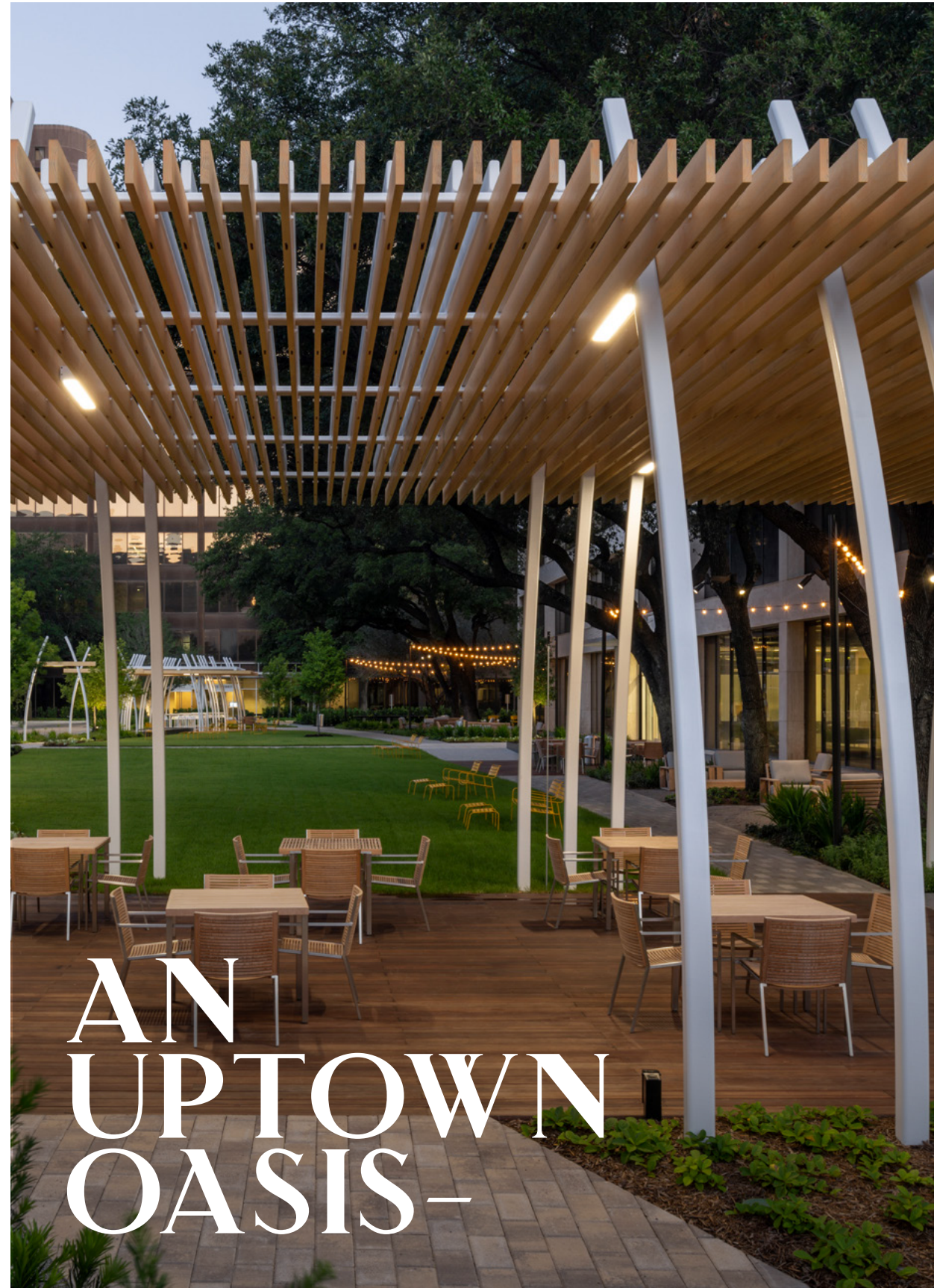


5251 & 5333 WESTHEIMER
HOUSTON · TEXAS

GALLERIA PARK

GALLERIAPARKOFFICES.COM



AN UPTOWN OASIS—

— IN THE HEART OF THE GALLERIA

Galleria Park is where work and life come together to create one of Houston's most unique workplace environments. Boasting two, newly renovated Class-A office towers, a stunning, one-acre grand lawn and convenient, on-site retail, all on one sprawling corporate campus, Galleria Park is designed to further enhance Uptown's vibrant and highly-amenitized experience.

\$15M renovation completed in 2018

Unobstructed city views with floor to ceiling windows

On-site management and 24-hour security

Secure landlord committed to ongoing capital improvements

Underground garage access with 3.5/1,000 SF parking

Monument and building signage opportunities available

Unbeatable walking access to hundreds of shops, restaurants and hotels around the Galleria.

Quick access to I-610 and I-69 and other major roadways





In a campus packed with modern, class-A business amenities, the stunning, one-acre grand lawn presents Galleria Park's most distinct offering, to promote work and wellness outside the walls of the office.

One acre of sprawling native landscaping with live oaks and rich, green grass

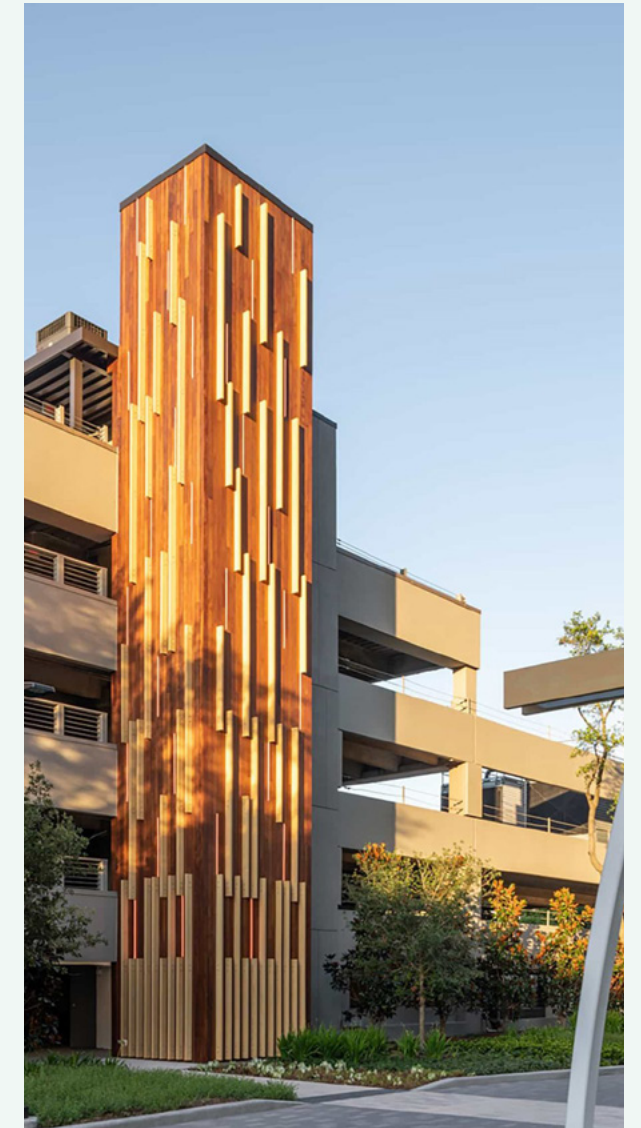
WiFi-enabled promenades and pavilions

10,000 SF of recreation and event space

Ground-level retail and restaurants with patio seating

Outdoor activities include ping pong tables and cornhole

Sculptural exterior garage elevator clad in wood and staggered LED lighting





STK Steakhouse



Sushi Hachi

ENHANCE YOUR EXPERIENCE

From your morning workout to 5 PM happy hour and everything in between, Galleria Park has the spaces and amenities designed to fuel every hour of your day.

New luxury, 2,000 SF conference facility, with boardroom and classroom style seating

Pre-function/tenant lounge with upscale seating

State-of-the-art fitness center with free weights and cardio machines

Spa-quality, full-service locker rooms

P.F. Chang's located in Galleria Park I with outdoor covered patio

The addition of two new, delicious, on-site dining amenities: STK STEAKHOUSE and SUSHI HACHI



Sushi Hachi



MOVE-IN READY SPACES

Galleria Park offers a variety of hassle-free and cost-effective move-in ready workspaces starting at 2,100 SF, fully furnished with modern finishes and collaboration equipment, so you can hit the ground running.

MOVE-IN READY
SPEC SUITES RANGING FROM
2,147 – 11,667 RSF

CUSTOM DESIGNED WITH
ELEVATED FINISHES
AND **LIGHTING**

UP TO **97,950** SF
CONTIGUOUS SPACE AVAILABLE
IN **GALLERIA PARK I**

UP TO **64,762** SF
CONTIGUOUS SPACE AVAILABLE
IN **GALLERIA PARK II**





ACCELERATED ACCESS

Galleria Park's convenient Westheimer location puts tenants less than a mile from the 610 Loop and just minutes from a host of popular neighborhoods and destinations all around Houston.

1 MINUTE
WALK TO THE GALLERIA

3 MINUTE
DRIVE TO BLVD PLACE

3 MINUTE
DRIVE TO UPTOWN PARK

5 MINUTE
DRIVE TO RIVER OAKS DISTRICT

10 MINUTE
DRIVE TO MEMORIAL PARK



A WALKABLE UPTOWN EXPERIENCE

Galleria Park provides unbeatable, walkable access to Houston's premier shopping district. With more than 700 retailers, fine dining restaurants, and hotels within two square miles, including the Houston Galleria, tenants are free to explore the endless food, retail and entertainment that sit just steps away.

WALK SCORE: 80 **40+ HOTELS**
104+ RESTAURANTS **28+ RETAIL**

RETAIL

- 1 The Galleria
- 2 Edwin Watts Golf
- 3 Arhaus
- 4 Ethan Allen
- 5 Nordstrom Rack
- 6 The Container Store
- 7 Burberry
- 8 Versace
- 9 Ralph Lauren
- 10 Chico's
- 11 Cole Haan
- 12 Club Monaco
- 13 Buckle
- 14 Michael Kors
- 15 Ann Taylor
- 16 Zara
- 17 kate spade
- 18 Athleta
- 19 H&M
- 20 lululemon athletica
- 21 WHBM
- 22 Nordstrom Rack
- 23 Neiman Marcus
- 24 Dillard's
- 25 Saks Fifth Avenue
- 26 Macy's
- 27 Apple Store
- 28 Tiffany & Co.

RESTAURANTS

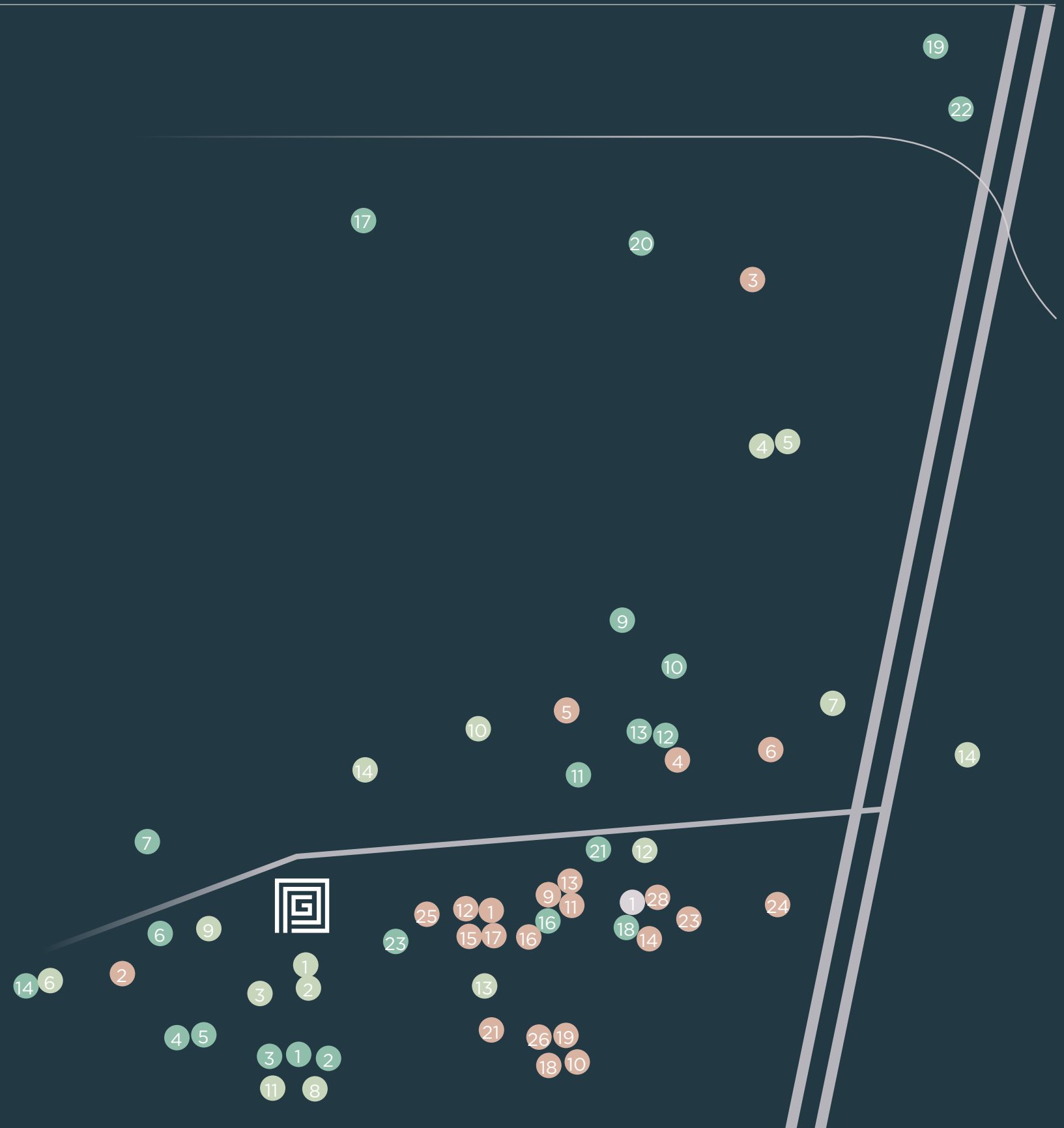
- 1 Sage 400
- 2 Casa Do Basil
- 3 The Burger Place
- 4 Hidden Omakase
- 5 Burger-Chan
- 6 The Capital Grille
- 7 Truluck's
- 8 Caracol
- 9 Moxie's
- 10 Grand Lux Café
- 11 Morton's
- 12 Snooze
- 13 Ruth's Chris
- 14 La Madeleine
- 15 Del Frisco's
- 16 Adair Kitchen
- 17 White Oak Kitchen
- 18 Bloom & Bee
- 19 North Italia
- 20 JOEY Uptown
- 21 Willy G's Seafood
- 22 51fifteen

HOTEL

- 1 Hyatt Regency
- 2 Hyatt Regency
- 3 Hyatt Place
- 4 Hilton International
- 5 Hilton Hotels & Resorts
- 6 Aloft Hotels
- 7 Tapestry Collection
- 8 Homewood Suites
- 9 DoubleTree
- 10 Residence Inn
- 11 Courtyard
- 12 Westin Hotels & Resorts
- 13 Westin Hotels & Resorts
- 14 JW Marriott
- 15 Hotel Derek

FITNESS

- 1 | Lifetime Fitness





FOR MORE INFORMATION, PLEASE CONTACT:

JILL NESLONEY

DIRECTOR

Direct: +1 832 699 3001

Mobile: +1 832 643 9585

Jill.Nesloney@cushwake.com

ROBERT LACOURE

SENIOR DIRECTOR

Direct: +1 832 919 8425

Mobile: +1 832 722 8476

Robert.LaCoure@cushwake.com

BRYCE ADAMS

ASSOCIATE

Direct: +1 832 919 8424

Office: +1 713 877 1700

Bryce.Adams@Cushwake.com



DHANANI
PRIVATE EQUITY GROUP



**GALLERIA
PARK**



**CUSHMAN &
WAKEFIELD**

©2024 Cushman & Wakefield. All rights reserved. The information contained in this communication is strictly confidential. This information has been obtained from sources believed to be reliable but has not been verified. NO WARRANTY OR REPRESENTATION, EXPRESS OR IMPLIED, IS MADE AS TO THE CONDITION OF THE PROPERTY (OR PROPERTIES) REFERENCED HEREIN OR AS TO THE ACCURACY OR COMPLETENESS OF THE INFORMATION CONTAINED HEREIN, AND SAME IS SUBMITTED SUBJECT TO ERRORS, OMISSIONS, CHANGE OF PRICE, RENTAL OR OTHER CONDITIONS, WITHDRAWAL WITHOUT NOTICE, AND TO ANY SPECIAL LISTING CONDITIONS IMPOSED BY THE PROPERTY OWNER(S). ANY PROJECTIONS, OPINIONS OR ESTIMATES ARE SUBJECT TO UNCERTAINTY AND DO NOT SIGNIFY CURRENT OR FUTURE PROPERTY PERFORMANCE.