

# NEWMARK

AVAILABLE FOR LEASE  
1000 WOODBURY ROAD, WOODBURY, NY



**NEW OWNERSHIP | ASKING RENT \$35.00 PSF**

## AVAILABLE SPACE

SUITE 120	4,600 RSF
SUITE 207/209	5,519 RSF
SUITE 214	16,000 RSF
SUITE 300/301/302	45,347 RSF
SUITE 301/302	5,797 RSF/7,338 RSF
SUITE 401	3,124 RSF
SUITE 403	14,341 RSF

## BUILDING AMENITIES

*Building Upgrades Coming in 2025*

- Full-Service Café
- Conferencing Center & Training Room
- Fitness Center
- On-site Management
- Proximate to LIE, Northern State Pkwy and Route 135 for easy access in all directions.

**FOR MORE INFORMATION, PLEASE CONTACT EXCLUSIVE BROKER:**

**Brian Lee**

*Principal/ Executive Managing Director*

O 631-673-0888; M 516-487-7770

[Brian.Lee@nrmk.com](mailto:Brian.Lee@nrmk.com)

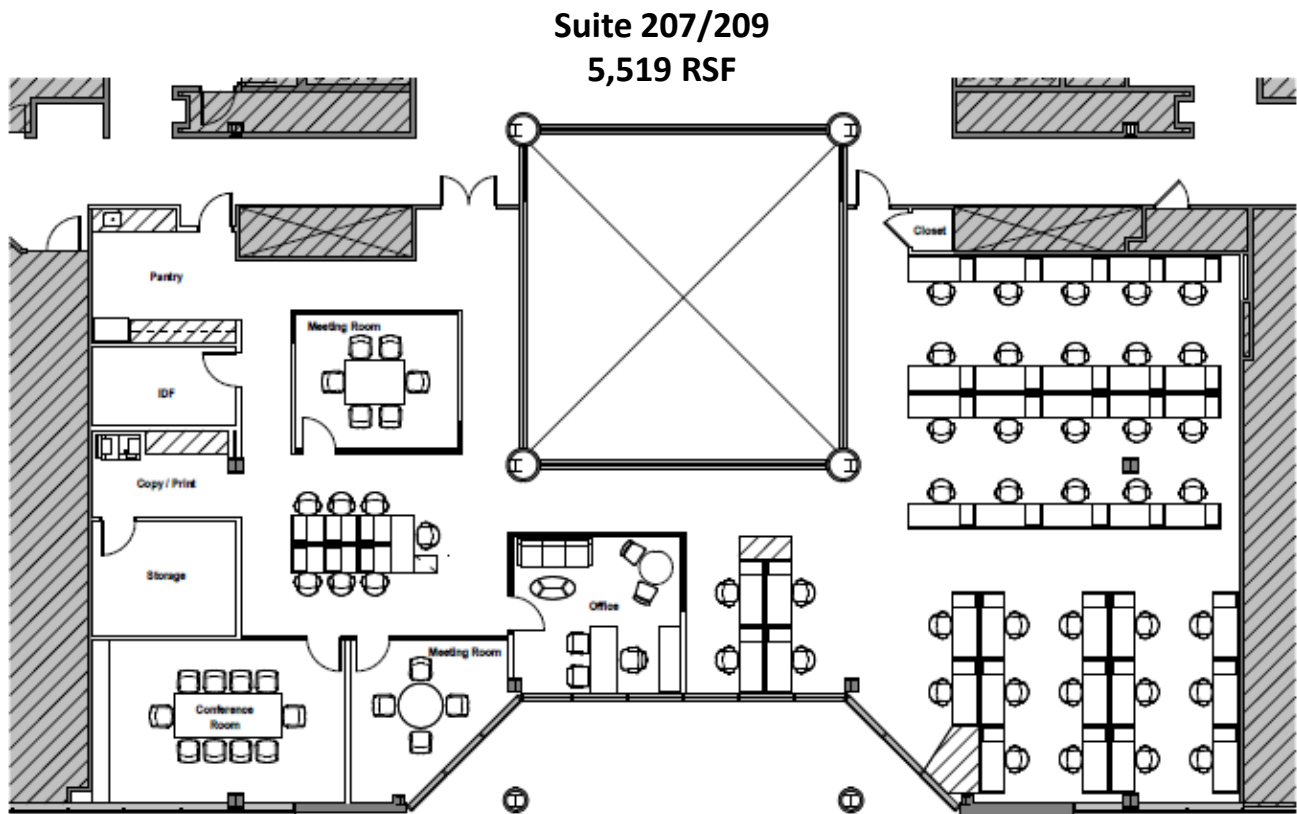
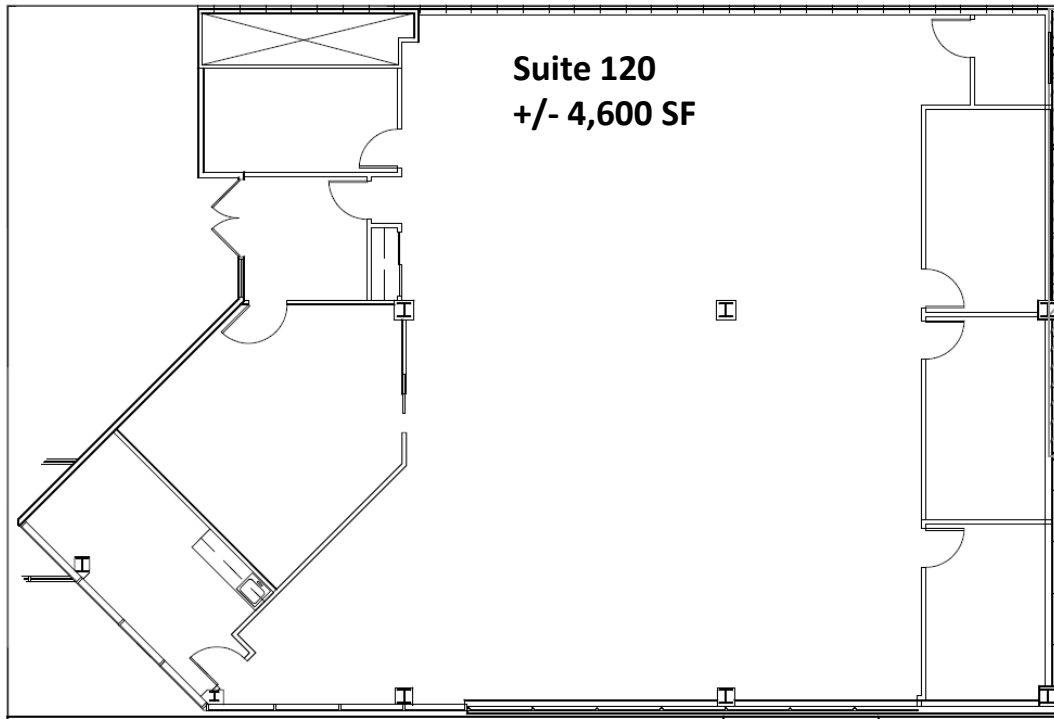
nrmk.com

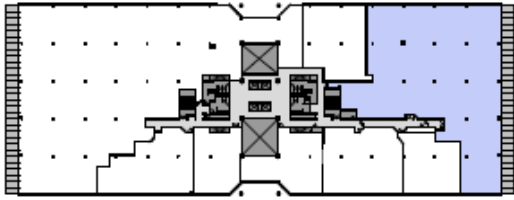
290 Broadhollow Road, Suite 103E, Melville, NY 11747



All information contained in this publication is derived from sources that are deemed to be reliable. However, Newmark has not verified any such information, and the same constitutes the statements and representations only of the source thereof, and not of Newmark. Any recipient of this publication should independently verify such information and all other information that may be material to any decision that recipient may make in response to this publication, and should consult with professionals of the recipient's choice with regard to all aspects of that decision, including its legal, financial, and tax aspects and implications. Any recipient of this publication may not, without the prior written approval of Newmark, distribute, disseminate, publish, transmit, copy, broadcast, upload, download, or in any other way reproduce this publication or any of the information it contains. This document is intended for informational purposes only and none of the content is intended to advise or otherwise recommend a specific strategy. It is not to be relied upon in any way to predict market movement, investment in securities, transactions, investment strategies or any other matter.  
©2020 Newmark. All Rights Reserved.

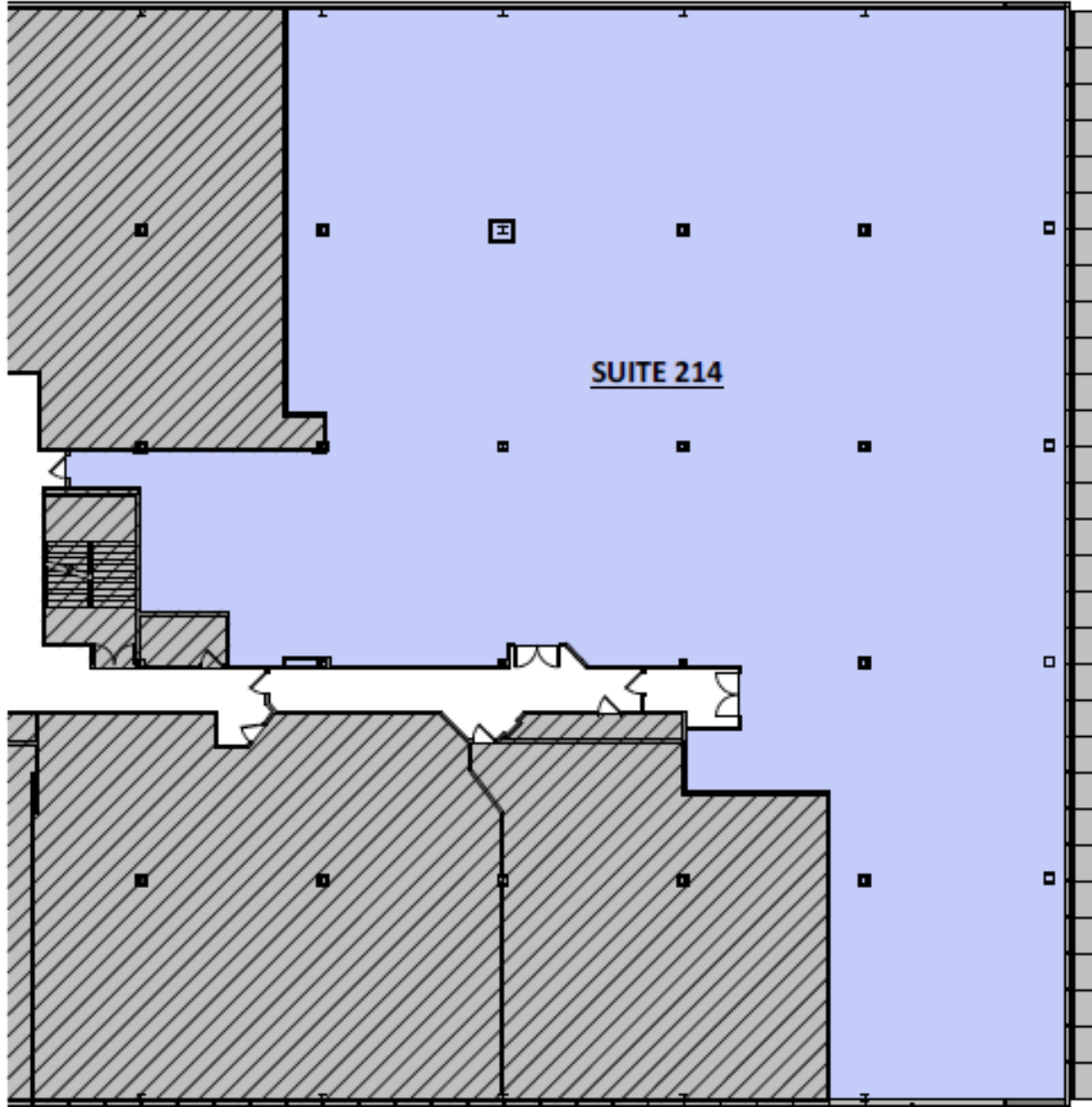
# NEWMARK





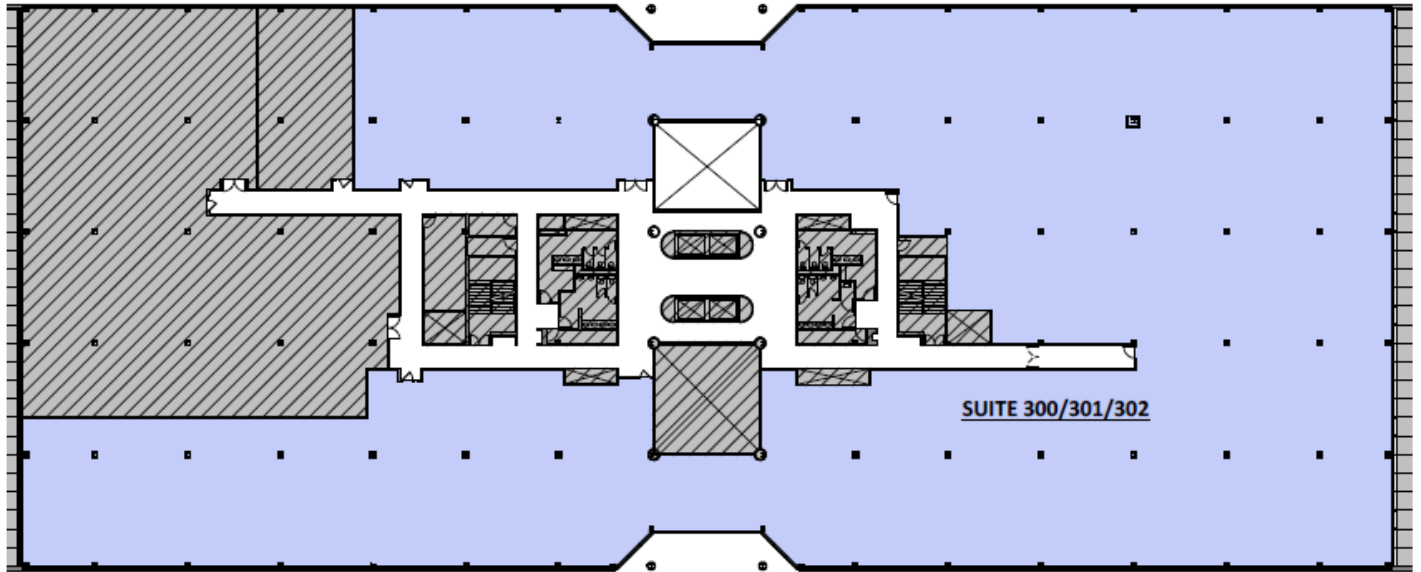
KEY PLAN

**Suite 214**  
**16,044 RSF**

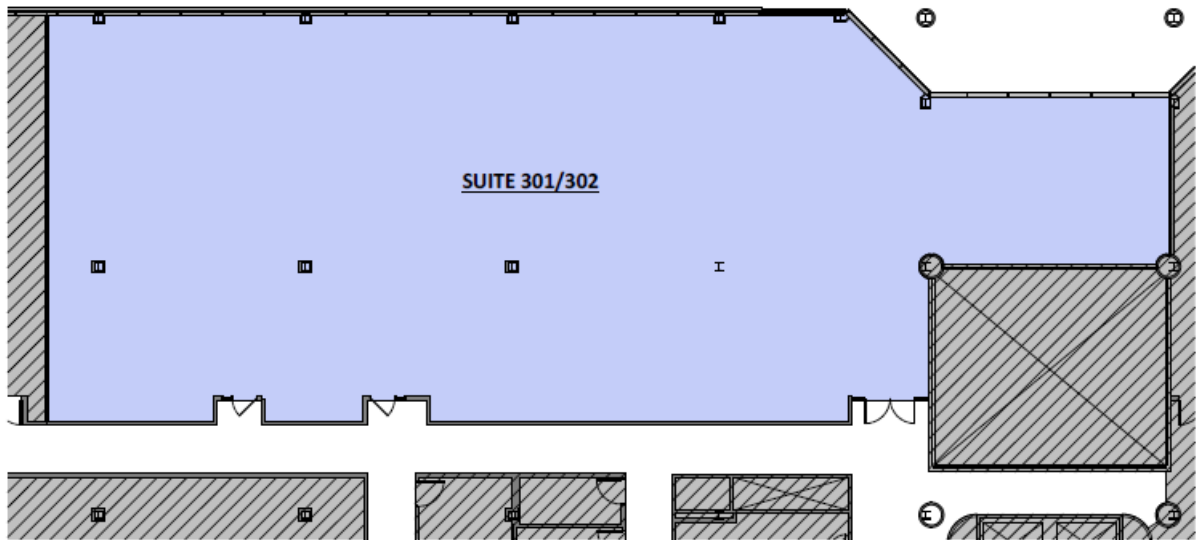


# NEWMARK

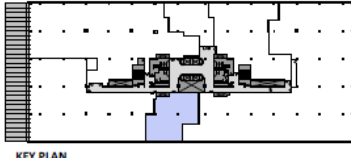
## Suite 300/301/302 45,347 RSF



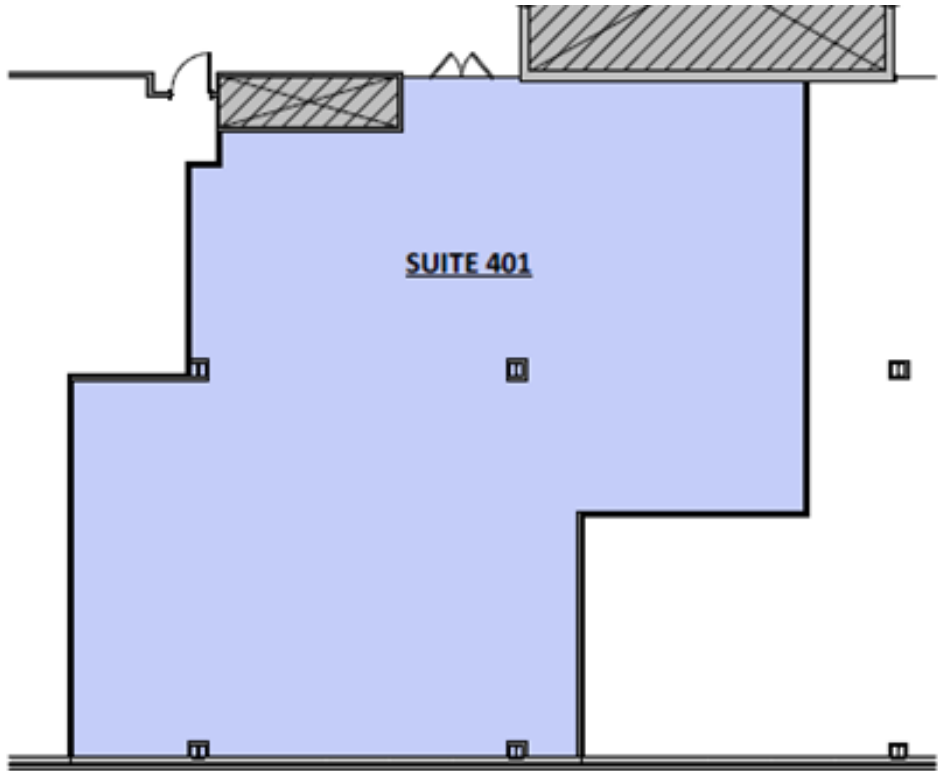
## Suite 301/302 5,797 RSF / 7,338 RSF



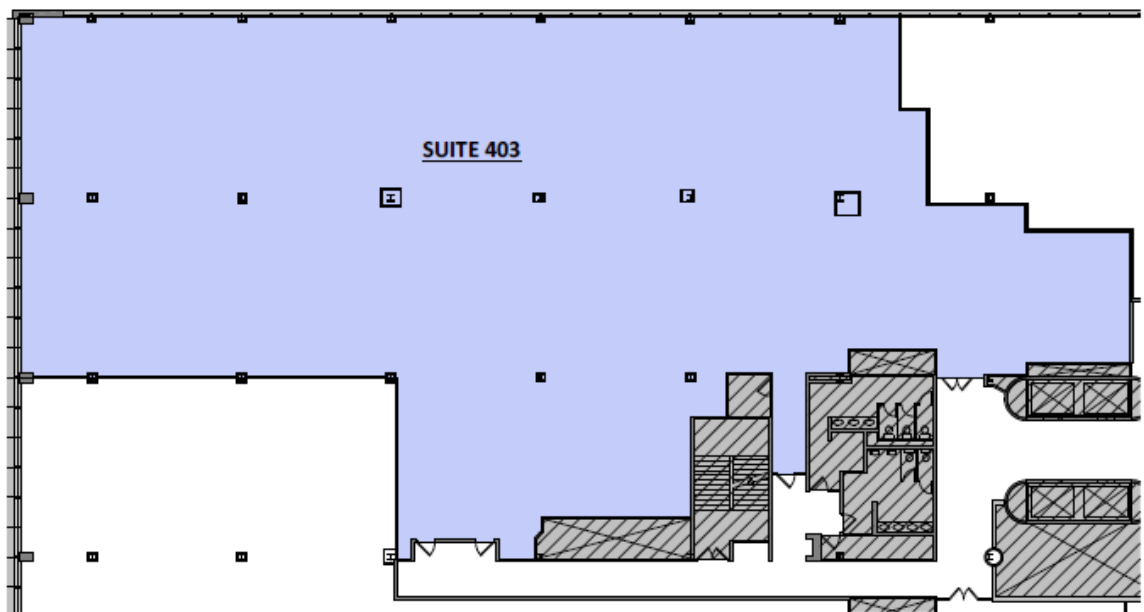
# NEWMARK



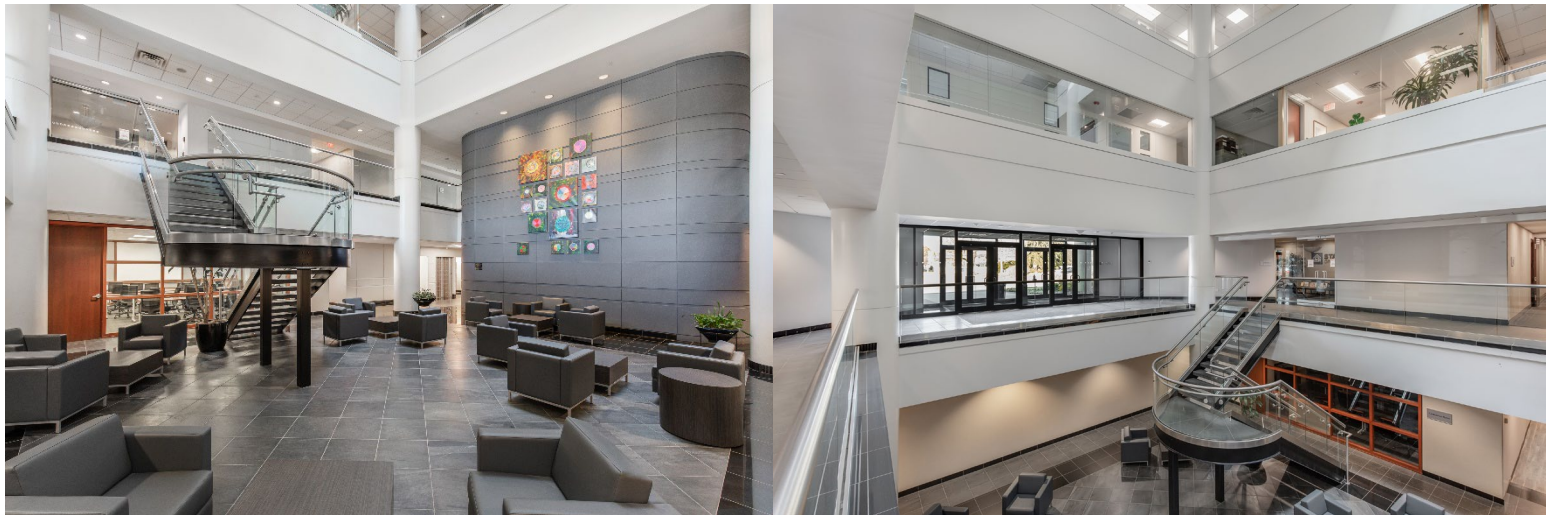
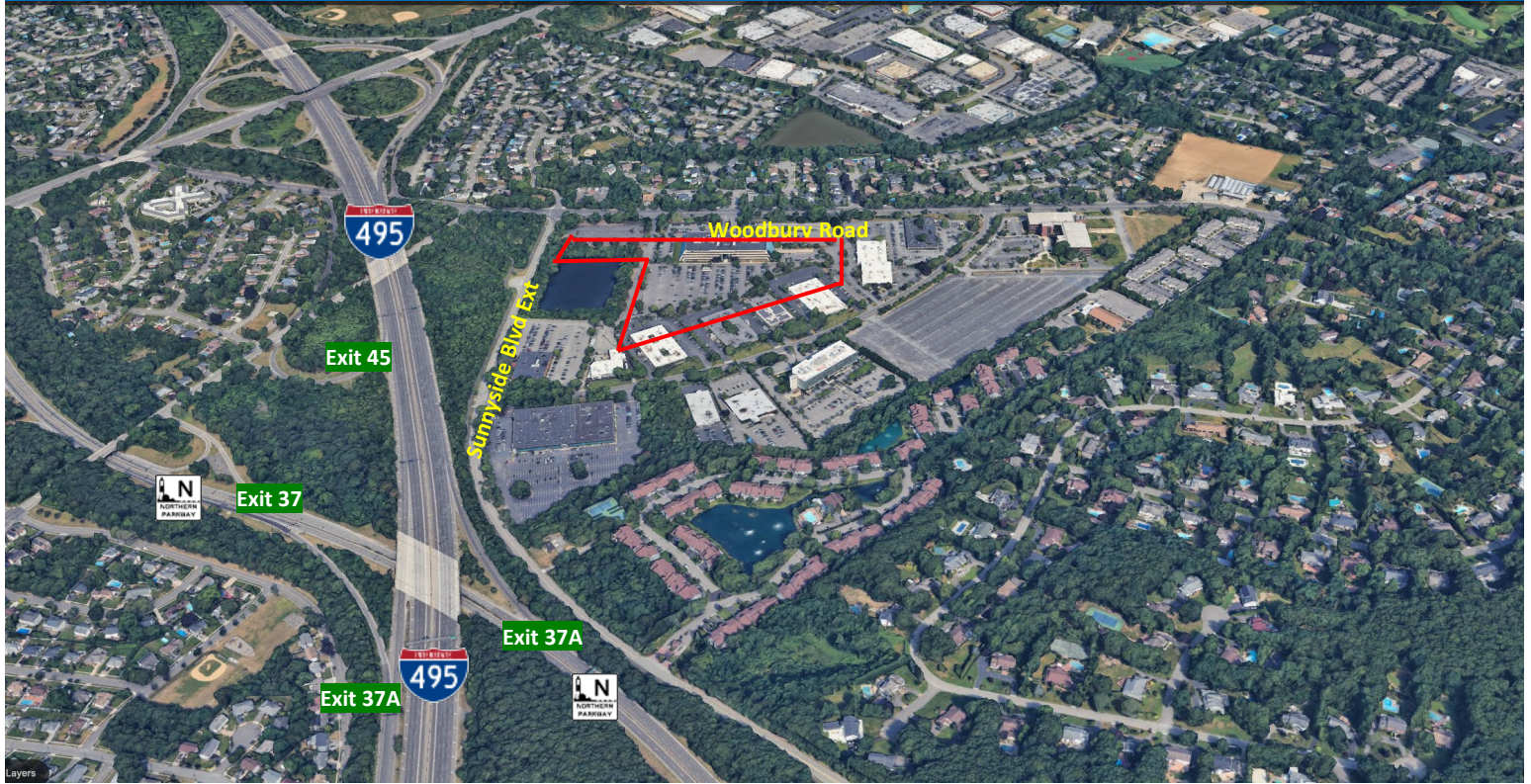
**Suite 401**  
**3,124 RSF**



**Suite 403**  
**14,341 RSF**



# NEWMARK



**FOR MORE INFORMATION, PLEASE CONTACT EXCLUSIVE BROKER:**

**Brian Lee**

*Principal/ Executive Managing Director*

O 631-673-0888; M 516-487-7770

[Brian.Lee@nrmk.com](mailto:Brian.Lee@nrmk.com)

nrmk.com

290 Broadhollow Road, Suite 103E, Melville, NY 11747



All information contained in this publication is derived from sources that are deemed to be reliable. However, Newmark has not verified any such information, and the same constitutes the statements and representations only of the source thereof, and not of Newmark. Any recipient of this publication should independently verify such information and all other information that may be material to any decision that recipient may make in response to this publication, and should consult with professionals of the recipient's choice with regard to all aspects of that decision, including its legal, financial, and tax aspects and implications. Any recipient of this publication may not, without the prior written approval of Newmark, distribute, disseminate, publish, transmit, copy, broadcast, upload, download, or in any other way reproduce this publication or any of the information it contains. This document is intended for informational purposes only and none of the content is intended to advise or otherwise recommend a specific strategy. It is not to be relied upon in any way to predict market movement, investment in securities, transactions, investment strategies or any other matter.  
©2020 Newmark. All Rights Reserved.