

# KINGS POINT MEDICAL PROFESSIONAL BLDG

15127 JOG RD, DELRAY BEACH, FL 33446



## Office Building For Lease



### PROPERTY OVERVIEW

Under new ownership, 15127 Jog Road in Delray Beach, Florida offers a compelling opportunity for medical and professional users seeking well-located space with immediate availability. The property features competitive lease rates, 24-hour controlled access, and ample parking for both tenants and visitors. Suitable for both growing businesses and established organizations, the building provides a practical and functional environment designed to support a wide range of business operations. This prime Delray Beach location offers convenient access to surrounding retail, dining, medical services, and major roadways.

### PROPERTY HIGHLIGHTS

- Under new ownership with plans for modernization renovations
- Immediately available space
- Competitive lease rates
- 24 hour controlled access
- Ample parking for tenants and visitors

### OFFERING SUMMARY

Available SF:	375 - 5,394 SF
Lease Rate:	\$30 SF/yr (MG)
Year Built/Renovated:	1980/2000
Building Size:	19,178 SF

### LOCATION OVERVIEW

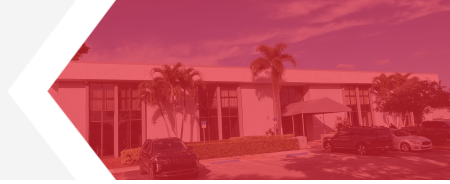
Located in the heart of Delray Beach, FL, the area surrounding the property offers a vibrant blend of business and leisure. With easy access to downtown Delray, tenants will enjoy a dynamic work environment with unique dining options, boutique shops, and cultural attractions. Convenient access to major roadways for easy commuting, while also being in close proximity to Delray Medical Center and other essential amenities. This prime location provides the ideal backdrop for tenants to work, connect, and thrive in the heart of Delray's bustling community.



David W. Knott      Kevin Buckley  
561.662.5758      919.830.7598  
dknott@kdcre.com      kbuckley@kdcre.com

# KINGS POINT MEDICAL PROFESSIONAL BLDG

15127 JOG RD, DELRAY BEACH, FL 33446



## Office Building For Lease



### LEASE INFORMATION

Lease Type:	MG	Lease Term:	Negotiable
Total Space:	375 - 5,394 SF	Lease Rate:	\$30 SF/yr

### AVAILABLE SPACES

SUITE	SIZE (SF)	LEASE TYPE	LEASE RATE	DESCRIPTION
101	2,151 SF	Modified Gross	\$30.00 SF/yr	Medical/Professional Space for lease. This unit comes with Three-Phase power.
106	5,394 SF	Modified Gross	\$30.00 SF/yr	Ready to be built-out for a qualified tenant. Plumbing access for every room available.
204	375 SF	Modified Gross	\$30.00 SF/yr	-



David W. Knott      Kevin Buckley  
561.662.5758      919.830.7598  
dknott@kdcre.com      kbuckley@kdcre.com

# KINGS POINT MEDICAL PROFESSIONAL BLDG

15127 JOG RD, DELRAY BEACH, FL 33446



## Property Details

Lease Rate	<b>\$30 SF/YR</b>
------------	-------------------

### PROPERTY INFORMATION

Property Type	Office
Property Subtype	Office Building
Zoning	CG
Lot Size	3.69 Acres
APN #	00-42-46-22-14-000-0010

### LOCATION INFORMATION

Building Name	Kings Point Medical Professional Bldg
Street Address	15127 Jog Rd
City, State, Zip	Delray Beach, FL 33446
County	Palm Beach

### PARKING & TRANSPORTATION

Parking Type	Surface
--------------	---------

### BUILDING INFORMATION

Building Size	19,178 SF
Building Class	B
Tenancy	Multiple
Number of Floors	2
Year Built	1980
Year Last Renovated	2000
Number of Buildings	1

### UTILITIES & AMENITIES

Handicap Access	Yes
Number of Elevators	1
Central HVAC	Yes
Restrooms	4



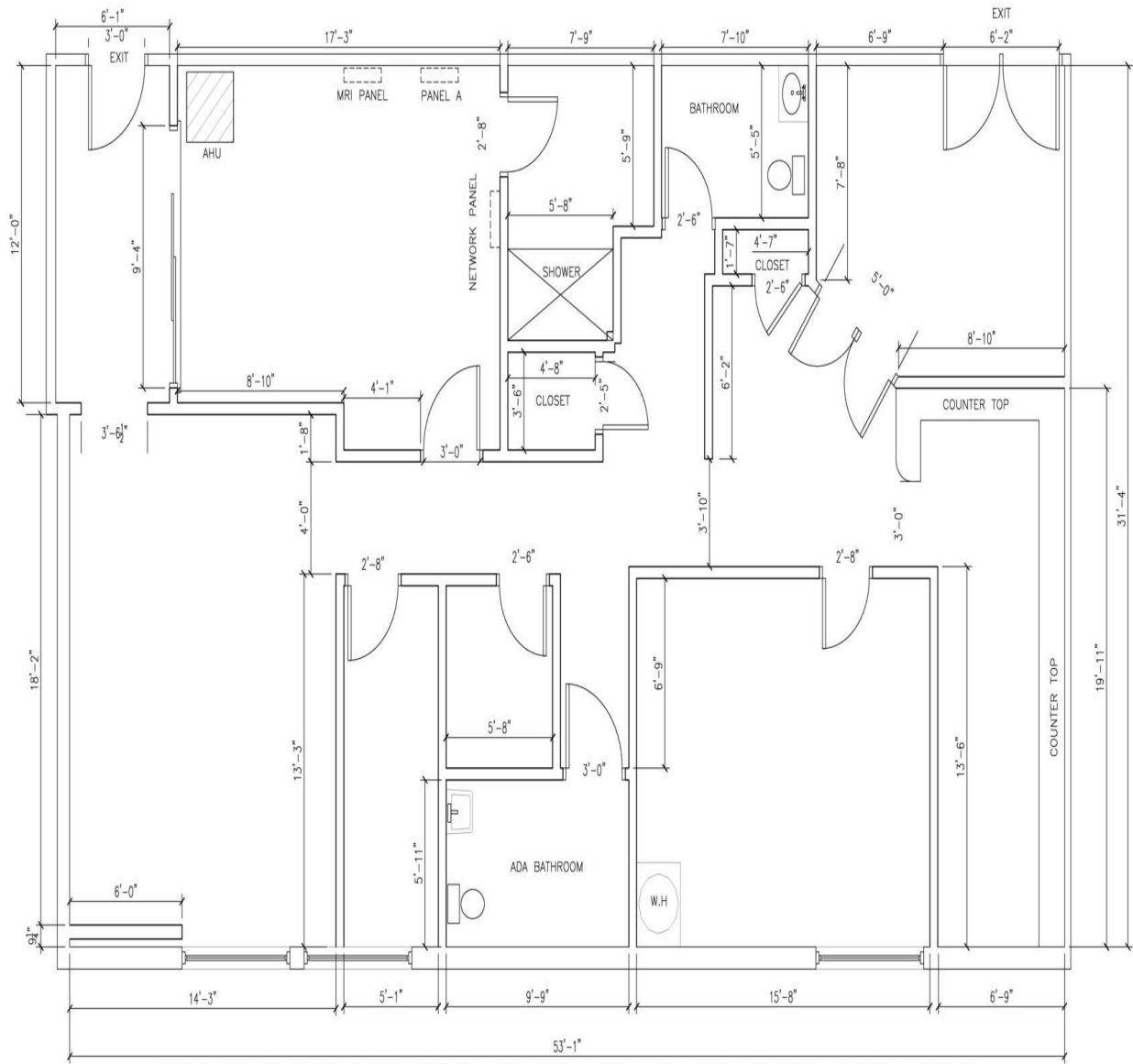
David W. Knott      Kevin Buckley  
561.662.5758      919.830.7598  
dknott@kdcre.com      kbuckley@kdcre.com

# KINGS POINT MEDICAL PROFESSIONAL BLDG

15127 JOG RD, DELRAY BEACH, FL 33446



## Floor Plan - Suite 101



KINGS POINT PLAZA PROFESSIONAL BUILDING UNIT 101-103 EXISTING FLOOR LAYOUT



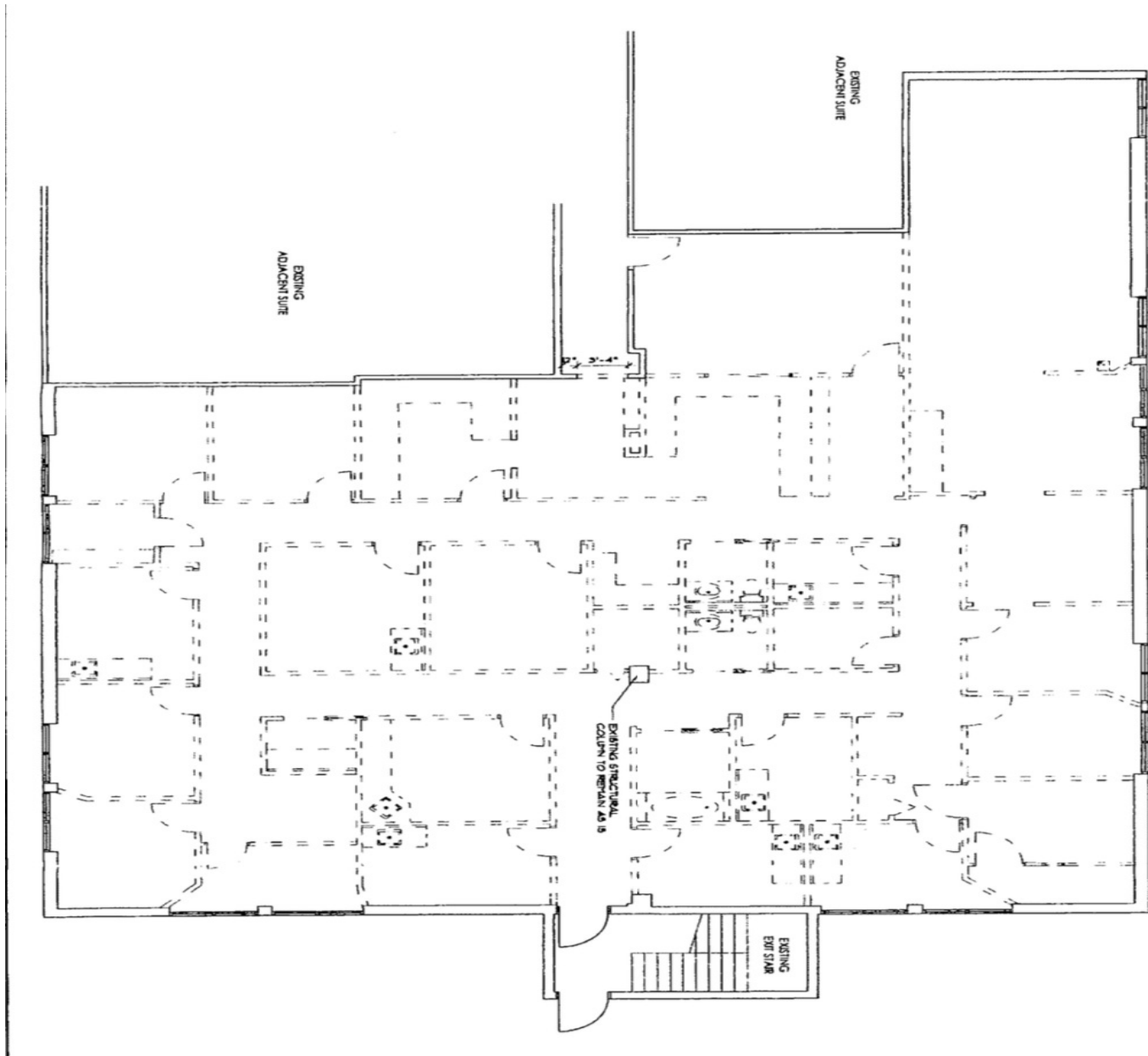
David W. Knott      Kevin Buckley  
561.662.5758      919.830.7598  
dknott@kdcre.com      kbuckley@kdcre.com

# KINGS POINT MEDICAL PROFESSIONAL BLDG

15127 JOG RD, DELRAY BEACH, FL 33446



## Floor Plan - Suite 106

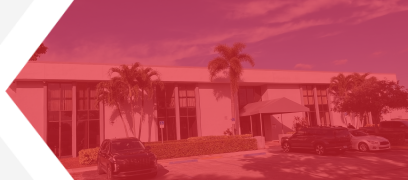


David W. Knott  
561.662.5758  
dknott@kdcre.com

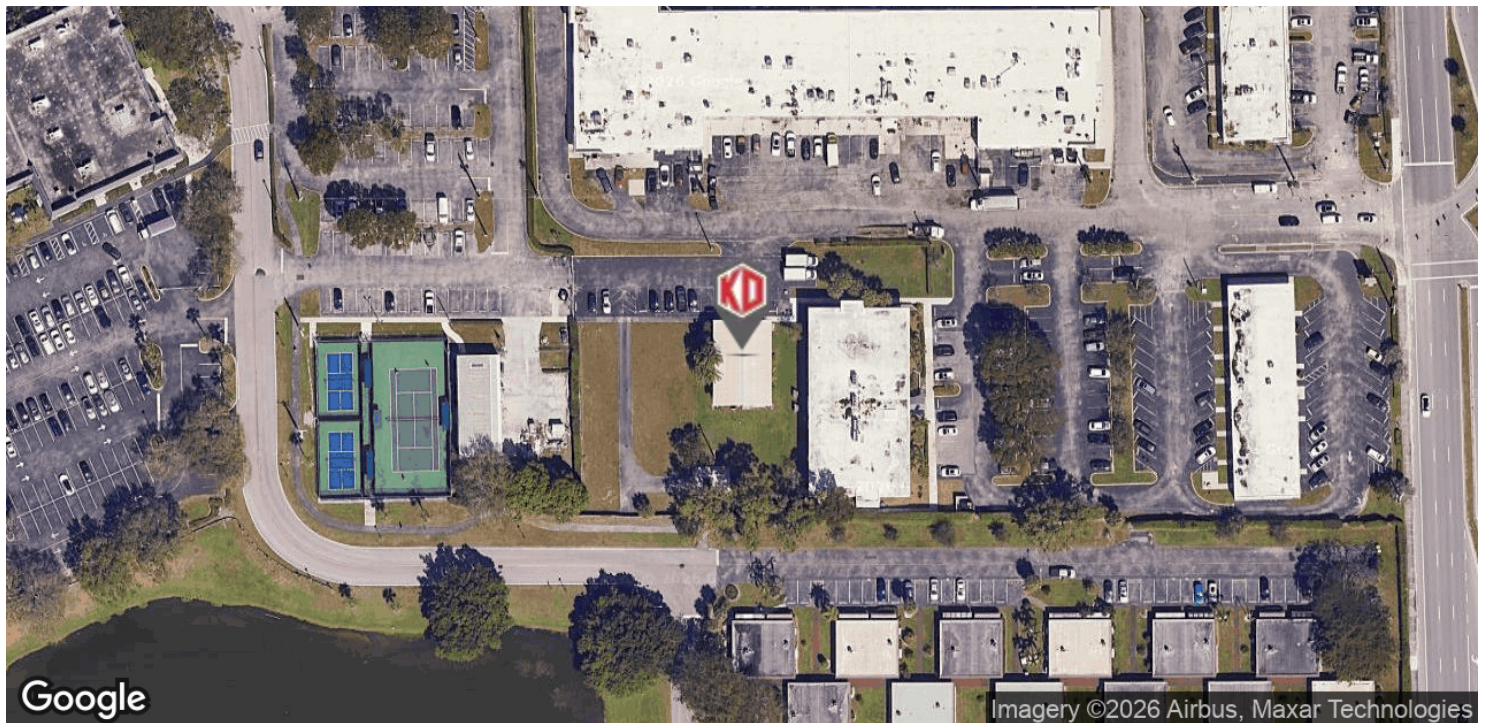
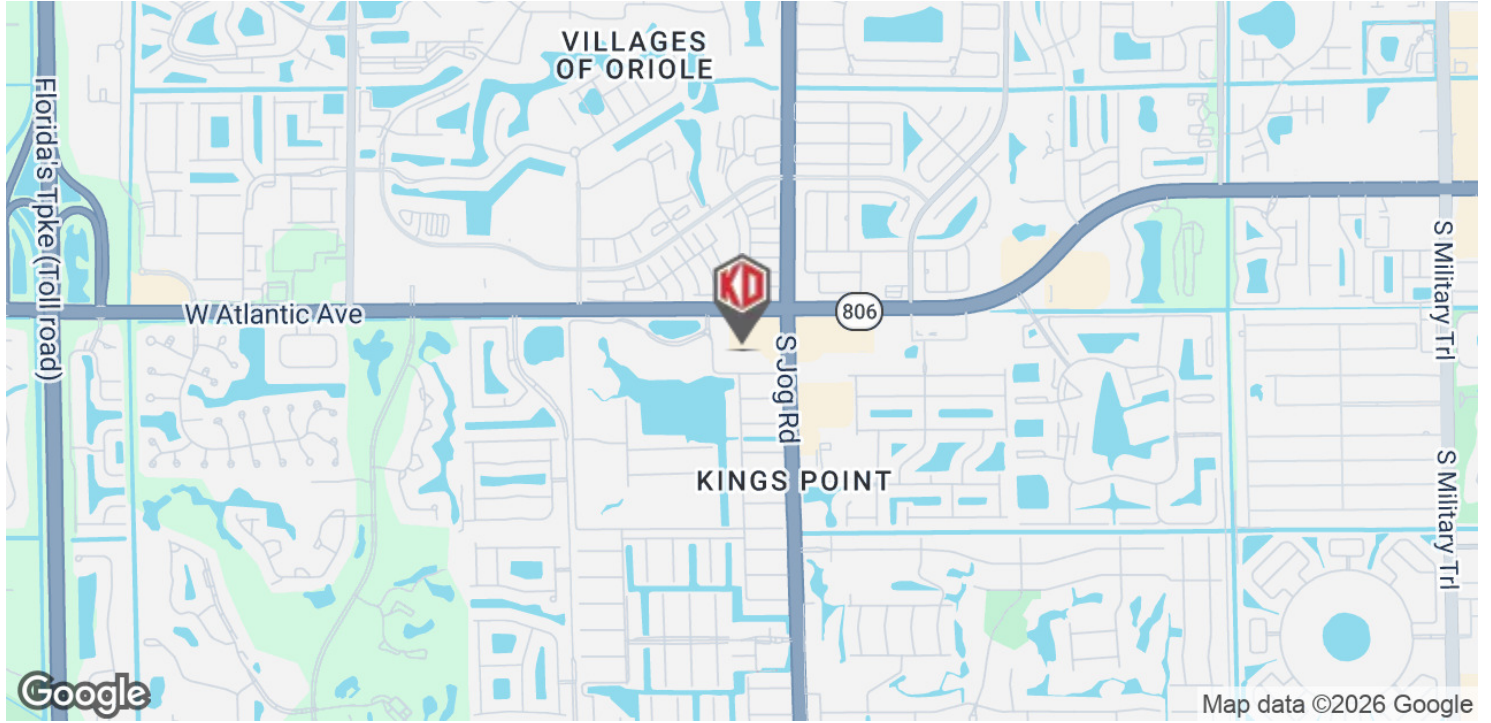
Kevin Buckley  
919.830.7598  
kbuckley@kdcre.com

# KINGS POINT MEDICAL PROFESSIONAL BLDG

15127 JOG RD, DELRAY BEACH, FL 33446



## Property Location



David W. Knott  
561.662.5758  
dknott@kdcre.com

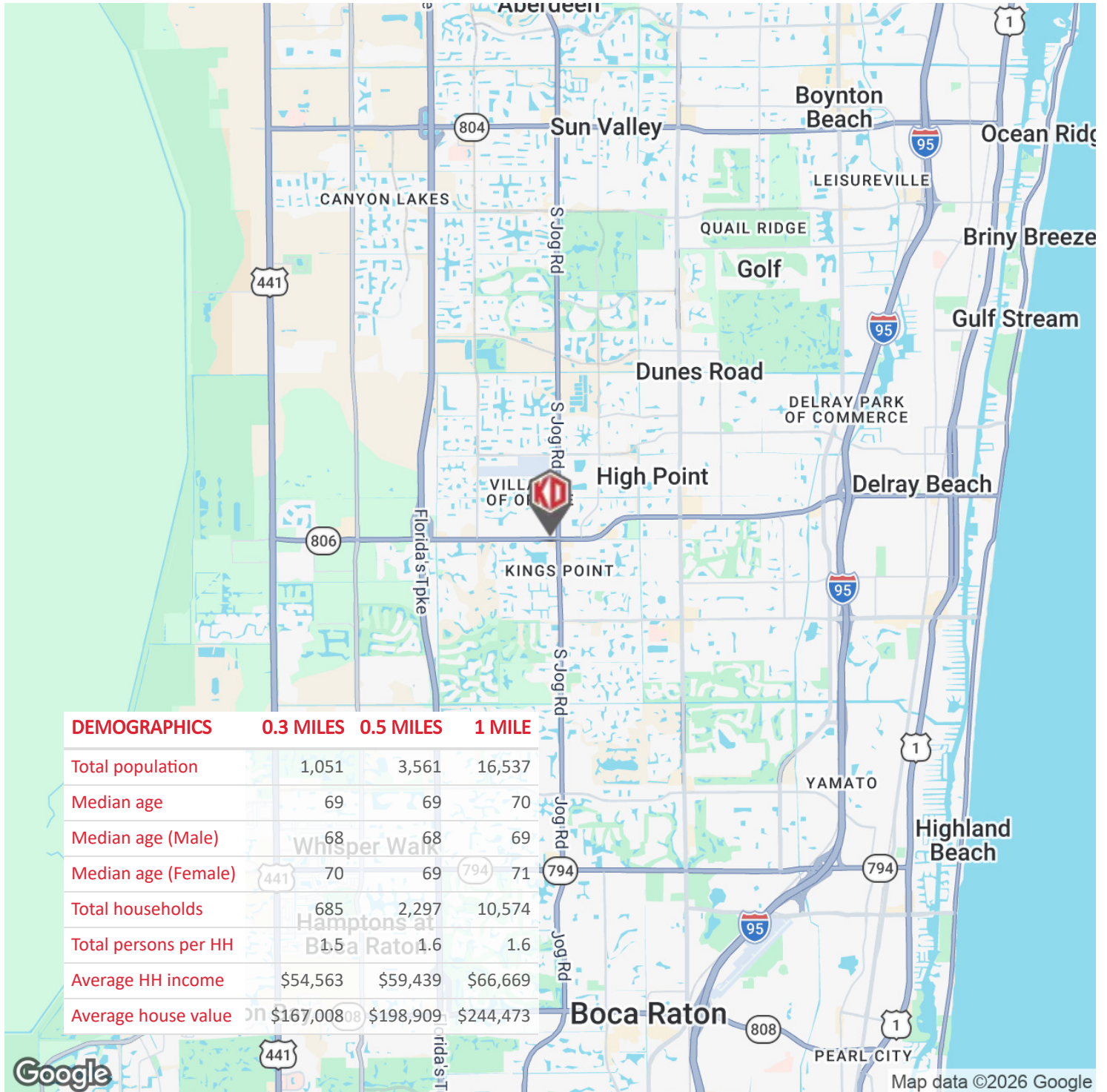
Kevin Buckley  
919.830.7598  
kbuckley@kdcre.com

# KINGS POINT MEDICAL PROFESSIONAL BLDG

15127 JOG RD, DELRAY BEACH, FL 33446



## Property Location



David W. Knott      Kevin Buckley  
 561.662.5758      919.830.7598  
 dknott@kdcre.com      kbuckley@kdcre.com