



## Property Description

Welcome to Classen Circle...a unique leasing opportunity. Originally constructed in 1948, The Donnay Building has been an intricate part of the Oklahoma City landscape providing a mix of office, retail and residential use. Time and change have been difficult on the building until a group of experienced developers had the vision to bring Classen Circle back to life. At the crossroads of the ever-thriving Northwest Expressway and Classen Boulevard, Classen Circle is located in the center of a collaboration of synergy surrounded by some of Oklahoma City's prestigious retail developments such as the Mayfair re-development, the traditional Penn Square Mall, the new development of The Oak, and the extravagance of Classen Curve. With high visibility, great traffic counts, strong demographics, and anchored by the historically redeveloped Classen Grill, Classen Circle offers over 12,000 square feet of one-of-a-kind leasing opportunities for multiple or contiguous office and retail use.

## Property Highlights

**RICK PRITCHETT, CCIM**

405.605.0831

rick@precorrealty.com

## Offering Summary

<b>Lease Rate:</b>	Negotiable
<b>Number of Units:</b>	7
<b>Available SF:</b>	726 - 3,780 SF
<b>Building Size:</b>	12,910 SF

<b>Demographics</b>	<b>0.25 Miles</b>	<b>0.5 Miles</b>	<b>1 Mile</b>
<b>Total Households</b>	265	1,299	4,656
<b>Total Population</b>	447	2,241	8,486
<b>Average HH Income</b>	\$81,889	\$65,129	\$83,207

For Lease

**Classen Circle**

1221 NW 50TH ST



**RICK PRITCHETT, CCIM**

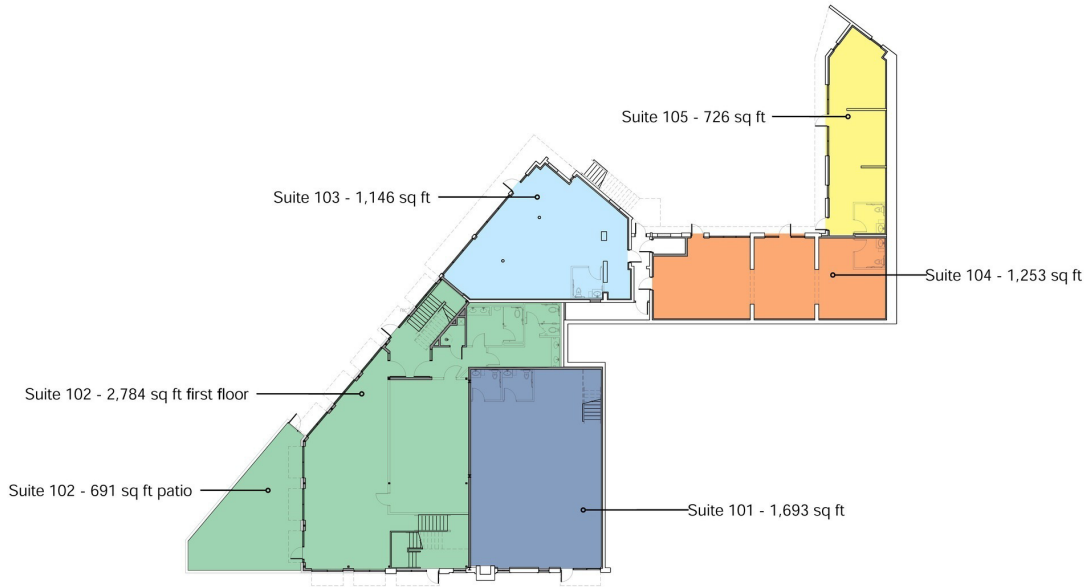
405.605.0831

rick@precorrealty.com



PRECOR REALTY ADVISORS, INC | 825 N. BROADWAY, SUITE 300, OKLAHOMA CITY, OK 73102 | 405.605.0825 | PRECORREALTY.COM

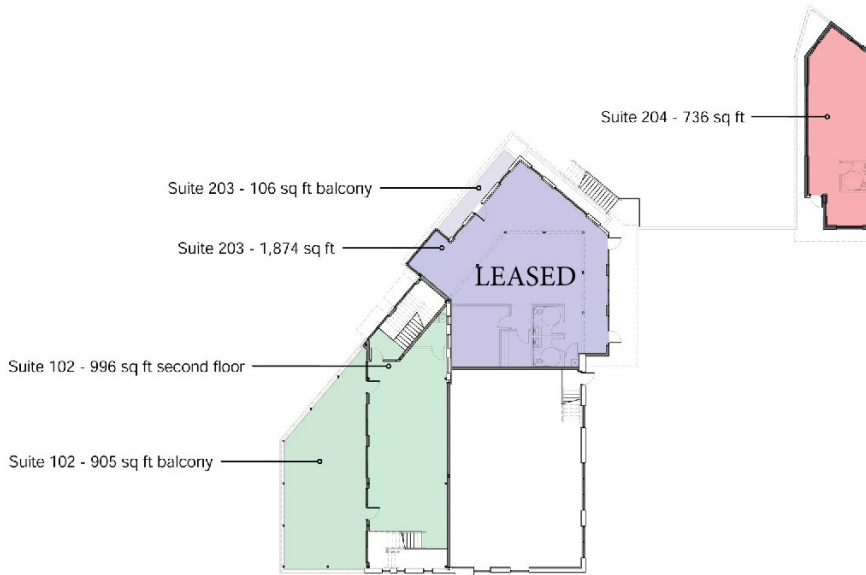
The information above has been obtained from sources believed reliable. While we do not doubt its accuracy, PrecorRuffin, LLC has not verified it and makes no guarantee, warranty or representation about it. It is your responsibility to independently confirm its accuracy.



GROUND FLOOR PLAN  
SCALE: 1/8" = 1'-0"

Classen Circle Development  
schematic design | January 17, 2025

**BOCKUS PAYNE**



SECOND FLOOR PLAN  
SCALE: 1/8" = 1'-0"

Classen Circle Development  
schematic design | January 17, 2025

**BOCKUS PAYNE**

**RICK PRITCHETT, CCIM**

405.605.0831

rick@precorreality.com



**PRECOR**  
REALTY ADVISORS

PRECOR REALTY ADVISORS, INC | 825 N. BROADWAY, SUITE 300, OKLAHOMA CITY, OK 73102 | 405.605.0825 | PRECORREALTY.COM

The information above has been obtained from sources believed reliable. While we do not doubt its accuracy, PrecorRuffin, LLC has not verified it and makes no guarantee, warranty or representation about it. It is your responsibility to independently confirm its accuracy.



**RICK PRITCHETT, CCIM**

405.605.0831

rick@precorreality.com



PRECOR REALTY ADVISORS, INC | 825 N. BROADWAY, SUITE 300, OKLAHOMA CITY, OK 73102 | 405.605.0825 | PRECORREALTY.COM

The information above has been obtained from sources believed reliable. While we do not doubt its accuracy, PrecorRuffin, LLC has not verified it and makes no guarantee, warranty or representation about it. It is your responsibility to independently confirm its accuracy.



**RICK PRITCHETT, CCIM**

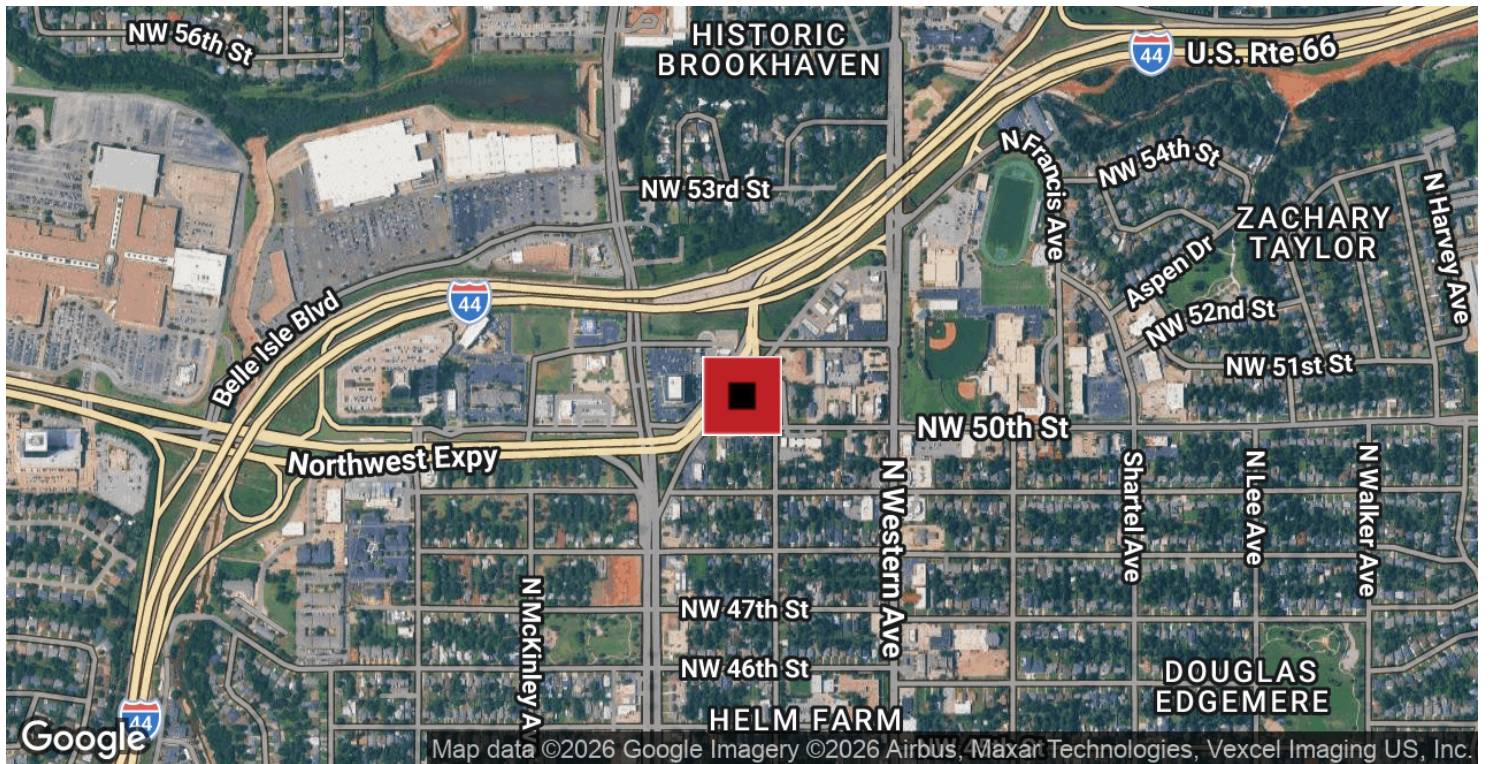
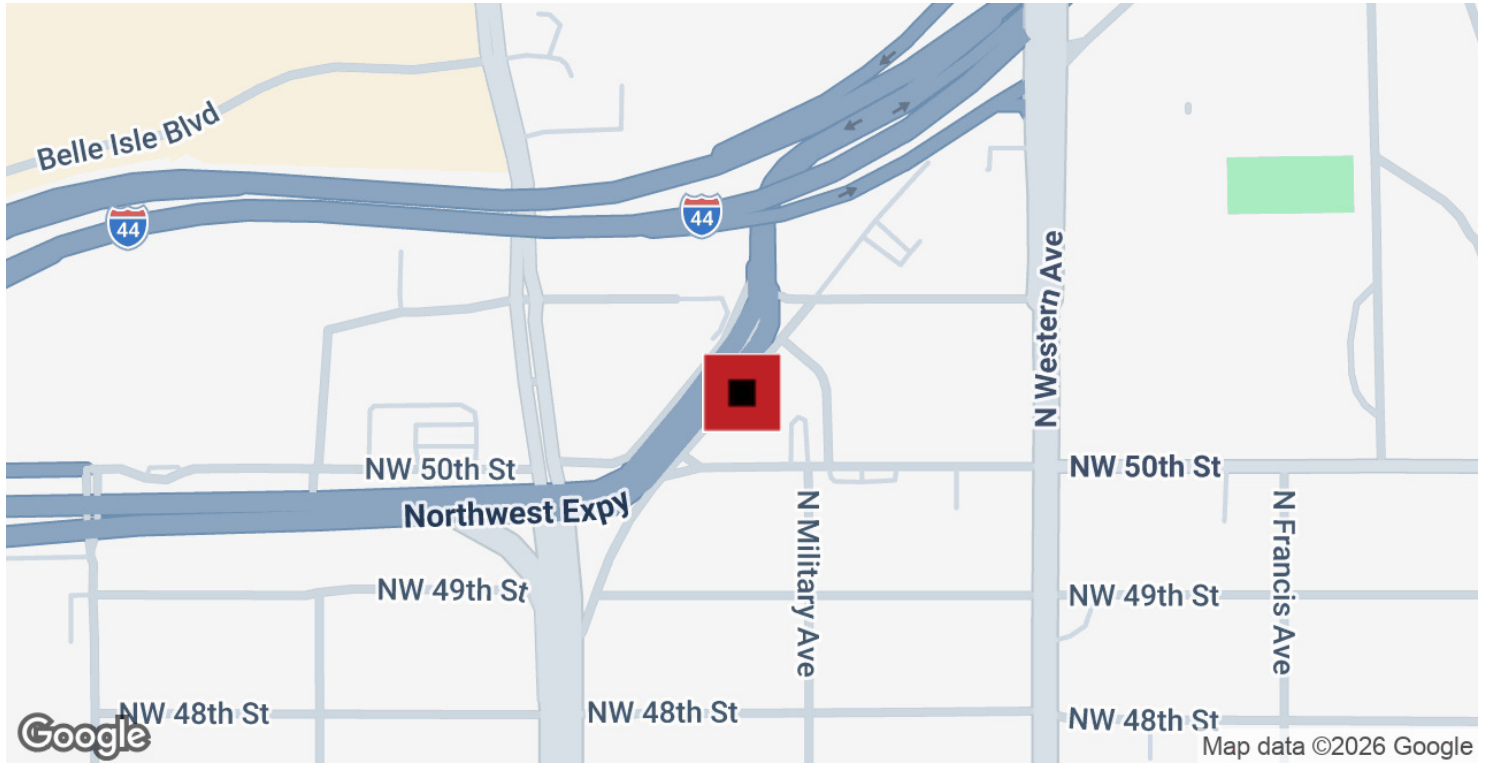
405.605.0831

rick@precorreality.com



PRECOR REALTY ADVISORS, INC | 825 N. BROADWAY, SUITE 300, OKLAHOMA CITY, OK 73102 | 405.605.0825 | PRECORREALTY.COM

The information above has been obtained from sources believed reliable. While we do not doubt its accuracy, PrecorRuffin, LLC has not verified it and makes no guarantee, warranty or representation about it. It is your responsibility to independently confirm its accuracy.



**RICK PRITCHETT, CCIM**

405.605.0831

rick@precorrealty.com



PRECOR REALTY ADVISORS, INC | 825 N. BROADWAY, SUITE 300, OKLAHOMA CITY, OK 73102 | 405.605.0825 | PRECORREALTY.COM

The information above has been obtained from sources believed reliable. While we do not doubt its accuracy, PrecorRuffin, LLC has not verified it and makes no guarantee, warranty or representation about it. It is your responsibility to independently confirm its accuracy.