



## OFFICE CONDO FOR LEASE

- Unit 19B: 1,020 SF
- Type: 2 Star Office Condo
- Stories: 2
- Parking: 35 Surface (2.46/1,000 SF)

## BUILDING AMENITIES

- 24 Hour Access
- Drop Ceiling
- Air Conditioning
- Free Parking
- Located near the Rockville Metro and restaurants/shops

**ROBERT PUGH**

rpugh@klnb.com | 301-222-0211

**LUCAS GLAESER**

lglaeser@klnb.com | 301-265-5914

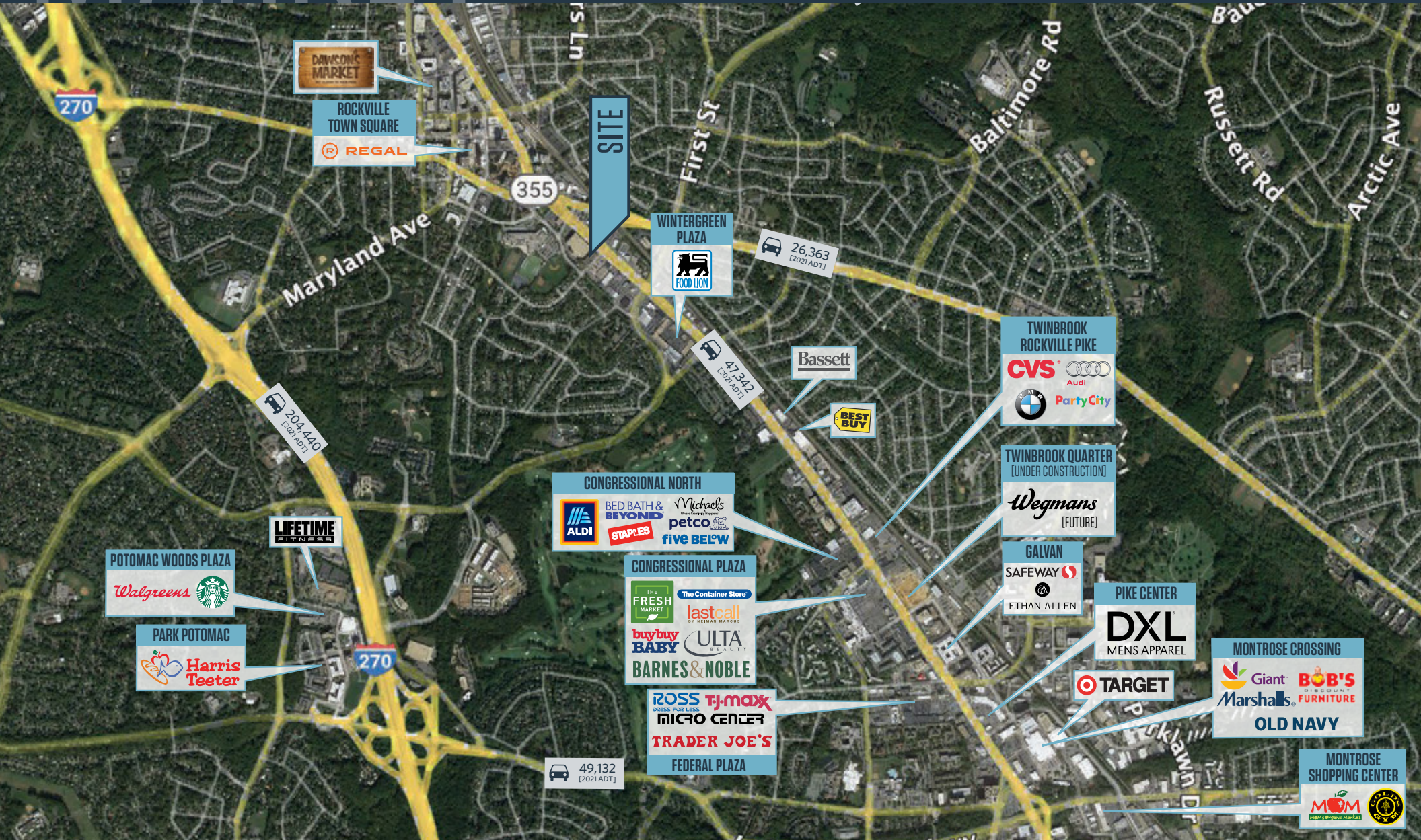
**KEIRY MARTINEZ**

kmartinez@klnb.com | 703-334-5629

# MARKET

# 751 ROCKVILLE PIKE

ROCKVILLE, MARYLAND 20852, MONTGOMERY COUNTY, MD



**KENNETH FELLOWS**

kfellows@klnb.com | 301-222-0210

**ROBERT PUGH**

rpugh@klnb.com | 301-222-0211

**KEIRY MARTINEZ**

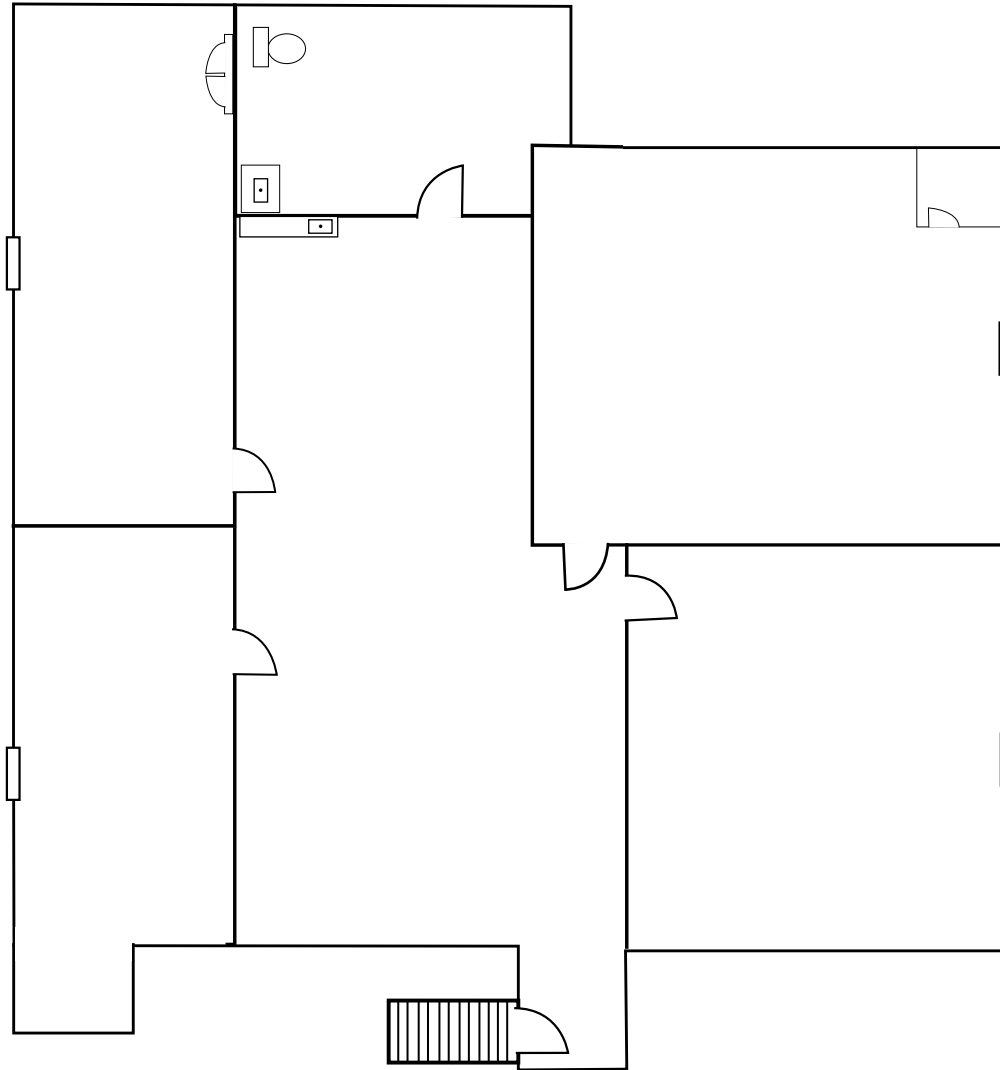
kmartinez@klnb.com | 703-334-5629



### SUITE 19B

1,020 SF

VIRTUAL TOUR





# 751 ROCKVILLE PIKE

ROCKVILLE, MARYLAND 20852, MONTGOMERY COUNTY, MD

## FOR MORE INFORMATION, PLEASE CONTACT:

### ROBERT PUGH

rpugh@klnb.com  
301-222-0211

### LUCAS GLAESER

lglaeser@klnb.com  
301-265-5614

### KEIRY MARTINEZ

kmartinez@klnb.com  
703-334-5629

12435 Park Potomac Ave, Suite 250, Rockville, MD 20854

.....

## klnb.com

 [facebook.com/KLNB](https://facebook.com/KLNB)

 [@KLNBLLC](https://twitter.com/KLNBLLC)

 [linkedin.com/company/klnb](https://linkedin.com/company/klnb)

 [instagram.com/klnbllc](https://instagram.com/klnbllc)

While we have no reason to doubt the accuracy of any of the information supplied, we cannot, and do not, guarantee its accuracy. All information should be independently verified prior to a purchase or lease of the property. We are not responsible for errors, omissions, misuse, or misinterpretation of information contained herein and make no warranty of any kind, express or implied, with respect to the property or any other matters.