

# CONTRACTOR YARDS FOR LEASE

CHOOSE YOUR  
OWN SIZE!  
± 0.25 - ± 10.00 ACRES

14640 E WILLIS RD  
E of NEC of LOOP 202  
& LINDSAY RD  
GILBERT, AZ

LINDSAY RD

S CONCORD ST

E WILLIS RD

LOOP  
202

MATT ZACCARDI  
D: 480.966.7625  
M: 602.561.1339  
mzaccardi@cpiaz.com

THE LEROY  
BREINHOLT  
TEAM

KELLI JELINEK  
D 480.214.1109  
M 480.369.7872  
kjlinek@cpiaz.com

DAVID BEAN  
D 480.214.1105  
M 480.299.5964  
dbean@cpiaz.com

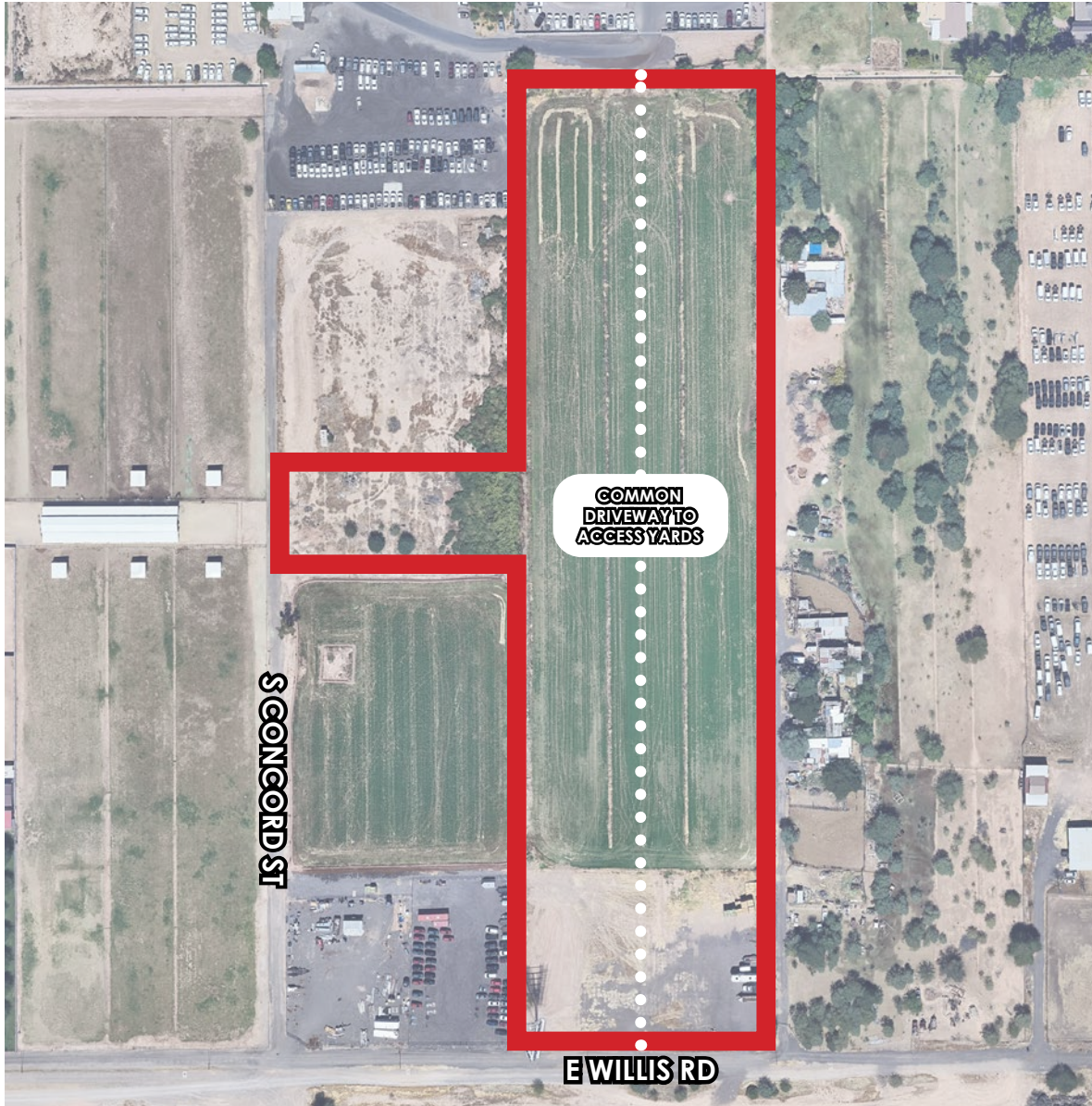


COMMERCIAL PROPERTIES INC.

Locally Owned. Globally Connected. CORFAC

TEMPE: 2323 W. University Drive, Tempe, AZ 85281 | 480.966.2301  
SCOTTSDALE: 8777 N. Gainey Center Dr., Suite 245, Scottsdale, AZ 85258 | www.cpiaz.com

## CONTRACTOR YARDS FOR LEASE



# About the Property

## ADDRESS

14640 E Willis Rd  
Gilbert, AZ 85297

## LEASE RATE

\$0.25 - \$0.30/SF/Month

## ZONING

C-2, Town of Gilbert  
(Allows Contractor Yards)

**\*NO WATER OR ELECTRIC, FENCED YARDS ONLY**

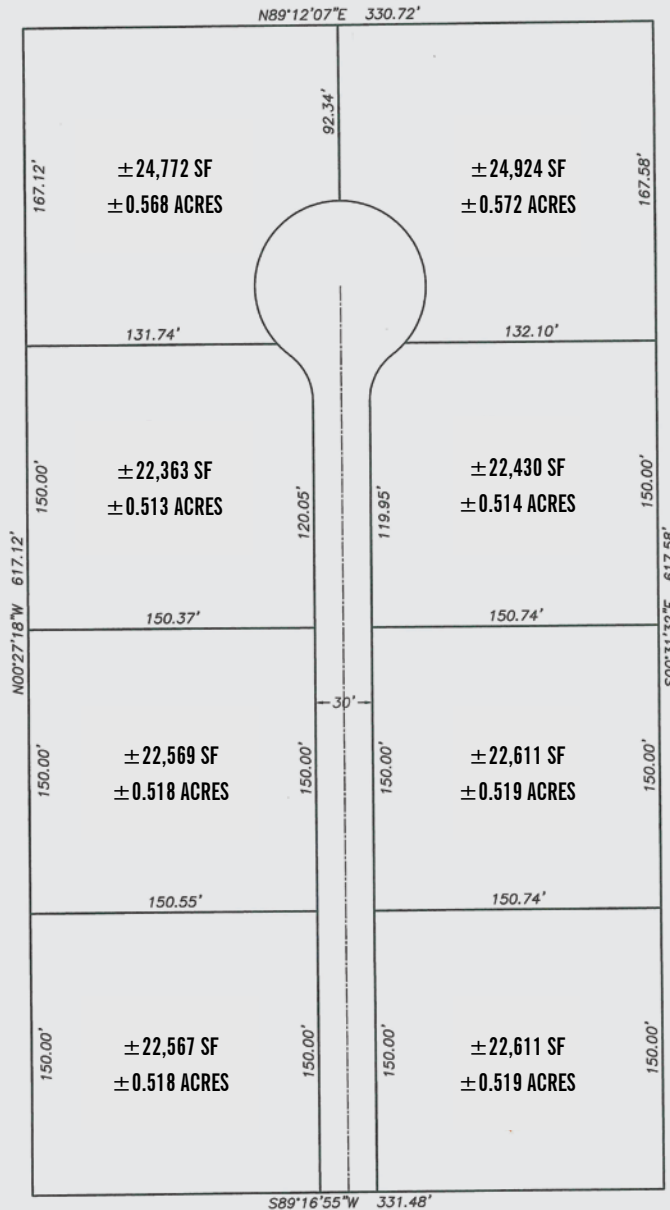
## CHOOSE YOUR OWN SIZE!

± 0.25 ACRES	\$0.30
± 0.50 ACRES	\$0.30
± 0.75 ACRES	\$0.30
± 1.00 ACRES	\$0.30
± 2.00 ACRES	\$0.25
± 3.00 ACRES	\$0.25
± 4.00 ACRES	\$0.25
± 5.00 ACRES	\$0.25
± 6.00 ACRES	\$0.25
± 7.00 ACRES	\$0.25
± 8.00 ACRES	\$0.25
± 9.00 ACRES	\$0.25
± 10.00 ACRES	\$0.25

The information contained herein has been obtained from various sources. We have no reason to doubt its accuracy; however, J & J Commercial Properties, Inc. has not verified such information and makes no guarantee, warranty or representation about such information. The prospective buyer or lessee should independently verify all dimensions, specifications, floor plans, and all information prior to the lease or purchase of the property. All offerings are subject to prior sale, lease, or withdrawal from the market without prior notice.

11 21 24

# Conceptual Yard Configuration



## CHOOSE YOUR OWN SIZE!

±0.25 ACRES	\$0.30
±0.50 ACRES	\$0.30
±0.75 ACRES	\$0.30
±1.00 ACRES	\$0.30
±2.00 ACRES	\$0.25
±3.00 ACRES	\$0.25
±4.00 ACRES	\$0.25
±5.00 ACRES	\$0.25
±6.00 ACRES	\$0.25
±7.00 ACRES	\$0.25
±8.00 ACRES	\$0.25
±9.00 ACRES	\$0.25
±10.00 ACRES	\$0.25

# About the Area

