



SAN FRANCISCO, CA 94107

FOR LEASE

55 Potrero Ave

+/- 10,000 SF AVAILABLE
Renovated Flex / R&D H.Q. Building in Potrero Hill

PROPERTY OVERVIEW

| 55 Potrero Ave

SPACE

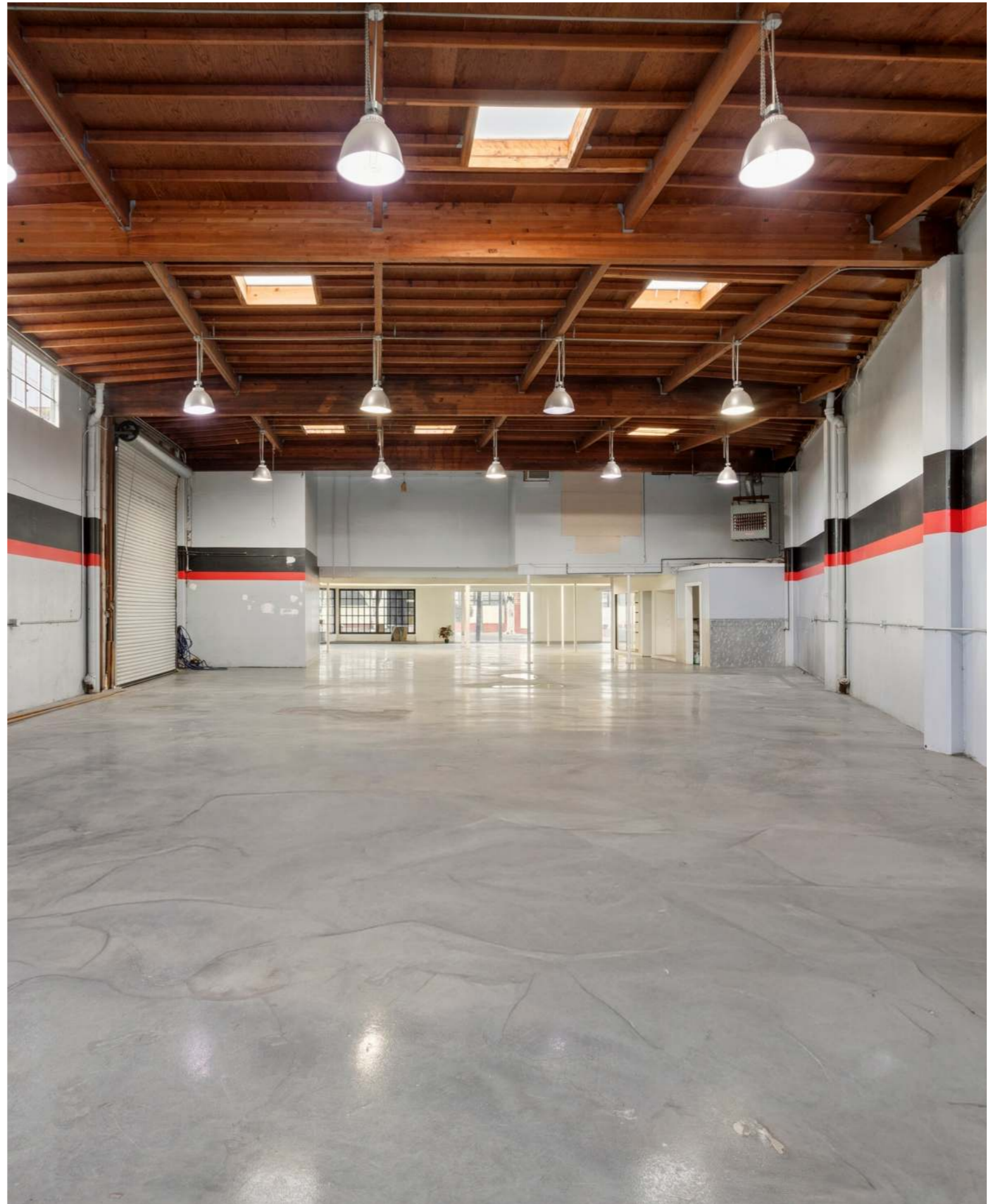
+/- 10,000 SF Available

ASKING RENT

\$55 / Sq. ft., Industrial Gross

BUILDING ATTRIBUTES

- Renovated Flex / R&D H.Q. Building
- 2,500 Sq. Ft. of Creative Office
- 14' 7" Drive-In Door
- Three (3) Meeting Rooms (Ability to Add More)
- Twelve (12) Large Skylights
- Heavy Power on Site
- 18' Ceiling Heights
- Clear Span Space
- Secure Parking for 2-3 Vehicles
- Floor Drains
- Fantastic Signage / Branding Opportunities



GALLERY

| 55 Potrero Ave



GALLERY

| 55 Potrero Ave



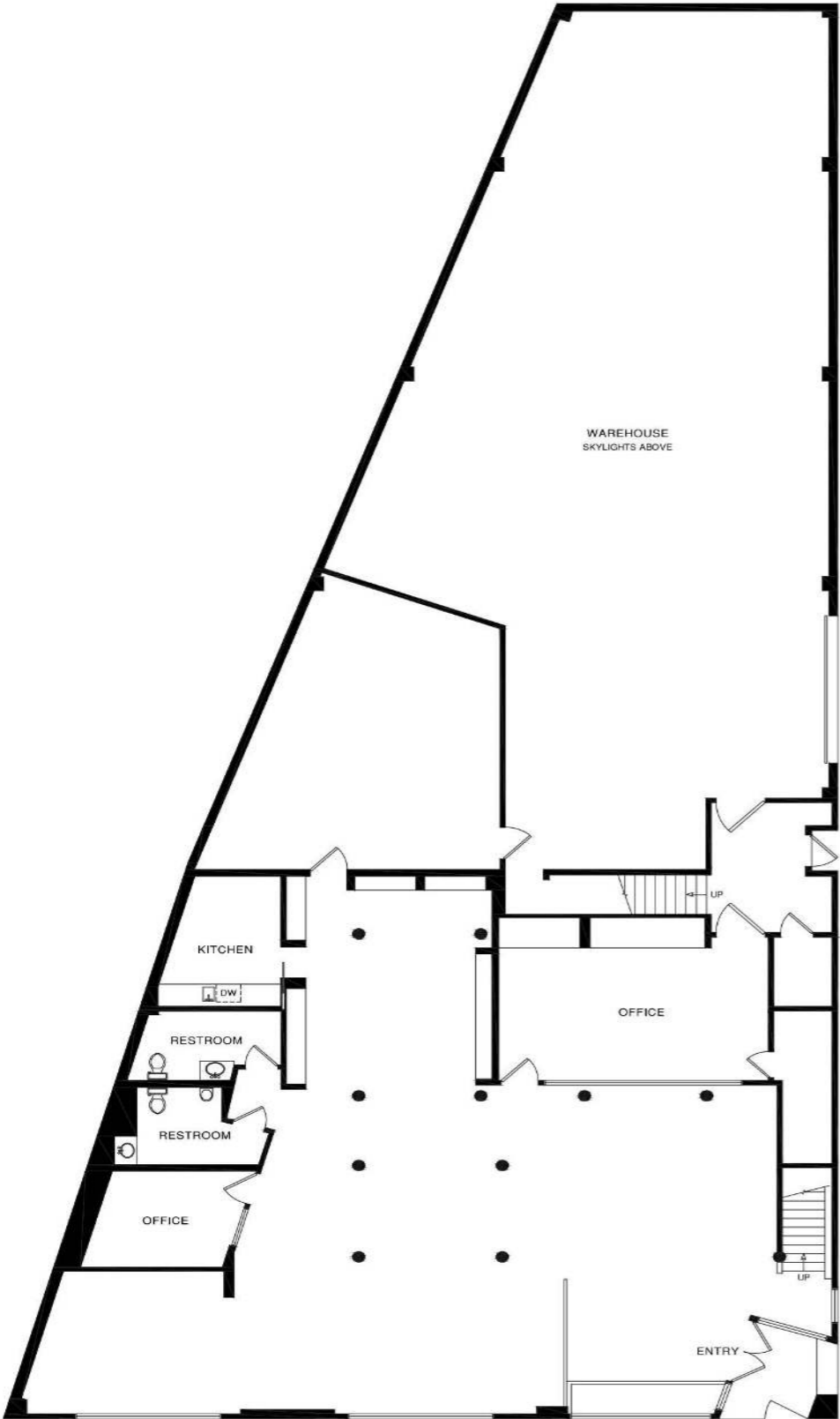
GALLERY

| 55 Potrero Ave



FLOORPLANS

| 55 Potrero Ave



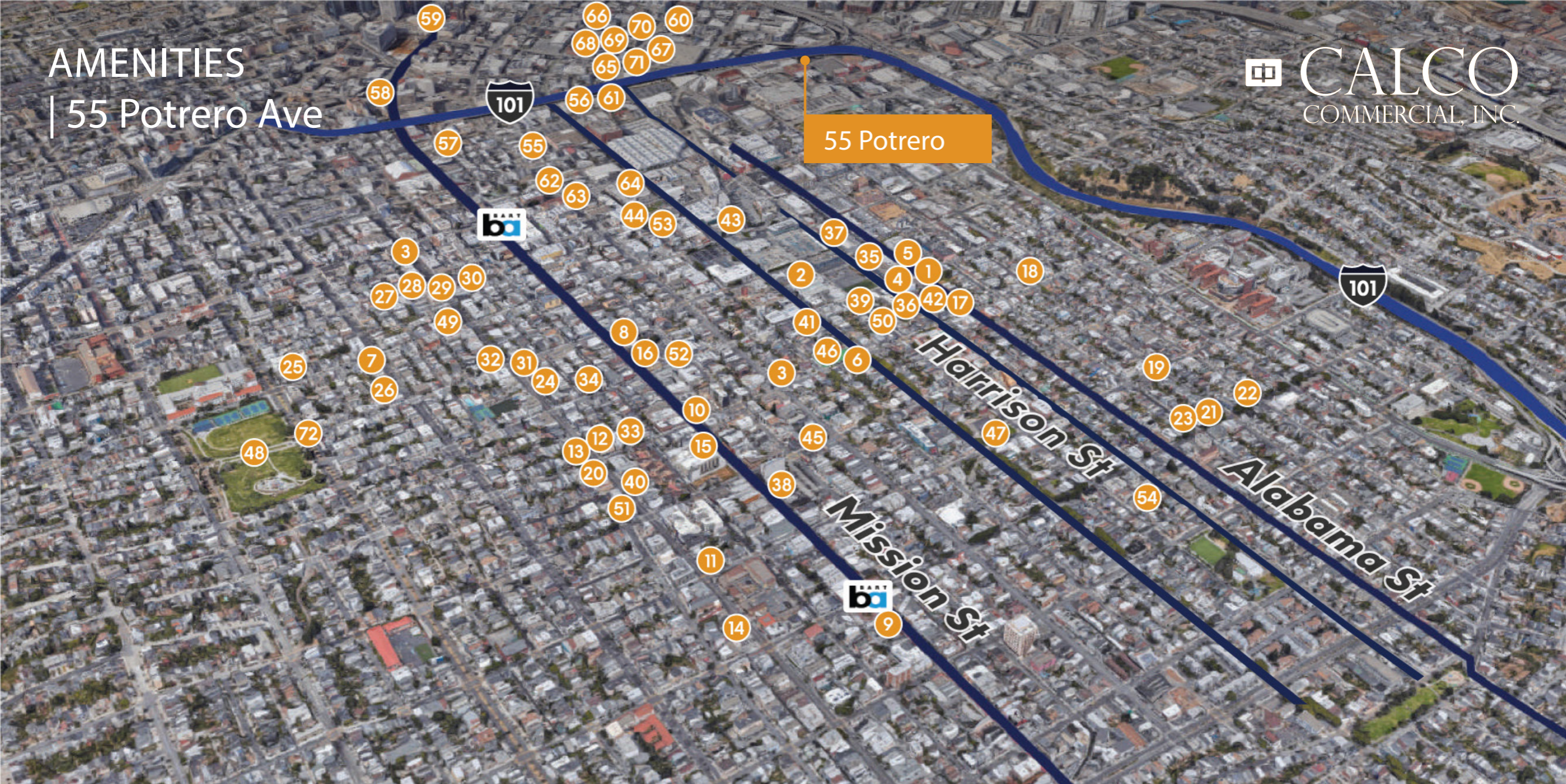
Ground floor



2nd floor

AMENITIES

| 55 Potrero Ave



- | | | | | | |
|----------------------------|------------------|------------------------------|-------------------------------|--------------------------|---------------------------|
| 1 Atlas Cafe | 13 Senor Sisig | 25 Bi-rite market | 37 Mission Cliff s | 49 PanIQ Escape Room | 61 Rainbow grocery |
| 2 Southern Pacific Brewery | 14 Barzotto | 26 Tartine Bakery | 38 Max Fitness Crossfit | 50 Mission Arts Center | 62 16th st Bar t |
| 3 Limon Rotisserie e | 15 Bear Vs. Bull | 27 The Monks Kettle | 39 Movement Lab | 51 The Mars h | 63 Slate |
| 4 Flour + Water | 16 Dr. Teet h | 28 Cream | 40 Burn SF | 52 Alioto Park | 64 Mission Bowling Club |
| 5 True Laurel | 17 Bon Nene | 29 Limon Rottiseri e | 41 Moxie: 20th Street | 53 CDC Theatre | 65 DNA lounge |
| 6 Heirloom Cafe | 18 Asiento | 30 Bond Bar | 42 Golden Gate Fencing Center | 54 Balmy Alley | 66 Sextant coffee rosters |
| 7 Tartine | 19 Spice Jar | 31 Boba Guys Mission | 43 Soul Sanctuary | 55 Foodsco | 67 Slim s |
| 8 Barrel Proof | 20 Lolo | 32 Project Juice | 44 Mission Bowl | 56 Nihon Whiskey lounge | 68 Audio Nightclub |
| 9 Rosamunde | 21 Zita Wine Bar | 33 Valencia Whole Foods | 45 Urban Put t | 57 The armory Club | 69 Wish |
| 10 Myriad Gastropub | 22 Pop's Bar | 34 Garden Creamery | 46 Jose Coronado Park | 58 Public works Club | 70 V Cafe |
| 11 Beretta | 23 Sake Bomb | 35 Hit Fit SF | 47 Parque Ninos Unidos | 59 Cats head BBQ | 71 Butte r |
| 12 Mission Picnic | 24 Amnesia | 36 Mission Recreation Center | 48 Mission Dolores Park | 60 Soma Street Food Park | 72 Tartine bakery |

SURROUNDING TENANTS

| 55 Potrero Ave





TREVOR GUDIM

Executive Vice President
Email: trevor@calco-sf.com
Cell: 858.922.2632
DRE #01979980

CHARLES WILLIAMS

Associate
Email: charles@calco-sf.com
Cell: 916.757.3154
DRE #02244143

**PIONEERING REAL ESTATE
SOLUTIONS WITH
PROVEN EXPERTISE**

CADEN THOMPSON

Associate
Email: caden@calco-sf.com
Cell: 916.316.1040
DRE #02244574

Calco Commercial, founded in 2011 by Scott Mason, brings over 35 years of experience and 2,500+ transactions, totaling over \$2.2 billion in sales and leases. Specializing in leasing and sales of commercial real estate in the San Francisco Bay Area and nationwide, we consistently rank as a top-producing firm. With deep knowledge of the Bay Area market, our team offers clients over three decades of expertise and exceptional customer service, providing the tools and guidance to navigate the ever-changing commercial real estate landscape.