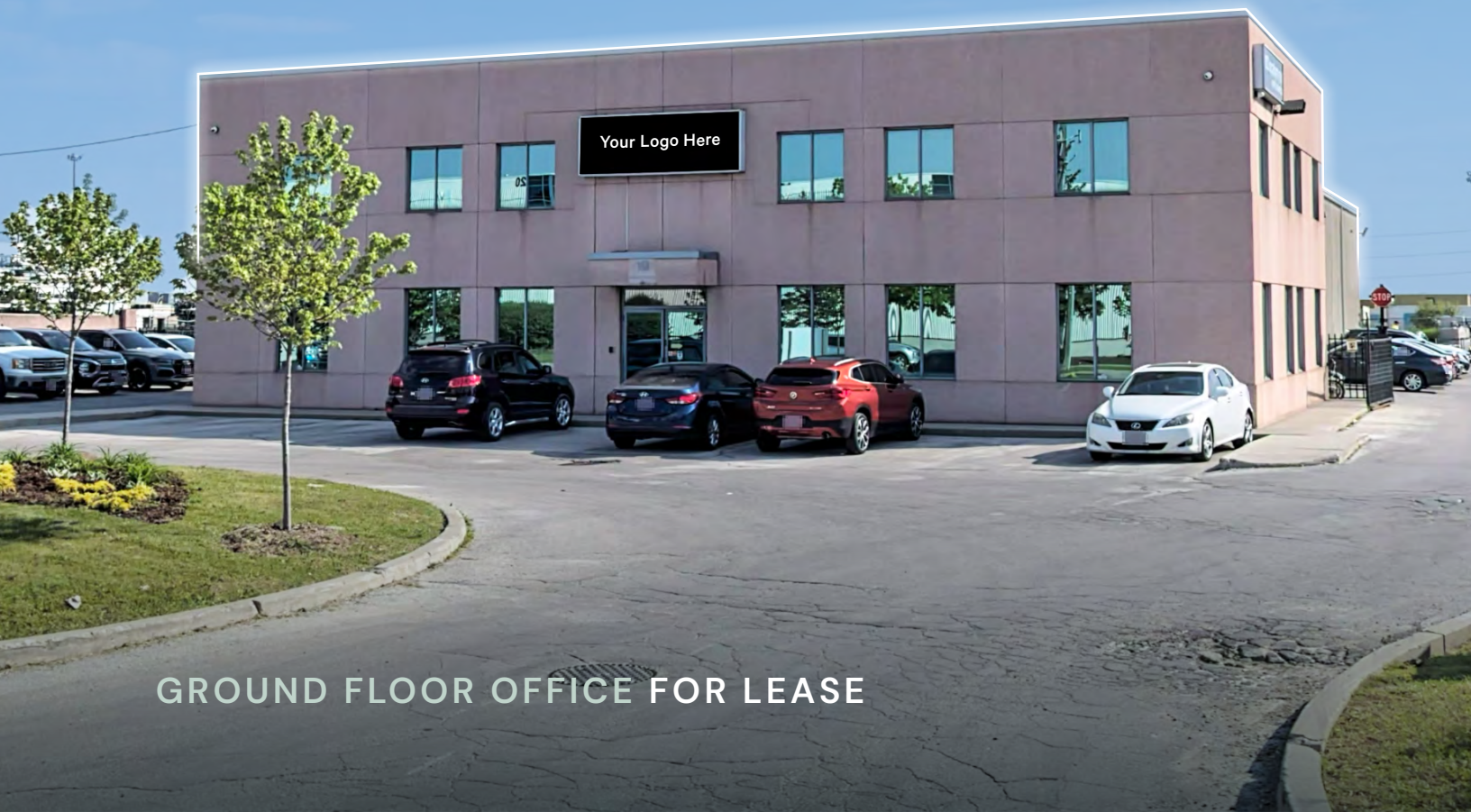


CBRE

19

Delta Park Boulevard

BRAMPTON, ONTARIO



GROUND FLOOR OFFICE FOR LEASE

Property Details



Accessibility
Airport Rd & Highway 407



Availability
Immediate



Location
Established Brampton
business node



Parking
8 free surface stalls with
front door accessibility



Available Space
3,032 Sq. Ft.



Asking Gross Rate¹
\$18.00 per Sq. Ft.

¹Utilities included



Zoning
M3



Leaseholds
Cost effective ready
to go office suite



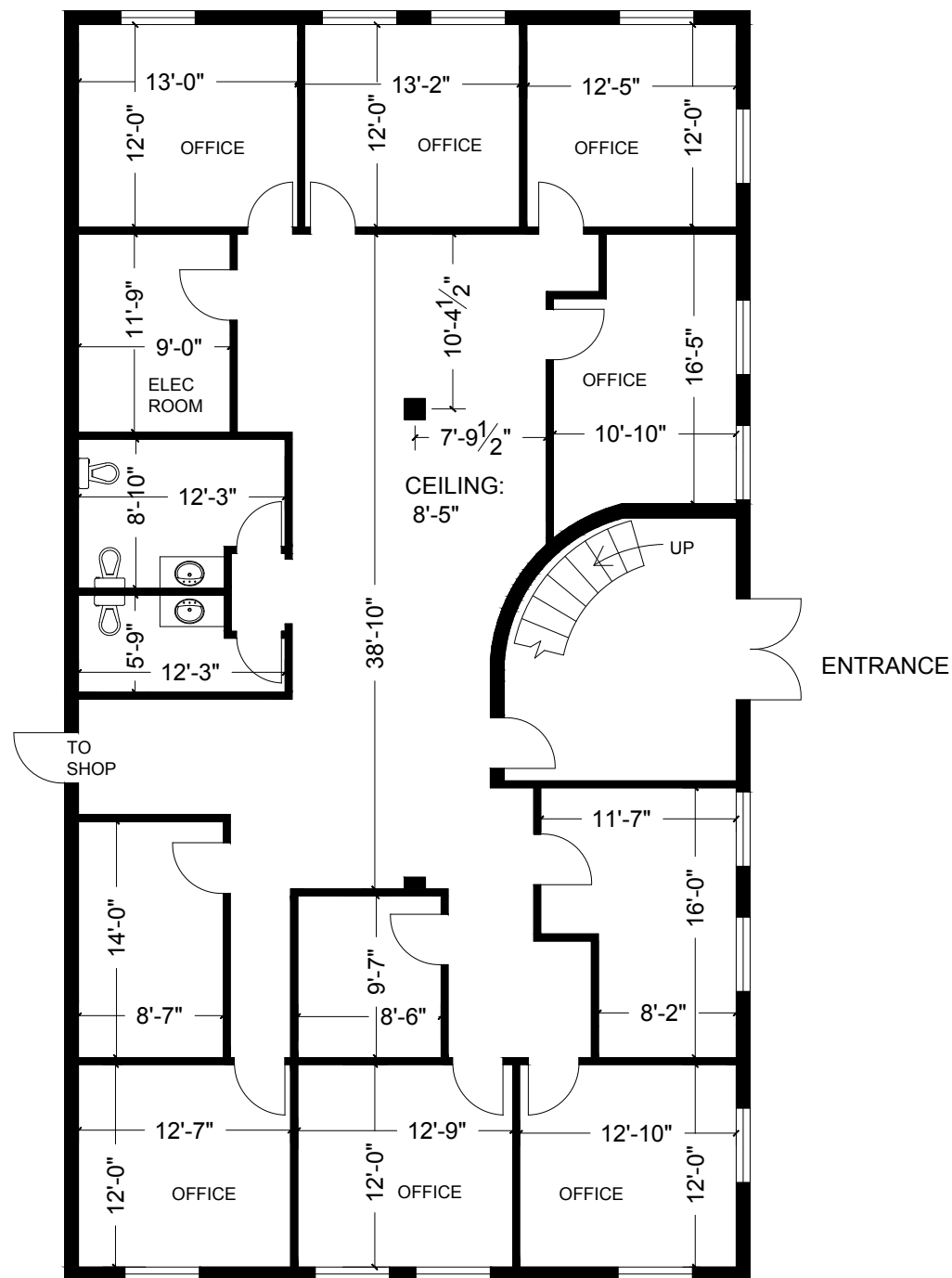
Office Area
100%

19 Delta Park Boulevard • Office For Lease



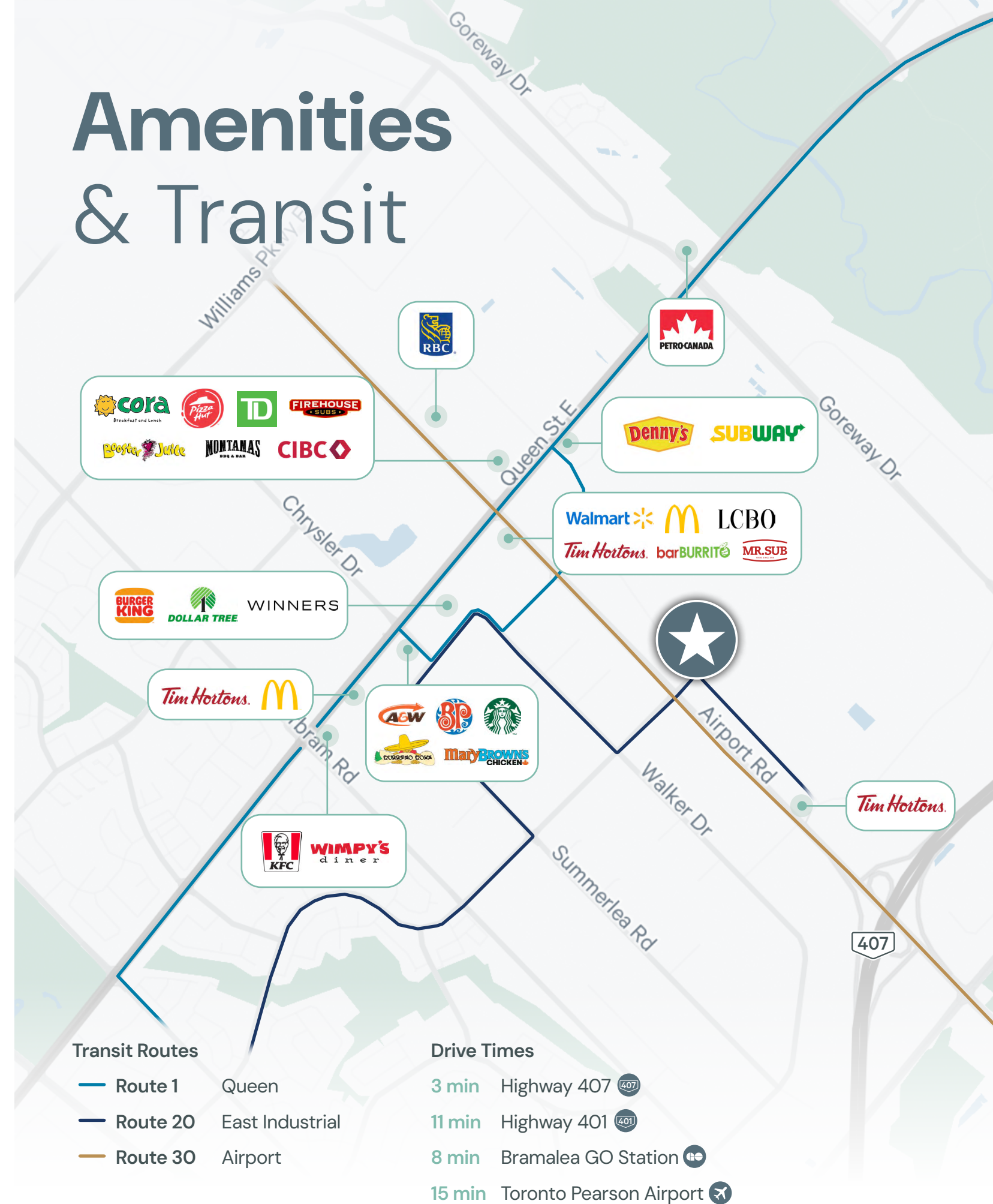
Floor Plan

Ground Floor
3,032 Sq. Ft.



19 Delta Park Boulevard • Office For Lease

Amenities & Transit



CBRE

19

Delta Park Boulevard

BRAMPTON, ONTARIO

Contact Us

Kay Locke*

Senior Vice President
+1 416 798 6268
kay.locke@cbre.com

Pat Viele*

Executive Vice President
+1 416 495 6258
pat.viele@cbre.com

© CBRE, Inc. This disclaimer shall apply to CBRE Limited, Real Estate Brokerage, and to all other divisions of the Corporation; to include all employees and independent contractors ("CBRE"). The information set out herein, including, without limitation, any projections, images, opinions, assumptions and estimates obtained from third parties (the "Information") has not been verified by CBRE, and CBRE does not represent, warrant or guarantee the accuracy, correctness and completeness of the Information. CBRE does not accept or assume any responsibility or liability, direct or consequential, for the Information or the recipient's reliance upon the Information. The recipient of the Information should take such steps as the recipient may deem necessary to verify the Information prior to placing any reliance upon the Information. The Information may change and any property described in the Information may be withdrawn from the market at any time without notice or obligation to the recipient from CBRE. CBRE and the CBRE logo are the service marks of CBRE Limited and/or its affiliated or related companies in other countries. All other marks displayed on this document are the property of their respective owners. All Rights Reserved. Mapping Sources: Canadian Mapping Services canadamapping@cbre.com; DMTI Spatial, Environics Analytics, Microsoft Bing, Google Earth.