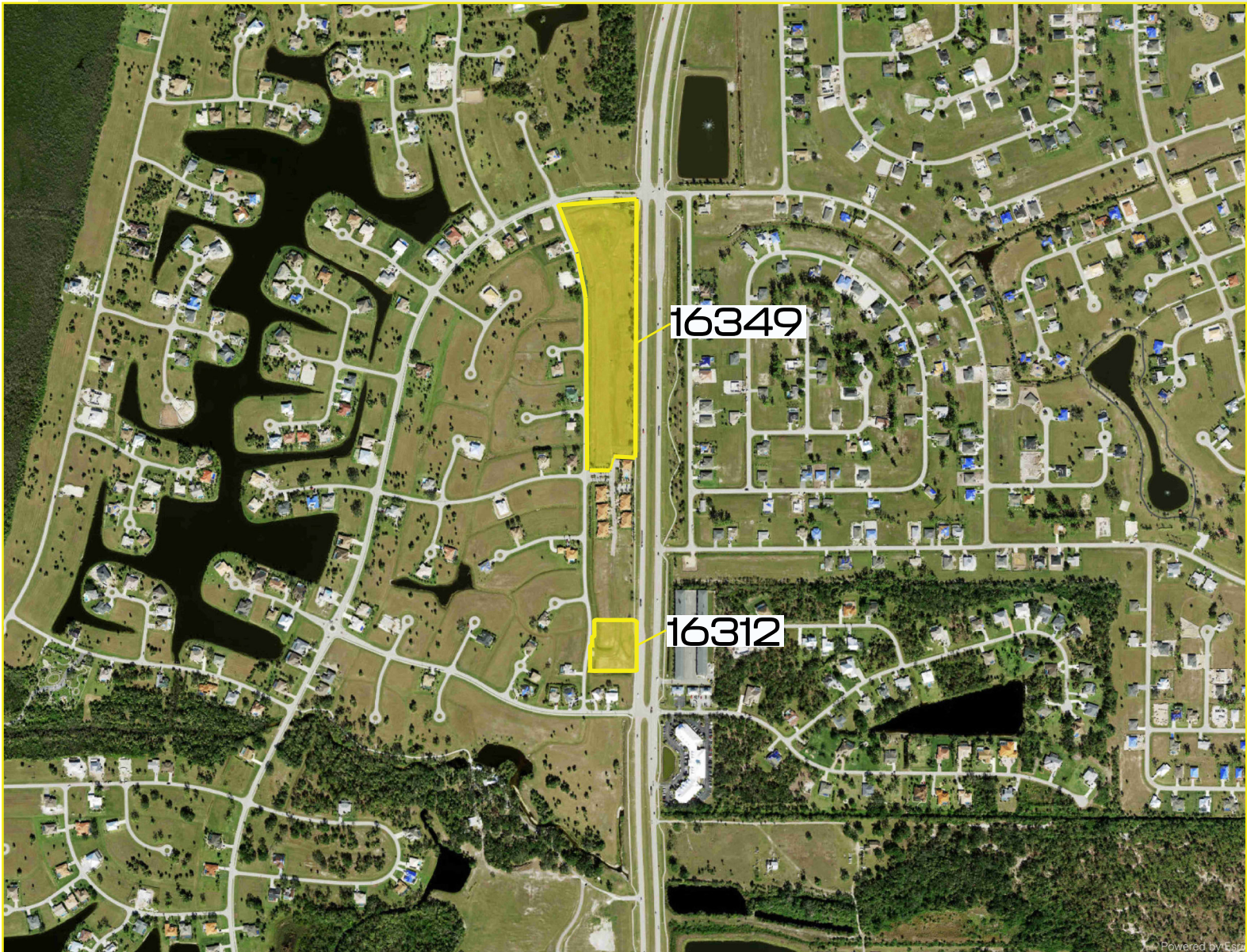


RESIDENTIAL DEVELOPEMENT OPPORTUNITY

16349-16312 SUNSET PALMS BLVD | PUNTA GORDA | 33955



Patrick Fraley, CCIM

Senior Vice President
+1 239-944-6449
Patrick.Fraley@cbre.com

CBRE Inc. | Licensed Real Estate Broker

CBRE

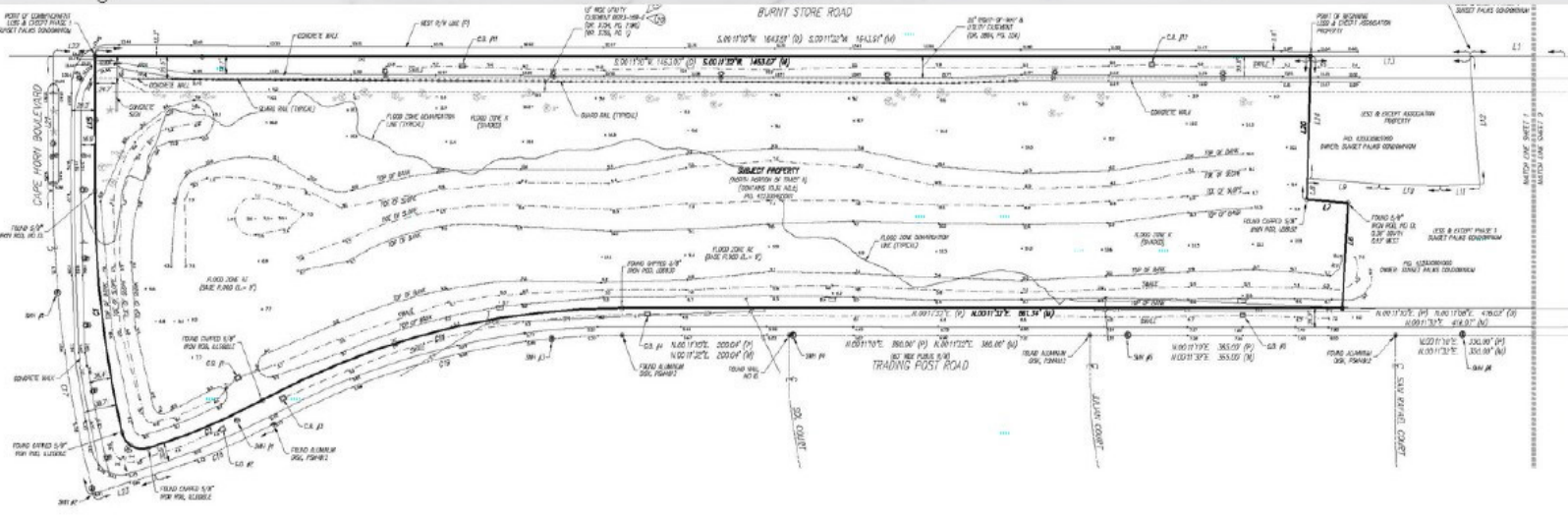
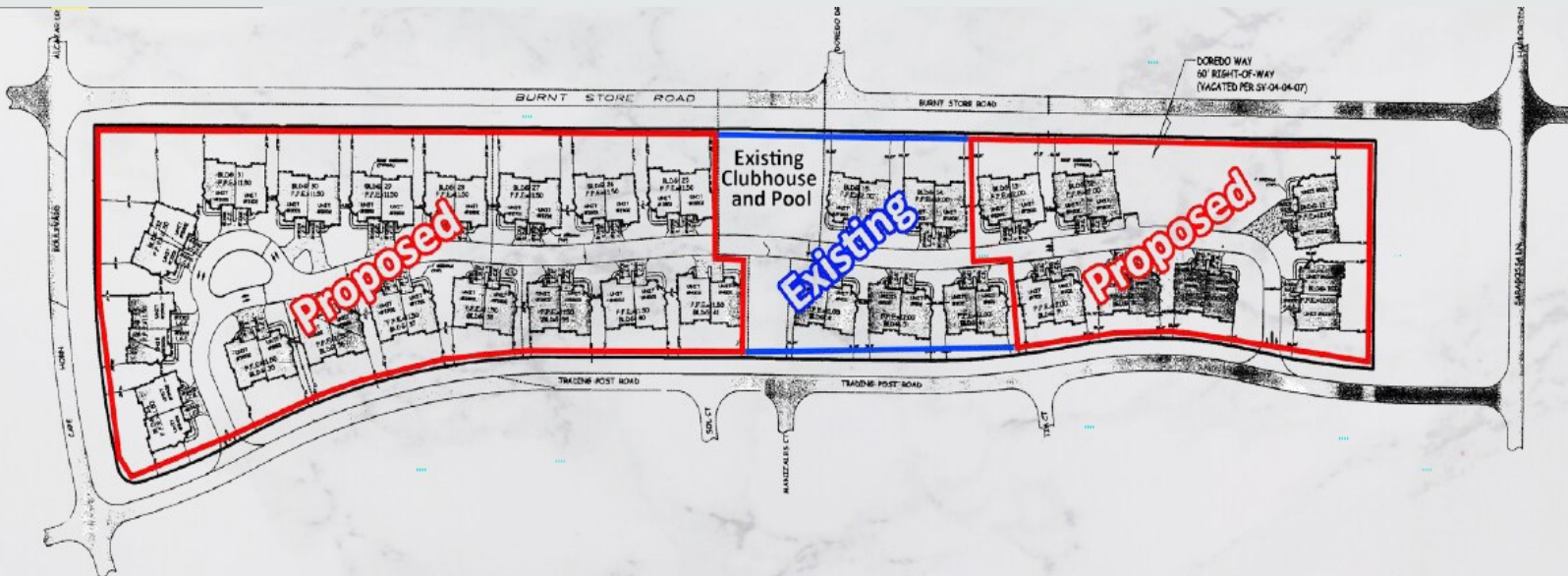
Offering Summary

Prime Residential Development Opportunity In Fast Growing Punta

Rare development opportunity to build 87 attached villa units in one of Southwest Florida's fastest-growing markets. Offered at just \$35,000 per unit, this shovel-ready site has all required site work and fill already completed.

Utilities are stubbed to the southern half of the property, significantly reducing upfront costs and accelerating the development timeline. Supported by strong residential demand and a strategic location, this property is ideally positioned for a

- + PRICE: \$2,950,000
- + PROPERTY SIZE: 15.35 ACRES
- + ZONING: RMF15
- + \$35,000 PER UNIT
- + 87 UNTIS



RESIDENTIAL DEVELOPEMENT OPPORTUNITY

16349-16312 SUNSET PALMS BLVD PUNTA GORDA, FL



Description

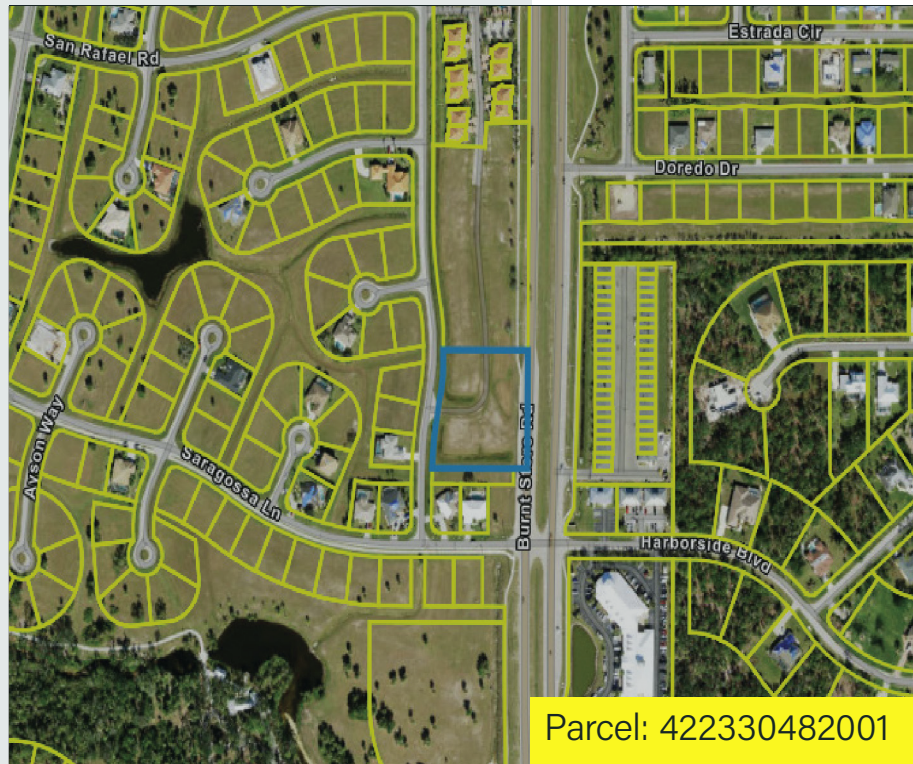
PGI 021 0000 00TAN

Zoning

RMF15

Units

58



Description

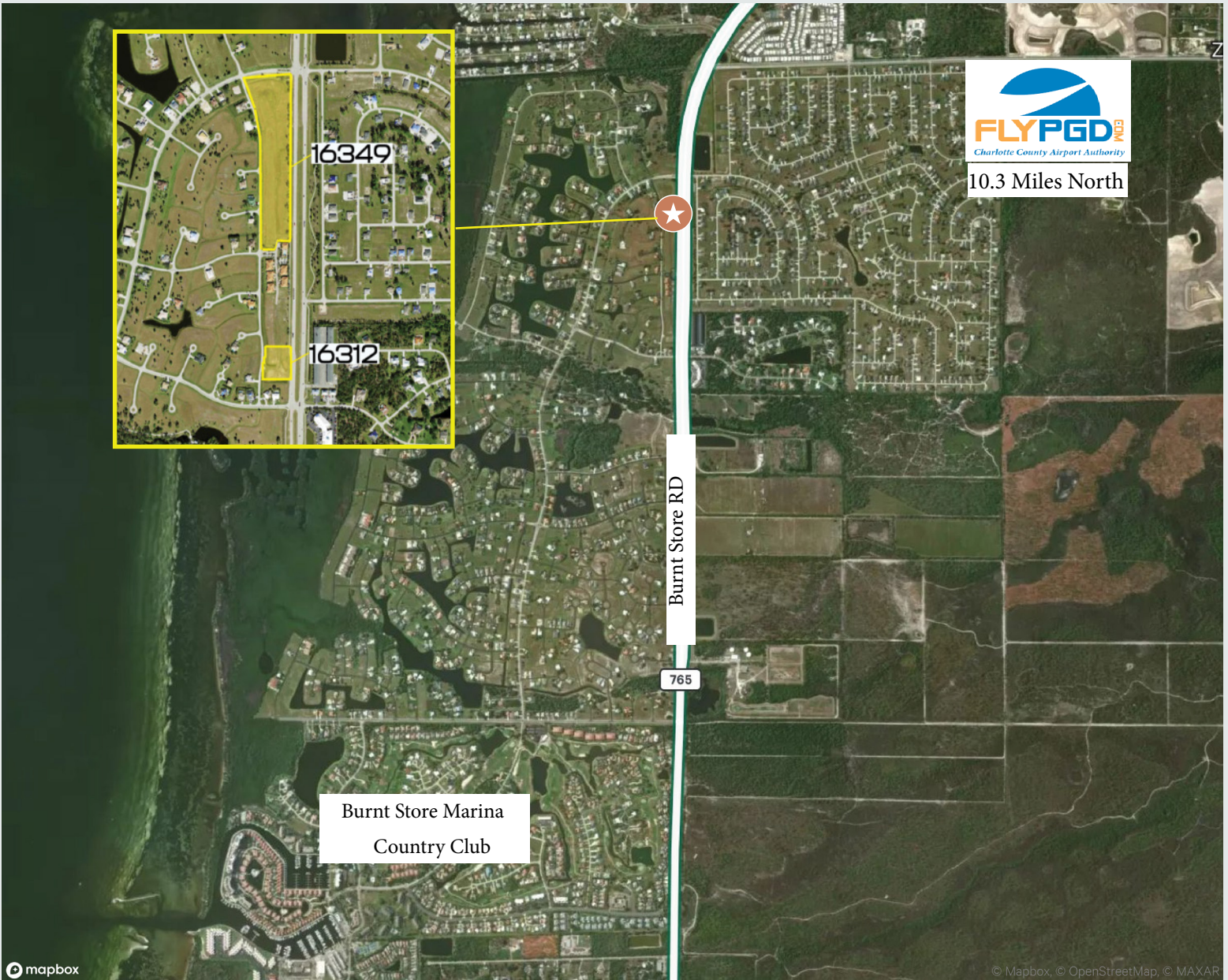
PGI 021 0000 00TB

Zoning

RMF15

Units

10



CONTACT

PATRICK FRALEY

Senior Vice President
C +1 239-944-6449
Patrick.Fraley@cbre.com

CBRE, Inc. | Licensed Real Estate Broker



© 2026 CBRE, Inc. All rights reserved. This information has been obtained from sources believed reliable but has not been verified for accuracy or completeness. CBRE, Inc. makes no guarantee, representation or warranty and accepts no responsibility or liability as to the accuracy, completeness, or reliability of the information contained herein. You should conduct a careful, independent investigation of the property and verify all information. Any reliance on this information is solely at your own risk. CBRE and the CBRE logo are service marks of CBRE, Inc. All other marks displayed on this document are the property of their respective owners, and the use of such marks does not imply any affiliation with or endorsement of CBRE. Photos herein are the property of their respective owners. Use of these images without the express written consent of the owner is prohibited.