



BUILDING INFO

50,000-square-foot industrial building built in 1994

Zoned ML; Ample parking; 21' clear

Located in the heart of the BWI corridor, less than one mile from the intersection of Route 32 and Route 1

HIGHLIGHTS

- Suite 119-121: 8,111 SF condo
- NOI = \$97,494.20
- Long-term tenant in place through 3/31/2029 with renewal option through 3/31/2032



FOR MORE INFORMATION PLEASE CONTACT:

Ned Brady

443-330-4804 | nbrady@blueobrecht.com

Eric Skogmo

443-330-4803 | eskogmo@blueobrecht.com



[instagram.com/blueobrecht](https://www.instagram.com/blueobrecht)



[linkedin.com/company/blue&obrecht](https://www.linkedin.com/company/blue&obrecht)

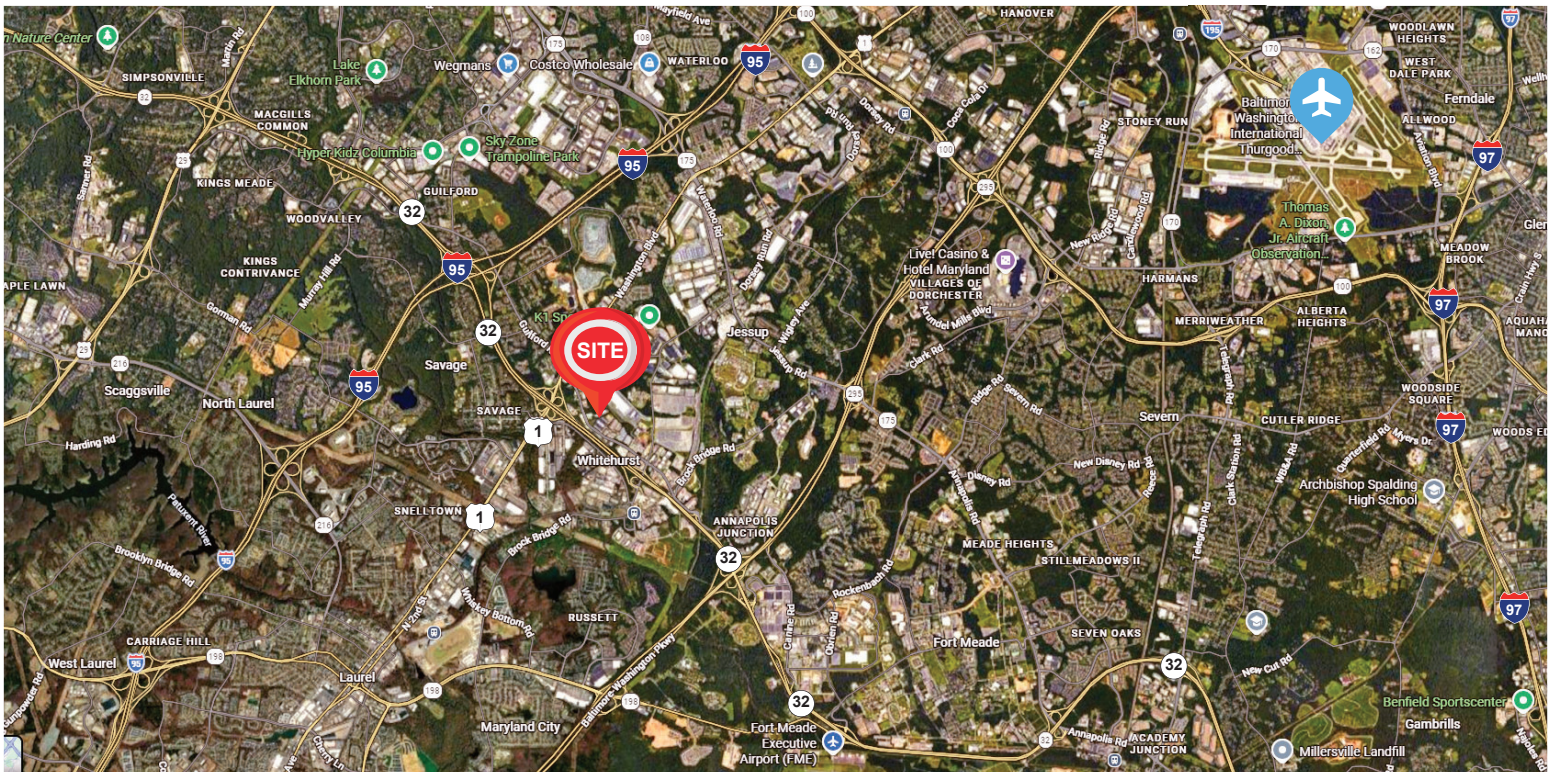
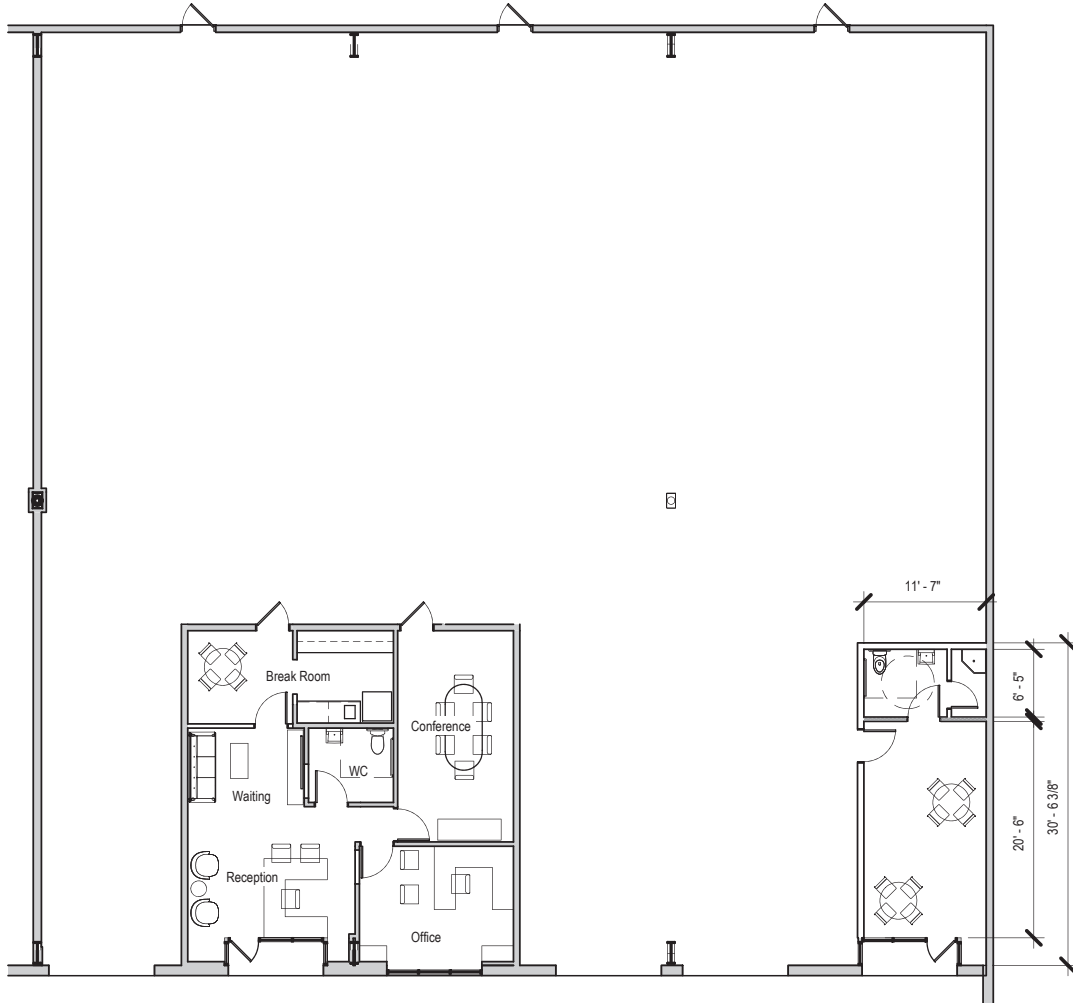


www.blueobrecht.com



410-561-5568

10555 GUILFORD ROAD FLEX CONDO FOR SALE



Information is from sources deemed reliable, but no warranty or representation is made to the accuracy thereof. Information is submitted subject to errors, omissions, prior sale, or lease withdrawal without notice.