

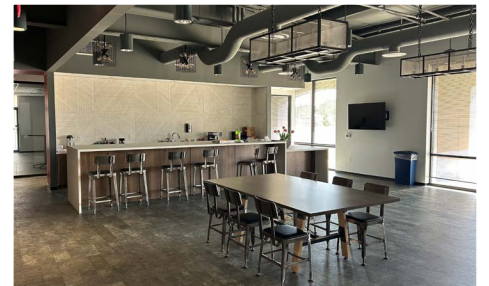
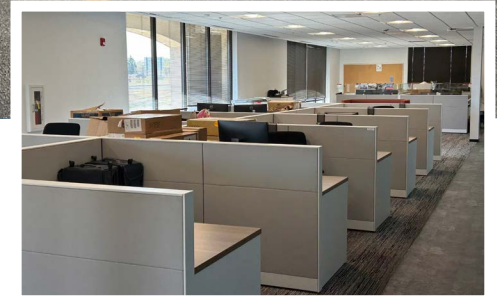
For Lease

6,000-14,400 SF

506 W. Anthony Drive
Champaign, Illinois 61822

PROPERTY HIGHLIGHTS

- Availability: Immediate
- Zoning: C-G
- Year Built: 1978
- Ideal office / showroom / training rooms with warehouse serviced by grade level drive in door
- Frontage on I-74 with tremendous signage potential
- Located between Prospect and Neil, adjacent to Sullivan Parkhill (Leman Automotive) and Ashley Furniture
- Surrounding properties include an array of hotels, apartments, retail, restaurants and car dealerships
- Broker has an ownership interest in this property



Contact

Steve Sullivan
+1 847 610 0123
ssullivan@hiffman.com

One Oakbrook Terrace
Suite 400
Oakbrook Terrace, Illinois 60181
+1 630 932 1234

hiffman.com