



1150 South Olive Street

Opening Winter 2019

wework

Modern Offices in the Heart of DTLA

Total Sq. ft

590,000

WeWork Sq. ft

59,222

Floors

3

Overview

1150 S. Olive St.—built in 1963 and renovated in 2007—is in Downtown Los Angeles’ rapidly changing Southpark neighborhood.. Whether you work in Entertainment or Finance, it’s a convenient meeting ground for business travelers and locals alike.

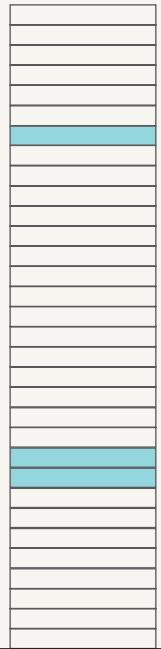
The ever-evolving DTLA brings adaptive reuse and commercial class A buildings together. As the energetic core of the sprawling city, the area is home to the Staples Center, LA Convention Center & LA Live. New luxury condo towers surround LA historic landmarks, making this area the ideal mix of business and pleasure—whether you’re catching a Lakers game or hitting a trendy new restaurant.



Building Amenities

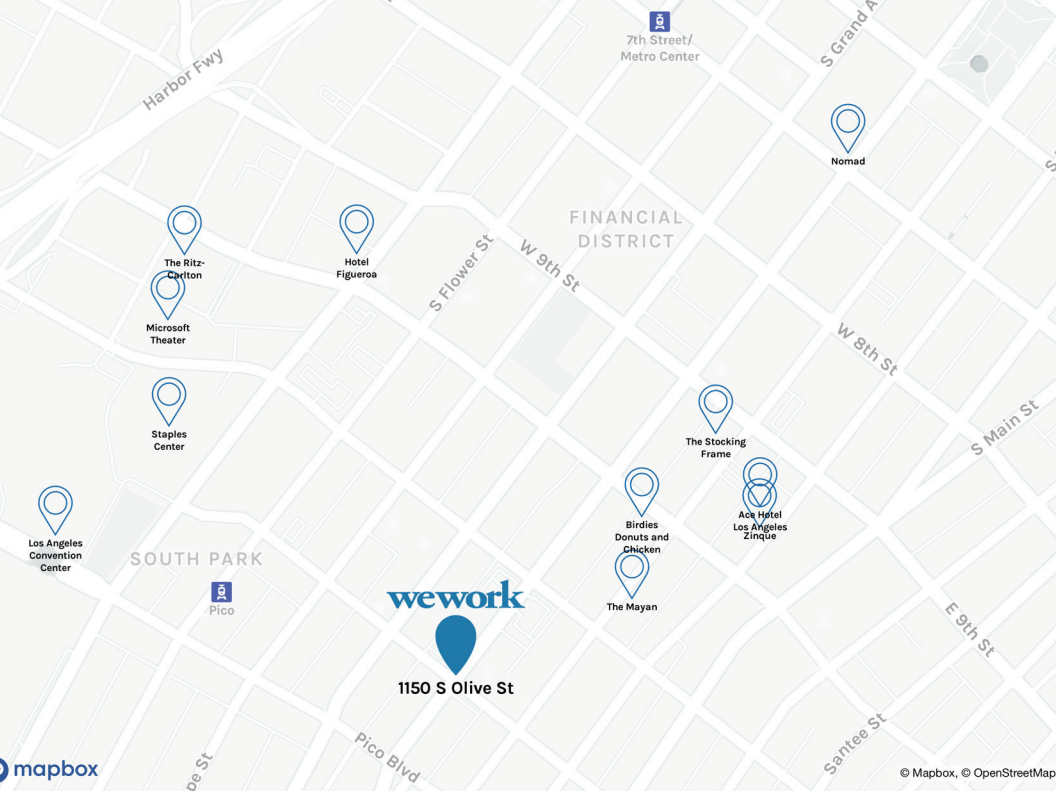
In addition to WeWork's full suite of amenities and perks—from super-fast WiFi to 24/7 security—1150 S. Olive St. tenants also have access to the building's unique amenities like parking, an outdoor space, wellness room, and an in-building food court. Looking for something in particular? Our onsite staff members will be sure to point tenants in the right direction.

3 Floors



1150 South Olive Street
Los Angeles, CA 90014

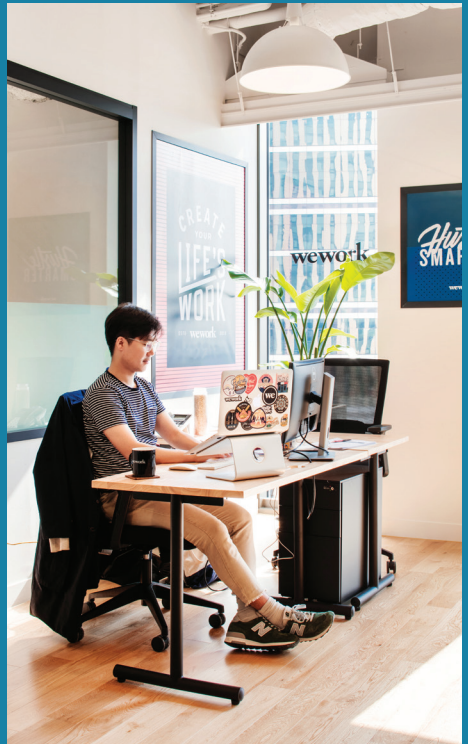




Location

Nearby Transportation

- Pico Station** 0.3 mi
(LA Metro Rail, Blue, Expo Lines)
- Grand Station** 0.7 mi
(LA Metro Rail, Blue Line)
- 7th Street/Metro Center** 0.9 mi
(LA Metro Rail, Blue, Expo, Purple, Red Lines)
- Pershing Square Station** 1.0 mi
(LA Metro Rail, Purple, Red Lines)
- Union Station** 2.4 mi
(Commuter Rail, Regional Commuter lines)
- Cal State LA** 6.4 mi
(Commuter Rail, San Bernardino Line)



Floor Plans

Floor 09

20,138 sq ft



Floor 10

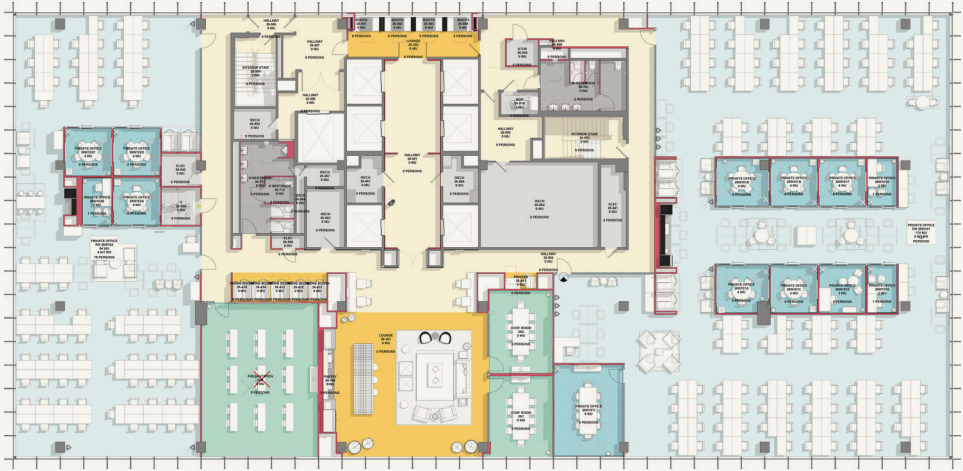
20,138 sq ft



Floor Plans

Floor 26

18,946 sq ft





1150 South Olive Street

1150 South Olive Street
Los Angeles, CA 90014
[wework.com](https://www.wework.com)

wework