



KEY FEATURES

- 9,000 SQ FT Warehouse/Office
- Clean and in Great Shape
- 2 Divisible spaces
- Gated Private Yard
- 22 Ft Clear Height
- Polished Concrete Floors
- 400 AMP Power



6638 DOOLITTLE ST RIVERSIDE, CA 92503

CONTACT:

Hector Lopez
Managing Director
213-700-8831
hectorlopez@remax.net
DRE #01862220

Fernando Carmona
Industrial & Investment
909-568-8474
fcarmona.remax@gmail
DRE#01503578



CONTACT:

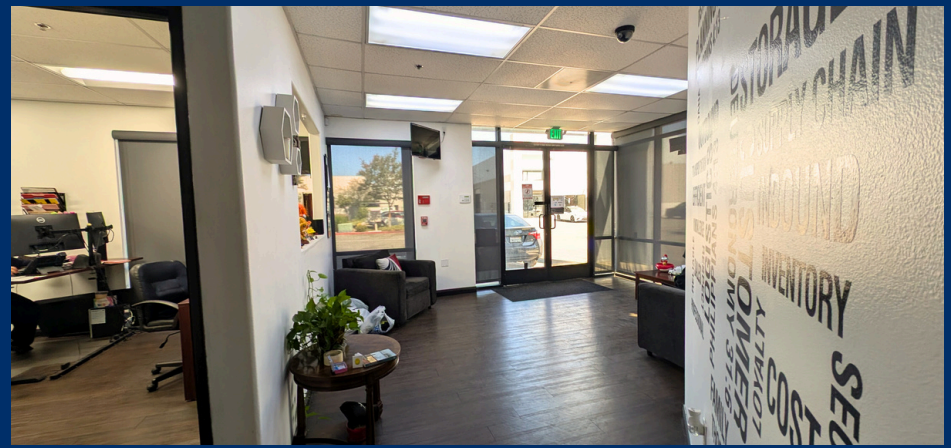
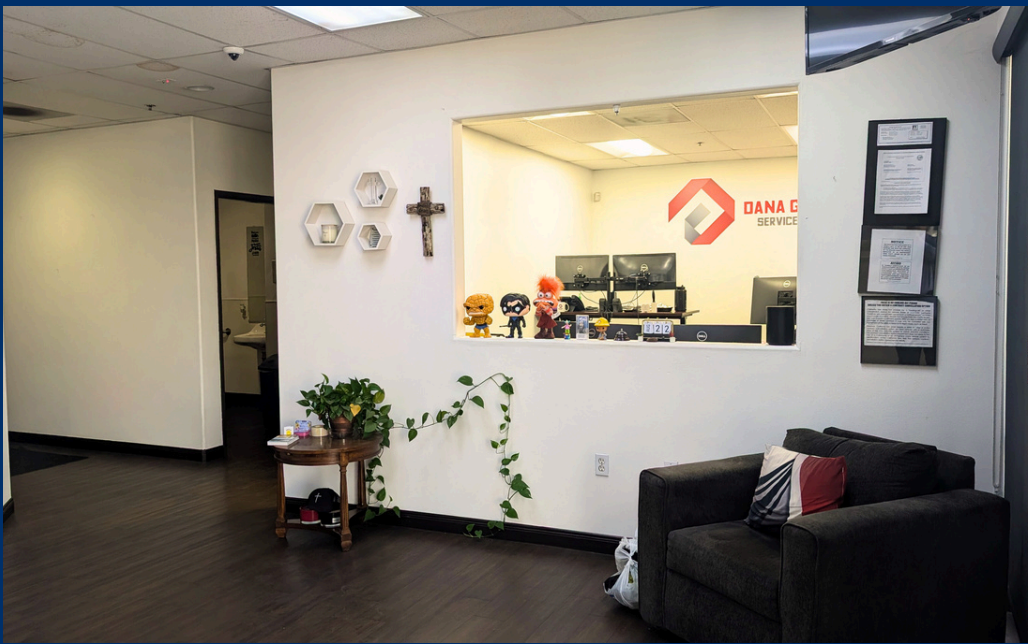
Hector Lopez
Managing Director
213-700-8831
hectorlopez@remax.net
DRE #01862220

Fernando Carmona
Industrial & Investment
909-568-8474
fcarmona.remax@gmail
DRE#01503578

THIS INFORMATION HAS BEEN SECURED FROM SOURCES WE BELIEVE TO BE RELIABLE. BUT WE MAKE NO REPRESENTATIONS OR GUARANTEES, EXPRESSED OR IMPLIED, AS TO THE ACCURACY OF THE INFORMATION. REFERENCES TO SQUARE FOOTAGE OR AGE ARE APPROXIMATE. BUYER MUST VERIFY THE INFORMATION AND BEARS ALL RISK FOR ANY INACCURACIES.

REMAX MASTERS 14760 PIPELINE AVE, CHINO HILLS, CA 91709





CONTACT:

Hector Lopez
 Managing Director
 213-700-8831
 hectorlopez@remax.net
 DRE #01862220

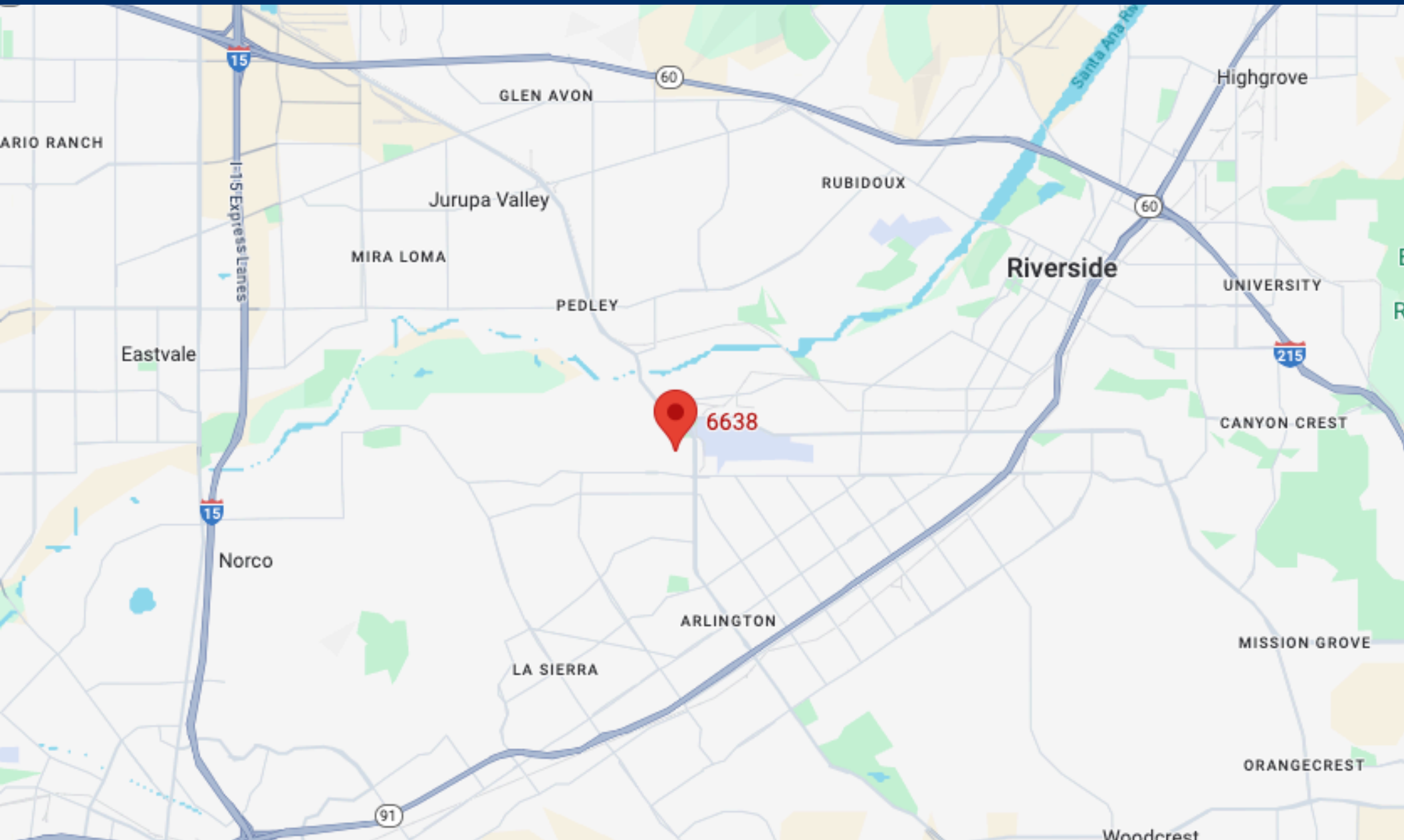
Fernando Carmona
 Industrial & Investment
 909-568-8474
 fcarmona.remax@gmail
 DRE#01503578

THIS INFORMATION HAS BEEN SECURED FROM SOURCES WE BELIEVE TO BE RELIABLE. BUT WE MAKE NO REPRESENTATIONS OR GUARANTEES, EXPRESSED OR IMPLIED, AS TO THE ACCURACY OF THE INFORMATION. REFERENCES TO SQUARE FOOTAGE OR AGE ARE APPROXIMATE. BUYER MUST VERIFY THE INFORMATION AND BEARS ALL RISK FOR ANY INACCURACIES.

REMAX MASTERS 14760 PIPELINE AVE, CHINO HILLS, CA 91709



MAPS

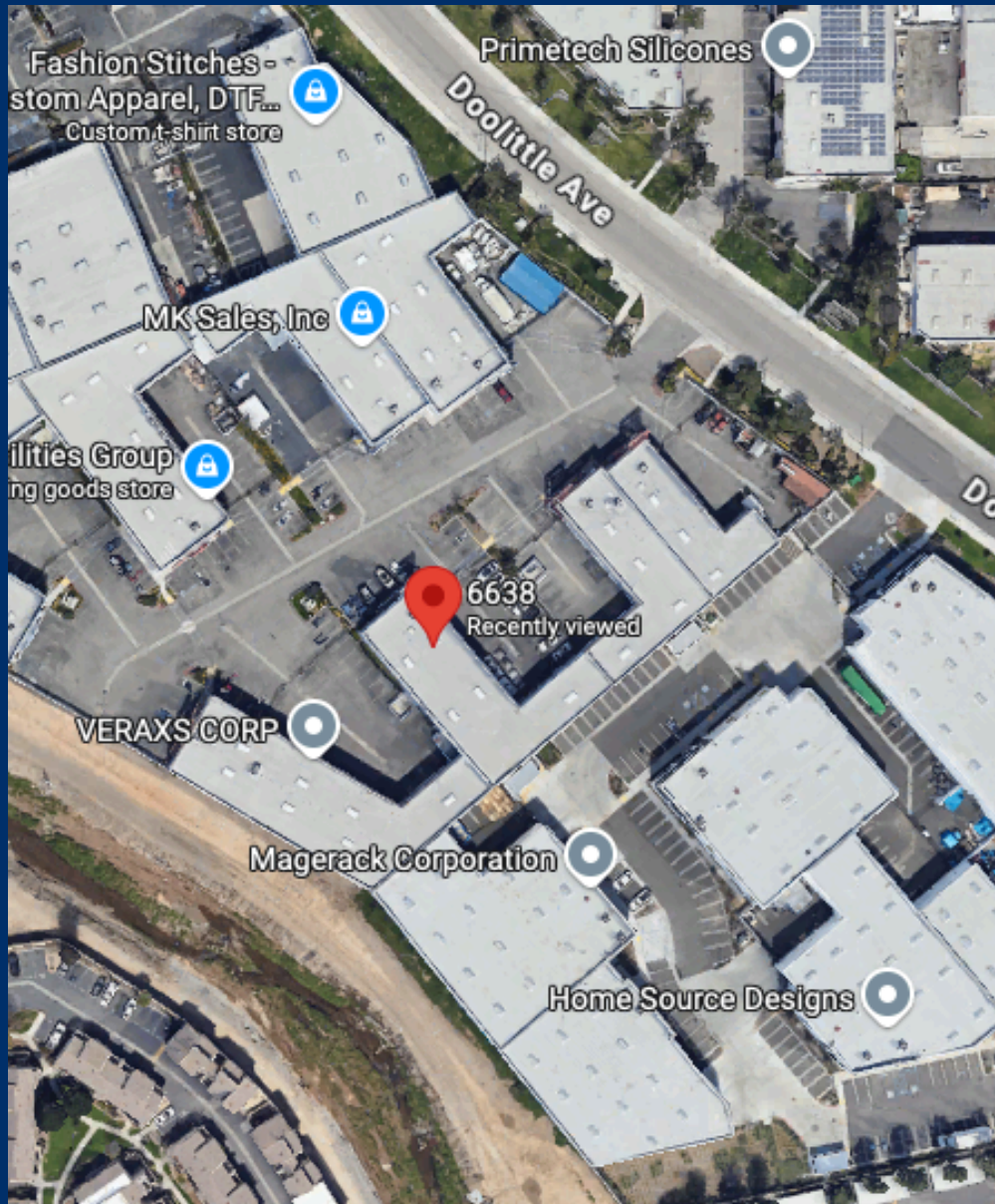


CONTACT:

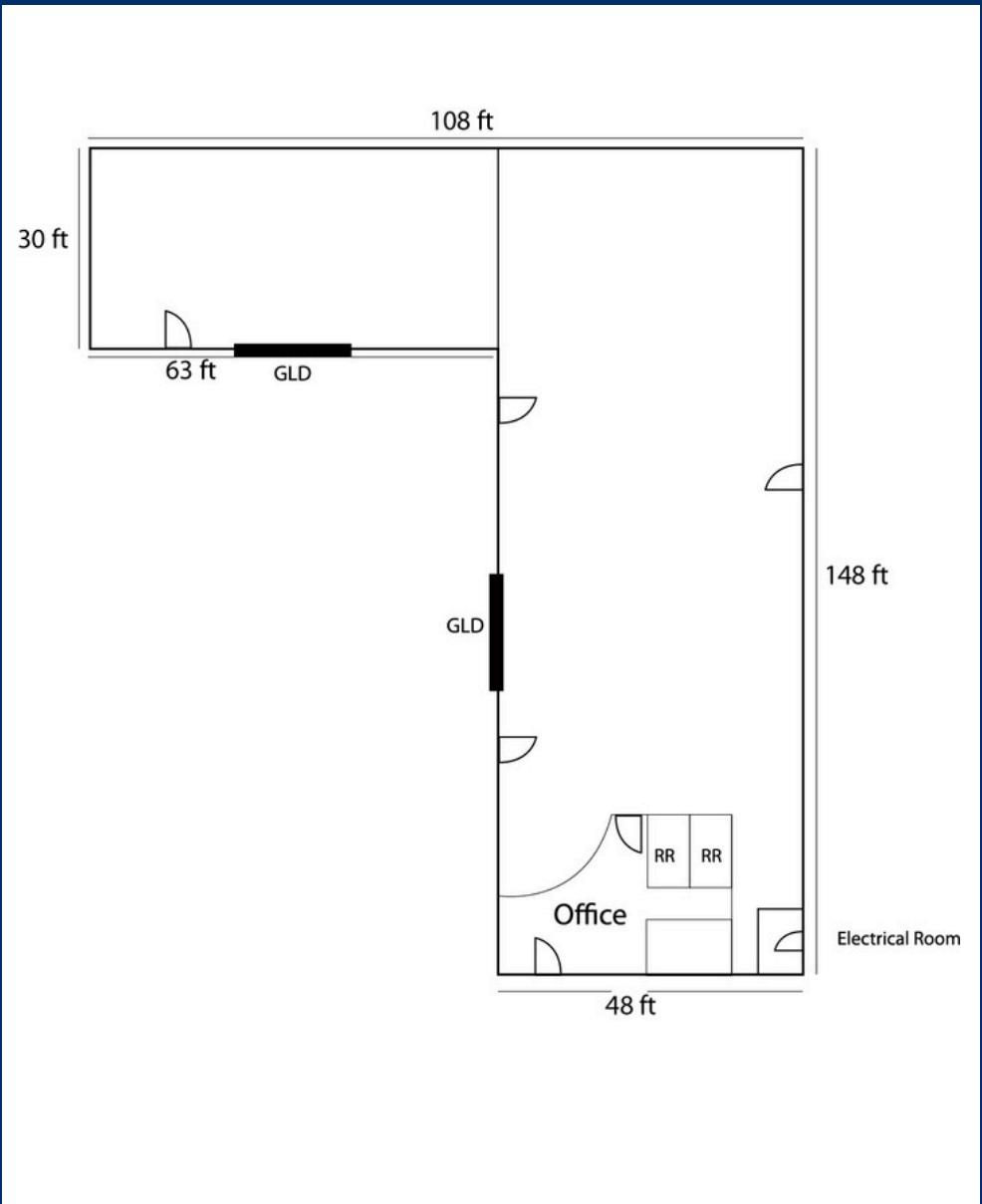
Hector Lopez
Managing Director
213-700-8831
hectorlopez@remax.net
DRE #01862220

Fernando Carmona
Industrial & Investment
909-568-8474
fcarmona.remax@gmail
DRE#01503578

FOOTPRINT



FLOORPLAN



CONTACT:

Hector Lopez
Managing Director
213-700-8831
hectorlopez@remax.net
DRE #01862220

Fernando Carmona
Industrial & Investment
909-568-8474
fcarmona.remax@gmail
DRE#01503578

*NOT TO SCALE



DEMOGRAPHICS

RIVERSIDE, CA

CENSUS PLACE

ADD COMPARISON

2023 POPULATION
316,241
0.0522% 1-YEAR GROWTH

2023 POVERTY RATE
12.5%
1.82% 1-YEAR DECREASE

US SENATOR

Alex Padilla
DEMOCRATIC PARTY

US SENATOR

Adam Schiff
DEMOCRATIC PARTY

2023 MEDIAN AGE
33.1
2.16% 1-YEAR INCREASE

2023 MEDIAN HOUSEHOLD INCOME
\$88,575
6.14% 1-YEAR GROWTH

2023 MEDIAN PROPERTY VALUE
\$542,100
11.7% 1-YEAR GROWTH

2023 EMPLOYED POPULATION
152,270
1.43% 1-YEAR GROWTH

FOR FULL DETAILED DEMOGRAPHICS: [HTTPS://DATAUSA.IO/PROFILE/GEO/ONTARIO-CA](https://datausa.io/profile/geo/ontario-ca)

Occupations

All

Workforce

Value

152k
2023 VALUE
± 3,189

1.43%
1 YEAR GROWTH
± 2.95%

From 2022 to 2023, employment in Riverside, CA grew at a rate of 1.43%, from 150k employees to 152k employees.

The most common job groups, by number of people living in Riverside, CA, are Office & Administrative Support Occupations (18,209 people), Sales & Related Occupations (14,400 people), and Management Occupations (11,076 people). This chart illustrates the share breakdown of the primary jobs held by residents of Riverside, CA.

Data from the Census Bureau ACS 5-year Estimate



2013 2014 2015 2016 2017 2018 2019 2020 2021 2022 2023

CONTACT:

Hector Lopez
Managing Director
213-700-8831
hectorlopez@remax.net
DRE #01862220

Fernando Carmona
Industrial & Investment
909-568-8474
fcarmona.remax@gmail.com
DRE#01503578

