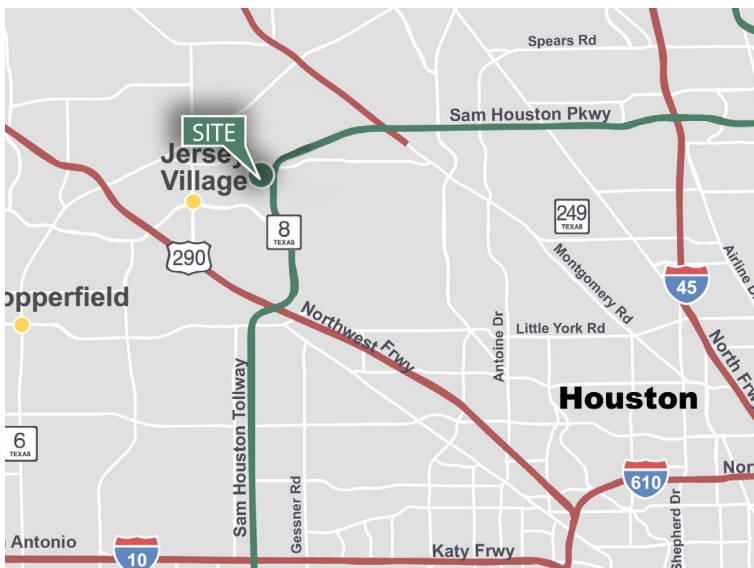


28,080 SF

10305 Round Up Ln, Suite 700
Houston, TX 77064

Prologis Round Up 1



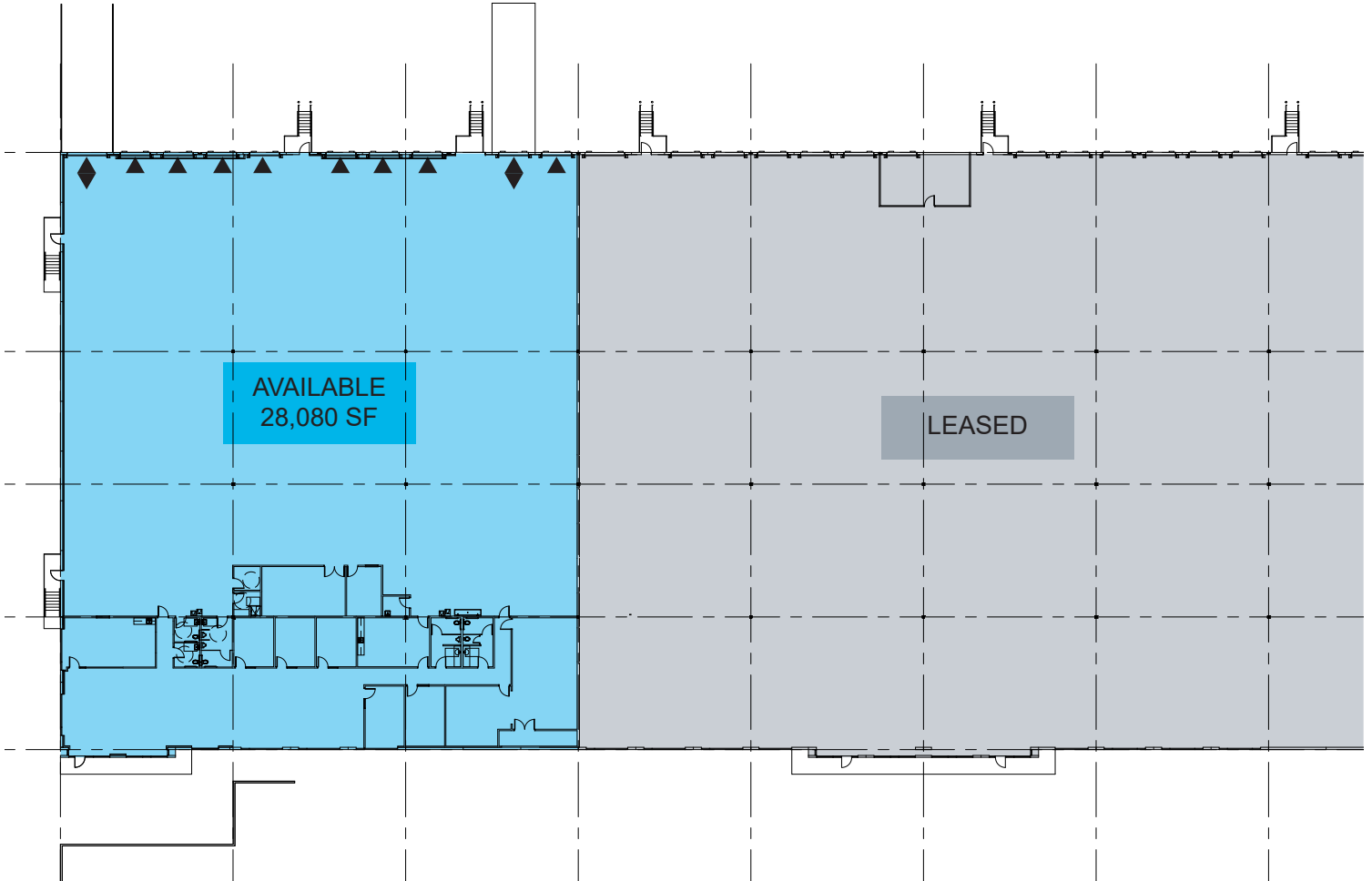
- Located immediately off of Beltway 8
- Direct access to Hwy 290 and Hwy 249
- Excellent Northwest location in deed-restricted business park.
- Double Freeport Tax Exemption for qualified user

Property Features

Available Space	28,080 SF
Office SF	6,350 SF
Clear Height	24'
Column Spacing	52' x 40'
Dock Doors	8
Dock Levelers	1 pit leveler
Drive-in Doors	2
Electrical Services	2,000 amps
Sprinkler	ESFR
HVAC	Climate-controlled warehouse
Truck Court	125' depth
Building Configuration	Rear load, end cap
Overhead Crane Capability	(2) 20-ton + (3) 10-ton cranes currently in space with potential to remain



Unlock the full potential of your warehouse **with one strategic, single-source partner.**
prologisessentials.com



NEWMARK

Newmark
Brian Booth
brian.booth@nmrk.com
ph +1 713 599 5154
cell +1 949 375 8760

Newmark
Ross James
Ross.James@nmrk.com
cell +1 713 870 7677

Newmark
John Luck
John.Luck@nmrk.com
ph +1 713 499 4110
cell +1 713 385 7057

Prologis
Ryan Patronella
rpatronella@prologis.com
ph +1 713 613 6966
cell +1 832 671 1550
prologis.com