



FOR LEASE: RITZ GARDEN PLAZA

265 San Jacinto River Road, Lake Elsinore, CA

Property Information

- **Multi-Tenant Professional Building**
- **Zoned C-2, General Commercial (City of Lake Elsinore)**
- Suitable for a variety of uses such as medical office, professional services, or retail
- Centrally located off of Interstate 15 at Diamond Drive
- Mature landscaping
- Private, fenced parking lot
- Monument signage available
- Exterior Building Signage Opportunity

- **Suites from +/-745 to +/-4,326 SF**
- **Lease Rate: starting at \$1.85/SF, MG**



More Information: Christopher J. Masino, SIOR
(951) 795-4556

41707 Winchester Rd | Suite 300 | Temecula | CA | 92590

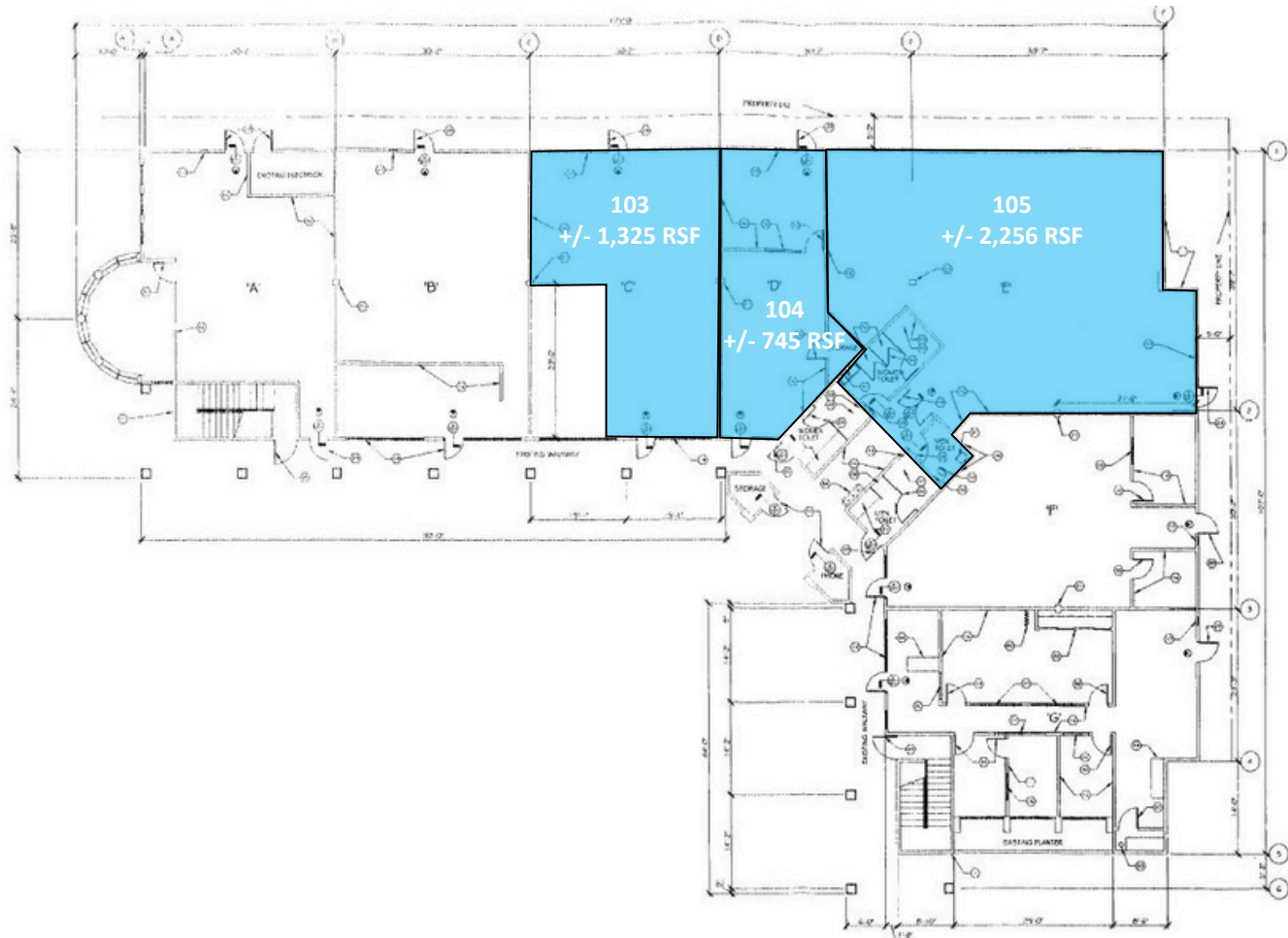
The information contained herein has been obtained from a variety of sources and Masino Commercial, its agents, representatives and property owner make no warranty or representation regarding its accuracy or completeness. The delivery of this information does not constitute an offer and no transaction shall be considered binding until sales or lease agreement has been fully executed by all parties.



FOR LEASE: RITZ GARDEN PLAZA

265 San Jacinto River Road, Lake Elsinore, CA

1st Floor Plan



More Information: Christopher J. Masino, SIOR
(951) 795-4556

41707 Winchester Rd | Suite 300 | Temecula | CA | 92590

The information contained herein has been obtained from a variety of sources and Masino Commercial, its agents, representatives and property owner make no warranty or representation regarding its accuracy or completeness. The delivery of this information does not constitute an offer and no transaction shall be considered binding until sales or lease agreement has been fully executed by all parties.



FOR LEASE: RITZ GARDEN PLAZA

265 San Jacinto River Road, Lake Elsinore, CA

Lease Rates

Suite	Square Feet	*Lease Rate/Mo.
103	1,325	\$2,477.75
104	745	\$1,408.05
105	2,256	\$4,173.60
103-104	2,070	\$3,885.80
103-104-105	4,326	\$8,059.40
*Modified Gross, plus utilities and in-suite janitorial		
Updated:	6/8/2026	

More Information: Christopher J. Masino, SIOR
(951) 795-4556

41707 Winchester Rd | Suite 300 | Temecula | CA | 92590

The information contained herein has been obtained from a variety of sources and Masino Commercial, its agents, representatives and property owner make no warranty or representation regarding its accuracy or completeness. The delivery of this information does not constitute an offer and no transaction shall be considered binding until sales or lease agreement has been fully executed by all parties.



FOR LEASE: RITZ GARDEN PLAZA

265 San Jacinto River Road, Lake Elsinore, CA

Selected Images



Private, Fenced Parking Lot



Mature Landscaping

More Information: Christopher J. Masino, SIOR
(951) 795-4556

41707 Winchester Rd | Suite 300 | Temecula | CA | 92590

The information contained herein has been obtained from a variety of sources and Masino Commercial, its agents, representatives and property owner make no warranty or representation regarding its accuracy or completeness. The delivery of this information does not constitute an offer and no transaction shall be considered binding until sales or lease agreement has been fully executed by all parties.



FOR LEASE: RITZ GARDEN PLAZA

265 San Jacinto River Road, Lake Elsinore, CA

Selected Images



Aerial View to North



Aerial View to East

More Information: Christopher J. Masino, SIOR
(951) 795-4556

41707 Winchester Rd | Suite 300 | Temecula | CA | 92590

The information contained herein has been obtained from a variety of sources and Masino Commercial, its agents, representatives and property owner make no warranty or representation regarding its accuracy or completeness. The delivery of this information does not constitute an offer and no transaction shall be considered binding until sales or lease agreement has been fully executed by all parties.



FOR LEASE: RITZ GARDEN PLAZA

265 San Jacinto River Road, Lake Elsinore, CA

Location Information



More Information: Christopher J. Masino, SIOR
(951) 795-4556

41707 Winchester Rd | Suite 300 | Temecula | CA | 92590

The information contained herein has been obtained from a variety of sources and Masino Commercial, its agents, representatives and property owner make no warranty or representation regarding its accuracy or completeness. The delivery of this information does not constitute an offer and no transaction shall be considered binding until sales or lease agreement has been fully executed by all parties.