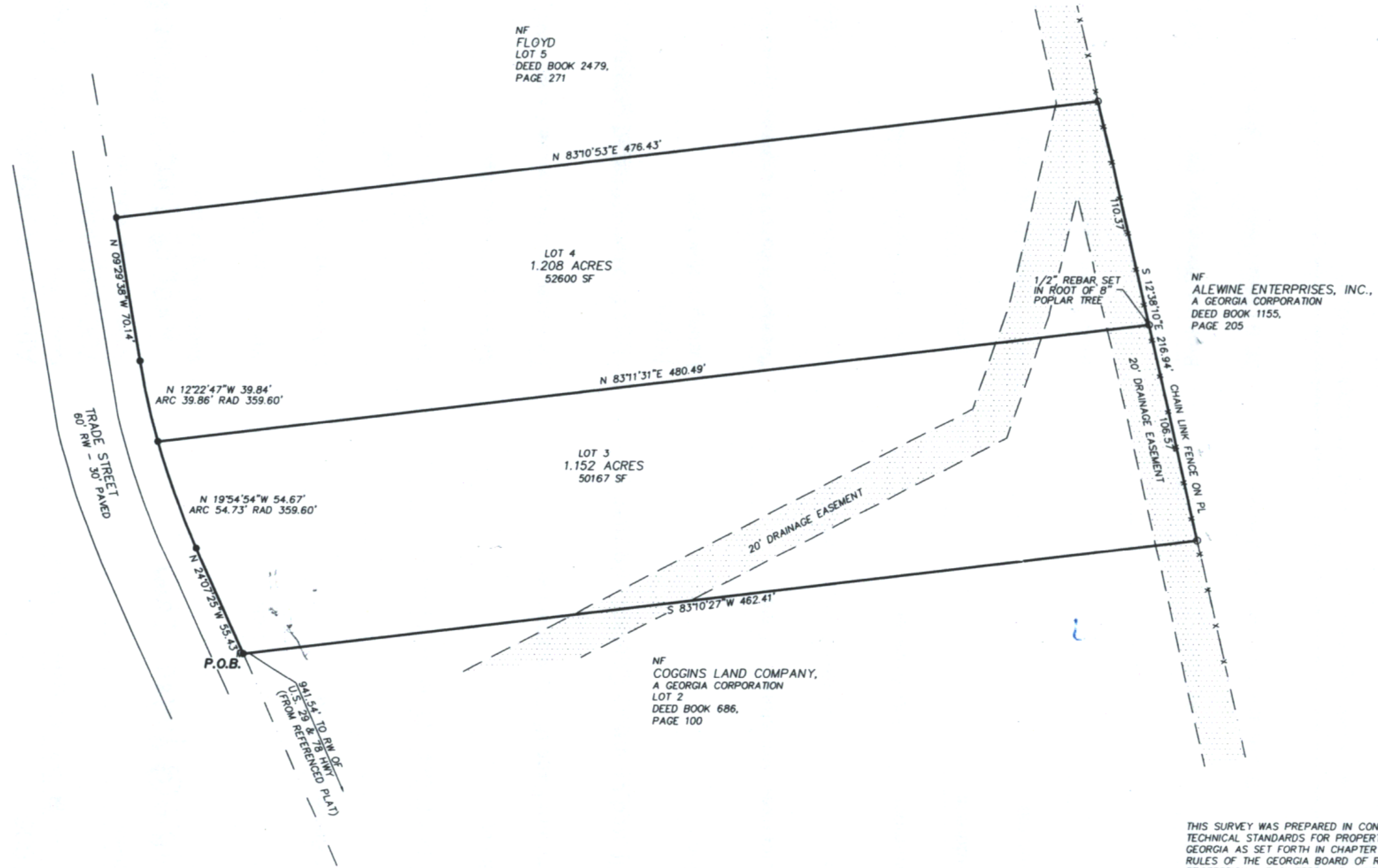


MAGNETIC NORTH

LEGEND

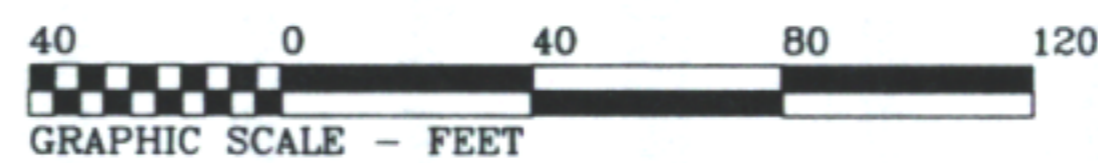
- IPS 1/2" REBAR
- IPF 1/2" REBAR (UNLESS NOTED)
- ⊙ COMPUTED POINT ONLY
- ⊠ CONCRETE R/W MONUMENT
- SQUARE ROD
- OPEN TOP PIPE
- ⊙ POWER POLE
- OVERHEAD ELECTRIC LINE
- X— CHAIN-LINK FENCE
- //— FENCE LINE (TYPE AS NOTED)



NF
FLOYD
LOT 5
DEED BOOK 2479,
PAGE 271

NF
ALEWINE ENTERPRISES, INC.,
A GEORGIA CORPORATION
DEED BOOK 1155,
PAGE 205

NF
COGGINS LAND COMPANY,
A GEORGIA CORPORATION
LOT 2
DEED BOOK 686,
PAGE 100



THIS SURVEY WAS PREPARED IN CONFORMITY WITH THE TECHNICAL STANDARDS FOR PROPERTY SURVEYS IN GEORGIA AS SET FORTH IN CHAPTER 180-7 OF THE RULES OF THE GEORGIA BOARD OF REGISTRATION FOR PROFESSIONAL ENGINEERS AND LAND SURVEYORS AND AS SET FORTH IN THE GEORGIA PLAT ACT O.C.G.A. 15-6-67
THIS PLAT IS RECORDABLE IN ACCORDANCE WITH O.C.G.A. 15-6-67(d).

REFERENCES:
1. DEED BOOK 686, PAGE 100
2. PLAT BOOK 19, PAGE 74

NOTES:
FIELD INFORMATION FOR THIS SURVEY WAS OBTAINED WITH A 5 SECOND THEODOLITE AND AN ELECTRONIC DISTANCE METER.
THE FIELD DATA UPON WHICH THIS MAP OR PLAT IS BASED HAS A CLOSURE PRECISION OF ONE FOOT IN 31,102 FEET AND AN ANGULAR ERROR OF 1 SECOND PER ANGLE POINT AND WAS ADJUSTED BY LEAST SQUARES.
THIS MAP OR PLAT HAS BEEN CALCULATED FOR CLOSURES AND IS FOUND TO BE ACCURATE WITHIN ONE FOOT IN 323,938 FEET.

© 2015 Brett Chandler Surveying & Engineering



SURVEY NOT VALID OR RECORDABLE WITHOUT ORIGINAL SIGNATURE

SURVEY FOR:			
ANDE BURKE			
SURVEYED: 5-27-15	DRAWN: 6-5-15	SCALE: 1"=40'	BY: KJA
DISTRICT: 241st G.M.D.	LOTS 3 & 4 BLOCK A		
COUNTY: CLARKE	ATHENS TRADE CENTER		
STATE OF GEORGIA	120 & 130 TRADE STREET		
	PLAT BOOK 19, PAGE 74		
SURVEY BY:			
CHANDLER SURVEYING & ENGINEERING			
205 CHAPMAN PLACE ATHENS, GA 30606			FIELD BOOK: 69
PHONE: 706.549.7395 FAX: 706.549.7977			15054