

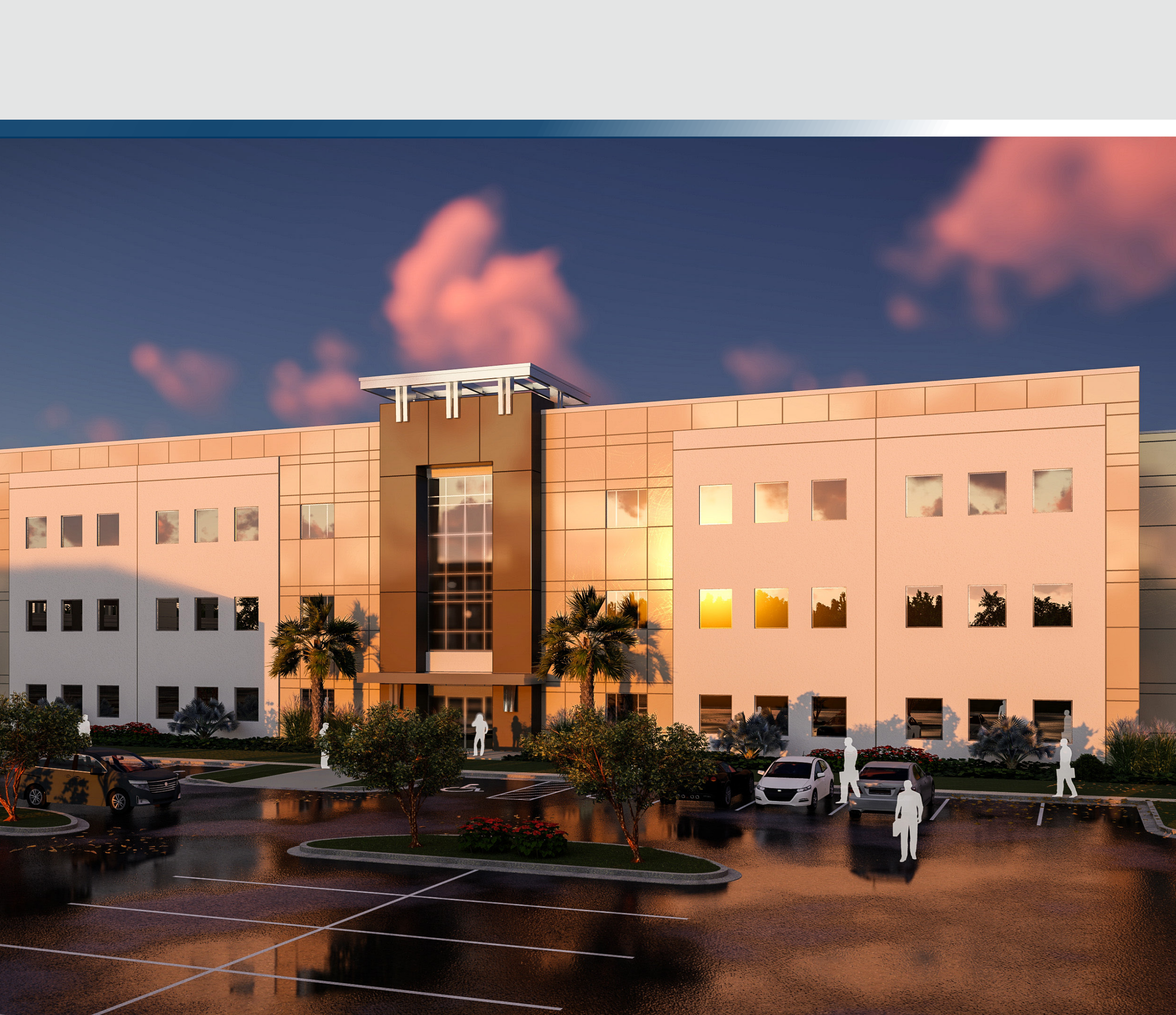
NEW MEDICAL OFFICES | FOR LEASE

THE COMMONS AT ABACOA III

CORPORATE WAY & UNIVERSITY BLVD

JUPITER, FL 33458





THE COMMONS AT ABACOA III

Corporate Way & University Blvd

New Construction with custom floor plans available for medical and office space in the heart of Jupiter. Located just north of Donald Ross Road, adjacent to the bustling community of Abacoa known for its family friendly neighborhoods, retail options, and vast array of dining amenities.

Building Size: ±54,000 SF

Spaces Available From:
±2,000 - ±17,200 SF

Lease Rate: \$33.00/SF/NNN,
plus OPEX




Partial shared equity positions
available for qualified tenants.

PROPERTY HIGHLIGHTS

- Building Signage Available
- From: $\pm 2,000$ SF - $\pm 17,200$ SF
- Full Floor Opportunities
- Ample Surface Parking with 5.00:1,000 SF Ratio
- 3.2 Miles to Jupiter Medical Center
- 1.3 Miles to Interstate 95
- MXD Zoning
- Covered Patient Drop Off
- Generator Pad Ready
- No Use Restrictions



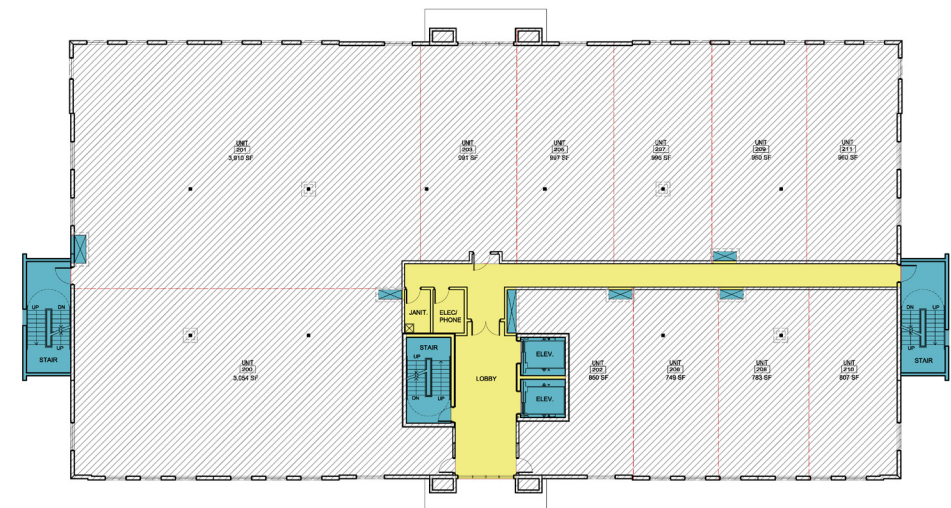
FLOORPLANS

-  BASE BUILDING CIRCULATION
-  MAJOR VERTICAL PENETRATIONS
-  TENANT AREA

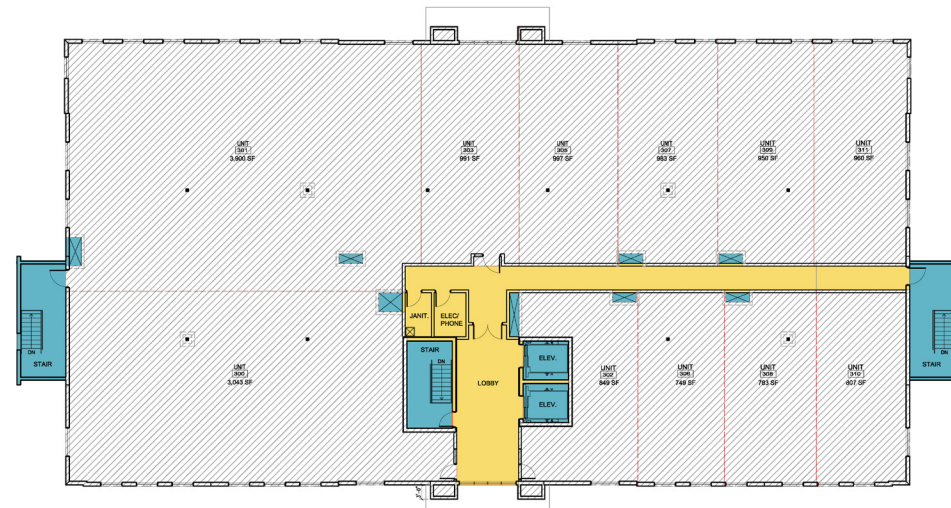
1st Floor



2nd Floor



3rd Floor

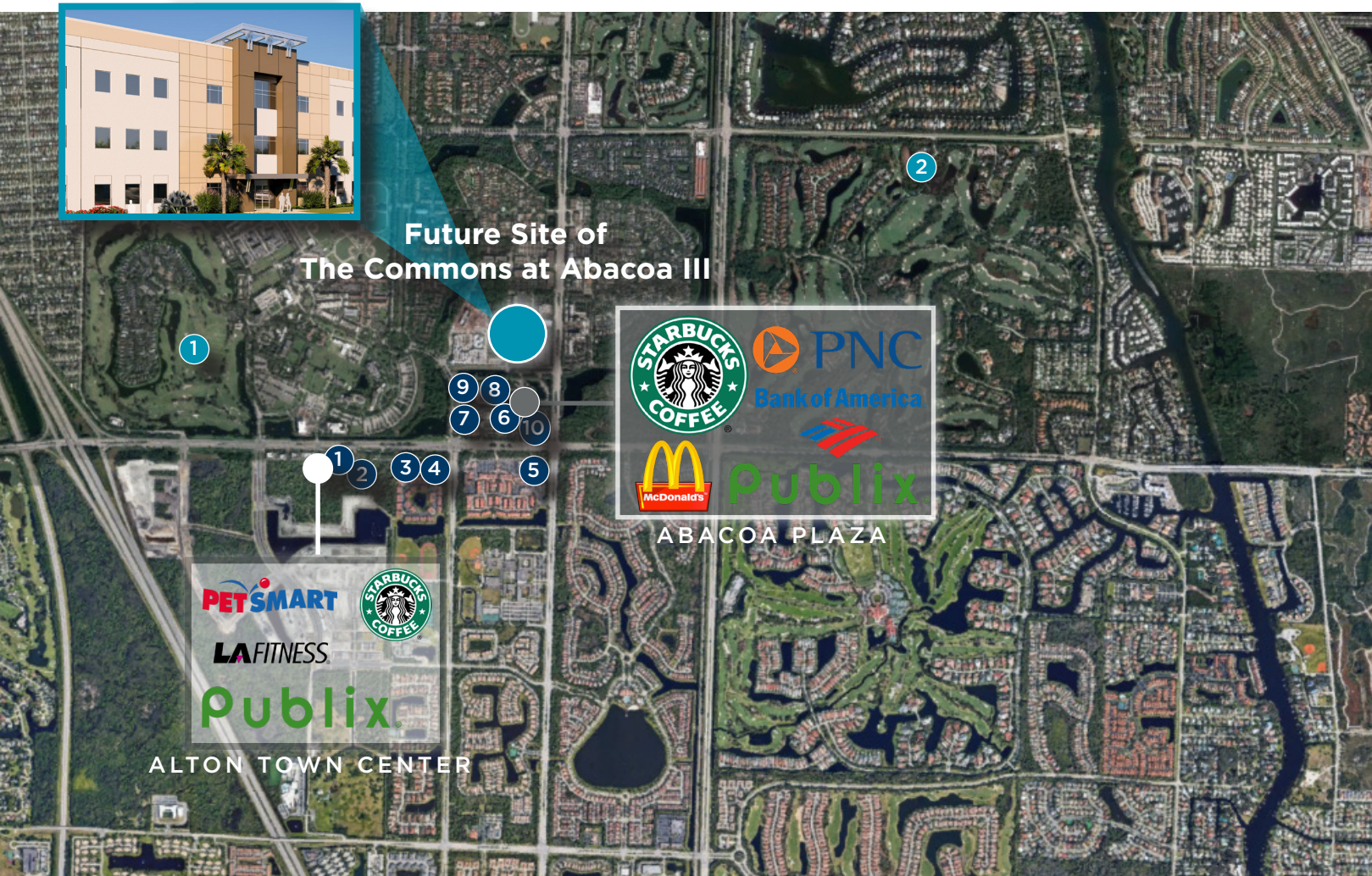


AREA AMENITIES

HOSPITAL MAP



Future Site of The Commons at Abacoa III



ALTON TOWN CENTER

1. Miller's Ale House
2. Domino's Pizza
3. Waxin's
4. Longhorn Steakhouse
5. Lynora's Palm Beach Gardens
6. Chipolte
7. Starbucks
8. Panda Express
9. Panera Bread
10. Bolay

ABACOA PLAZA

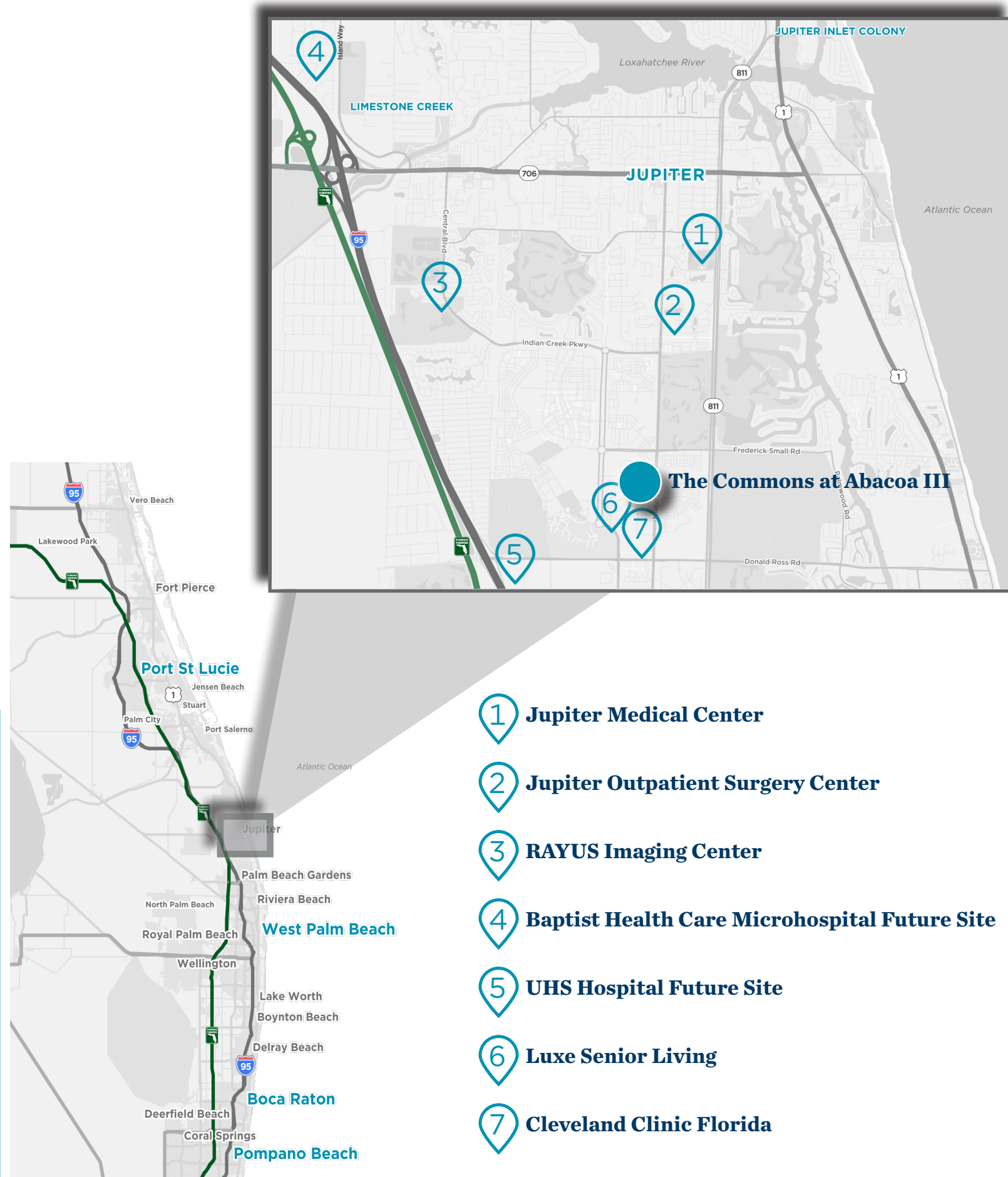
1. McDonald's
2. Starbucks
3. Jersey Mike's Subs
4. Pacncheros Mexican Grill
5. Tropical Smoothie Cafe
6. China Star

GOLF COURSES

1. Abacoa Golf Club
2. Bears Club

RETAIL & BANKING

1. Publix Super Market at Alton Town Center
2. The Home Depot
3. Chase Bank
4. Walgreens
5. CVS
6. Bank of America
7. PNC Bank
8. Publix Super market at Abacoa Plaza
9. Truist
10. Marathon Gas



1. Jupiter Medical Center
2. Jupiter Outpatient Surgery Center
3. RAYUS Imaging Center
4. Baptist Health Care Microhospital Future Site
5. UHS Hospital Future Site
6. Luxe Senior Living
7. Cleveland Clinic Florida

LOCATION & DEMOGRAPHICS



Jupiter Medical Center

Admiral's Cove

Downtown Abacoa

Future Site of The Commons at Abacoa III

Max Plank

Alton Town Center

University of Florida / Scripps Research Institute

UHS Hospital Future Site

Frenchman's Creek



.9 MILES
Downtown Abacoa



3.2 MILES
Jupiter Medical Center



1.3 MILES
Interstate 95



4.3 MILES
Palm Beach Gardens

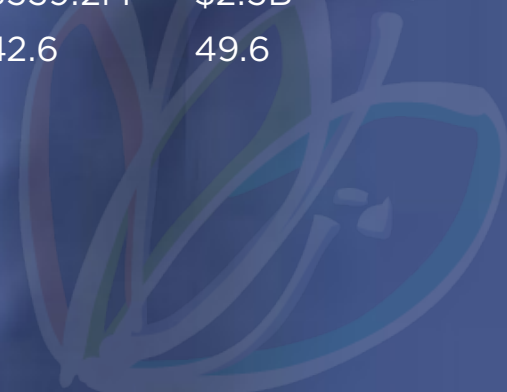


16.4 MILES
Palm Beach International Airport

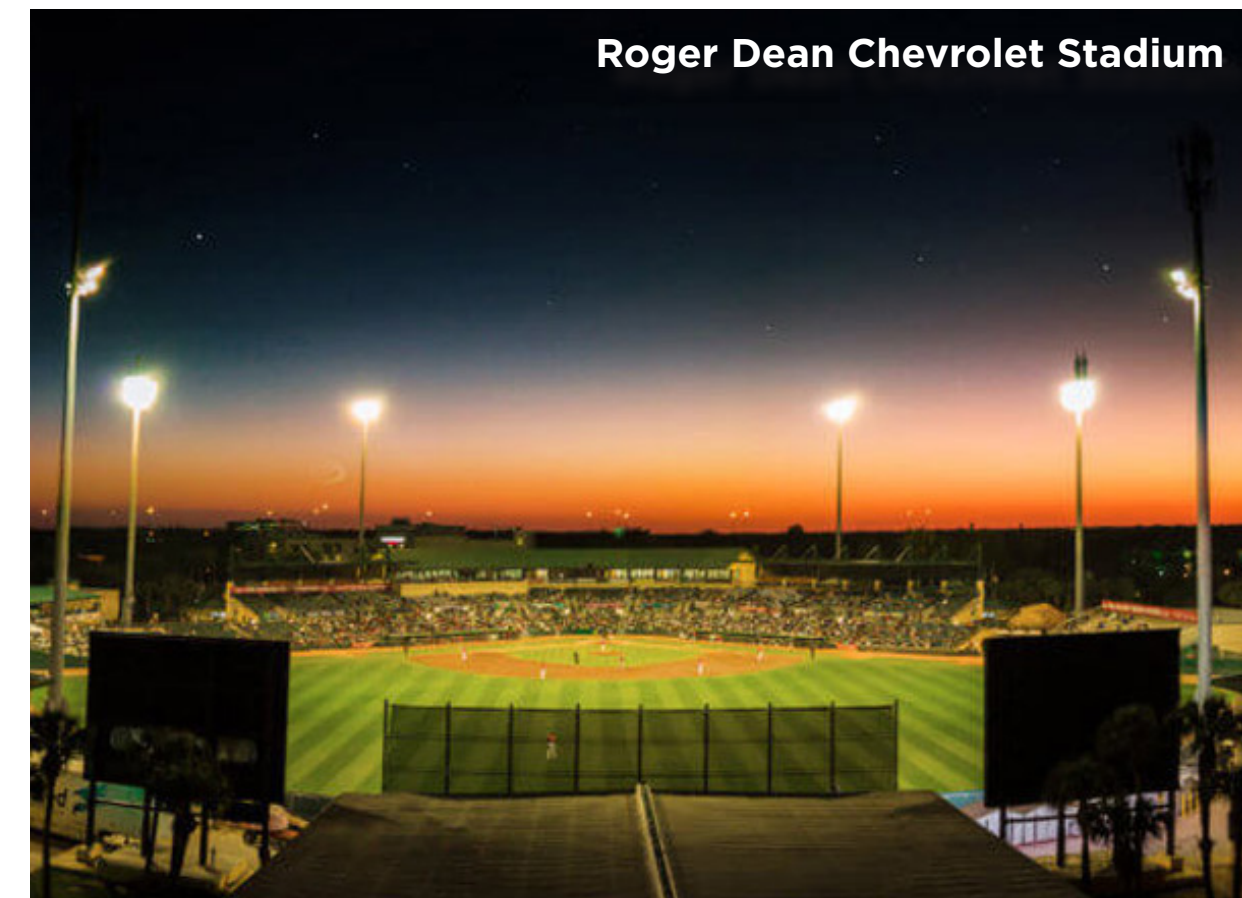
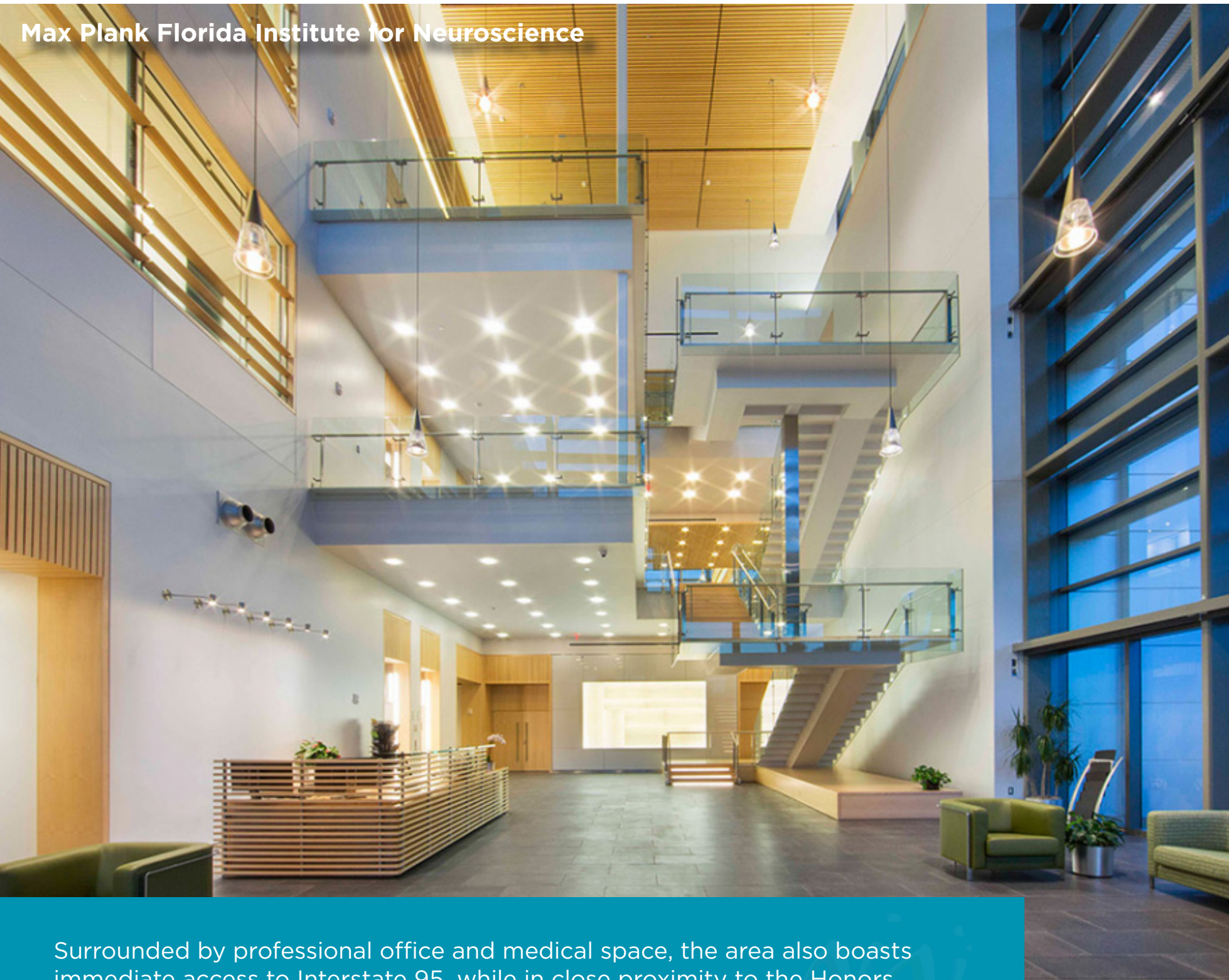
JUPITER DEMOGRAPHICS

2022 POPULATION
 2027 POPULATION PROJECTION
 POPULATION WITH A BACHELORS DEGREE
 MEDIAN HOME VALUE
 AVERAGE HOUSEHOLD INCOME
 INCOME \$200,000+
 TOTAL SPECIFIED CONSUMER SPENDING
 MEDIAN AGE

	2 MILE	5 MILE
2022 POPULATION	33,110	151,188
2027 POPULATION PROJECTION	35,408	160,676
POPULATION WITH A BACHELORS DEGREE	53%	47%
MEDIAN HOME VALUE	\$487,499	\$423,726
AVERAGE HOUSEHOLD INCOME	\$141,609	\$126,366
INCOME \$200,000+	3,040	13,094
TOTAL SPECIFIED CONSUMER SPENDING	\$539.2M	\$2.5B
MEDIAN AGE	42.6	49.6



THE NEIGHBORHOOD



Surrounded by professional office and medical space, the area also boasts immediate access to Interstate 95, while in close proximity to the Honors College of Florida Atlantic University, the state of the art, biomedical research facility of Scripps Research Institute Florida, and the Max Planck Florida Institute for Neuroscience, the first and only institute of it's kind located in North America.

JUPITER & ABACOA



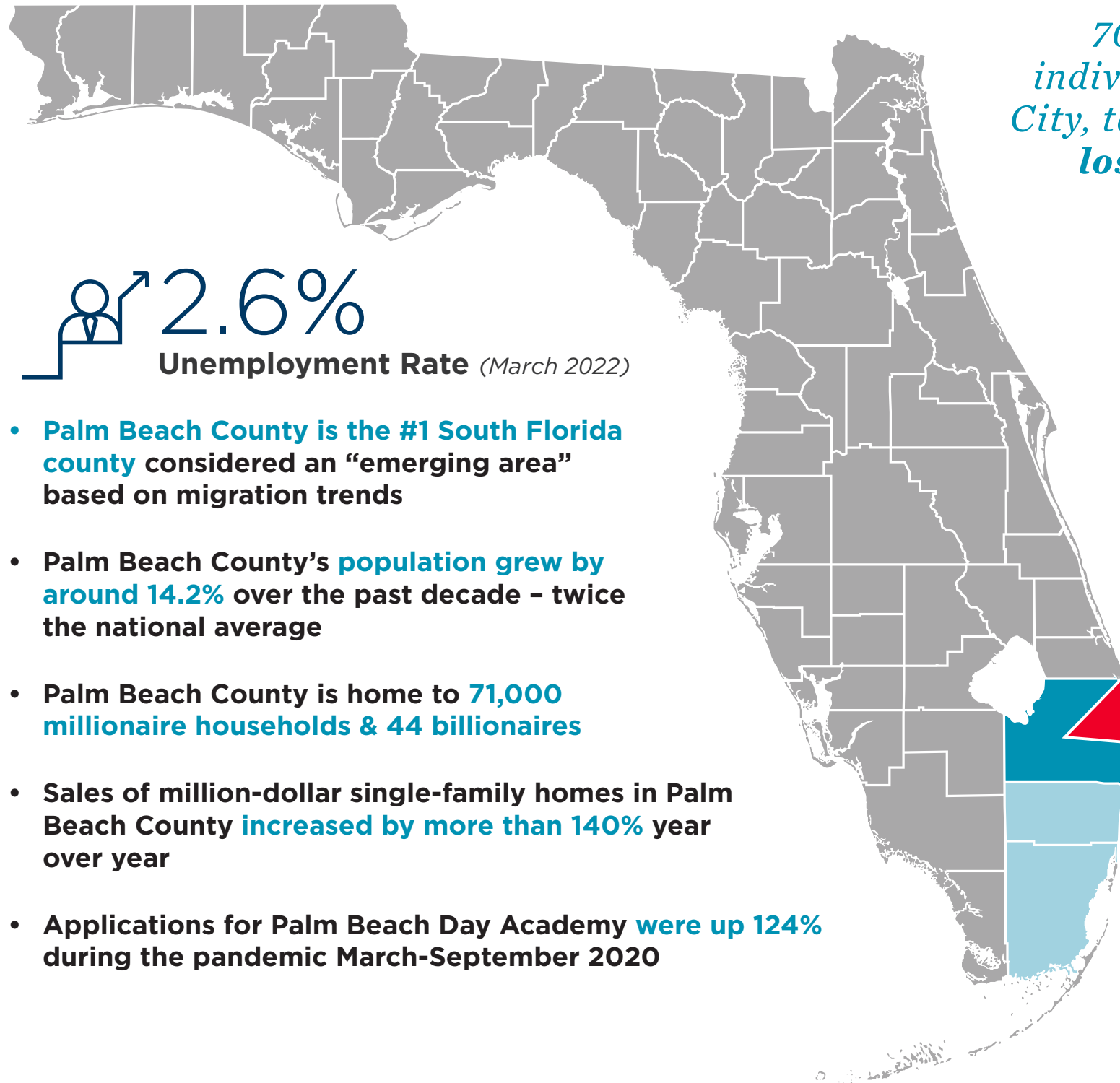
LIVE HERE. WORK HERE. PLAY HERE.

Downtown Abacoa. Old “Main Street” charm, classic design and a relaxed atmosphere give this Jupiter destination a true community feel.

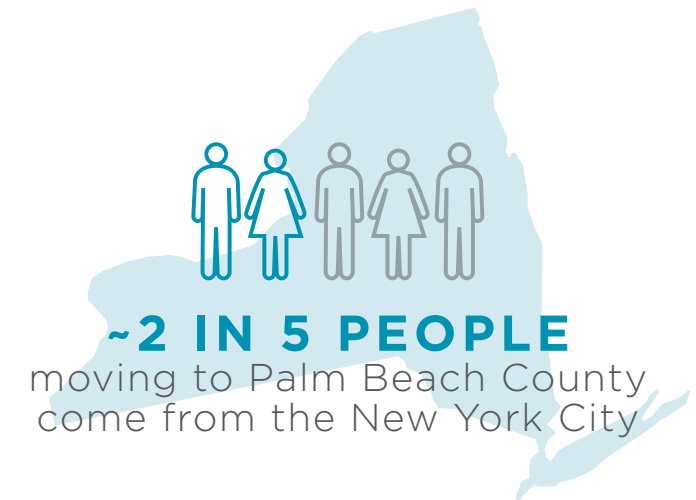
Home to some of the area’s best shopping, dining, entertainment and professional businesses, the newly renovated Downtown Abacoa has become a family and date night favorite. Whether you’re looking for social outings or a place to unwind, Abacoa has something for everyone.



HIGH NET WORTH MIGRATION



70,000 high net worth individuals left New York City, taking \$34 billion in lost income with them



 **2.6%**
Unemployment Rate (March 2022)

- Palm Beach County is the #1 South Florida county considered an “emerging area” based on migration trends
- Palm Beach County’s population grew by around 14.2% over the past decade - twice the national average
- Palm Beach County is home to 71,000 millionaire households & 44 billionaires
- Sales of million-dollar single-family homes in Palm Beach County increased by more than 140% year over year
- Applications for Palm Beach Day Academy were up 124% during the pandemic March-September 2020

NEW OUT-OF-MARKET RELOCATIONS

Goldman Sachs

VIRTU FINANCIAL

 **Point72**

SANDERS CAPITAL

N|E|P

Norwest Equity Partners

ELLIOTT

 **Miami Herald**

“The Floodgates Have Opened: 2020 Sees Surge of Business Transplants to South Florida”

THE COMMONS AT ABACOA III

FOR MORE INFORMATION,

**PLEASE
CONTACT:**

MICHAEL H. FELDMAN, CCIM
Senior Director
Florida Healthcare Advisory Practice
Commercial Brokerage

michael.feldman@cushwake.com

Direct: +1 561 227 2063

Mobile: +1 561 207 0852



©2022 Cushman & Wakefield. All rights reserved. The information contained in this communication is strictly confidential. This information has been obtained from sources believed to be reliable but has not been verified. NO WARRANTY OR REPRESENTATION, EXPRESS OR IMPLIED, IS MADE AS TO THE CONDITION OF THE PROPERTY (OR PROPERTIES) REFERENCED HEREIN OR AS TO THE ACCURACY OR COMPLETENESS OF THE INFORMATION CONTAINED HEREIN, AND SAME IS SUBMITTED SUBJECT TO ERRORS, OMISSIONS, CHANGE OF PRICE, RENTAL OR OTHER CONDITIONS, WITHDRAWAL WITHOUT NOTICE, AND TO ANY SPECIAL LISTING CONDITIONS IMPOSED BY THE PROPERTY OWNER(S). ANY PROJECTIONS, OPINIONS OR ESTIMATES ARE SUBJECT TO UNCERTAINTY AND DO NOT SIGNIFY CURRENT OR FUTURE PROPERTY PERFORMANCE.