

**6310 MABLETON PKWY.  
SUITE 100**

MABLETON, GA 30126

**For Lease  
6,000± SF  
Office / Showroom / Retail Space**

**IAN HICKS**

Associate  
678.348.6319  
ihicks@kingindustrial.com

**WILSON COVINGTON, SIOR**

Senior Vice President  
404.942.2073  
wcovington@kingindustrial.com

**KING** Industrial  
Realty, Inc.

Industrial • Commercial • Investment  
404.942.2000 | kingindustrial.com

FOR LEASE  
6,000± SF



### PROPERTY HIGHLIGHTS

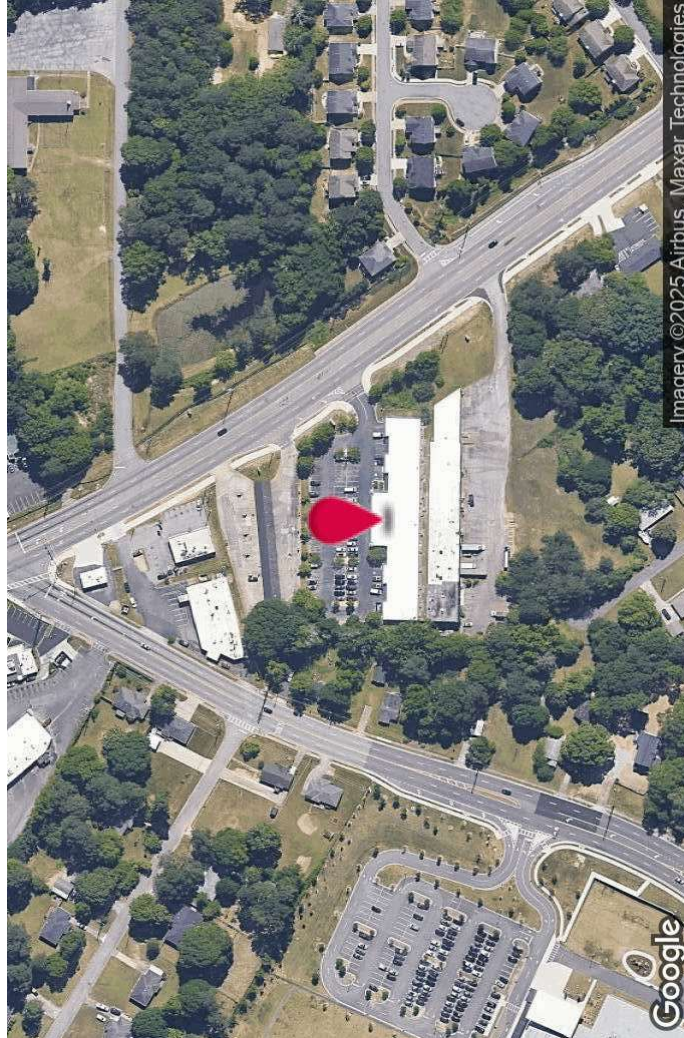
- Ideal Office / Showroom / Retail Space
- 100% Air Conditioned with Drop Ceiling
- Prime Visibility with 20,200± Vehicles Per Day
- 30 Parking Spaces
- Building Signage
- Professionally Landscaped
- Excellent Access to I-20, I-285 and Back up Arterials

### BUILDING SUMMARY

Available SF: 6,000 SF

Building Size: 18,300 SF

Zoning: NRC



Industrial • Commercial • Investment  
404.942.2000 | [kingindustrial.com](http://kingindustrial.com)

**IAN HICKS**

Associate

678.348.6319

[ihicks@kingindustrial.com](mailto:ihicks@kingindustrial.com)

**WILSON COVINGTON, SIOR**

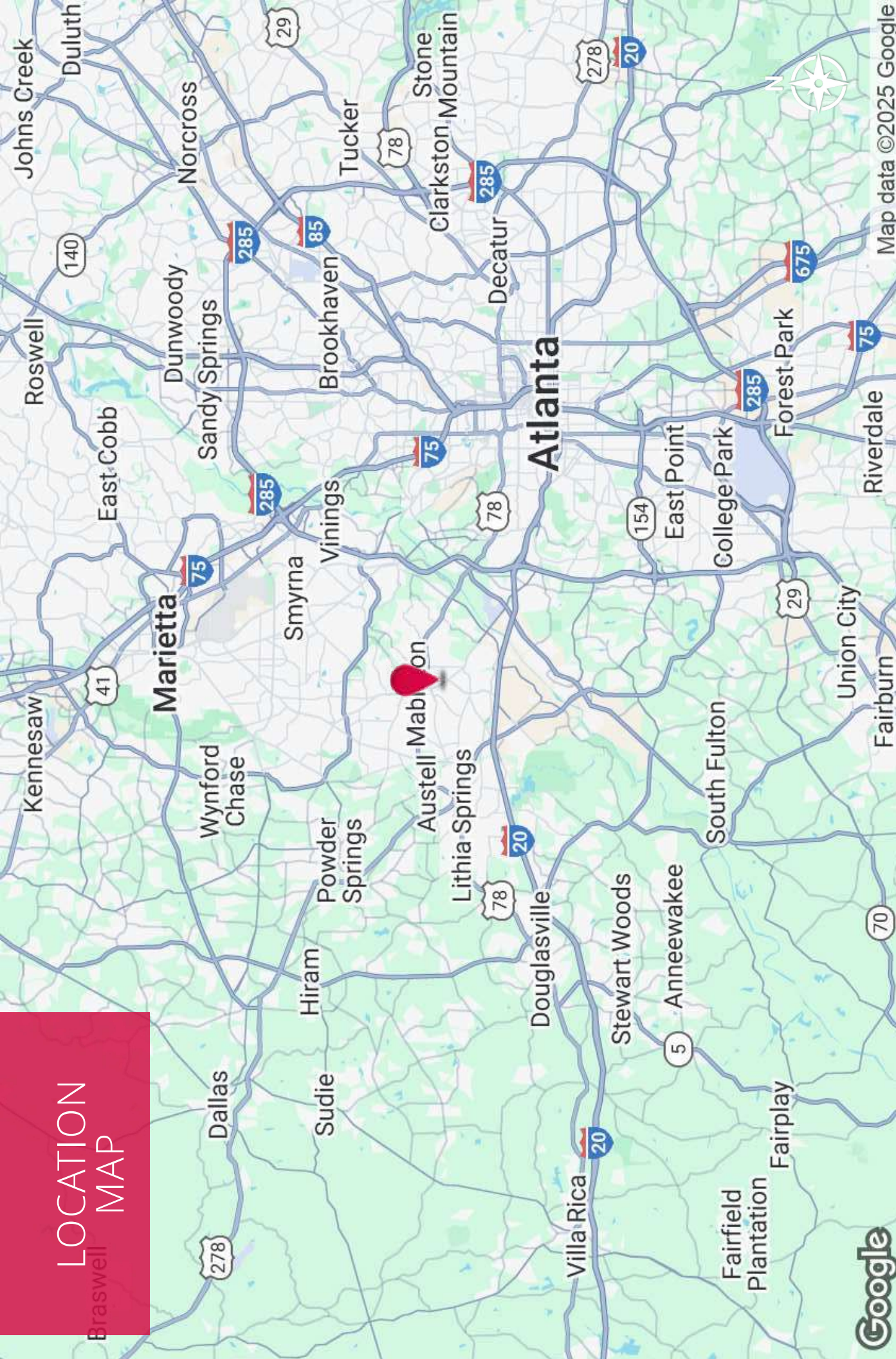
Senior Vice President

404.942.2073

[wcovington@kingindustrial.com](mailto:wcovington@kingindustrial.com)

*Every effort has been made to provide accurate information, but no liability is assumed for errors or omissions.*

# LOCATION MAP



Map data ©2025 Google

Every effort has been made to provide accurate information, but no liability is assumed for errors or omissions.

EXCLUSIVELY LISTED BY:

**IAN HICKS**

*Associate*

[ihicks@kingindustrial.com](mailto:ihicks@kingindustrial.com)

678.348.6319

**WILSON COVINGTON, SIOR**

*Senior Vice President*

[wcovington@kingindustrial.com](mailto:wcovington@kingindustrial.com)

404.942.2073

**KING**  
*Industrial  
Realty, Inc.*

Industrial • Commercial • Investment  
404.942.2000 | [kingindustrial.com](http://kingindustrial.com)