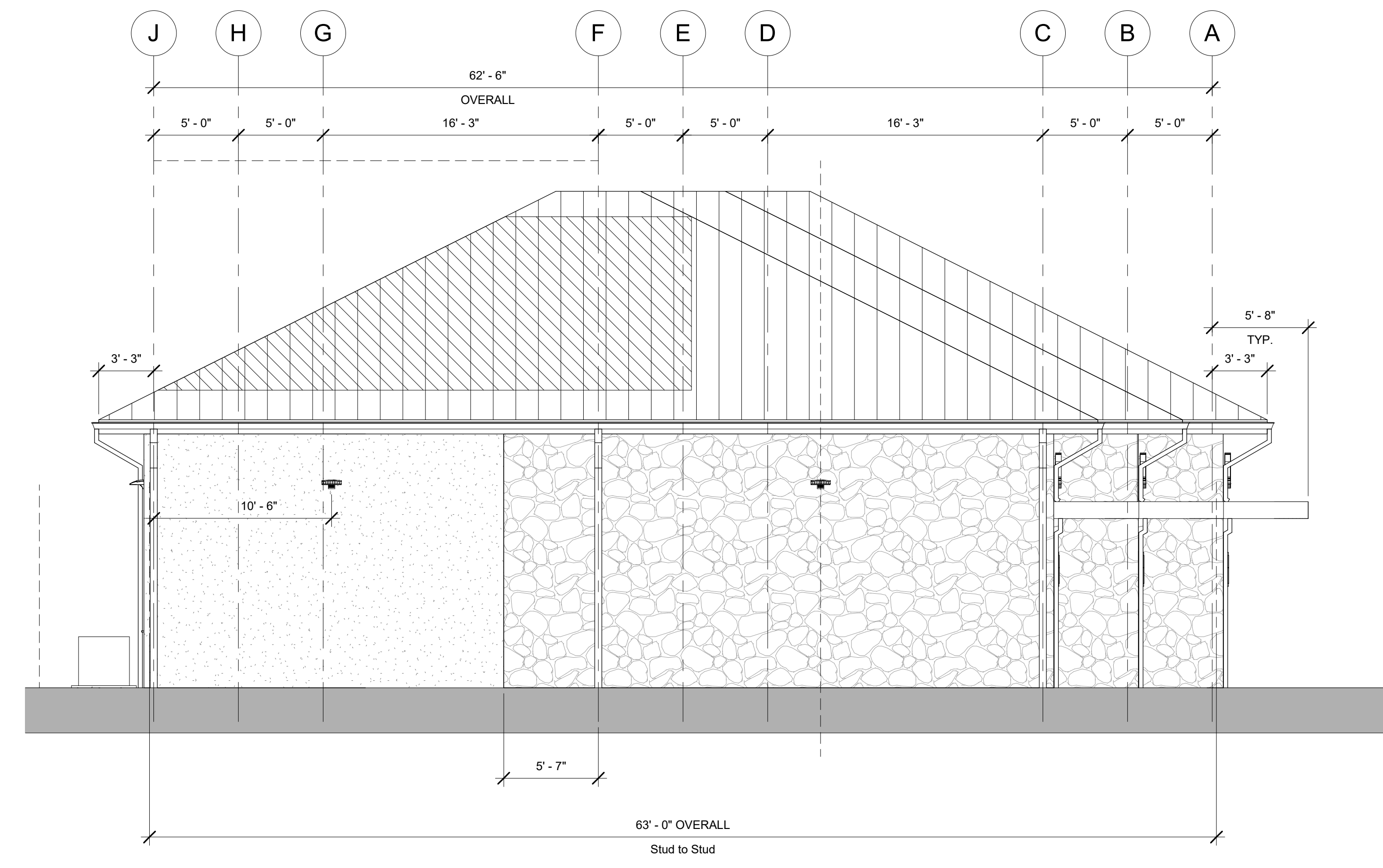


- NOTE: ROOFING CONTRACTOR TO PROVIDE MATCHING HIP CAPS AND VALLEY PANELS - SEE ROOF PLAN. PROVIDED VENTED RIDGE CAP WHERE SHOWN ON PLAN
- ROOF PENETRATIONS SHALL BE KEPT TO THE MINIMUM NUMBER PRACTICABLE AND SHALL BE LIMITED TO THE HATCHED AREA SHOWN ON THE ELEVATIONS AND ROOF PLAN.
- PREFINISHED STANDING SEAM METAL ROOF OVER ICE AND WATER SHIELD ON 5/8" PLYWOOD DECK
- CONT. PREFINISHED GUTTER
- CONT. PREFIN. EAVE FLASHING TO MATCH ROOF
- Roof 15'-0"
- CONT. PREFINISHED FASCIA
- DOWNSPOUT (TYP.)
- REVEAL
- HARD-COAT STUCCO - SMOOTH FINISH
- FULL CUT-OFF LED WALL PACK (TYP.) - SEE ELEC.
- INSUL. STEEL DOOR IN H.M. FRAME WITH FACTORY PRIMER - PAINT
- Level 1 0"
- CONDENSING UNIT ON PAD - TYPICAL

1 Retail #1 - Rear/South Elevation
3/16" = 1'-0"



2 Retail #1 - Left-side Elev.
3/16" = 1'-0"

REVISIONS

FOR REVIEW ONLY

FISHER
Fisher Architects, PA
351 Merrimon Avenue
Asheville, NC 28801
Copyright 2020 Fisher Architects, PA (828) 253-8265

Office/Retail Building #3
for OK Properties, LLC
1874 Brevard Road (NC 191) at Amythest Circle Arden, NC 28704

SHEET TITLE Retail #3 Exterior Elevations	DATE	01.05.22
	JOB NO.	20-0930
SHEET	A2c.2	