

VERDUGO HILLS PROFESSIONAL BLDG I & II

1808 & 1818 Verdugo Blvd
Glendale, CA 91208



107,000 SF COMBINED
MEDICAL OFFICE SPACE

ADJACENT TO
USC VERDUGO HILLS
HOSPITAL

FREE PARKING



For leasing information contact –

LESLIE PRICE, Director, Leasing

858.794.1900 | LPrice@pmbres.com | pmbres.com

CA Lic. 02131283

HIGHLIGHTS



- Building 1: 64,000 SF Medical Office Building
- Building 2: 43,000 SF Medical Office Building
- Newly upgraded common areas
- Adjacent to USC Verdugo Hills Hospital
- Free Parking
- On-site professional management
- Convenient access to Interstate 210 Freeway



LOCATION



For leasing information contact –

LESLIE PRICE, Director, Leasing

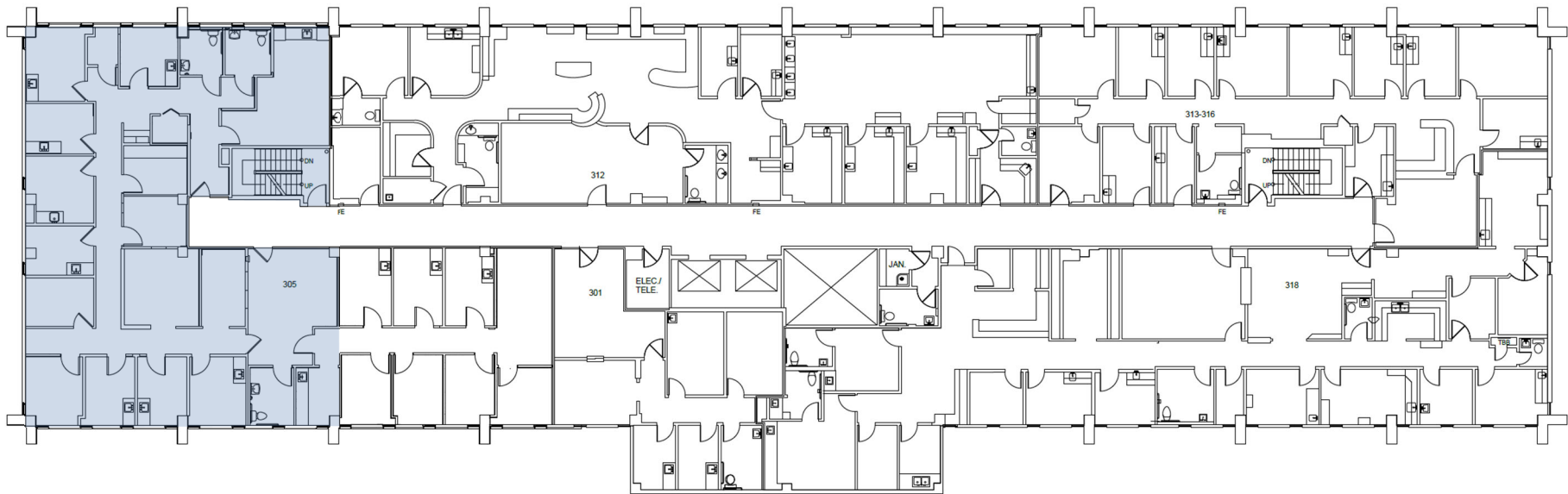
858.794.1900 | LPrice@pmbres.com | CA Lic. 02131283

PMBRES.COM

AVAILABLE SPACE

1808 VERDUGO BLVD

SUITE 305 | 4,401 RSF



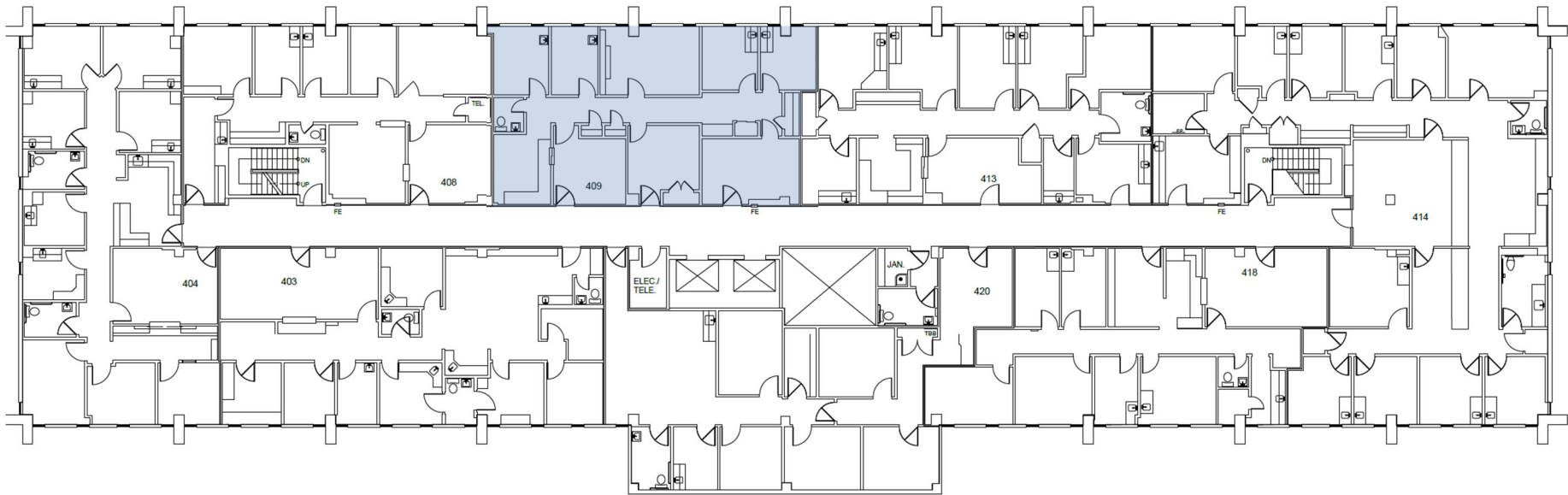
VERDUGO HILLS
PROFESSIONAL BLDG I & II
1808 & 1818 VERDUGO BLVD
GLENDALE, CA 91208

For leasing information, contact:
LESLIE PRICE, Director, Leasing
858.794.1900 | lprice@pmbres.com
CA Lic. 02131283

AVAILABLE SPACE

1808 VERDUGO BLVD

SUITE 409 | 1,627 RSF



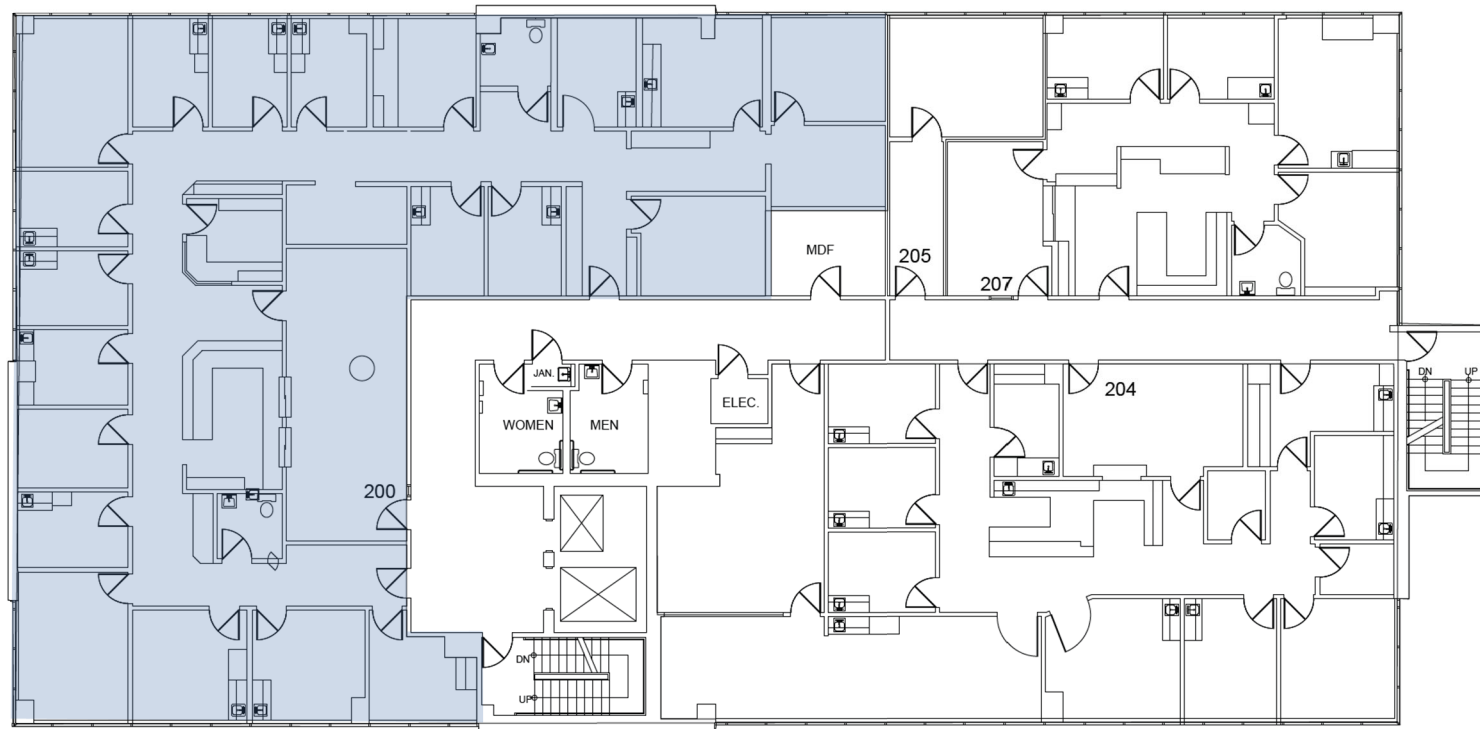
VERDUGO HILLS
PROFESSIONAL BLDG I & II
1808 & 1818 VERDUGO BLVD
GLENDALE, CA 91208

For leasing information, contact:
LESLIE PRICE, Director, Leasing
858.794.1900 | lprice@pmbres.com
CA Lic. 02131283

AVAILABLE SPACE

1818 VERDUGO BLVD

SUITE 200 | 4,977 RSF



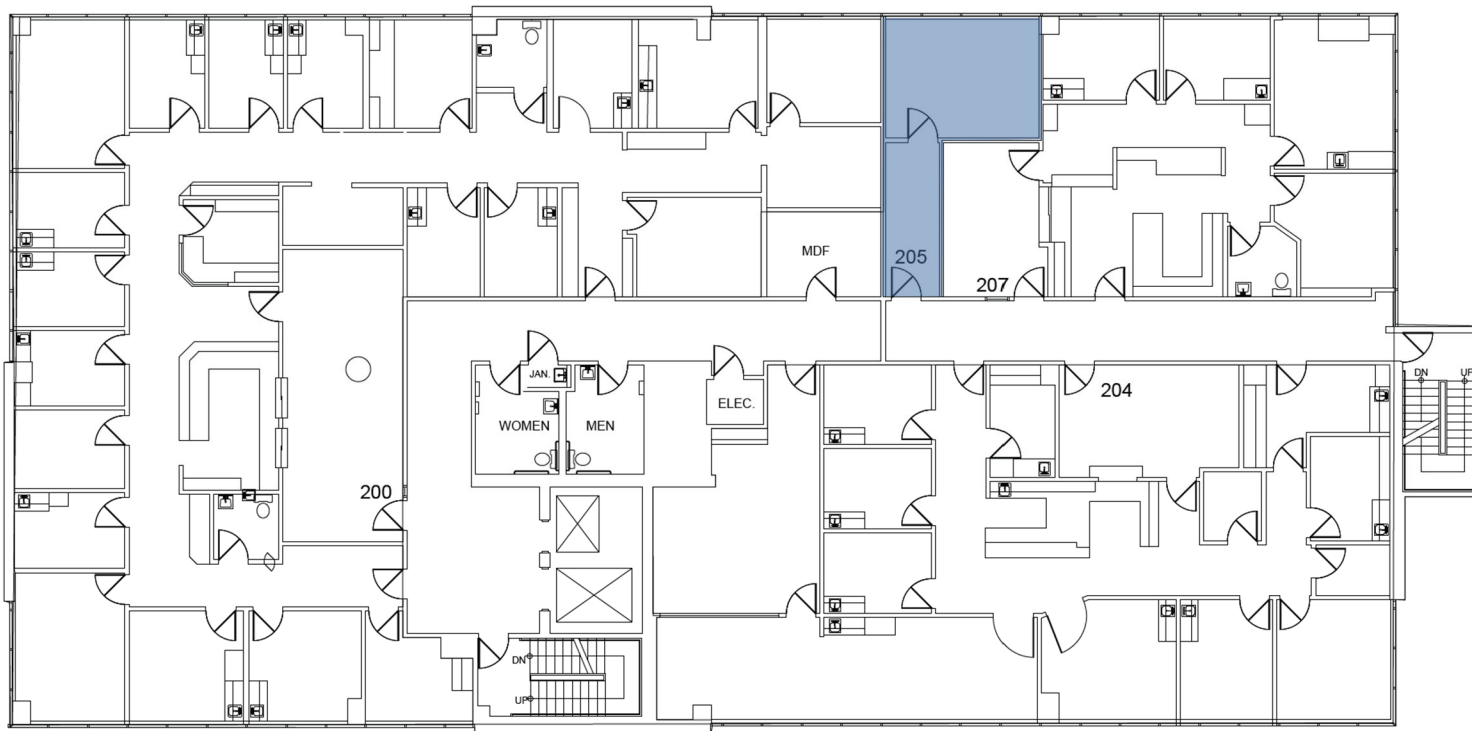
VERDUGO HILLS
PROFESSIONAL BLDG I & II
1808 & 1818 VERDUGO BLVD
GLENDALE, CA 91208

For leasing information, contact:
LESLIE PRICE, Director, Leasing
858.794.1900 | lprice@pmbres.com
CA Lic. 02131283

AVAILABLE SPACE

1818 VERDUGO BLVD

SUITE 205 | 287 RSF



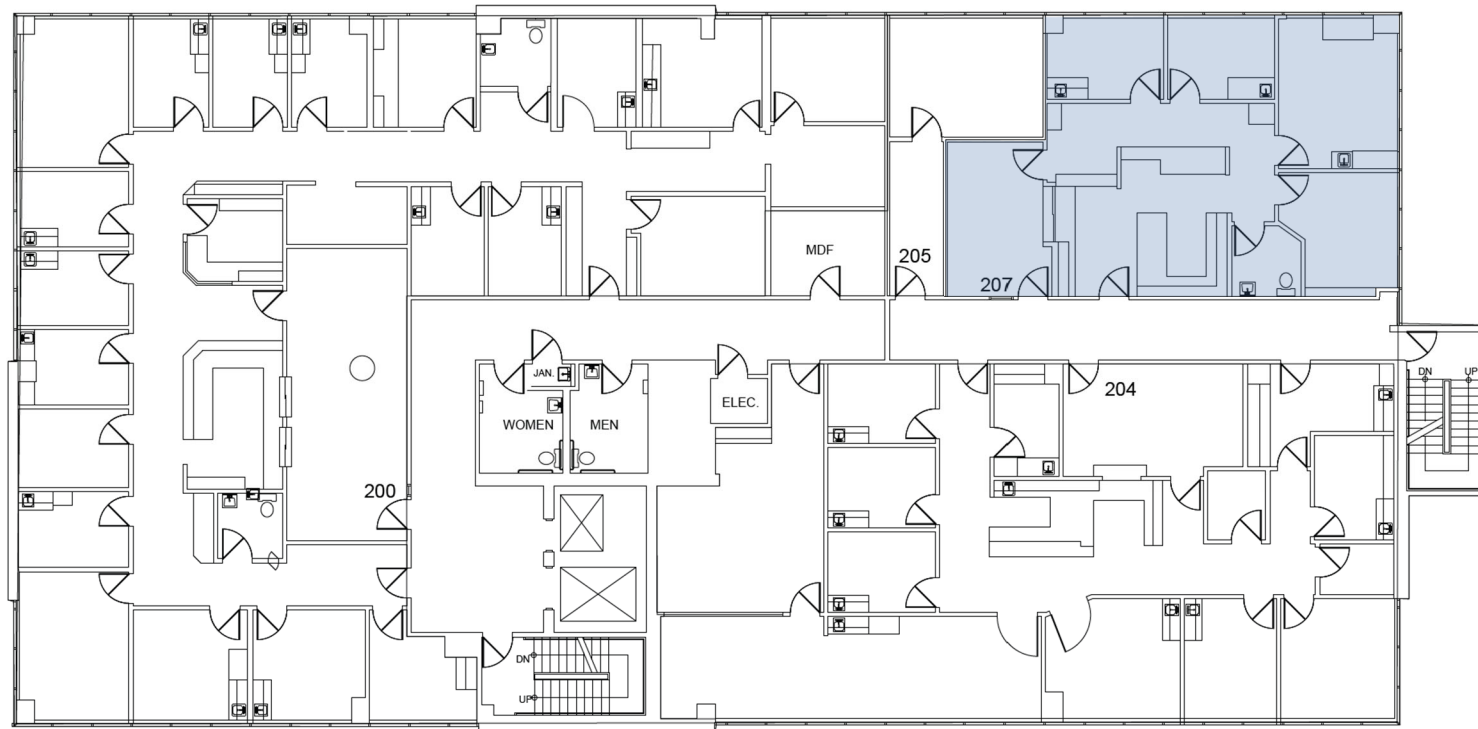
VERDUGO HILLS
PROFESSIONAL BLDG I & II
1808 & 1818 VERDUGO BLVD
GLENDALE, CA 91208

For leasing information, contact:
LESLIE PRICE, Director, Leasing
858.794.1900 | lprice@pmbres.com
CA Lic. 02131283

AVAILABLE SPACE

1818 VERDUGO BLVD

SUITE 207 | 1,419 RSF



VERDUGO HILLS
PROFESSIONAL BLDG I & II
1808 & 1818 VERDUGO BLVD
GLENDALE, CA 91208

For leasing information, contact:
LESLIE PRICE, Director, Leasing
858.794.1900 | lprice@pmbres.com
CA Lic. 02131283

TENANT SERVICE

PMB Real Estate Services LLC (PMB RES) is a leading provider of medical office building (MOB) and healthcare real estate services in the western United States. From Vancouver, Washington to Austin, Texas (and most places in between) PMB RES manages and leases 5.5 million square feet of MOB space.

We have 11 offices throughout the western United States including our headquarters in Solana Beach, California. Since its inception the Company has partnered with a broad spectrum of clients including hospital systems, universities and industry leading institutional organizations.

With increasingly sophisticated services moving from acute care hospitals to MOB, there is a need for specialized property management capabilities. PMB RES meets those needs and achieves the highest standards with our level of

service. With specialized tenants and healthcare providers as the focus, our personalized property management approach relies on the use of focused, key processes throughout the organization.

We are relentless in our drive to maximize operational efficiency of our teams in order to optimize the useful lives of each asset.



Our Property Management and Engineering Teams Set the Standard for Tenant Service and Care

For the third consecutive year PMB Real Estate Services is #1 in the Grace Hill Elite 5 for achieving the nation's highest tenant satisfaction scores in the medical office sector, as measured by the Kingsley Survey!

PMB RES has long been committed to extraordinary tenant relationships. This honor speaks to our consistently high scores on the survey while also reflecting our personal connection to, and focus on, those relationships. Congratulations to our field teams in every one of our regions for contributing to this special acknowledgment through their daily focus on creating satisfied, loyal tenants in everything they do.



PMB Real Estate Services

329 S. Highway 101, Suite 160
Solana Beach, CA 92075
858.794.1900 | pmbres.com