

OFFICE/RETAIL SPACE FOR LEASE

2230 S. E. Washington Blvd. - Bartlesville, OK

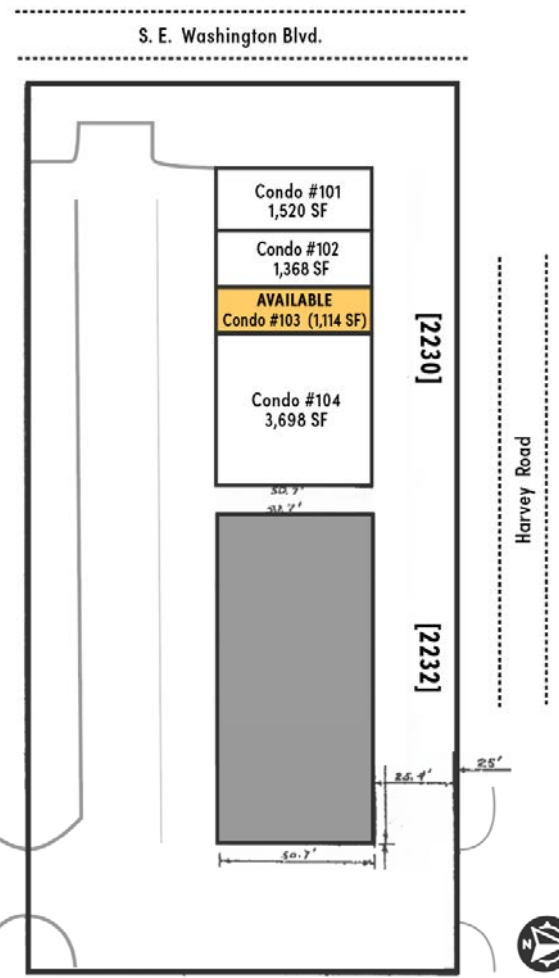


PROPERTY HIGHLIGHTS



SHEILA COOPER
 Cell: 918-724-5140
 scooper@bauertulsa.com

- Available Suite: #103 (1,114 SF)
- Flexible Two-Story Commercial Condominiums
- Plumbed for Medical, Salon, or Service Uses
- Private Restrooms and Kitchenettes in Each Unit
- Highway-Visible Signage Opportunities
- Strong Exposure Along SE Washington Blvd.
- Convenient Access to Restaurants and Business



23,900 Vehicles per day - HWY 75 / S. E. Washington Blvd.

TRAFFIC COUNT - SOURCE OKDOT 2024

	1 MILE	3 MILES	5 MILES
POPULATION	5,100	29,301	39,482
HOUSEHOLDS	2,083	12,003	16,068
AVERAGE HH INCOME	\$128,479	\$92,682	\$88,089

DEMOGRAPHICS - SOURCE ESRI 2025

BAUER & ASSOCIATES, REALTORS

"A LEADER IN TULSA COMMERCIAL REAL ESTATE SINCE 1979"
 Commercial - Industrial - Investment Property - Property Management

6846 S. Canton Ave., Suite 100, Tulsa, OK 74136

All statements herein are for information purposes only and are believed to be reliable; however, no warranty or representation is made as to the accuracy thereof and the same is submitted subject to errors, omissions, change of price, terms, conditions and prior sale or lease.

Office 918-665-1210

Fax 918-665-6462

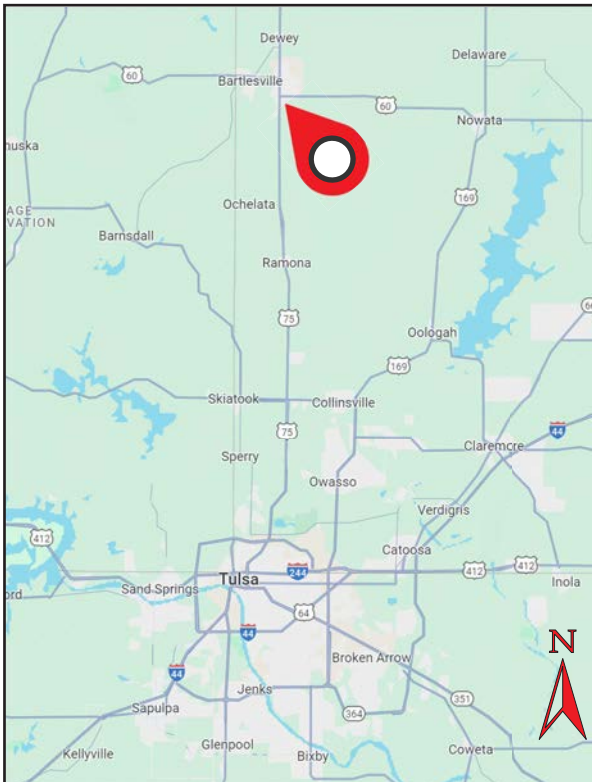
www.bauertulsa.com

OFFICE/RETAIL SPACE FOR LEASE

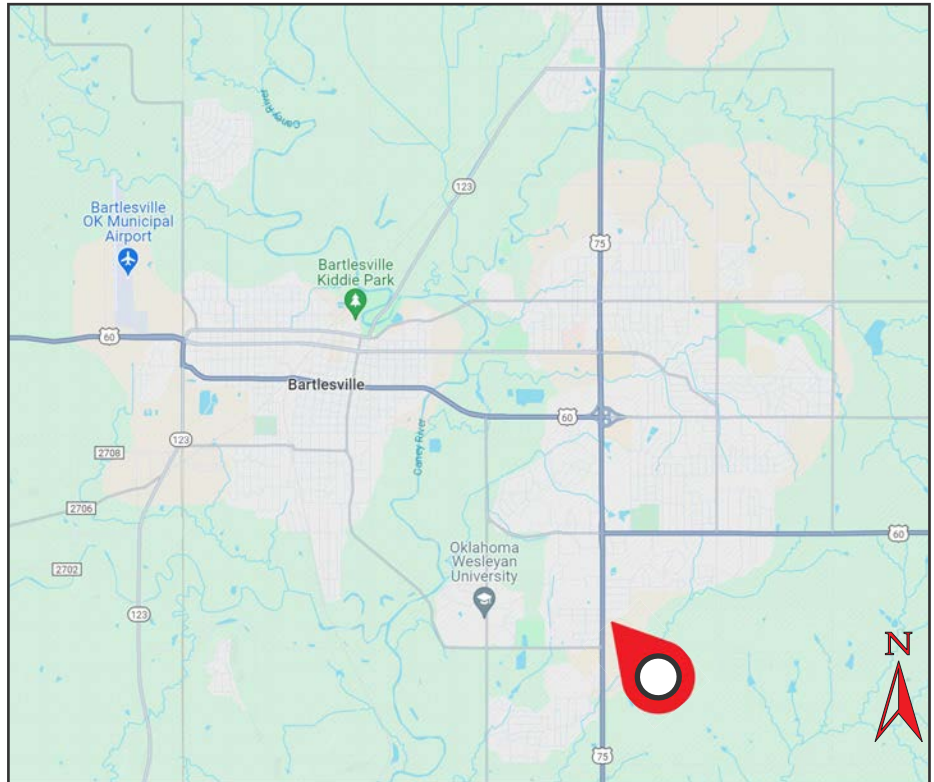
2230 S. E. Washington Blvd. - Bartlesville, OK



Northeastern Oklahoma Map



Bartlesville, OK Map



BAUER & ASSOCIATES, REALTORS

"A LEADER IN TULSA COMMERCIAL REAL ESTATE SINCE 1979"

Commercial - Industrial - Investment Property - Property Management



SHEILA COOPER

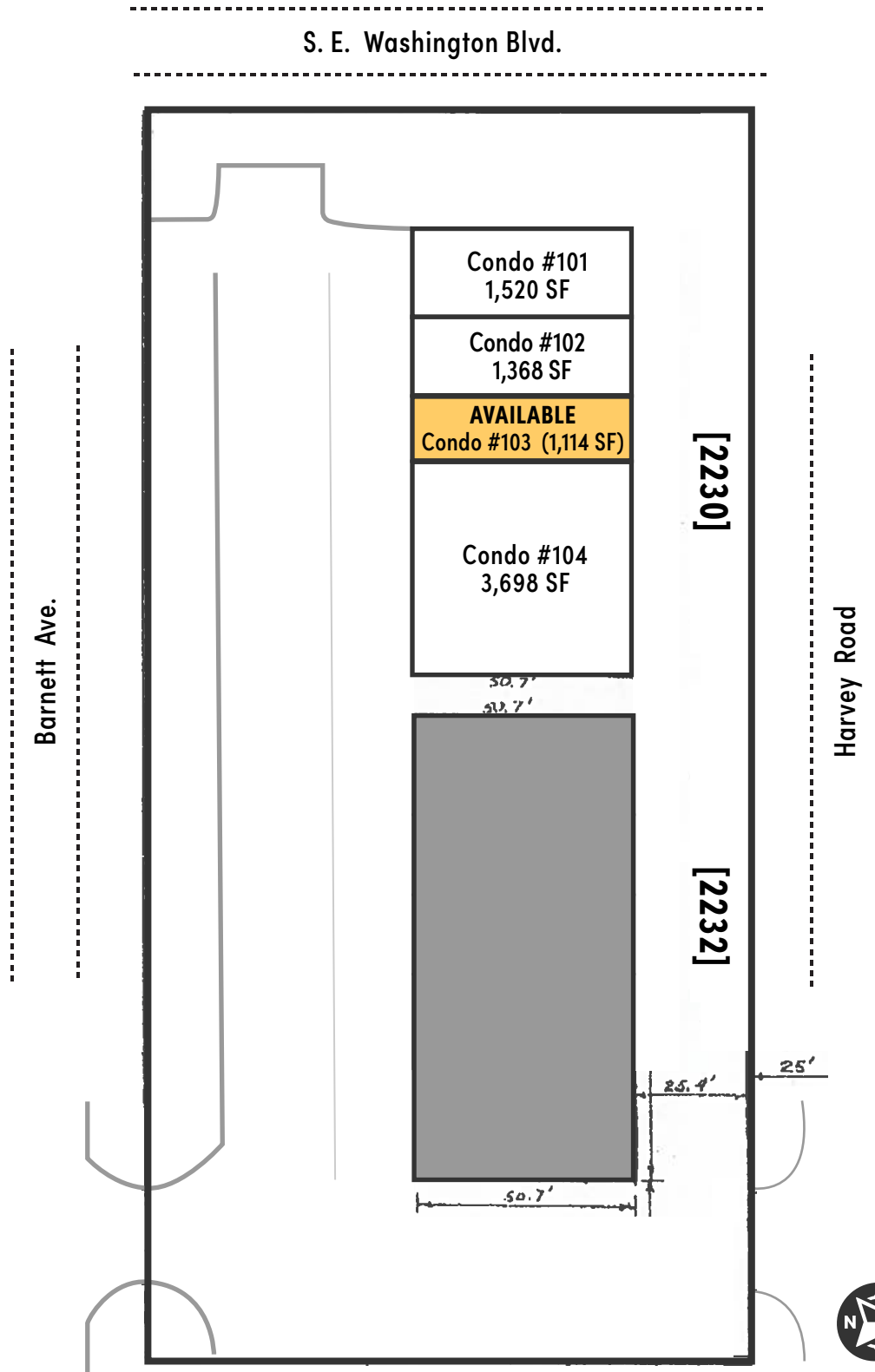
Office: 918-665-1210

Cell: 918-724-5140

scooper@bauerok.com

OFFICE/RETAIL SPACE FOR LEASE

2230 S. E. Washington Blvd. - Bartlesville, OK



BAUER & ASSOCIATES, REALTORS

"A LEADER IN TULSA COMMERCIAL REAL ESTATE SINCE 1979"

Commercial - Industrial - Investment Property - Property Management

6846 S. Canton Ave., Suite 100, Tulsa, OK 74136

All statements herein are for information purposes only and are believed to be reliable; however, no warranty or representation is made as to the accuracy thereof and the same is submitted subject to errors, omissions, change of price, terms, conditions and prior sale or lease.

SHEILA COOPER

Office: 918-665-1210

Cell: 918-724-5140

scooper@bauerok.com