

80 NASSAU



NASSAU PEDESTRIAN MALL | DOWNTOWN

RETAIL SPACE FOR LEASE

2600 RSF
Ground
Floor

NEW YORK, NEW YORK

Ground Floor Retail ideally located on the busy Nassau Street Pedestrian Mall near Wall Street
Downtown NYC.

Unit: **Ground Floor**
RSF: **2600 RSF**
Ceilings: **12'**
Avail: **Immediate**
Price: **\$110/SqFt**

Scott Klatsky
(212)206-6155

sklatsky@timeequities.com

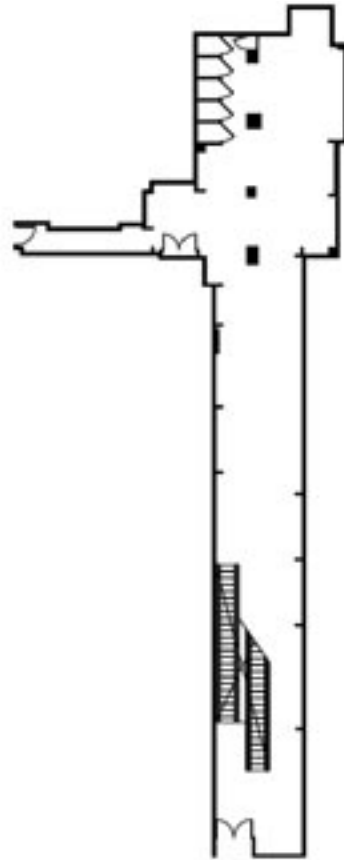


NYC RETAIL
BY TIME EQUITIES INC

Scott Schneidman
(212)206-6163

sschneidman@timeequities.com

80 NASSAU



2600 RSF
Ground
Floor

Click on Plan
For Additional Information,
Photos, Videos...

NASSAU PEDESTRIAN MALL | DOWNTOWN

RETAIL SPACE FOR LEASE

2600 RSF
Ground
Floor

NEW YORK, NEW YORK



No warranty, or representation is made as to the accuracy of the above information and same is submitted subject to errors, omissions, change of price, rental or other conditions, prior lease or withdrawal without notice, and to any special listing conditions, including the rate and manner of payment of commissions for particular offering, the terms of which are available to duly licensed brokers. This listing is subject to the aforesaid conditions and is not to be deemed an employment nor a binding contract of any kind unless or until our brokerage agreement is fully executed.

Scott Klatsky
(212)206-6155

sklatsky@timeequities.com



NYC RETAIL
BY TIME EQUITIES INC

Scott Schneidman
(212)206-6163

sschneidman@timeequities.com

55 FIFTH AVE | 15TH FLOOR | NEW YORK, NY | 10003-4398 | 212-206-6000 | TIMEEQUITIES.COM