

# 124 Street Place

Excellent Location with Turnkey Solutions

10235 - 124 Street  
Edmonton, Alberta

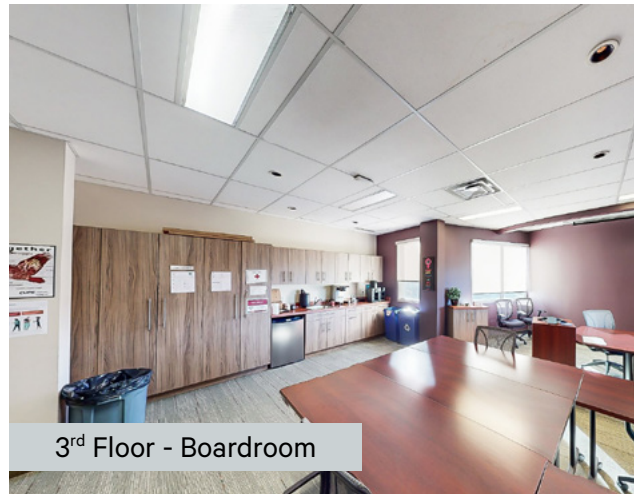
Up to 9,972 SF available now


 [Click here for virtual tour](#)



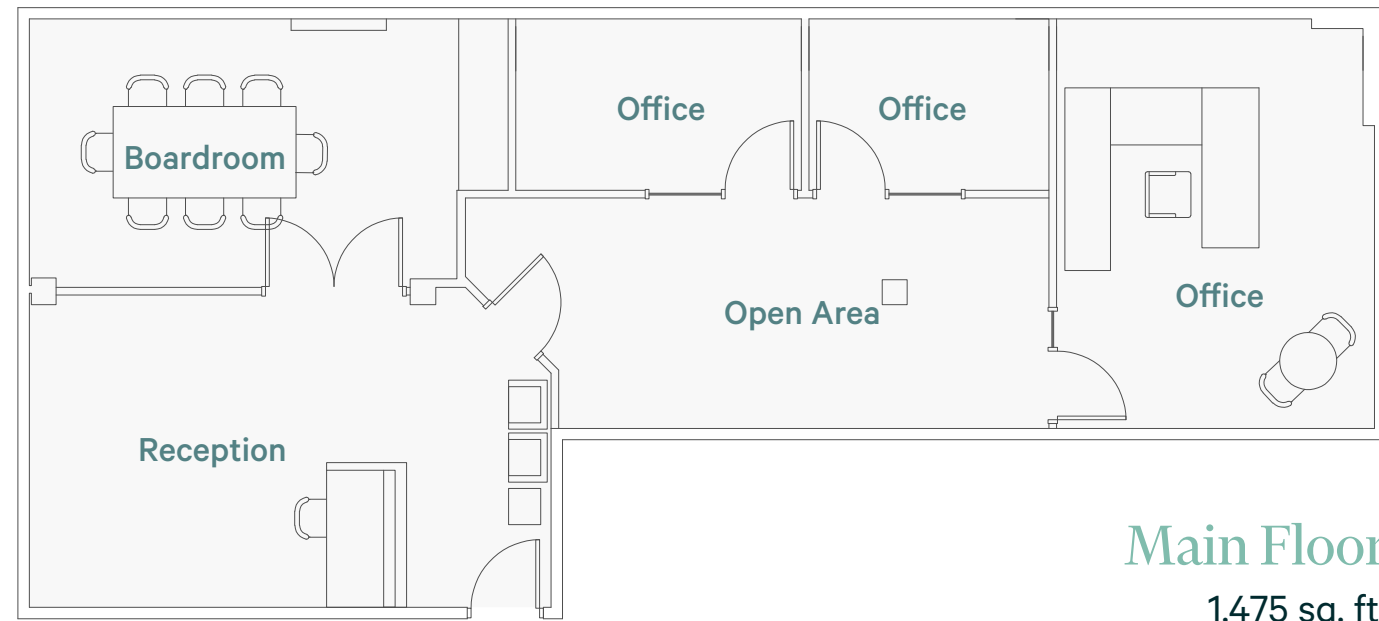
# Property Details

|                 |   |
|-----------------|---|
| Address         | 10235 - 124 <sup>th</sup> Street                                  |
| Available Area  | 3 <sup>rd</sup> Floor: 9,972 sq. ft.<br>Main Floor: 1,475 sq. ft. |
| Net Rent        | \$10.00 - \$12.00 / sq. ft.                                       |
| Additional Rent | \$15.60 / sq. ft. (2024)  |
| Parking Ratio   | 1:579 sq. ft.   |
| Parking Rates   | Surface: \$150 / month<br>Underground: \$200 / month              |

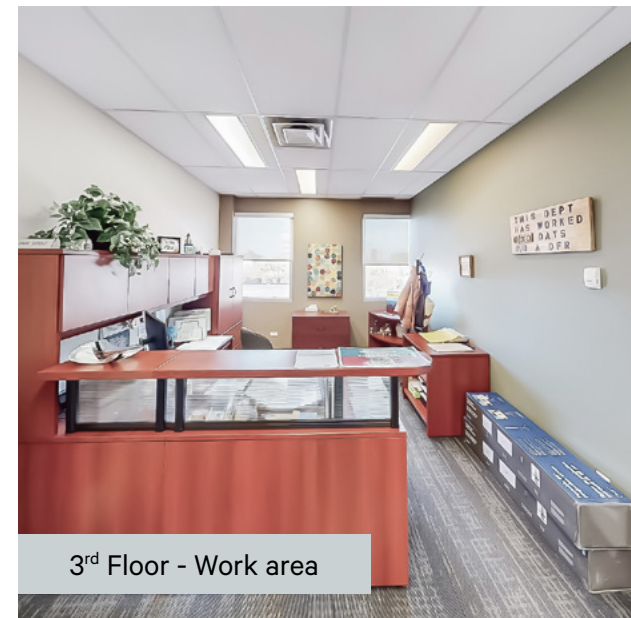


 [Click here for virtual tour](#)

**3<sup>rd</sup> Floor**  
9,972 sq. ft.



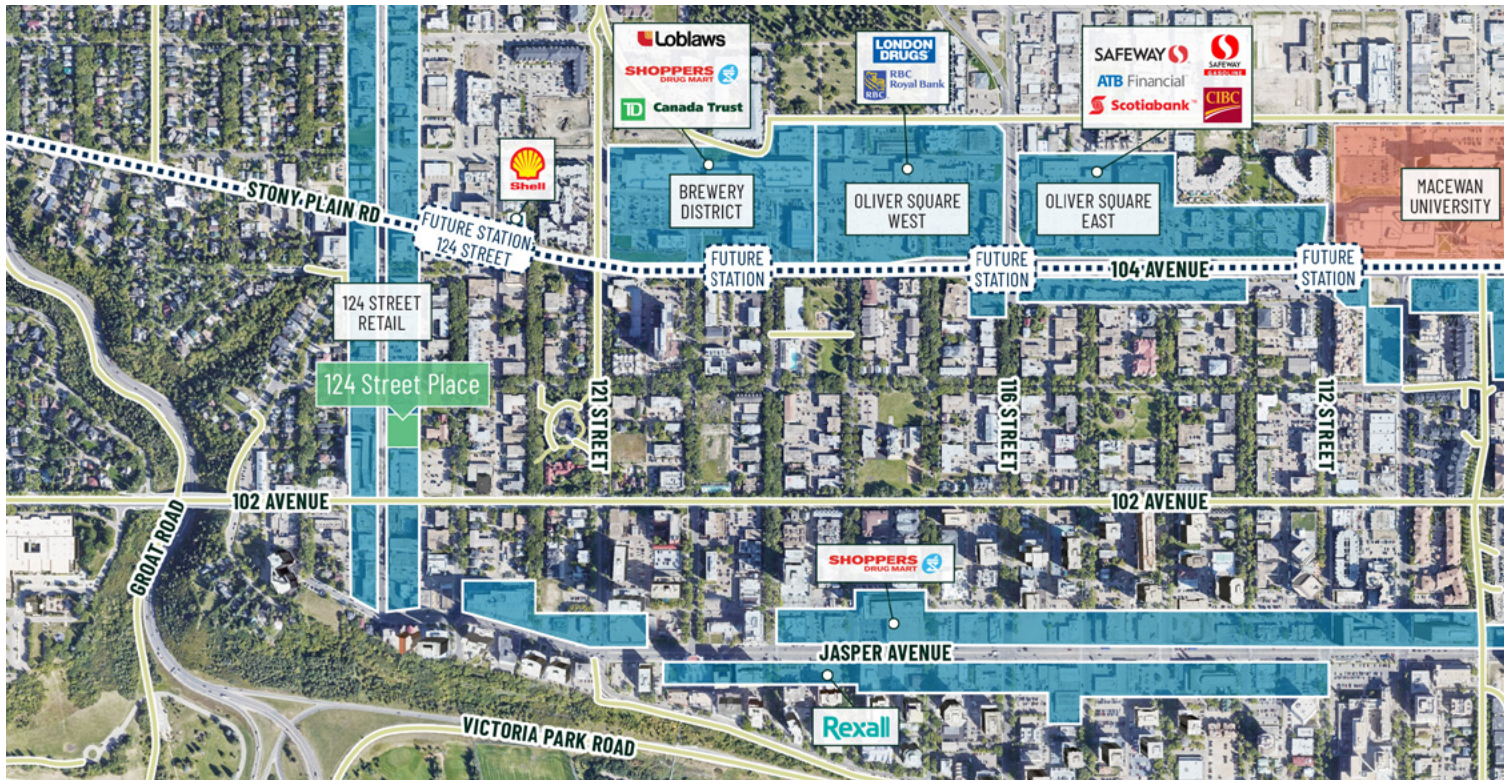
**Main Floor**  
1,475 sq. ft.



# 124 Street Place

10235 - 124 Street | Edmonton, Alberta

# For Lease



## 124<sup>th</sup> Street Retailers

### Cafés & Bakeries

- + Bloom Cookie Co.
- + Remedy Café
- + Duchess Bakeshop
- + Destination Donuts
- + Credo Coffee

### Shopping & Services

- + The Pampered Puppy
- + Scarpe Diem Shoes
- + Loblaws City Market
- + The Fixx
- + Lightform

### Health & Wellness

- + InStep Physio
- + Black Tusk Crossfit
- + Lion's Breath Yoga
- + YEG Cycle
- + Guardian Dental

### Arts & Culture

- + Bearclaw Gallery
- + Scott Gallery
- + West End Gallery
- + Lotus Gallery
- + The Front Gallery

## Contact Us

### Ryan O'Shaughnessy

Senior Associate  
+1 780 229 4686  
ryan.oshaughnessy@cbre.com

### Mark Anderson

Vice President  
+1 780 229 4652  
mark.anderson2@cbre.com

This disclaimer shall apply to CBRE Limited, and to all divisions of the Corporation ("CBRE"). The information set out herein (the "Information") has not been verified by CBRE, and CBRE does not represent, warrant or guarantee the accuracy, correctness and completeness of the Information. CBRE does not accept or assume any responsibility or liability, direct or consequential, for the Information or the recipient's reliance upon the Information. The recipient of the Information should take such steps as the recipient may deem necessary to verify the Information prior to placing any reliance upon the Information. The Information may change and any property described in the Information may be withdrawn from the market at any time without notice or obligation to the recipient from CBRE.