

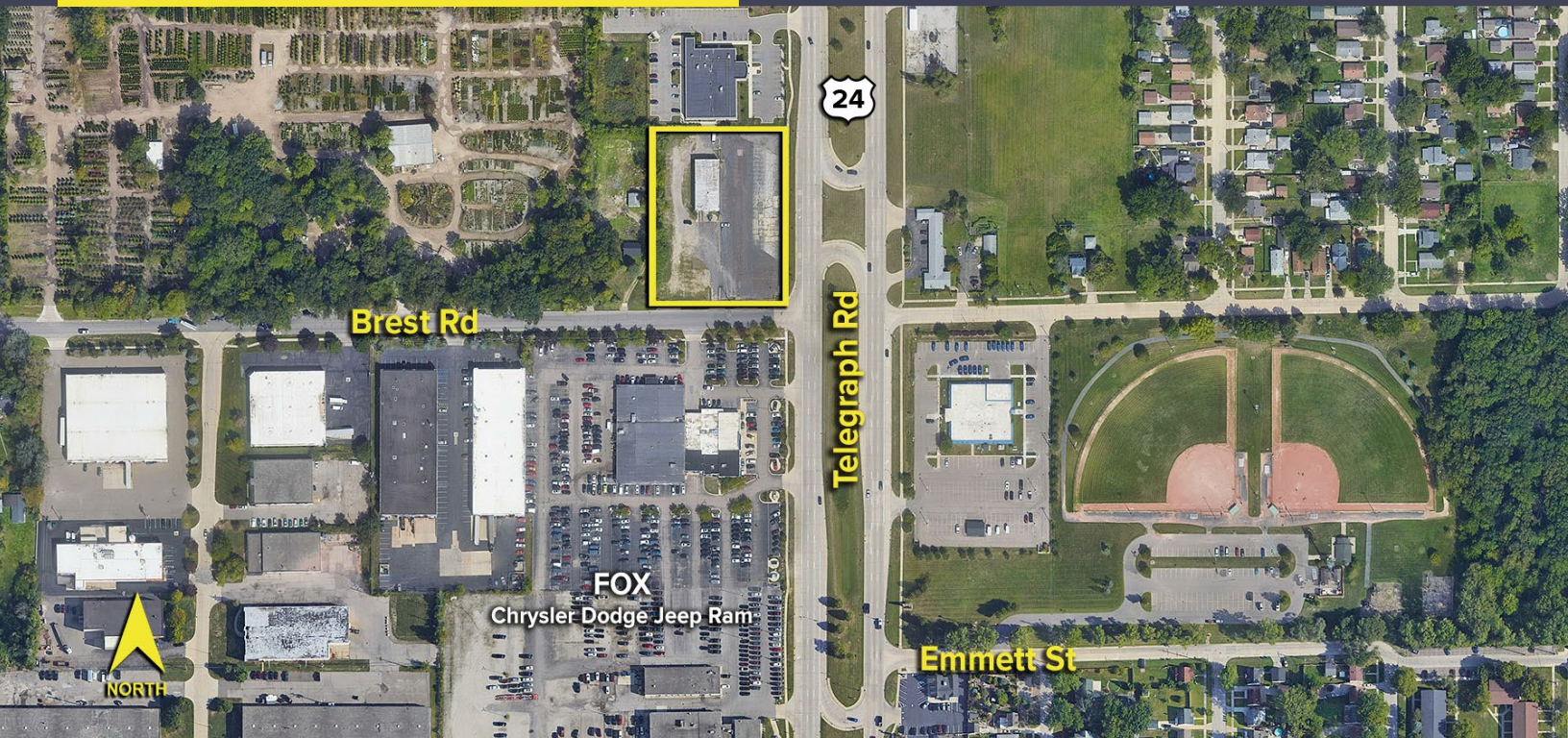
24050 BREST ROAD
TAYLOR, MICHIGAN



SIGNATURE ASSOCIATES
KNOW SIGNATURE | KNOW RESULTS

LAND FOR SALE
2.18 Acres Available

MAJOR PRICE REDUCTION



PROPERTY FEATURES

- 2.18 acres available
- Zoned B-3, General Business
- Located on heavily traveled Telegraph Road
- Northwest corner of Brest Road and Telegraph Road, has a 4,464 sq. ft. building that can be demolished for redevelopment
- Ideal approved uses include quick-service retail, urgent care, and office
- Uses requiring special land use approval, include automotive, car wash, gas station and drive-through operations
- Sale price: \$825,000 (\$378,441/acre)



For more information, please contact:

SCOTT ELLIOTT
(248) 948 4182
sellott@signatureassociates.com

JUSTIN GAFFREY
(248) 799 3143
jgaffrey@signatureassociates.com

SIGNATURE ASSOCIATES
One Towne Square, Suite 1200
Southfield, MI 48076
www.signatureassociates.com

24050 Brest Road – Taylor, Michigan

Land For Sale

2.18
Acres
AVAILABLE

Existing
Building
Photos



For more information, please contact:

SCOTT ELLIOTT

(248) 948 4182

selliott@signatureassociates.com

JUSTIN GAFFREY

(248) 799 3143

jgaffrey@signatureassociates.com

SIGNATURE ASSOCIATES

One Towne Square, Suite 1200

Southfield, MI 48076

www.signatureassociates.com

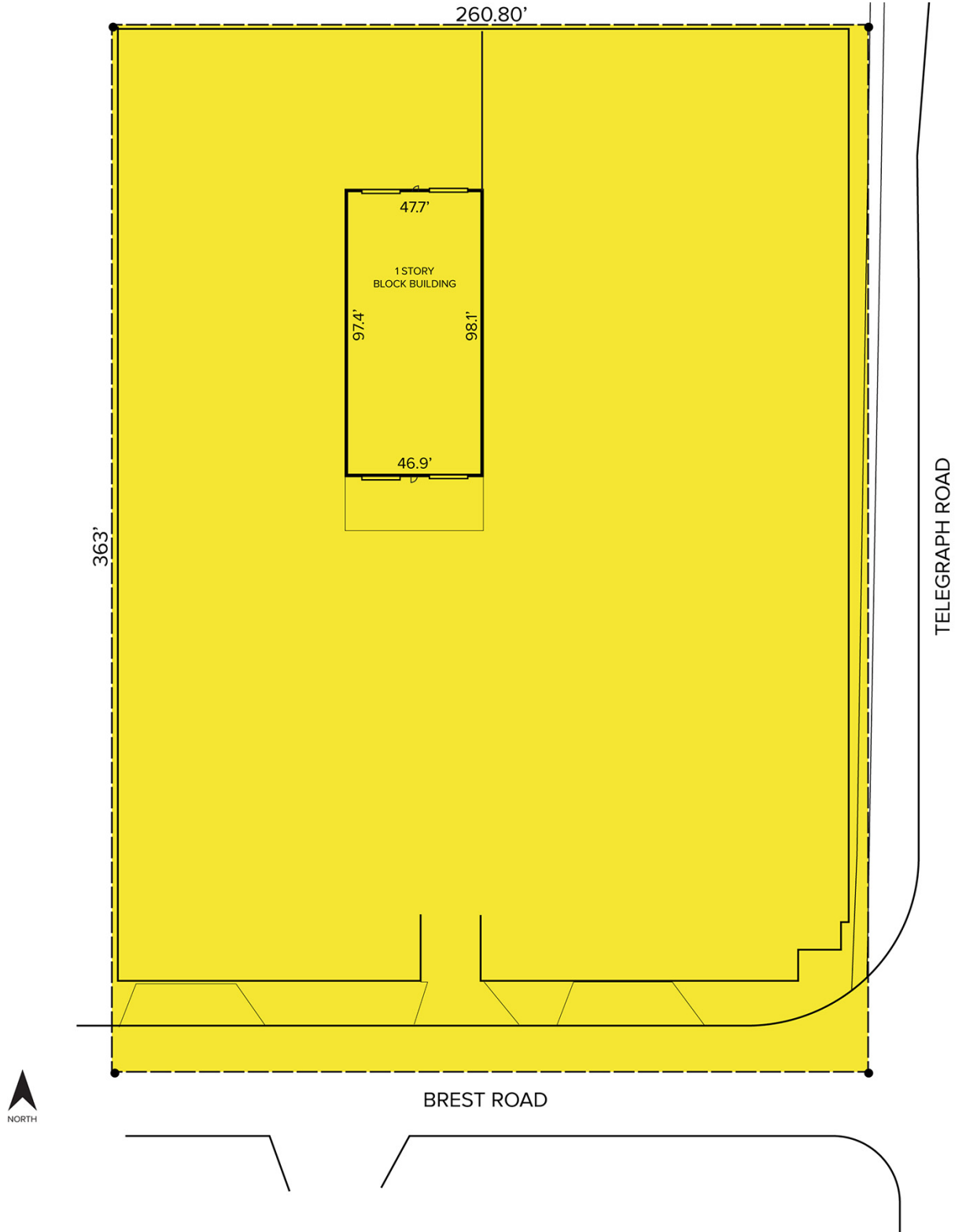
Information is subject to verification and no liability for errors or omissions is assumed. Price is subject to change and listing withdrawal.

24050 Brest Road – Taylor, Michigan

Land For Sale

2.18
Acres
AVAILABLE

Site Plan



For more information, please contact:

SCOTT ELLIOTT

(248) 948 4182

selliott@signatureassociates.com

JUSTIN GAFFREY

(248) 799 3143

jgaffrey@signatureassociates.com

SIGNATURE ASSOCIATES

One Towne Square, Suite 1200

Southfield, MI 48076

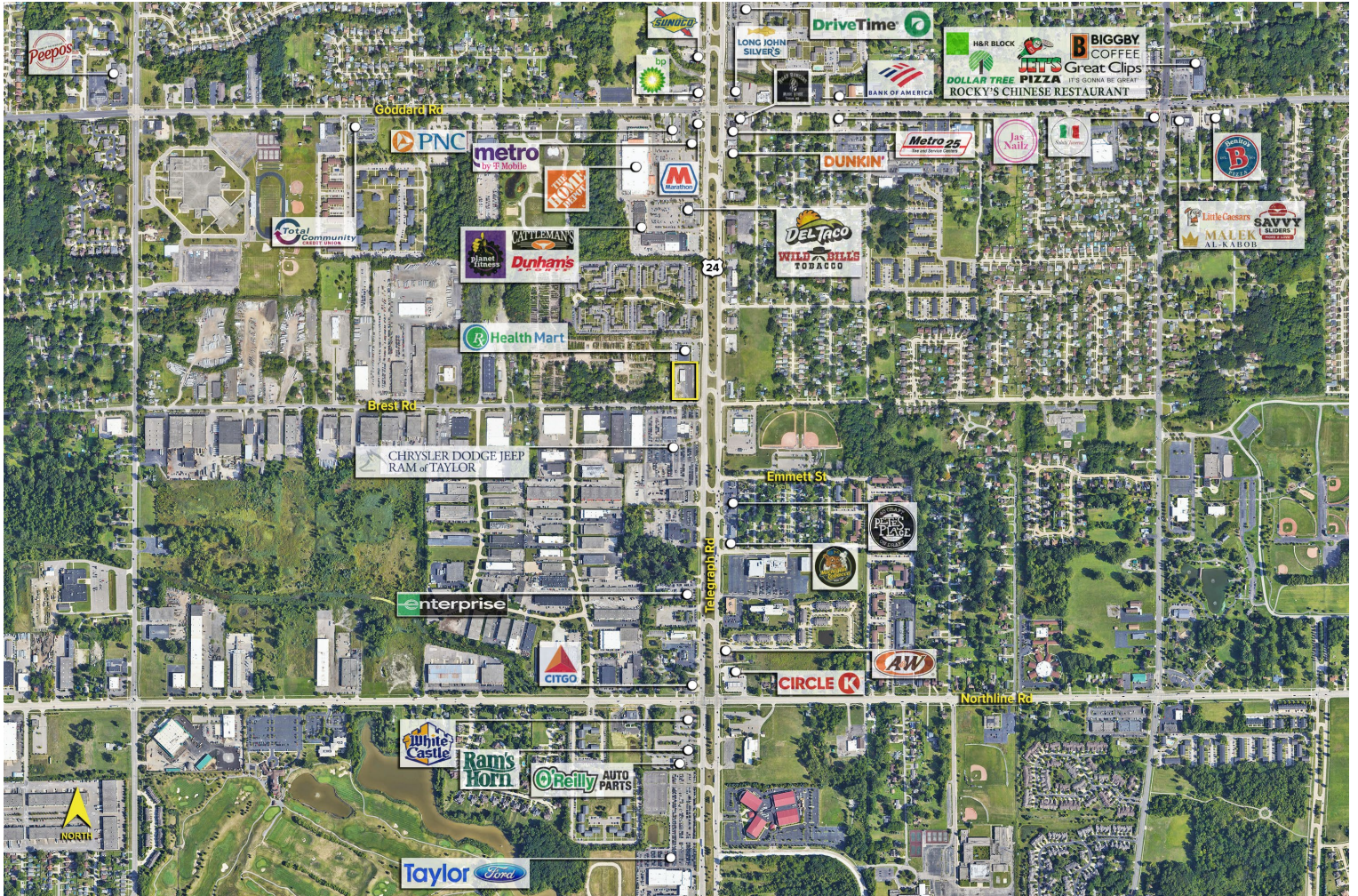
www.signatureassociates.com

24050 Brest Road – Taylor, Michigan

Land For Sale

2.18
Acres
AVAILABLE

Labeled Aerial



For more information, please contact:

SCOTT ELLIOTT

(248) 948 4182

selliott@signatureassociates.com

JUSTIN GAFFREY

(248) 799 3143

jgaffrey@signatureassociates.com

SIGNATURE ASSOCIATES

One Towne Square, Suite 1200

Southfield, MI 48076

www.signatureassociates.com