

OFFICE SPACE FOR LEASE

4921 Professional Court
Raleigh, NC 27609
SUITE 201



Space Available: +/- 1,160sf

Rental Rate: \$21.00/sf = \$2,030 / Month Full Service + Tenant pays Phone/Internet and In-Suite Janitorial.

Lease Term: 3 years with 3% annual increases

Space Highlights:

This well-maintained second-floor office suite offers a functional and professional layout, featuring six private offices—one of which can easily serve as a conference room—as well as a convenient storage closet. Tenants enjoy access to a spacious shared kitchen and restrooms. Hardwood flooring and large windows fill the space with abundant natural light while providing peaceful, wooded views. Freshly painted in a neutral palette, the suite presents a clean, modern work environment ready for immediate occupancy.

Property Details:

Professionally maintained office building conveniently located in a quiet cul-de-sac off Millbrook Rd near the intersection of Falls of Neuse Rd in the desirable North Raleigh area. Featuring mature landscaping, and abundant on-site parking, the property offers a welcoming and professional setting for businesses of all sizes.



**NEARI COLEMAN
ASSOCIATES**

www.NeariColeman.com

WIN COLEMAN, CCIM

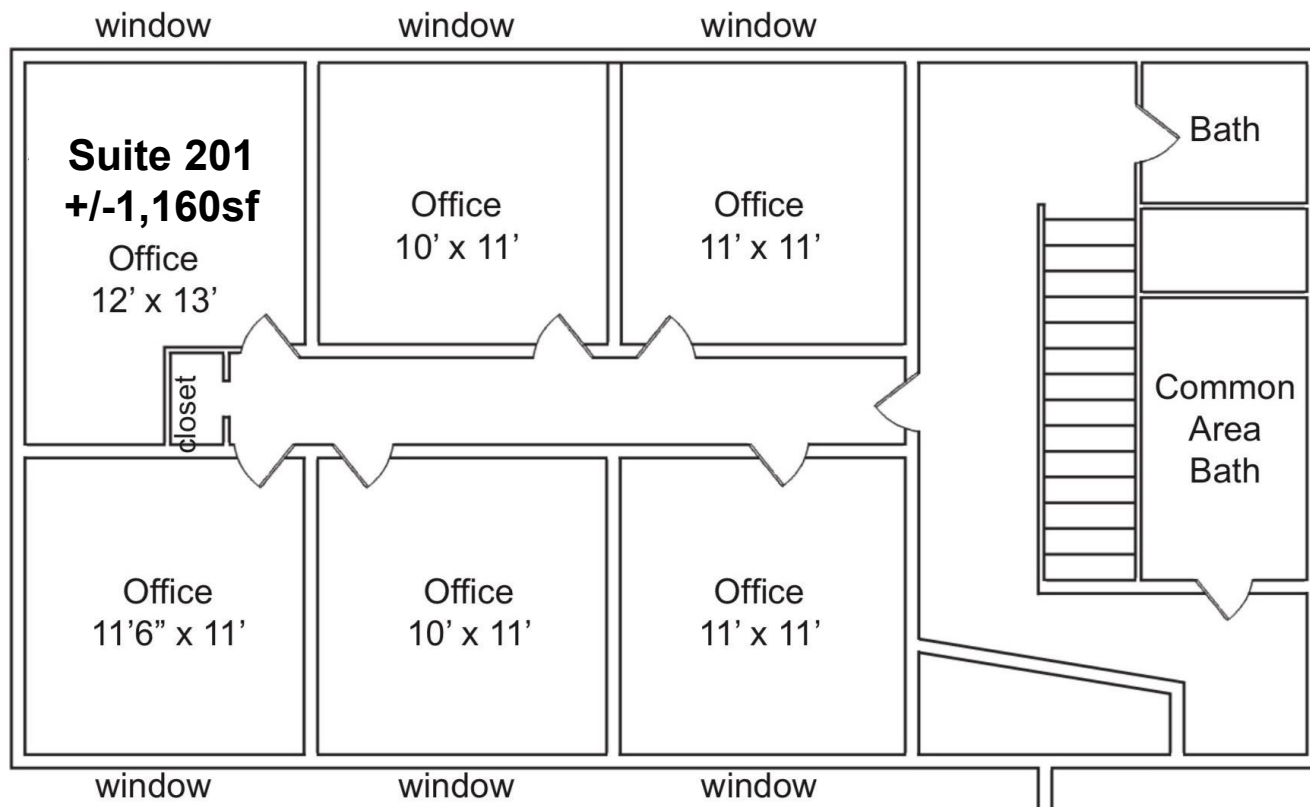
CHRISTINE BANNERMAN

115 S Saint Mary's St
Raleigh, NC 27603
Office - 919-828-4808

OFFICE SPACE FOR LEASE

4921 Professional Court
Raleigh, NC 27609
SUITE 201

FLOOR PLAN



The information contained herein has been obtained from sources deemed reliable; however, Coleman & Associates NC, LLC dba Neari Coleman Associates makes no representations or warranties, express or implied, as to the accuracy or completeness of the information. All information is subject to errors, omissions, changes in price or conditions, prior sale or lease, or withdrawal without notice. Prospective purchasers and tenants should conduct their own independent due diligence.



**NEARI COLEMAN
ASSOCIATES**

www.NeariColeman.com

WIN COLEMAN, CCIM

CHRISTINE BANNERMAN

115 S Saint Mary's St
Raleigh, NC 27603
Office - 919-828-4808