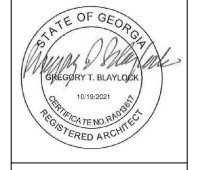


RULE JOY TRAMMELL RUBIO
 ARCHITECTURE INTERIOR DESIGN
 300 Galleria Parkway Suite 740 Atlanta, Georgia 30339
 770-661-1492 (phone) 770-661-1493 (fax)
 www.rjtrdesign.com

THIS DESIGN AND DRAWING ARE THE PROPERTY OF RULE JOY TRAMMELL + RUBIO, LLC AND MAY NOT BE COPIED OR REPRODUCED WITHOUT WRITTEN CONSENT © 2020

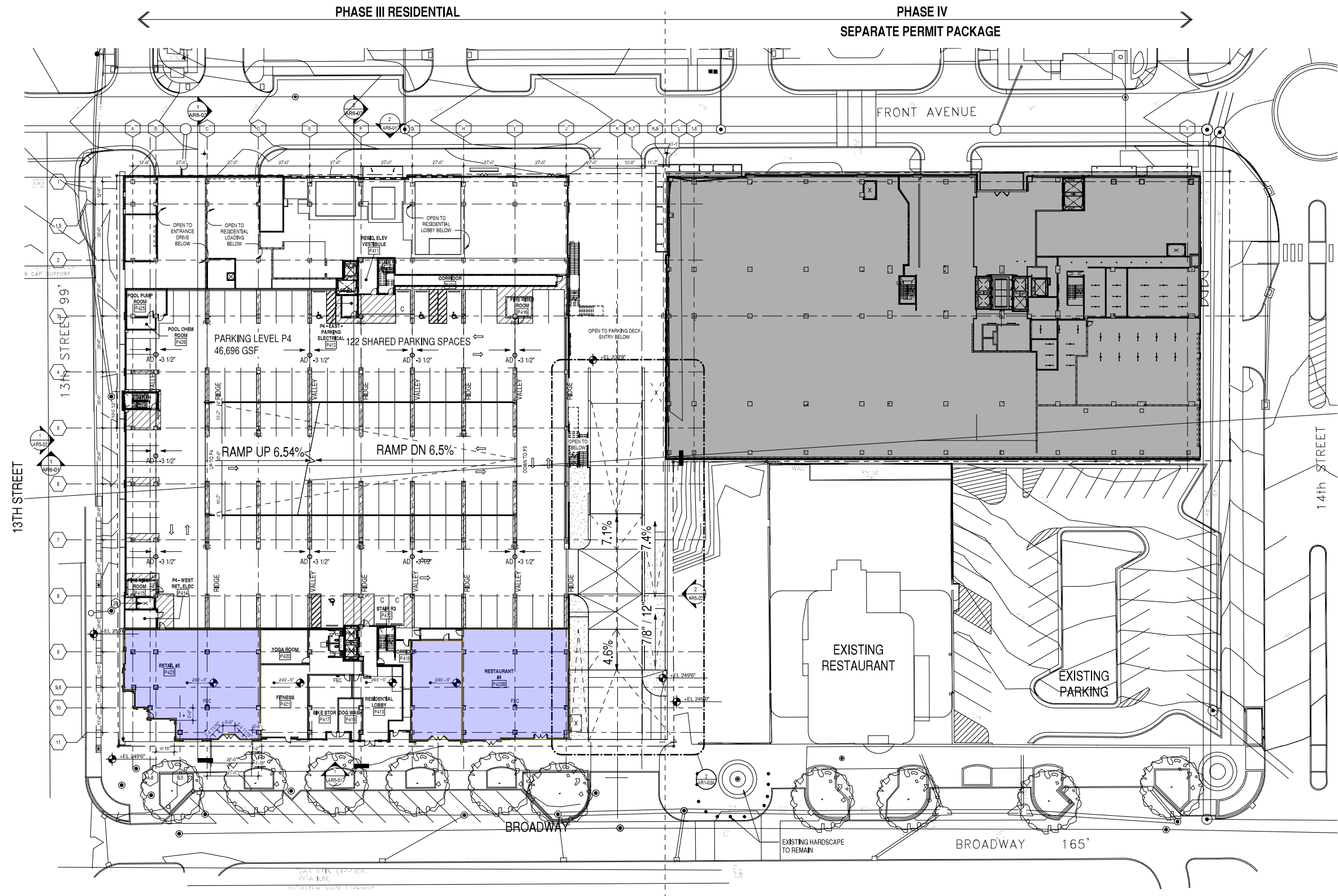
PRINTED

Rev	Date	Issue/Revision
01	01/01/21	FOUNDATION PERMIT
02	02/01/21	PERMIT SET



RIVERFRONT PLACE
 PHASE III- RESIDENTIAL BUILDING
 W.C. BRADLEY CO.
 COLUMBUS, GEORGIA

FLOOR PLAN - PARKING LEVEL P4 - BROADWAY LOBBY
 COMMISSION NO. 20-084
 DRAWING NO.
AP1-04



REFER TO AFI SERIES UNDER SEPARATE COVER
 REFER TO AOI SERIES UNDER SEPARATE COVER

1 FLOOR PLAN - LEVEL 04 - PARKING - P4
 3/64" = 1'-0"



ISSUED FOR CONSTRUCTION