

153

N.Coast Highway 101,
Suite 102

SolanaBeach, California



Available For Sublease or Direct Deal | ±710 SF
Ground Floor Office & Retail Space
[Click Link for Video Tour](#)



153 N.Coast Highway 101, Suite 102 Solana Beach, California

153 N. Coast Highway 101, Suite 102, Solana Beach, California

Size: ±710 SF

Base Rent: \$4.50/PSF NNN

NNN's: \$1.65/SF

Available: **NOW** Sublease Term through December 31, 2026

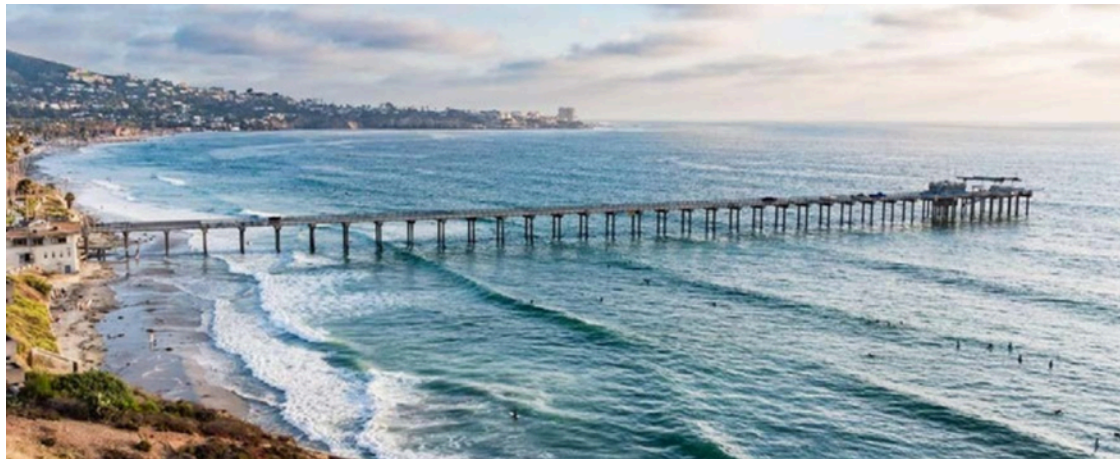
-
- Suite Layout:
- Office Build Out
 - Two Private Offices
 - Open Space
 - Former Uses:
 - Consulting and Real Estate Company
 - 2 Unreserved Parking Spaces
 - Monument and Building Signage

-
- Property Features
- High Profile Building With Great Visibility - 2009 Construction
 - High Quality Improvements Throughout
 - Building and Monument
 - Signage Available
 - Private Parking Lot With Reserved Spots
 - Outdoor Patio Area
 - Restroom



LOCATION FEATURES

- Superior Visibility on Highway 101
- Amtrak Station Directly Across Street
- Walk to Solana Beach Shops, Restaurants, Bars
- Close to Cedros Design District
- Short Blocks To the Beach and Fletcher Cove



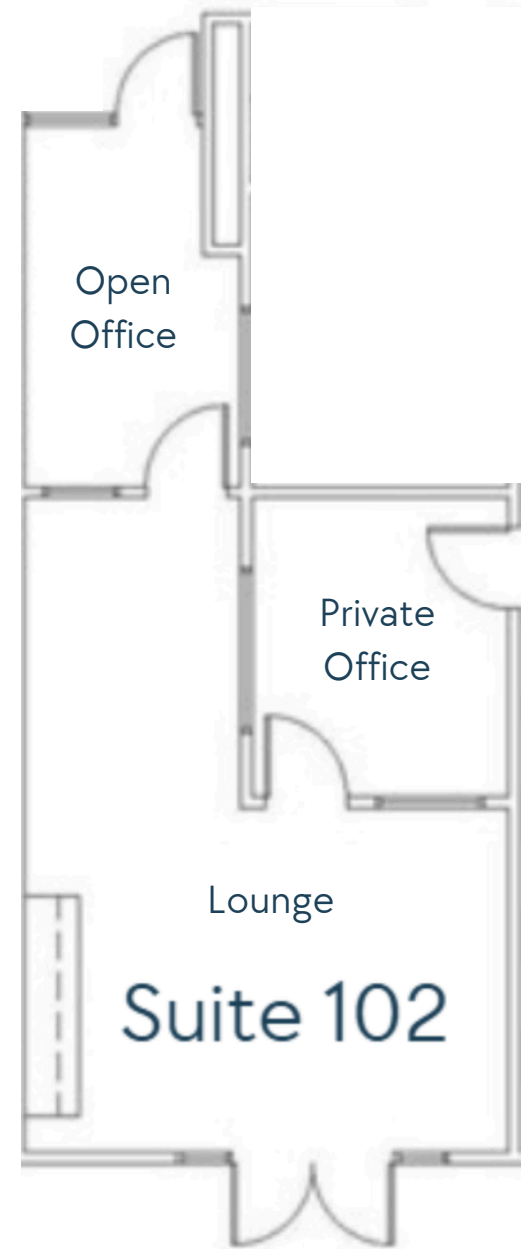
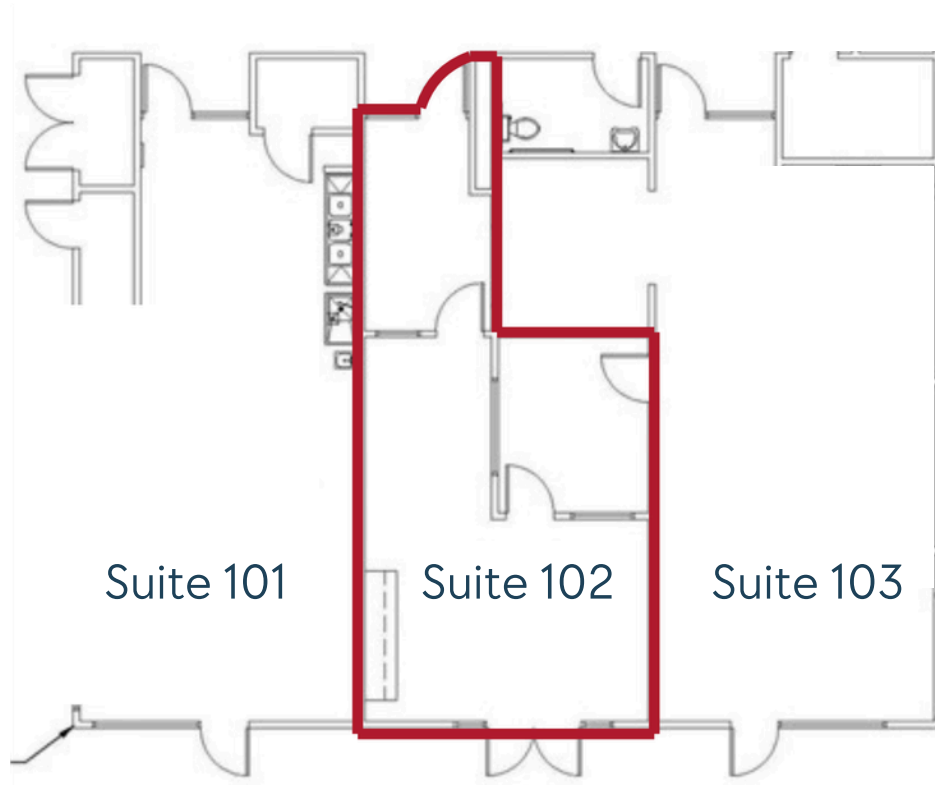
ENTRANCE



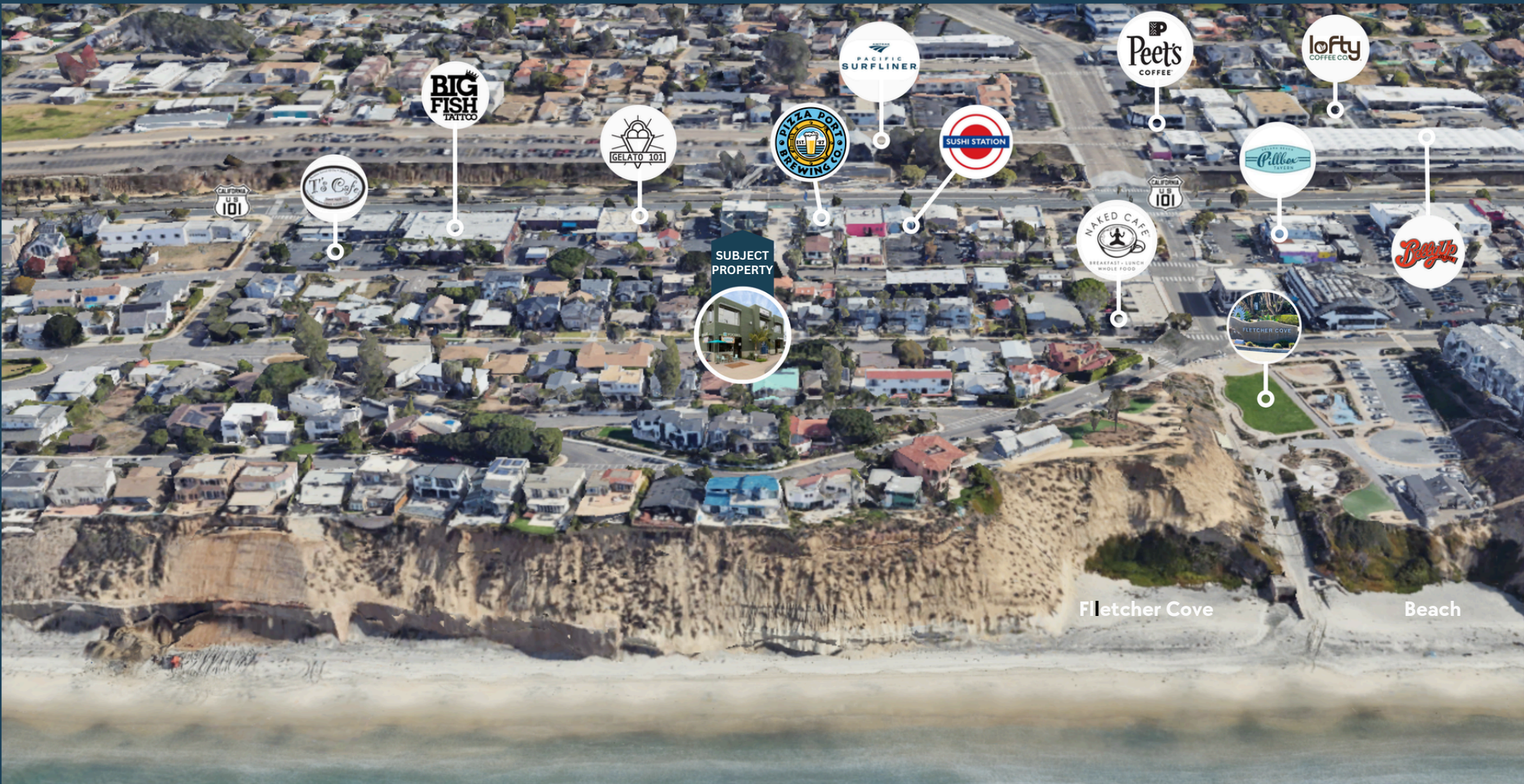
Floor Plan

CURRENT CONFIGURATION **SUITE 102**

- +/- 710 rsf
- \$4.50/psf/month + NNN (\$1.65/sf month)
- Creative Office Space/Retail
- One Private Office
- Open Creative Workspace
- Reclaimed Teak Floors
- Copy/Supply Area
- Built In Cabinets
- HVAC
- 2 Reserved Parking Spots
- Signage Fronting N Hwy 101
- [Video Walkthrough Link](#)



Coast Hwy 101



153 N.Coast Highway 101,
Suite 102
Solana Beach, California



EXCLUSIVE CONTACT

Jason Smithson
Senior Vice President
jsmithson@naisandiego.com
619.241.2394
LIC # 01477835

NO WARRANTY OR REPRESENTATION, EXPRESS OR IMPLIED, IS MADE AS TO THE ACCURACY OF THE INFORMATION CONTAINED HEREIN, AND THE SAME IS SUBMITTED SUBJECT TO ERRORS, OMISSIONS, CHANGE OF PRICE, RENTAL OR OTHER CONDITIONS, PRIOR SALE, LEASE, WITHDRAWAL WITHOUT NOTICE, AND OF ANY SPECIAL LISTING CONDITIONS IMPOSED BY OUR PRINCIPALS NO WARRANTIES OR REPRESENTATIONS ARE MADE AS TO THE CONDITION OF THE PROPERTY OR ANY HAZARDS CONTAINED THEREIN ARE ANY TO BE IMPLIED