

SHOAL CREEK COMMONS

11 +/- ACRES for Sale

East Highway 34, Sharpsburg, Georgia



Jeff Mansour 404-392-6092
jmansour@bmpatl.com



BULLOCK MANNELLY PARTNERS, INC.
beyond real estate

Patrick Laughlin 404-606-1919
pat.laughlin@bmpatl.com

E Highway 34

35,000 VPD

CONNECTOR



133 6124 023

133 6124 024

Aerial Tax Map with Parcel Numbers





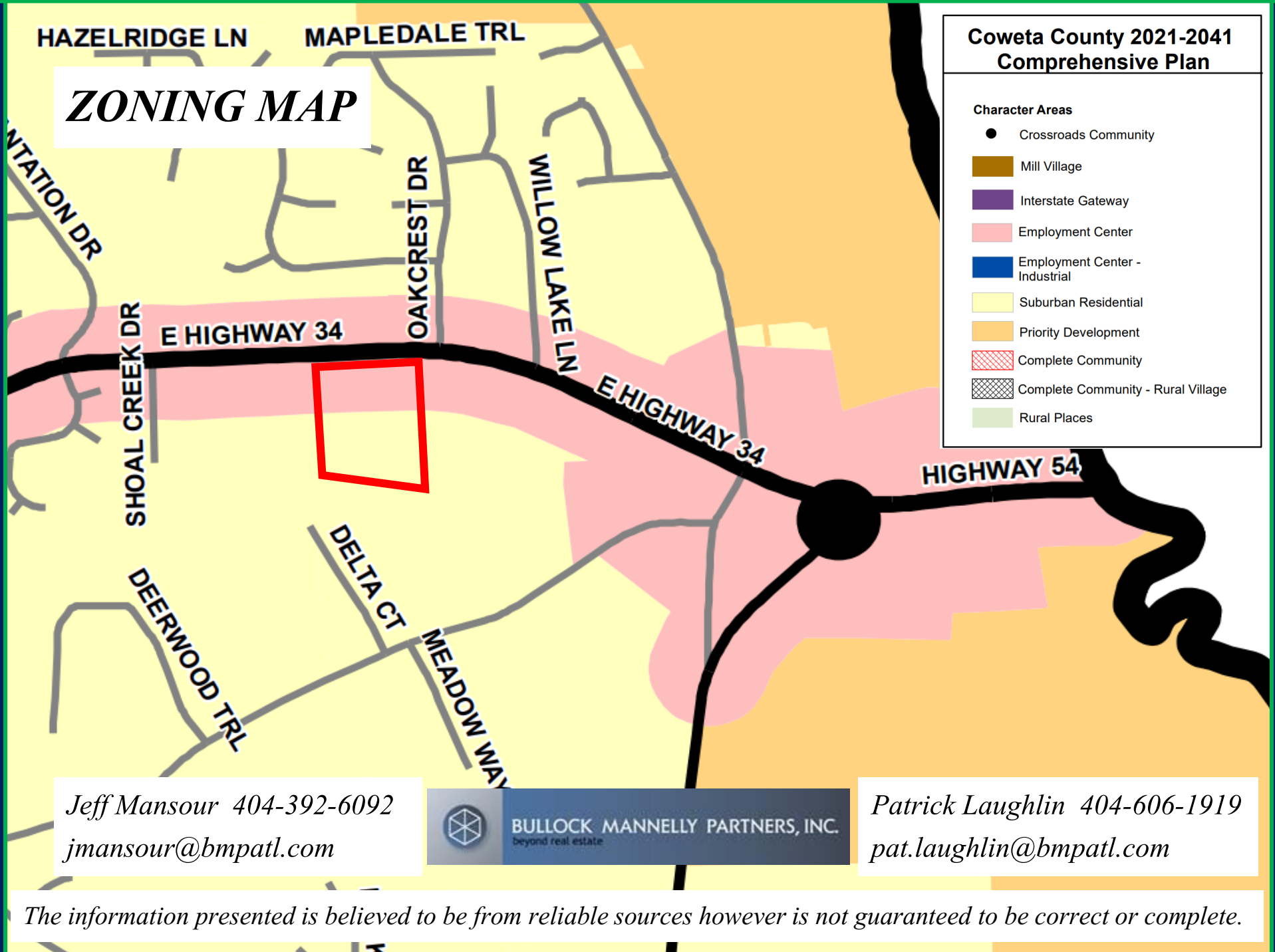
Flood Zone and Utilities Map

**Coweta County 2021-2041
Comprehensive Plan**

Character Areas

- Crossroads Community
- Mill Village
- Interstate Gateway
- Employment Center
- Employment Center - Industrial
- Suburban Residential
- Priority Development
- Complete Community
- Complete Community - Rural Village
- Rural Places

ZONING MAP



Jeff Mansour 404-392-6092
jmansour@bmpatl.com



BULLOCK MANNELLY PARTNERS, INC.
beyond real estate

Patrick Laughlin 404-606-1919
pat.laughlin@bmpatl.com

The information presented is believed to be from reliable sources however is not guaranteed to be correct or complete.